

DESIGN and ENGINEERING
 INC ARCHITECTS
 STRUCTURAL AND CIVIL ENGINEERS
 1645 Westgate Circle
 Brentwood, Tennessee 37027
 615-370-1779 fax: 370-9108
 www.dandainc.us

STATE OF KENTUCKY
 ALAN D. HOLT
 778
 REGISTERED
 LANDSCAPE ARCHITECT

LANDSCAPE LEGEND

- 6" SCHEDULE 40 IRRIGATION SLEEVE
- GROUNDCOVER**
 - APPROXIMATELY 1,200 SQUARE FEET 2-3" DIAMETER RIVER ROCK
 - 14,000± S.F. INCLUDING 10% FOR WASTE PREMIUM TURFGRASS BLEND SOD
 - 55 'BIG BLUE' LIRIOPE LIRIOPE MUSCARI 'BIG BLUE' #1 CONTAINER 2' O.C.
- ORNAMENTAL GRASS**
 - 13 MAIDEN GRASS MISCANTHUS SINENSIS 'GRACILLIMUS' #1 CONTAINER 42" O.C. DO NOT CROWD CUT TO GROUND IN SPRING BEFORE NEW GROWTH EMERGES
- SHRUBS**
 - 14 ADAM'S NEEDLE YUCCA FILAMENTOSA #3 CONTAINER 30" O.C. REMOVE SPENT FLOWER STALKS
 - 77 LEATHERLEAF VIBURNUM VIBURNUM RHYTIDOPHYLLUM 4' HEIGHT 4' O.C. MAINTAIN HEDGE AT 6' HEIGHT MINIMUM
- TREES**
 - 7 EASTERN REDBUD CERCIS CANADENSIS 2" DBH
 - 8 TULIP POPLAR LIRIODENDRON TULIPIFERA 2" DBH, 8-10' HEIGHT STRAIGHT TRUNK WATCH FOR APHIDS

LANDSCAPING REQUIREMENTS

FRONTAGE REQUIREMENTS
(1 TREE/30' FRONTAGE)

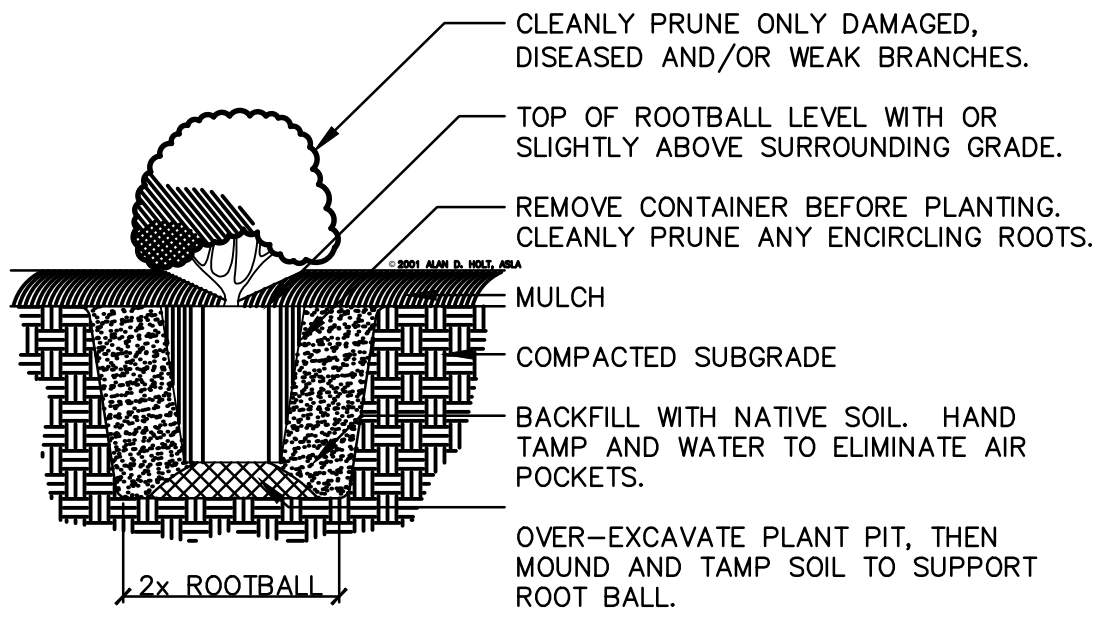
PROPERTY LINE	LENGTH	TREES REQUIRED	TREES PROVIDED
NORTH (W. FORREST AVE.)	211'	7	7*
SOUTH			
EAST (US-31)	250'	8	8
WEST			

*UNDERSTORY TREES USED DUE TO OVERHEAD POWER
 BUFFER REQUIREMENTS - 4' HEIGHT EVERGREEN HEDGE TO BUFFER RESIDENTIAL USE

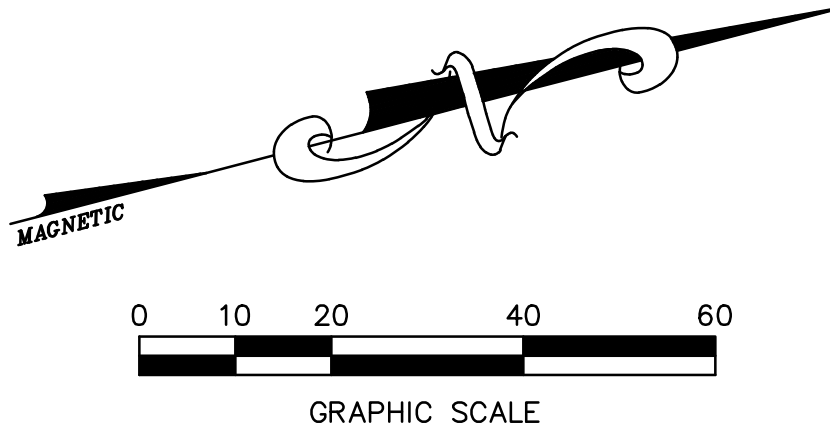
LANDSCAPE NOTES:

1. LOCATE ALL UTILITIES BEFORE DIGGING. PROTECT ALL UTILITIES FROM DAMAGE DURING CONSTRUCTION.
2. ELIMINATE EXISTING VEGETATION IN AREAS TO BE PLANTED. SPRAY WITH ROUNDUP AT MANUFACTURER'S RECOMMENDED RATE TWICE IN 14 DAYS.
3. TOP DRESS ALL AREAS TO RECEIVE PLANTINGS WITH 2" FINISHED MUSHROOM COMPOST PRIOR TO PLANTING.
4. ALL PLANT MATERIAL TO MEET ANSI Z-71 OR BETTER.
5. DECREASE PLANT SPACING AS REQUIRED TO ALLOW PLACEMENT OF THE DESIGNATED NUMBER OF PLANTS PER GROUPING.
6. FERTILIZE ALL PLANTINGS WITH OSMOCOTE OR OTHER APPROVED SLOW RELEASE FERTILIZER AT MANUFACTURER'S RECOMMENDED RATE BEFORE MULCHING.
7. APPLY PREEN OR OTHER APPROVED PRE-EMERGENT HERBICIDE TO ALL PLANTING AREAS BEFORE MULCHING.
8. MULCH ALL AREAS OF TREE, SHRUB AND GROUNDCOVER MASS PLANTINGS WITH 3" SHREDDED HARDWOOD BARK MULCH.
9. QUANTITIES SHOWN IN PLANT LIST ARE FOR CONTRACTOR'S CONVENIENCE. VERIFY ALL PLANT QUANTITIES SHOWN ON PLAN AND IN PLANT LIST.
10. B&B MATERIAL MAY BE SUBSTITUTED FOR CONTAINER GROWN MATERIAL PROVIDED IT EXCEEDS THE MINIMUM SIZES NOTED.
11. SOD ALL DISTURBED AREAS WITH SPECIES SHOWN ON PLAN.
12. WARRANTY ALL PLANTS FOR A PERIOD OF ONE (1) YEAR FROM FINAL ACCEPTANCE.

- IRRIGATION NOTES:**
1. AUTOMATIC IRRIGATION SYSTEM TO PROVIDE 100% COVERAGE OF ALL LANDSCAPE AREAS.
 2. CONTRACTOR RESPONSIBLE FOR LOCATING AND SUPPLYING ELECTRICAL POWER TO CONTROLLER.
 3. CONTRACTOR TO PROVIDE AND PAY FEES FOR SEPARATE IRRIGATION METER.
 4. PROVIDE BACKFLOW PREVENTION PER CITY REQUIREMENTS.
 5. PROVIDE RAIN SHUT OFF DEVICE PER STATE LAW.



1 CONTAINERIZED SHRUB PLANTING DETAIL
 L-1 SCALE: NOT TO SCALE



A NEW LOCATION FOR
CAPTAIN D'S
 726 NORTH THIRD STREET
 BARDSTOWN, KENTUCKY 40004

TRITON INVESTMENTS
 1020 BLOOMFIELD DRIVE
 BARDSTOWN, KENTUCKY 40004



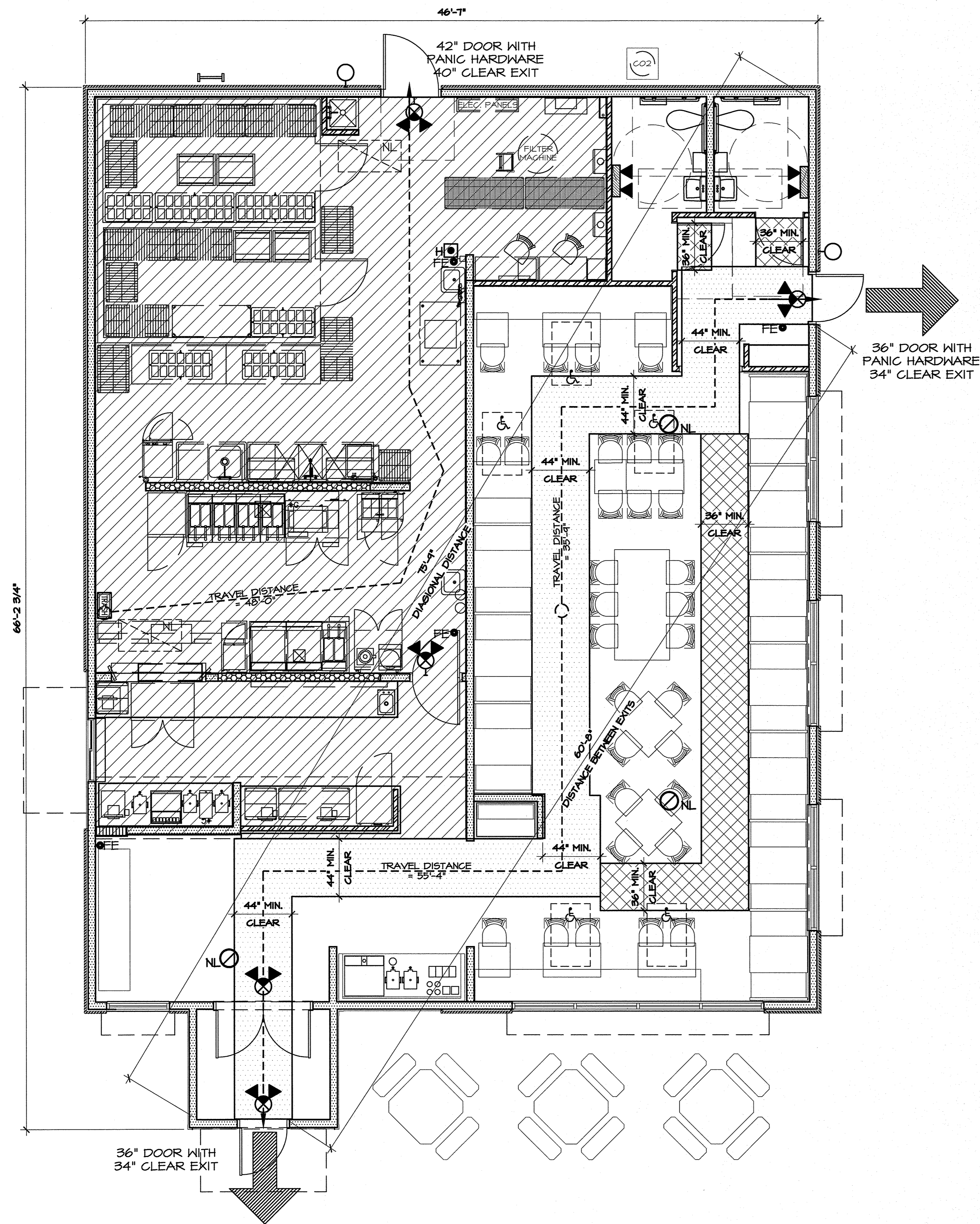
Job Number:
 68F-0019

Revisions:
 A 02-16-17 - CITY-COUNTY COMMENTS

JANUARY 13, 2017

L-1
 Landscape Plan
 CD-82E-16-SD-30

Revised Bid Set



ACCESSIBLE SEATING REQUIREMENTS

TOTAL NUMBER OF SEATS	% TO BE HANDICAP ACCESSIBLE	MIN. HANDICAP SEATS REQ.
82	5%	5 SPACES

MEANS OF EGRESS

SEAT COUNT IS: 82
 OCCUPANT LOAD FOR PUBLIC AREAS IS: 88
 EXIT UNITS:
 - (2) EXITS PROVIDED (2) REQUIRED

- EXIT AISLES ARE 44" MIN. WIDTH
 - EXIT ACCESSWAYS ARE 36" MIN. WIDTH

- ALL EXIT DOORS MEET OR EXCEED 32" CLEAR WIDTH WHEN IN THE OPEN POSITION AND SWING IN THE DIRECTION OF TRAVEL.
 - EXIT LOCATIONS MEET OR EXCEED THE REQUIRED NUMBER AND SEPARATION REQUIREMENTS.

EGRESS WIDTH:
 PROPOSED SEAT COUNT = 82 SEATS + 6 WAITING = 88
 .15 x 88 = 13.2' REQUIRED

TOTAL EGRESS WIDTH (2 DOORS @ 34") = 68"
 68" > 13.2'

- 50% OF EGRESS MUST EXIT THROUGH MAIN ENTRY
 1 DOOR @ 34" = 34" & 50% OF 13.2' = 6.6'
 6.6' < 34"

NOTES:
 1. G.C. TO VERIFY QUANTITY & LOCATIONS OF FIRE EXTINGUISHERS WITH LOCAL AUTHORITIES. G.C. TO SUPPLY ANY ADDITIONAL FIRE EXTINGUISHERS IF REQUIRED.
 2. SEE DIMENSION PLAN FOR WALL TYPES AND LOCATIONS.
 3. A SIGN STATING THE OCCUPANT LOAD OF THE BUILDING SHALL BE POSTED IN A CONSPICUOUS PLACE NEAR THE MAIN ENTRY. G.C. TO PROVIDE AND INSTALL OCCUPANT LOAD SIGN. G.C. TO VERIFY WITH LOCAL AUTHORITIES FOR LOCATION OF SIGN.
 4. G.C. TO VERIFY WITH LOCAL AUTHORITY HAVING JURISDICTION IF KEY BOX IS REQUIRED. IF SO, G.C. TO COORDINATE WITH AUTHORITY HAVING JURISDICTION FOR PREFERRED LOCATION.

ACCESSIBILITY LEGEND

	TRAVEL DISTANCE
	PATH OF EGRESS
	ACCESSIBLE SEATING

GENERAL NOTES

1. SEE ELECTRICAL SHEETS FOR EXACT LIGHT TYPE/MODEL.

LEGEND

EXIT UNITS:
 3 @ 34" = 68/2 = 510 NEW EXIT CAPACITY
 OCCUPANTS = 151

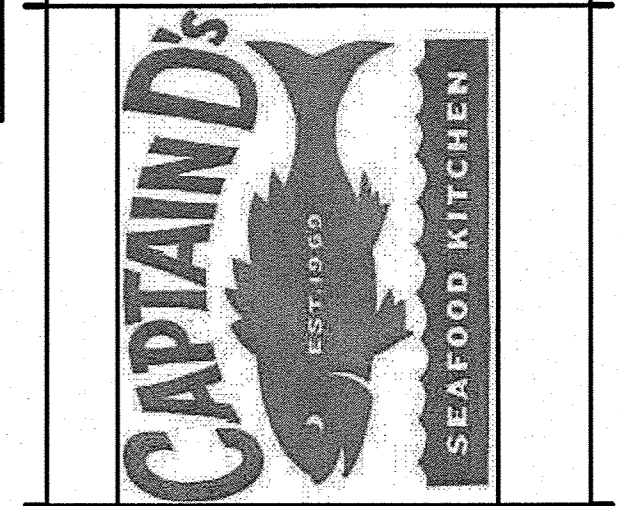
	REMOTE EXTERIOR
	WALL MOUNTED FIRE EXTINGUISHER
	RECESSED CAN/PENDANT NIGHT LIGHT
	EXIT LIGHT
	WALL MOUNTED EMERGENCY LIGHT
	EXIT LIGHT WITH EMERGENCY LIGHTING
	MANUAL PULL STATION FOR HOOD FIRE SUPPRESSION
	FIRE ALARM FLASHING LIGHT
	FIRE ALARM FLASHING LIGHT/CHIME
	CEILING MOUNTED SMOKE DETECTOR
	2x4 FLOURESCENT/NIGHT LIGHT
	EXIT LIGHT WITH EMERGENCY LIGHTING
	REQUIRED 36" CLEAR EXIT AISLE ACCESSWAYS
	REQUIRED 44" CLEAR EXIT AISLE
	NON-PUBLIC AREAS

DESIGN
and
ENGINEERING
INC ARCHITECTS
STRUCTURAL AND CIVIL ENGINEERS
1645 Westgate Circle
Brentwood, Tennessee 37027
615-370-1779 fax: 370-9108
www.dondeinc.us

Matthew D. Dond
1/13/17

A NEW LOCATION FOR
CAPTAIN D'S
NORTH 3RD STREET
BARDSTOWN, KY

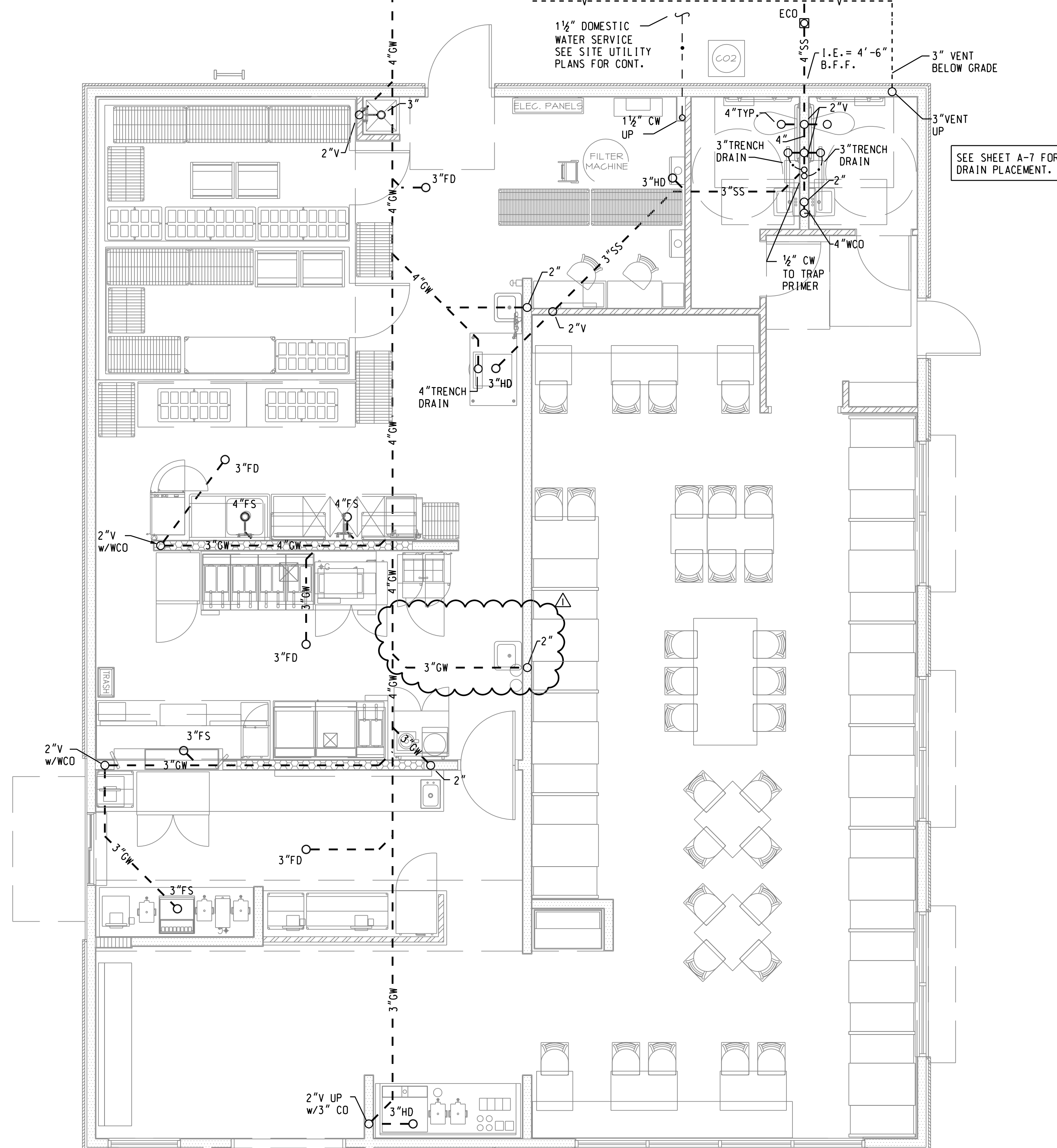
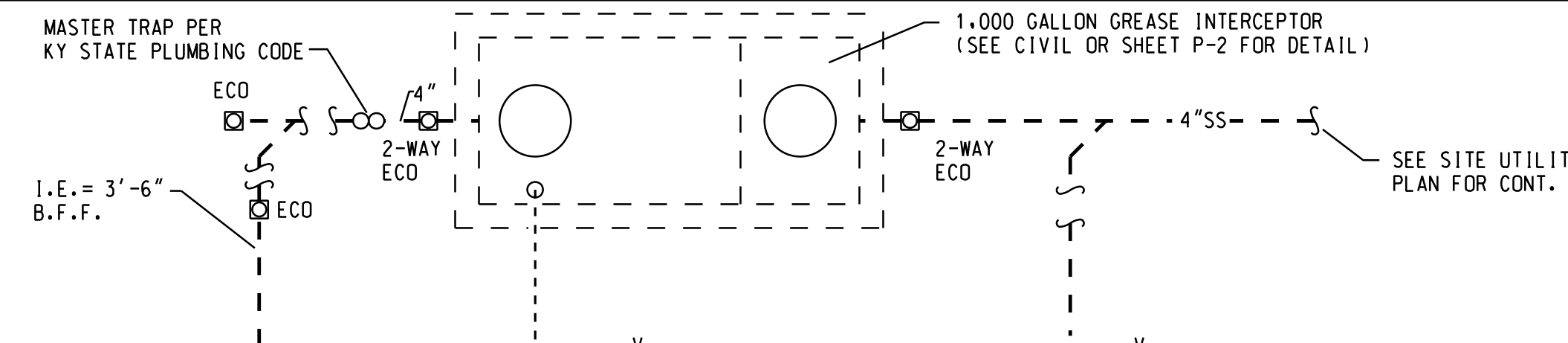
TRITON INVESTMENTS
1020 BLOOMFIELD RD.
BARDSTOWN, KY 40004



Job Number:
68F0019
Revisions:

JANUARY 13, 2017
LS-1
LIFE SAFETY PLAN &
ACCESSIBILITY PLAN
CD-82E-T6-SD-30

C:\16285\P-1.DGN
2/17/2017
1:28:40 PM

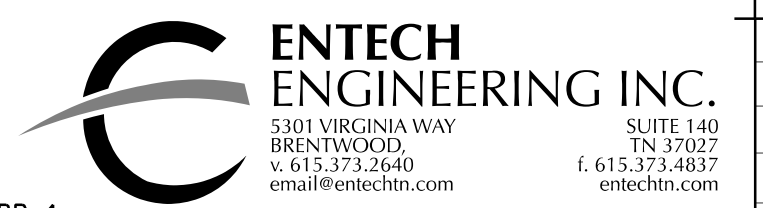


- GENERAL KITCHEN PLUMBING NOTES:**
1. CONTRACTOR SHALL COORDINATE ALL WORK WITH KITCHEN EQUIPMENT SUPPLIER'S PLANS AND ALL OTHER TRADES INVOLVED PRIOR TO THE INSTALLATION OF PLUMBING PIPING AND EQUIPMENT CONNECTIONS.
 2. CONTRACTOR SHALL PROVIDE ALL SUPPLY AND DRAIN CONNECTIONS TO KITCHEN EQUIPMENT AS REQUIRED BY KITCHEN EQUIPMENT SUPPLIER. EQUIPMENT ROUGH-IN PLANS, STATE AND LOCAL CODES.
 3. PROVIDE DISCONNECT MEANS ON ALL SUPPLY AND DRAIN CONNECTIONS TO KITCHEN EQUIPMENT. (I.E: UNIONS, SLIP-NUTS, ETC.)
 4. PROVIDE 2" FIXED AIR GAP ON ALL INDIRECT WASTE LINES FROM KITCHEN EQUIPMENT WHICH DISCHARGES TO A FLOOR DRAIN, FLOOR SINK OR HUB DRAIN.
 5. PROVIDE DEEP SEAL P-TRAP ON ALL FLOOR DRAINS, FLOOR SINKS, TRENCH DRAINS AND HUB DRAINS.

PLUMBING UNDERGROUND FLOOR PLAN

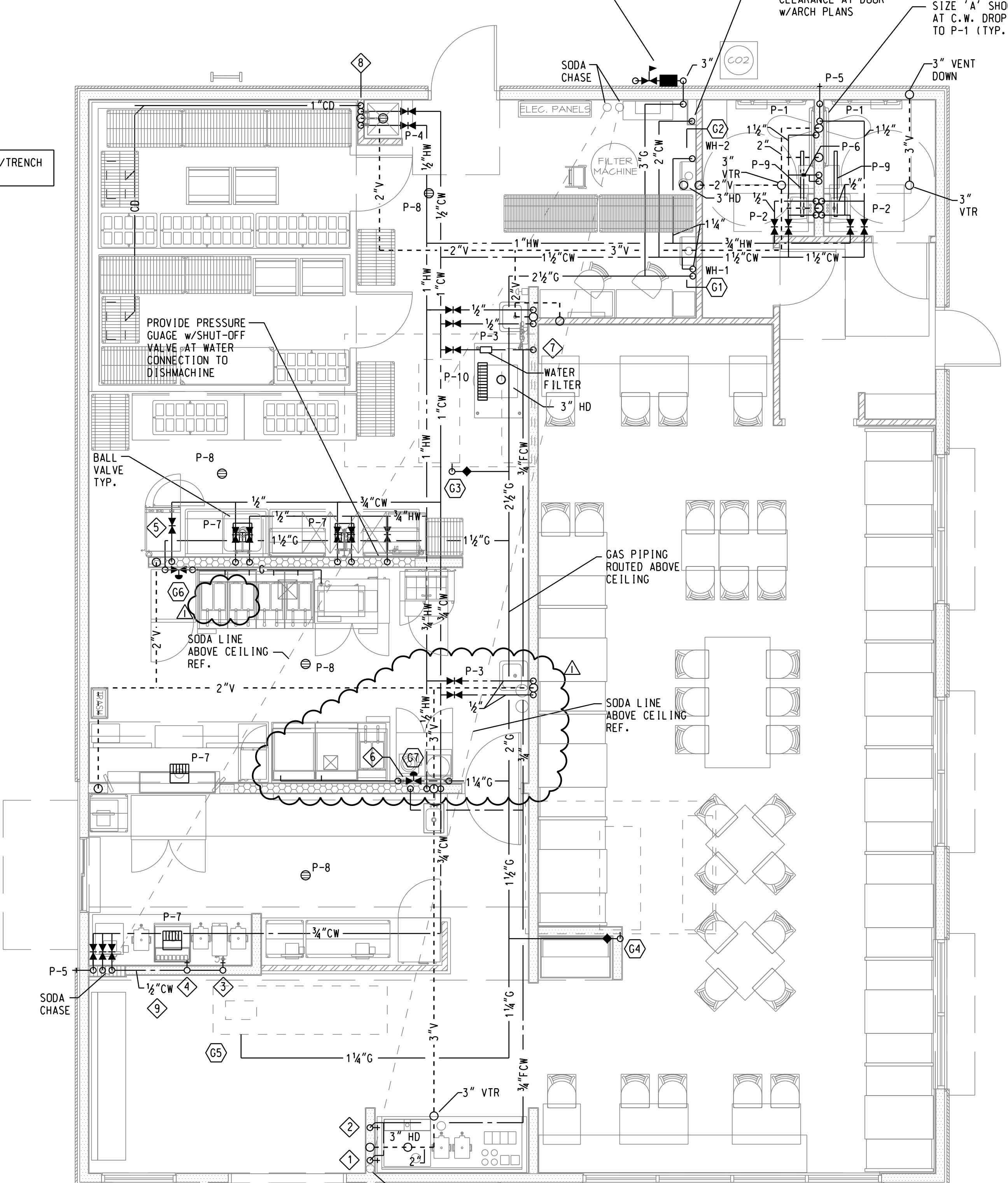
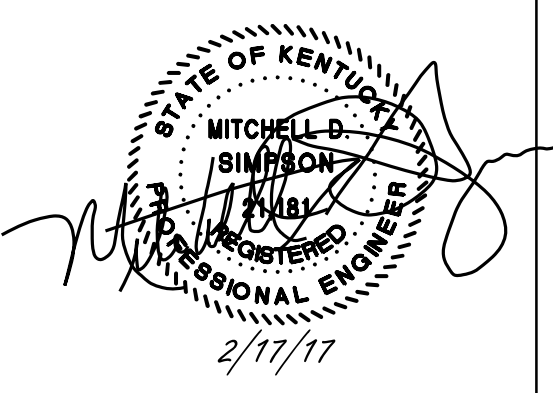
SCALE 1/4" = 1'-0"

GAS METER/P.R.V. STATION
COORDINATE METER SETTING,
LOCATION AND INSTALLATION
W/LOCAL GAS UTILITY CO.
SEE GAS CONNECTION SCHEDULE
FOR LOAD SUMMARY



DESIGN and ENGINEERING

DANIEL ARCHITECTS
STRUCTURAL AND CIVIL ENGINEERS
1645 Westgate Circle
Brentwood, Tennessee 37027
615-370-1779 fax: 370-9108
www.dandainc.us



- PLUMBING PLAN NOTES:**
- 1 1/2" FCW @ 12" A.F.F. w/STOP FOR ITEM #80 DRINK HEAD.
 - 3/4" FCW @ 12" A.F.F. w/STOP TO FILTER BEFORE CONNECTION TO ICE MAKER. ITEM #84.
 - 1/4" CW @ 48" A.F.F. w/STOP FOR ITEM #11 COFFEE/TEA BREWER.
 - 3/8" CW @ 12" A.F.F. w/STOP TO DRINK HEAD. EQUIPMENT ITEM #9.
 - 3/4" CW @ 12" A.F.F. TO STEAMER. ITEM #19.
 - 1/2" FCW w/STOP TO WATER DISPENSER FOR IGLOO COOLER (ITEM #44). CW SUPPLIED FROM DOWNSTREAM OF WATER FILTER AT ITEM #42.
 - 3/4" CW w/STOP TO FILTER BANK ITEM #42B BEFORE CONNECTION TO ICE MAKER ITEM #42.
 - ROUTE CONDENSATE DRAIN FROM FREEZER/COOLER EVAPORATOR COILS AND SPILL TO SITE STORM DRAINAGE
 - ROUTE 1/2" CW HORIZONTAL IN WALL FROM DROP TO SERVE TEA/COFFEE DISPENSER.

PLUMBING FLOOR PLAN

SCALE 1/4" = 1'-0"

A NEW LOCATION FOR
CAPTAIN D'S
NORTH 3RD STREET
BARDSTOWN, KY

TRITON INVESTMENTS
1020 BLOOMFIELD RD.
BARDSTOWN, KY 40004



Job Number:
68FO019

Revisions:
2/16/17 DRAWING UPDATE

JANUARY 13, 2017

P-1

PLUMBING FLOOR PLANS
CD-82G-16-SD-32

Revised Bid Set

C:\160869 P-2.dwg
1/11/2017
1:31:24 PM

GENERAL PLUMBING NOTES:

SCOPE
THE INTENT OF THE SPECIFICATION AND THE DRAWINGS IS TO PROVIDE A COMPLETE AND FULLY OPERATIONAL PLUMBING SYSTEM. THE PLUMBING CONTRACTOR SHALL FURNISH AND INSTALL ALL LABOR, MATERIAL AND EQUIPMENT NECESSARY TO COMPLETE THE PLUMBING WORK.

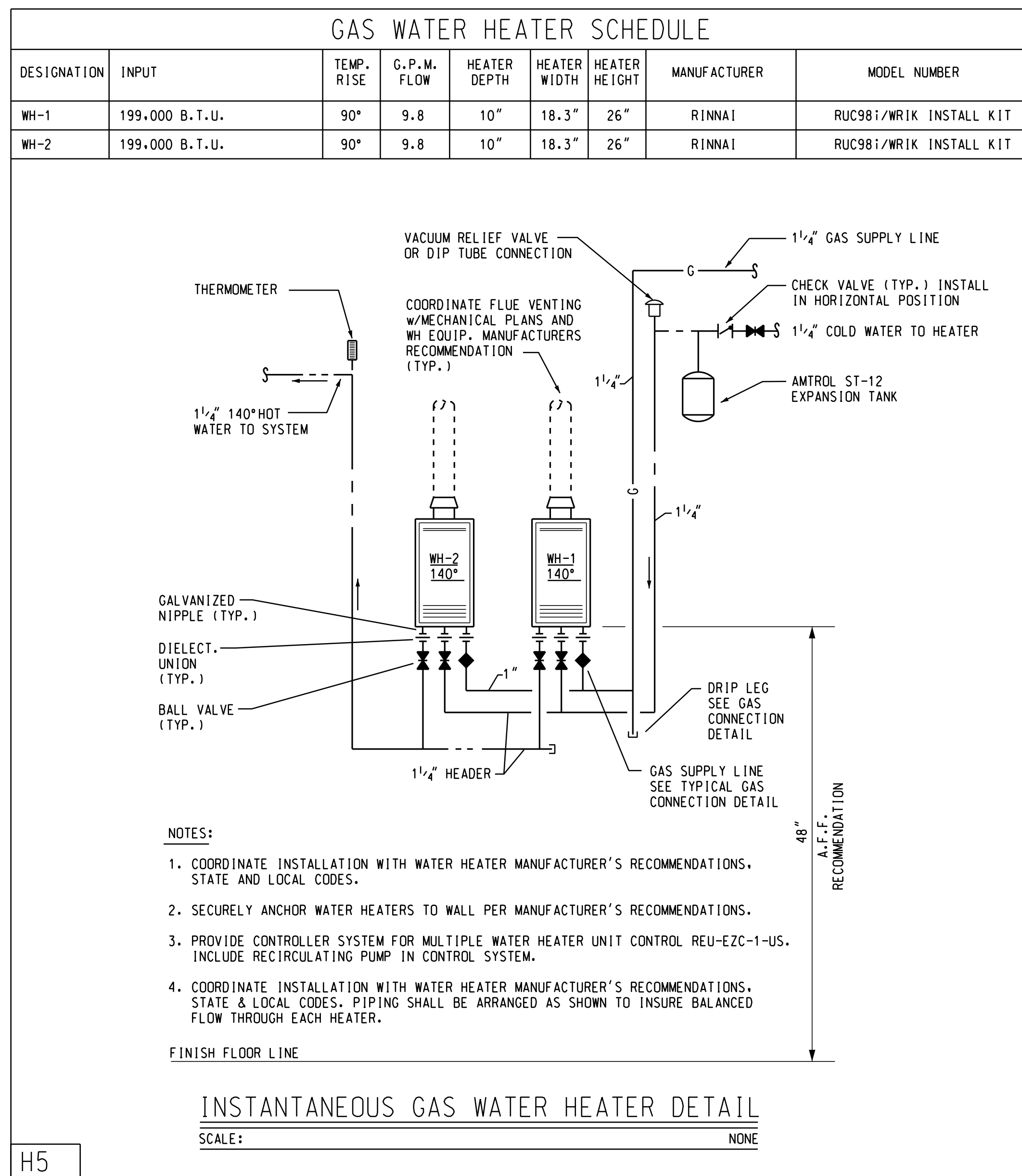
SITE EXAMINATION
THE PLUMBING CONTRACTOR SHALL THOROUGHLY EXAMINE ALL AREAS WHERE FIXTURES, EQUIPMENT, AND PIPING WILL BE INSTALLED AND WILL REPORT ANY CONDITION THAT, IN HIS OPINION, PREVENTS THE PROPER INSTALLATION OF THE PLUMBING WORK.

STANDARDS
EQUIPMENT AND MATERIALS SHALL CONFORM WITH APPROPRIATE PROVISIONS OF ASME, ASTM, UL, NEMA, ANSI, ASHRAE, NFPA, AS APPLICABLE TO EACH INDIVIDUAL UNIT OR ASSEMBLY.

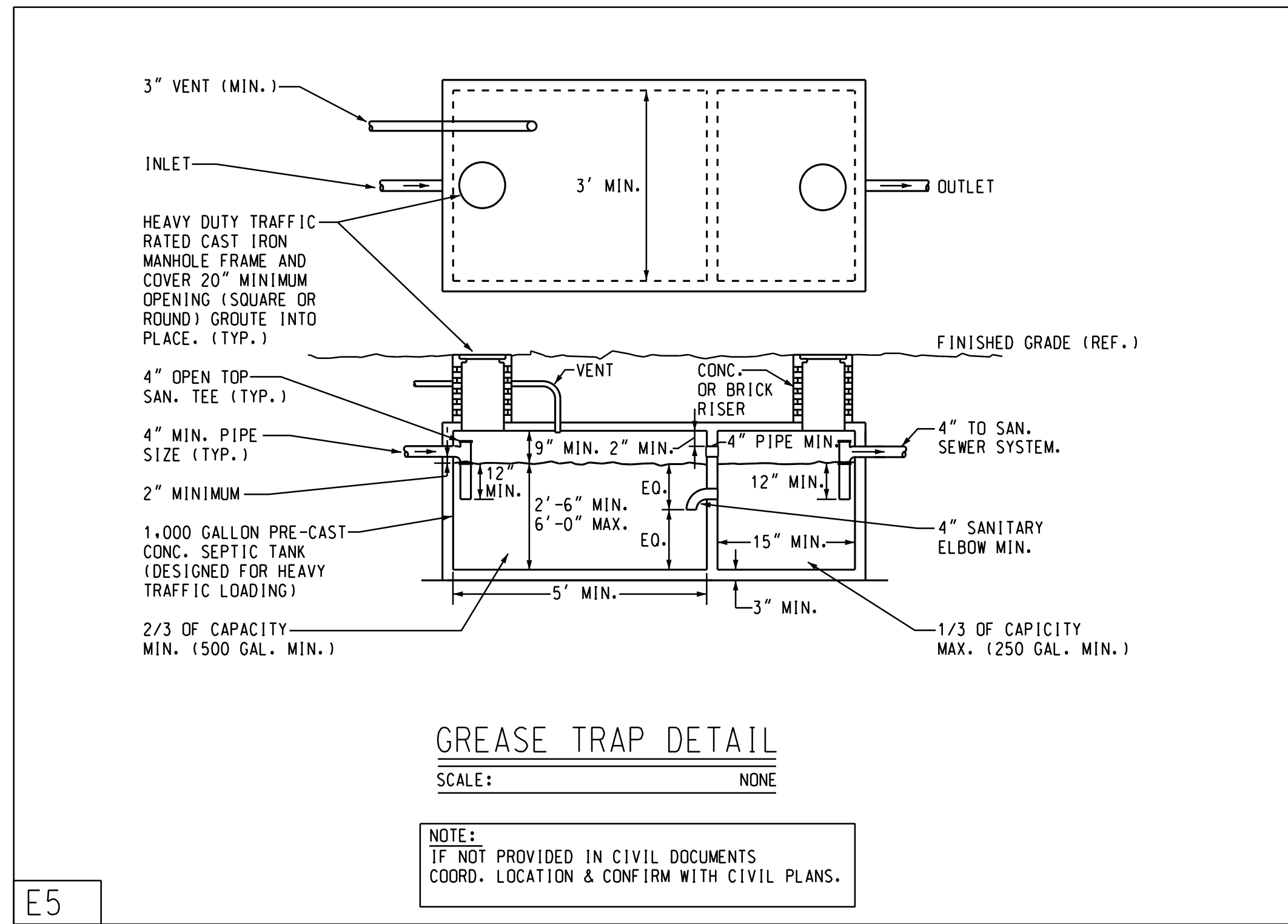
CODES
ALL WORK SHALL BE PERFORMED IN STRICT ACCORDANCE WITH ALL APPLICABLE STATE AND LOCAL CODES AND ORDINANCES. IN CASE OF CONFLICT BETWEEN THE DRAWINGS/SPECIFICATIONS AND THE CODES AND ORDINANCES, THE HIGHEST STANDARD SHALL APPLY. THE MECHANICAL CONTRACTOR SHALL SATISFY CODE REQUIREMENTS AS A MINIMUM STANDARD WITHOUT ANY EXTRA COST.

PERMITS AND FEES
THE PLUMBING CONTRACTOR SHALL PROCURE AND PAY FOR ALL PERMITS, FEES AND INSPECTIONS NECESSARY TO COMPLETE THE PLUMBING WORK.

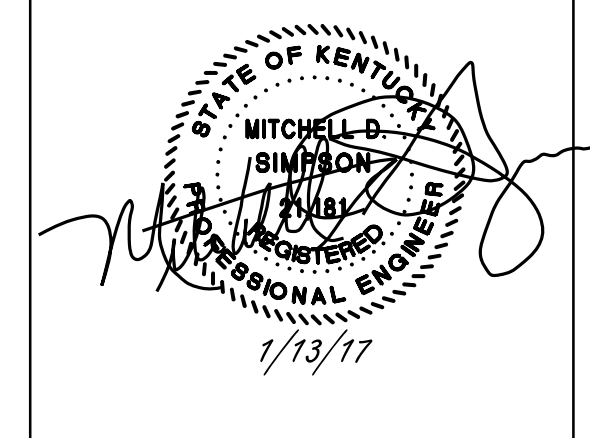
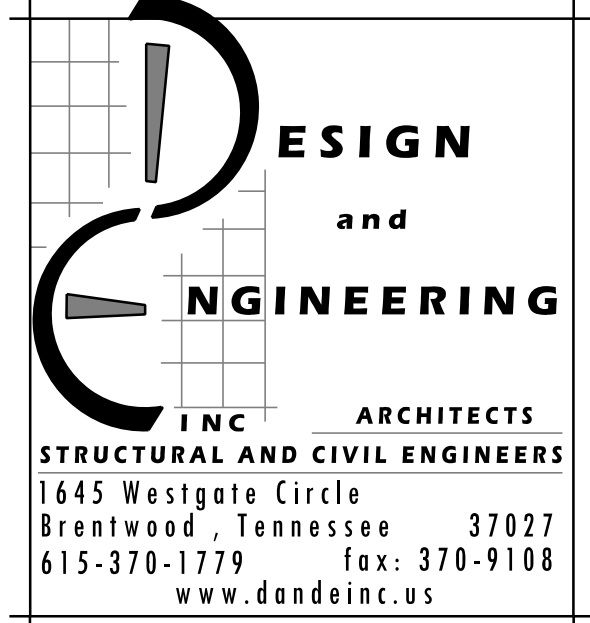
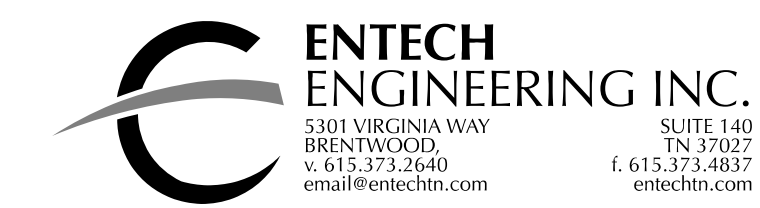
WARRANTY
THE PLUMBING CONTRACTOR SHALL UNCONDITIONALLY WARRANT ALL WORK TO BE FREE OF DEFECTS IN MATERIAL AND WORKMANSHIP FOR A PERIOD OF ONE (1) YEAR FROM THE DATE OF FINAL ACCEPTANCE AND WILL REPAIR OR REPLACE ANY DEFECTIVE WORK PROMPTLY AND WITHOUT CHARGE AND RESTORE ANY OTHER EXISTING WORK DAMAGED IN THE COURSE OF REPAIRING DEFECTIVE MATERIALS AND WORKMANSHIP.



H5



E5



PLUMBING LEGEND

SYMBOL	DESCRIPTION	ABBREVIATIONS
●	COLD WATER (UNDERGROUND)	
—	COLD WATER	C.W.
—	HOT WATER (TEMPERATURE, IF MORE THAN ONE)	H.W.
C.O.	CLEAN-OUT	C.O.
—SS—	SANITARY SEWER (UNDERGROUND)	
—SS—	SANITARY SEWER	S.S.
—V—	VENT	V
—V.T.R.—	VENT THROUGH THE ROOF	V.T.R.
—G—	NATURAL GAS	G
—CD—	CONDENSATE DRAIN	C.D.
—G/W—	GREASE WASTE	G.W.
↑	RISER IDENTIFICATION	
P-1	FIXTURE IDENTIFICATION (SEE SPECIFICATIONS)	
⊕	VALVES (SEE SPECIFICATIONS FOR TYPE)	
⊕	GAS VALVE (PLUG COCK)	
⊕	MECHANICAL GAS VALVE	
⊕	REDUCED PRESSURE BACKFLOW PREVENTER	R.P.B.P.

FIXTURE CONNECTION SCHEDULE

P-#	DESCRIPTION	C.W. (IN.)	H.W. (IN.)	WASTE (IN.)	VENT (IN.)
P-1	WATER CLOSET (H'CAP. - FLR. MTD., F.V.) AMERICAN STANDARD 2854.128 MADERA FLO-WISE, 16 1/2" RIM HEIGHT, 1.28 G.P.F., ELONGATED BOWL, SIPHON JET, FLUSH VALVE WATER CLOSET. SLOAN 111-1.28 SFSM, 1.28 GPF BATTERY SENSOR, F.V. CHURCH 9500 SSCT ELONGATED OPEN FRONT SEAT w/SELF-SUSTAINING HINGE.	1	---	4	2
P-2	LAVATORY (WALL-HUNG, PUBLIC) AMERICAN STANDARD DECLYN #0321.026 LAVATORY w/WALL HANGER. SLOAN EBF-650 BATTERY OPERATOR SENSOR FAUCET w/ET-460-A GRID STRAINER, 17 GA. CAST BRASS CHROME PLATED P-TRAP w/CHROME PLATED BRASS STOP w/BRAIDED SUPPLY.	1/2	1/2	1 1/4	1 1/4
P-3	HAND SINK w/SIDE SPLASH PANELS PROVIDED BY KEC. (ITEM #50).	1/2	1/2	1 1/4	1 1/4
P-4	JANITOR SINK FIAT MOP RECEPTOR MODEL SB2424 24"x 24"x 6" DEEP w/3" DRAIN. WALL MOUNTED FAUCET PROVIDED IN KITCHEN EQUIP. PACKAGE.	1/2	1/2	3	2
P-5	WALL HYDRANT WOODFORD 17 FREEZE RESISTANT WALL HYDRANT w/V.B., WALL FLANGE AND TEE KEY HANDLE	3/4	---	---	---
P-6	TRAP PRIMER P.P.P. PRIME RITE	1/2 TO T.P.	---	---	---
P-7	FLOOR SINK PLASTIC ODDITIES FBH400FN PVC BODY WITH 3/4 GRATE. SQUARE TOP WITH DOME BOTTOM STRAINER.	---	---	AS SHOWN	AS SHOWN
P-8	FLOOR DRAIN PLASTIC ODDITIES PHD8GR (3") PVC BODY WITH 6" S.S. FULL GRATE ROUND TOP WITH BASKET STRAINER.	---	---	AS SHOWN	AS SHOWN
P-9	NARROW TRENCH DRAIN - RESTROOMS ZURN MODEL Z886-(2)E1-(1)U1.5-POG-48" (COLOR BY ARCH.) MODULAR 2-1/2" WIDE TRENCH DRAIN WITH HDPE DRAIN GRATE. GRATE COVER SAND OR GRAY TO MATCH ADJACENT FLOOR TILE. PROVIDE w/2" DEEP SEAL P-TRAP PRIMER CONNECTION AS REQUIRED BY LOCAL CODE AUTHORITY.	---	---	AS SHOWN	AS SHOWN
P-10	TRENCH DRAIN - ICE MACHINE ZURN MODEL Z886-(2)E1-(1)U4-SVF-PS-36" MODULAR CHANNEL DRAIN, BODY OF HDPE w/END CAPS, 4" OUTLET, STAINLESS STEEL GRATE & FRAME. PROVIDE w/DEEP SEAL TRAP.	---	---	AS SHOWN	AS SHOWN

- PLUMBING FIXTURE SCHEDULE NOTES:**
- CONTRACTOR SHALL FURNISH AND INSTALL CARRIER FOR EACH FIXTURE WHICH IS WALL HUNG, UNLESS OTHERWISE NOTED. PROVIDE APPROPRIATE CARRIER PER FIXTURE TYPE AND REQUIREMENTS.
 - CONTRACTOR SHALL FURNISH AND INSTALL WATTS, ZURN, P.P.P. INC., OR EQUAL TRAP PRIMERS TO SERVE ALL APPROPRIATE FLOOR DRAINS AND/OR OPEN RECEPTACLES AS REQUIRED BY LOCAL CODES.
 - ACCEPTABLE ALTERNATE MANUFACTURERS FOR ITEMS INCLUDING BUT NOT LIMITED TO CLEANOUTS/FLOOR DRAINS/FLOOR SINKS/HUB DRAINS: ZURN, JOSAM, WADE.
 - WRAP ALL SUPPLIES AND P-TRAPS OF BARRIER FREE LAVATORIES WITH A PROTECTIVE INSULATING MATERIAL AND A SMOOTH JACKET (TRAP-WRAP OR EQUAL).
 - PLUMBING CONTRACTOR SHALL COORDINATE WITH ELEC. AND MECH. CONTRACTORS TO PROVIDE INFORMATION CONCERNING OPERATION OF WATER HEATER FOR CONNECTION OF AUTOMATIC FLUE DAMPERS AND/OR MOTORIZED COMBUSTION AIR LOUVERS (WHEN REQUIRED).
 - SHOCK ARRESTORS FOR BRANCH PIPING TO FIXTURES WITH QUICK CLOSING VALVES SHALL BE BY P.P.P. INC, ZURN (OR EQUAL), SIZED PER PDI REQUIREMENTS.
 - MAXIMUM FLOW RATES:
WATER CLOSETS: 1.28 GALLONS PER FLUSH
FAUCETS: 2.0 GALLONS PER MINUTE (SINKS AND LAVS)
FITTINGS SHALL BE MARKED AS SUCH AND CERTIFIED
 - PROVIDE WILKINS 1070 TEMPERING/MIXING VALVE AT EACH HAND WASH LAVATORY OR SINK.

A NEW LOCATION FOR
CAPTAIN D'S
 NORTH 3RD STREET
 BARDSTOWN, KY
TRITON INVESTMENTS
 1020 BLOOMFIELD RD.
 BARDSTOWN, KY 40004
Revised Bid Set



Job Number:
68FO019
Revisions:

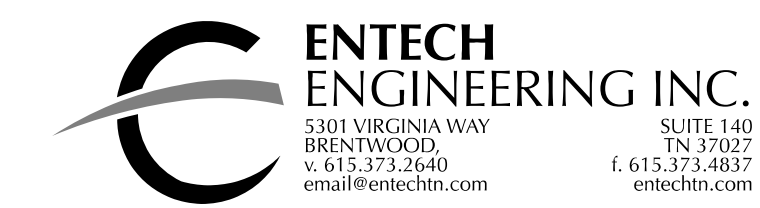
JANUARY 13, 2017

P-2

PLUMBING LEGENDS SCHEDULES & DETAILS
CD-82E-16-SD-30

80' - 0" / in.
rsouthall

C:\16095 P-3.dwg
2/17/2017
1:29:01 PM



DESIGN
and
ENGINEERING
INC. ARCHITECTS
STRUCTURAL AND CIVIL ENGINEERS
1645 Westgate Circle
Brentwood, Tennessee 37027
615-370-1779 fax: 370-9108
www.dandainc.us

KITCHEN EQUIPMENT PLUMBING CONNECTION SCHEDULE

ITEM	DESCRIPTION	WATER (IN.)		WASTE (IN.)		VENT (INCHES)	GAS (INCHES)	REMARKS
		COLD	HOT	DIRECT	INDIRECT			
9	DRINK DISPENSER	3/8	---	---	1/2	---	---	VERIFY w/EQUIP.
11	TEA/COFFEE BREWER	3/4	---	---	---	---	---	
19	STEAMER	3/4	---	---	3/4	---	---	3/4" MALE GARDEN HOSE CONNECTION
20 *	GAS FRYER/LARGE	---	---	---	---	---	3/4	120 C.F.H.
24 *	GAS FRYER/SMALL	---	---	---	---	---	3/4	140 C.F.H.
26 *	GAS FRYER/SMALL	---	---	---	---	---	3/4	122 C.F.H.
28	CONVEYOR BROILER	---	---	---	---	---	3/4	50 C.F.H.
39	DISHWASHER	---	3/4	---	1 1/2	1 1/2	---	
41	3 COMP SINK/FAUCET	1/2	1/2	---	2	2	---	
42	ICE MACHINE-CUBER	3/8	---	---	---	---	---	WATER THROUGH FILTER
42A	ICE BIN	---	---	---	3/4	3/4	---	
42B	WATER FILTER	3/8	---	---	---	---	---	
44	WATER DISPENSER	1/2	---	---	---	---	---	
61	VEGETABLE SINK	1/2	1/2	---	2	2	---	
80	DRINK HEAD w/ICE DESP.	1/2	---	---	---	---	---	VERIFY w/EQUIP.
84	ICE MAKER	3/4	---	---	3/4	3/4	---	WATER THROUGH FILTER
84A	WATER FILTER	3/8	---	---	---	---	---	
90	HAND SINK w/SPLASH PANEL	1/2	1/2	1 1/2	---	---	---	
90A	HAND SINK w/SPLASH PANEL	1/2	1/2	1 1/2	---	---	---	

NOTE:
PROVIDE WATTS SD-2 BACK FLOW DEVICE AT CONNECTION TO ITEM 9, 11, 19, 42, 42B, 44, 80, 84 & 84A.

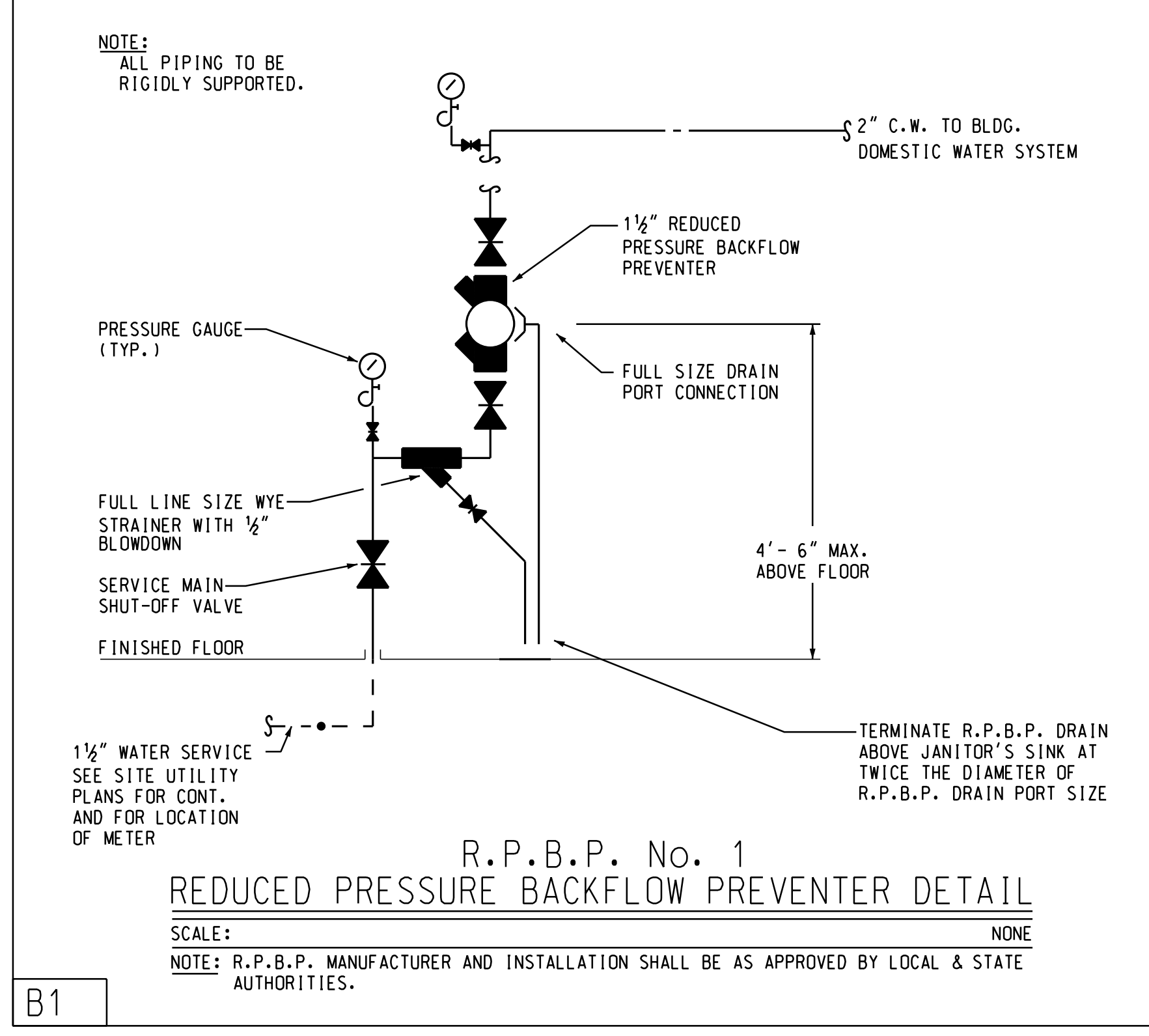
NATURAL GAS CONNECTION SCHEDULE

ITEM (GX)	DESCRIPTION	SIZE TO CONNECTION	DEMAND LOAD AT 7" W.C. U.O.N.	REMARKS
G1	WH-1 (DOMESTIC)	1 1/4"	199 C.F.H.	SEE TYPICAL GAS CONNECTION DETAIL PIPING SIZED FOR 100 FT. LONGEST RUN OF 7" W.C.
G2	WH-2 (DOMESTIC)	1 1/4"	199 C.F.H.	
G3	RTU #2	1 1/4"	250 C.F.H.	
G4	RTU #1	1 1/4"	250 C.F.H.	
G5	ROOF EXHAUST MAKE UP AIR	1 1/4"	204 C.F.H.	
G6	COOKING BATTERY #1	1 1/2"	610 C.F.H. TOTAL	
	BROILER ITEM #28	3/4"	50 C.F.H.	TOTAL DEMAND LOAD = 2,074 C.F.H. w/GAS FRYERS
	FRYER ITEM #24	3/4"	140 C.F.H.	
	FRYER ITEM #24	3/4"	140 C.F.H.	
	FRYER ITEM #24	3/4"	140 C.F.H.	
G7	COOKING BATTERY #2	1 1/4"	362 C.F.H. TOTAL	TOTAL DEMAND LOAD = 1,152 C.F.H. w/o GAS FRYERS
	FRYER ITEM #26	3/4"	122 C.F.H.	
	FRYER ITEM #20	3/4"	120 C.F.H.	
	FRYER ITEM #20	3/4"	120 C.F.H.	

NOTE:
G7 G6 PROVIDE GAS VALVE, BELOW CEILING, INTERLOCKED WITH KITCHEN HOOD EXTINGUISHING SYSTEM. PROVIDE LINE SIZE DROP TO LINE SIZE HORIZONTAL MANIFOLD AT COOKING BATTERY AND CONNECT COOKING EQUIPMENT TO MANIFOLD. PROVIDE DIRT LEG AT BOTTOM OF PIPING DROP. VERIFY CONNECTIONS TO EACH PIECE OF KITCHEN EQUIPMENT. PROVIDE P.R.V. AT EACH CONNECTION NOT PROVIDED WITH AN EQUIPMENT SUPPLIED P.R.V.

REDUCED PRESSURE BACKFLOW PREVENTER SCHEDULE

DESIGNATION	QUANTITY	SERVING	G.P.M.	P.D. (psig)	MANUFACTURER	MODEL NUMBER	REMARKS
RPBP-1	1	DOM WATER	48	11	WATTS	909-OT-S	1 1/2" SIZE



PIPING:
SOIL, WASTE AND VENT PIPING
SOIL, WASTE AND VENT PIPING 10" AND SMALLER SHALL BE SERVICE WEIGHT, HUBLESS, CAST IRON PIPE AND FITTINGS WITH NEOPRENE GASKET AND STAINLESS STEEL SHIELD AND CLAMP. PROVIDE HUB-TYPE PIPE AND FITTINGS BELOW GRADE WHERE REQUIRED BY LOCAL CODES. SCHEDULE 40 ABS OR PVC PIPE AND FITTINGS WITH SOLVENT WELD MAY BE SUBSTITUTED FOR SOIL, WASTE AND VENT PIPING ABOVE AND BELOW GRADE IF ALLOWED BY LOCAL AUTHORITY. HORIZONTAL RUNS 3" OR LESS SHALL DRAIN AT A GRADE OF 1/4" PER FOOT AND RUNS 4" OR MORE SHALL DRAIN AT 1/8" PER FOOT. PVC OR ABS PIPING WILL NOT BE ALLOWED TO BE INSTALLED IN RETURN AIR PLENUMS.

GAS PIPING
SCHEDULE 40 BLACK STEEL WITH PIPING SUPPORT COMPATIBLE WITH ROOF SYSTEM.

DOMESTIC WATER PIPING
DOMESTIC WATER PIPING 2" AND SMALLER SHALL BE PEX. EXPOSED WATER PIPING TO BE TYPE 'L' COPPER

INSTALLATION
INSTALL EXPOSED PIPING FREE OF SACS AND BENDS. PROVIDE BRACKET STANDOFFS FROM MOUNTING SURFACES SUFFICIENT TO ALLOW 1" CLEANING SPACE AROUND ALL PIPING, INCLUDING ANY ADDED PIPING INSULATION. INSTALL FITTINGS FOR CHANGES IN DIRECTION AND BRANCH CONNECTIONS. INSTALL SLEEVES FOR PIPES PASSING THROUGH CONCRETE AND MASONRY WALLS, GYPSUM BOARD PARTITIONS, CONCRETE FLOOR AND ROOF SLABS. SEAL PIPE PENETRATIONS THROUGH RATED CONSTRUCTION WITH FIRESTOPPING SEALANT MATERIAL. UNDERGROUND WATER AND SEWER LINES SHALL BE LAID IN SEPARATE TRENCHES WITH A MINIMUM HORIZONTAL SPACING AS REQUIRED BY CODE, EXCAVATED TO THE PROPER DEPTH AND GRADED TO PRODUCE THE REQUIRED FALL.

TESTING
ALL PIPES SHALL BE TESTED BY AN APPROVED METHOD BEFORE THEY ARE BACKFILLED OR CONCEALED. AFTER TESTING IS COMPLETE, THE PLUMBING CONTRACTOR SHALL DISINFECT THE POTABLE WATER SYSTEM AS REQUIRED BY LOCAL AUTHORITY.

INSULATION:
WATER PIPING
PROVIDE THERMAL INSULATION ON ALL HOT & COLD WATER, AND HORIZONTAL WASTE PIPING IN CEILING SPACES. USE SELF-SEALING CLOSED CELL FOAM OR JACKETED FIBERGLASS INSULATION WITH MANUFACTURE APPROVED ADHESIVES, SEALERS, AND COATINGS. ALL MATERIALS USED SHALL NOT EXCEED 25 FOR FLAME SPREAD, 50 FOR FUEL CONTRIBUTED, OR 50 FOR SMOKE DEVELOPED. UNLESS OTHERWISE REQUIRED BY THE LOCAL AUTHORITY OR ENERGY CODES, THE MINIMUM INSULATION LEVELS SHALL BE AS FOLLOWS:

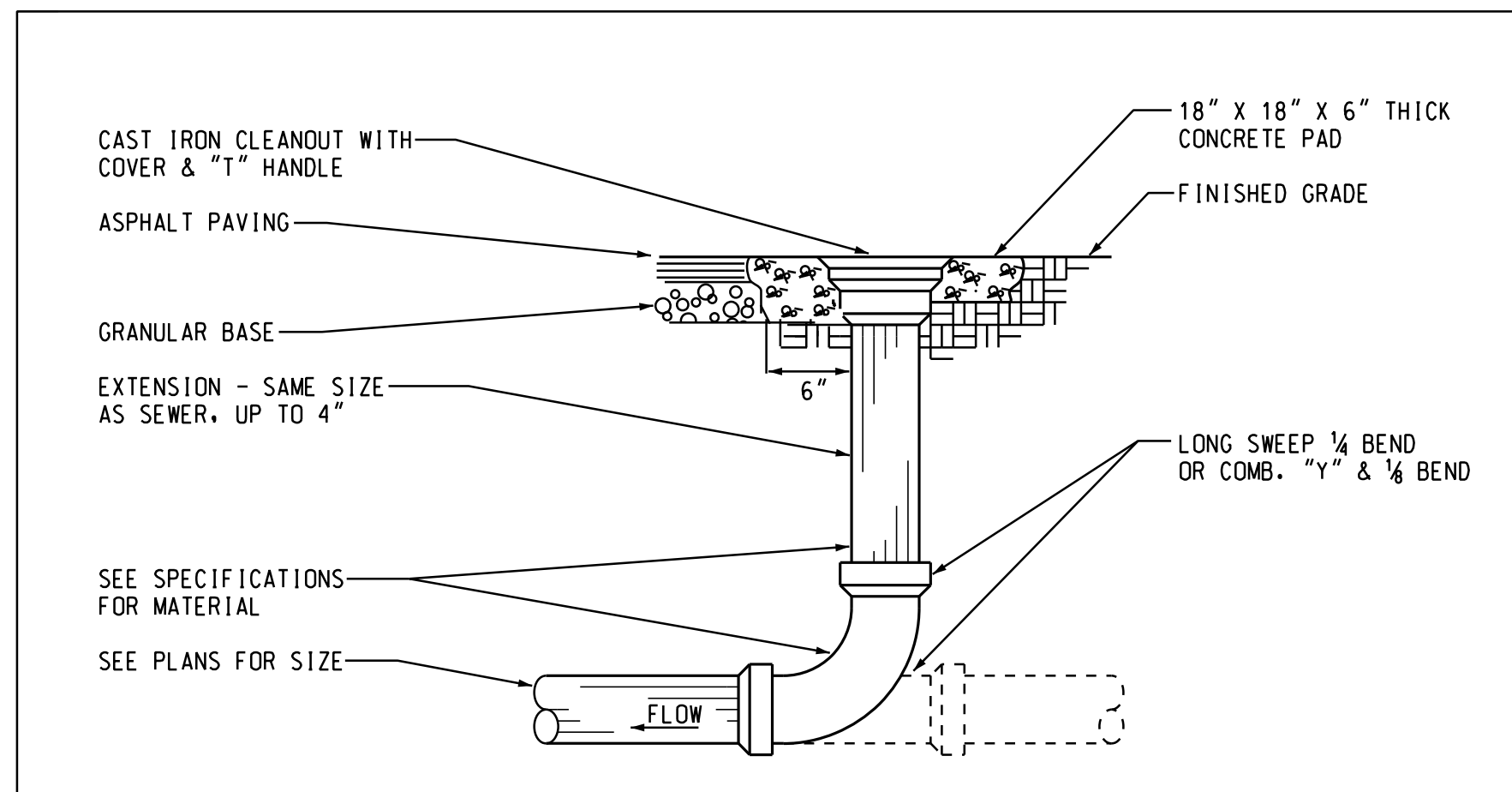
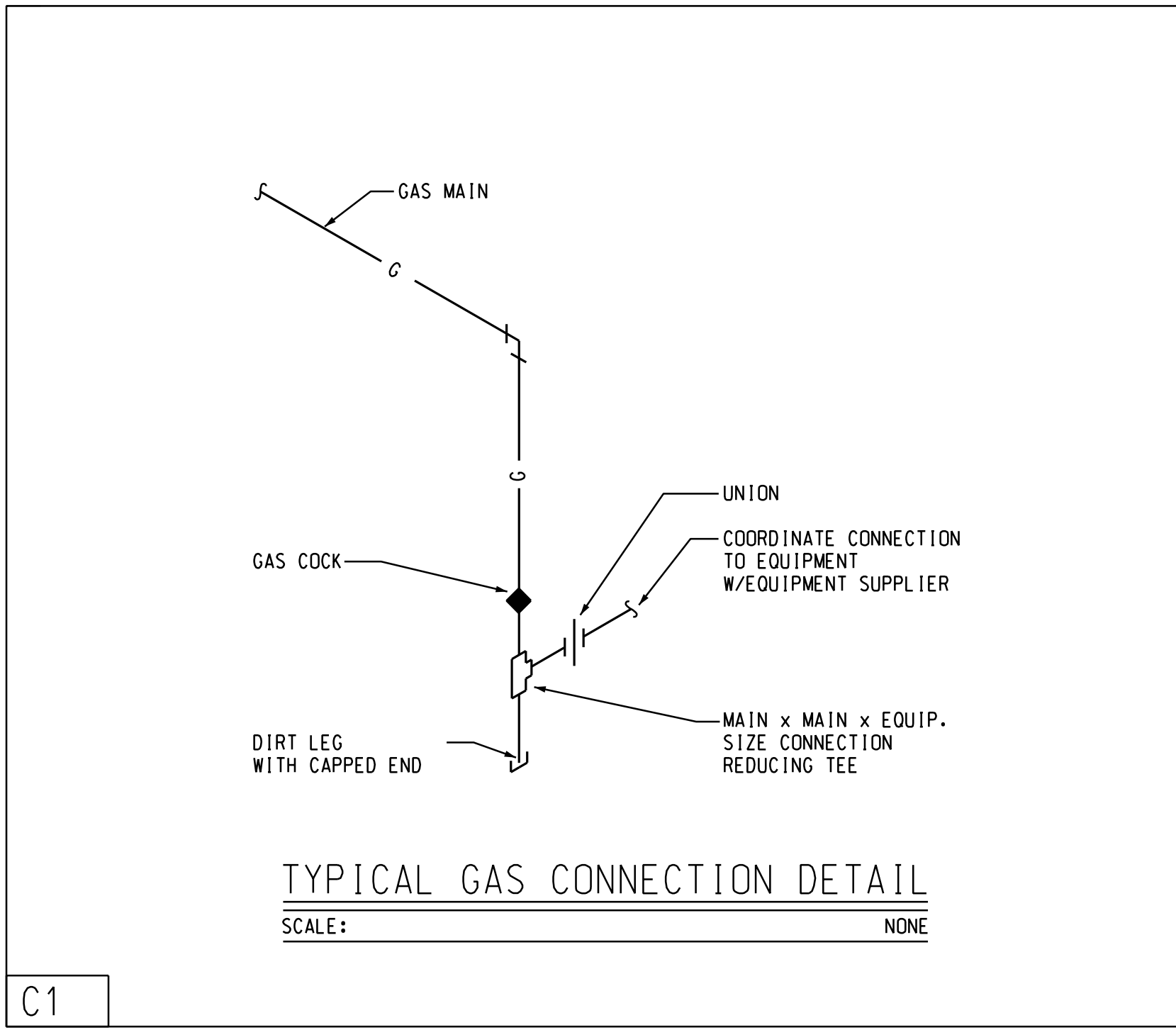
PIPE SIZE	INSULATION THICKNESS
1" DIA. OR LESS	1"
1" - 2" DIA.	1"
2" DIA. OR GREATER	1-1/2"

(INSULATION VALUE = 4 TO 4.6 / INCH)

VALVES:
GENERAL
PLUMBING CONTRACTOR TO PROVIDE VALVES WHERE INDICATED ON PLANS AND AS NECESSARY FOR PROPER SYSTEM OPERATION AND COMPONENT ISOLATION.

VALVES
PROVIDE VALVES FOR WORKING PRESSURE IN WATER PIPING OF 125 PSI OR GREATER. UNLESS NOTED OTHERWISE VALVES SHALL BE AS FOLLOWS:

VALVE TYPE	MANUFACTURER	MODEL NO.
CHECK VALVE (UP TO 2")	NIBCO	#S-22
FULL PORT BALL VALVE (UP TO 3")	NIBCO	#S-FP-600
GATE VALVE (UP TO 3")	NIBCO	#S-113
TEMPERATURE AND PRESSURE RELIEF VALVE	WILKINS	#TP1100A



CONDENSATE DRAINAGE PIPING
THE PLUMBING CONTRACTOR SHALL PROVIDE CONDENSATE DRAINS FOR ROOFTOP UNITS. CONDENSATE DRAINAGE PIPING SHALL BE TYPE "M" COPPER TUBING WITH WROUGHT COPPER SWEAT FITTINGS JOINED WITH 50/50 SOLDER.

HANGERS & SUPPORTS
THE PLUMBING CONTRACTOR SHALL FURNISH ALL PIPE SUPPORTS REQUIRED FOR HIS EQUIPMENT AND MATERIAL. ALL HORIZONTAL RUNS OF PIPING SHALL BE SUPPORTED BY PIPE HANGERS SPACED NOT MORE THAN 10 FEET O.C. FOR PIPES 1-1/4" AND LARGER, AND 8 FEET O.C. FOR PIPES SMALLER THAN 1-1/4" AND A EACH JOINT FOR SOIL OR WASTE PIPE. ADDITIONAL SUPPORTS SHALL BE PROVIDED WHERE REQUIRED TO PREVENT SAGGING. HANGERS AND PIPE ATTACHMENTS TO BE FACTORY FABRICATED WITH GALVANIZED COATINGS; NONMETALLIC COATED FOR HANGERS IN DIRECT CONTACT WITH COPPER TUBING.

CONNECTIONS
INSTALL UNIONS ADJACENT TO EACH VALVE AND AT FINAL CONNECTION TO EACH PIECE OF EQUIPMENT. INSTALL DIELECTRIC COUPLINGS TO CONNECT PIPING MATERIALS OF DISSIMILAR METALS. SCREW JOINT STEEL PIPING UP TO AND INCLUDING 1-1/2". WELD PIPING USE LEAD FREE SOLDER FOR SOLDERING DOMESTIC WATER COPPER PIPE.

CLEANOUTS
PROVIDE J.R. SMITH OR EQUIVALENT FLOOR AND WALL CLEANOUTS AS INDICATED ON THE DRAWINGS OR WHERE REQUIRED IN ALL SOIL, WASTE, AND DRAIN LINES. IN AREAS WITH CERAMIC TILE OR CARPETED FLOORING, PROVIDE CLEANOUTS WITH SQUARE, ADJUSTABLE, NICKEL BRONZE TOP. IN AREAS WITH RESILIENT FLOORING, PROVIDE CLEANOUTS WITH SQUARE, ADJUSTABLE, NICKEL BRONZE TOP WITH TILE RECESS. CLEANOUTS SHALL BE SAME SIZE AS PIPE EXCEPT THAT CLEANOUTS LARGER THAN 4" WILL NOT BE REQUIRED. WHERE CLEANOUTS OCCUR IN WALLS OF FINISHED AREAS, THEY SHALL BE CONCEALED BEHIND CHROME PLATED ACCESS COVERS.



A NEW LOCATION FOR
CAPTAIN D'S
NORTH 3RD STREET
BARDSTOWN, KY

TRITON INVESTMENTS
1020 BLOOMFIELD RD.
BARDSTOWN, KY 40004



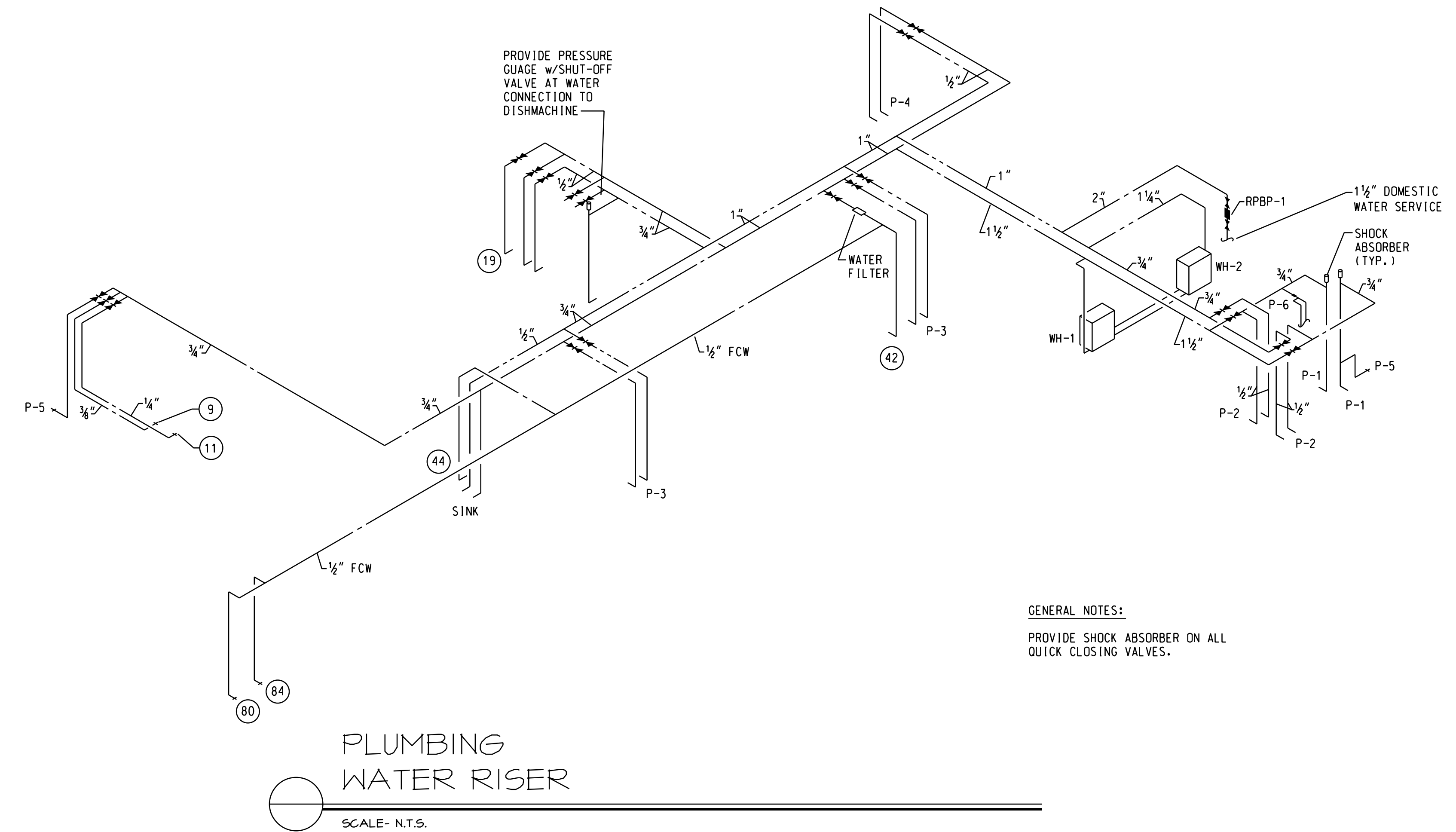
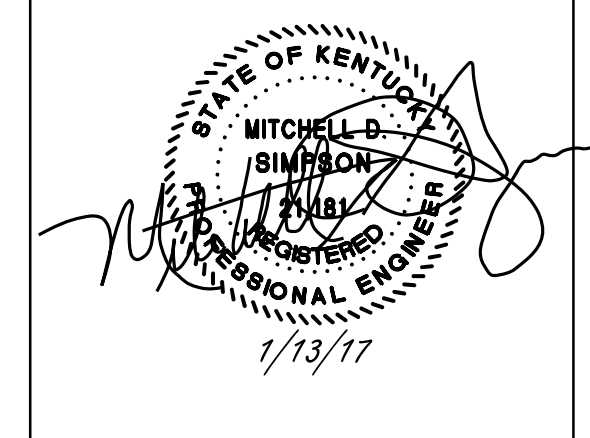
Job Number:
68FO019

Revisions:
2/16/17 DRAWING UPDATE

JANUARY 13, 2017
P-3
PLUMBING
DETAILS
CD-82G-16-SD-32

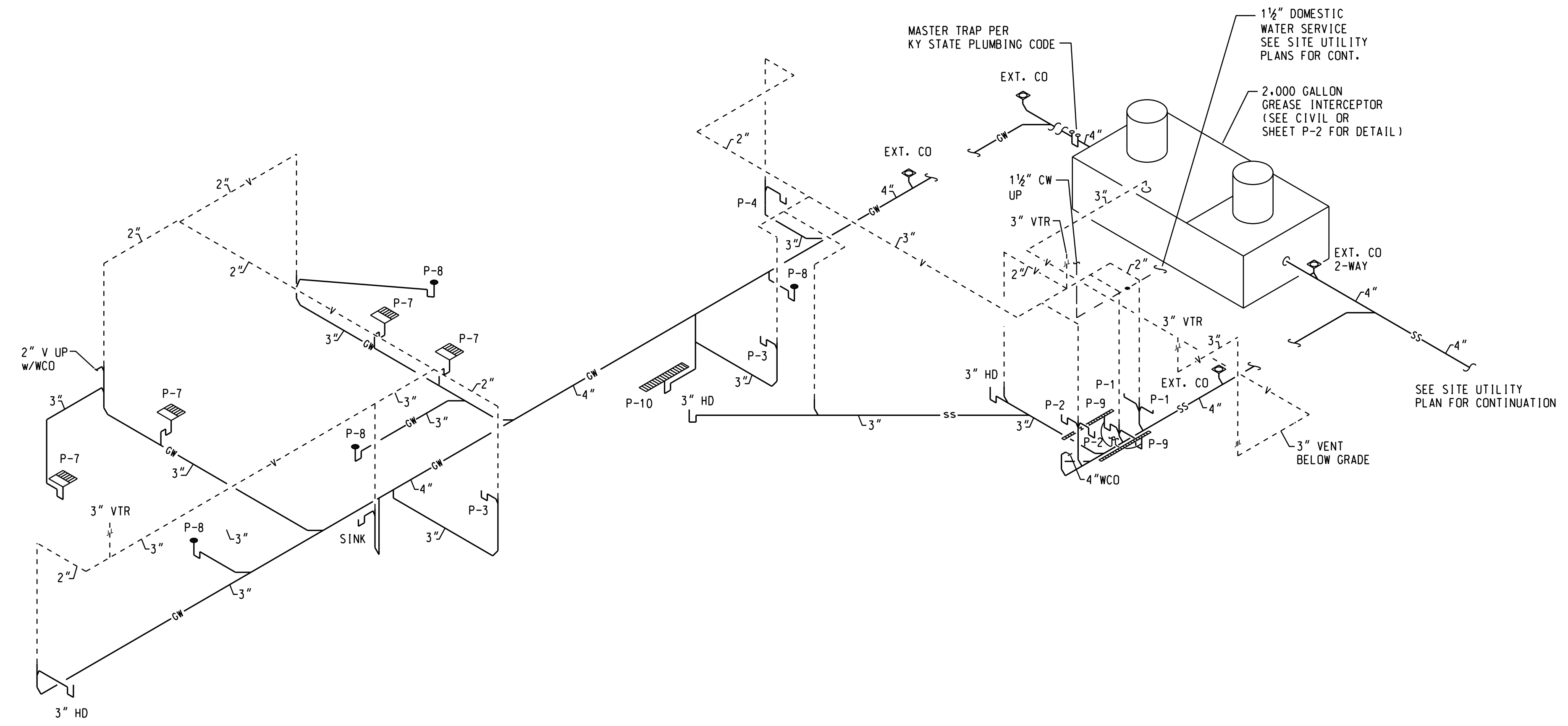
80' x 100' / in. / south

C:\16285 P-4.dwg
1/11/2017
1:31:53 PM



GENERAL NOTES:
PROVIDE SHOCK ABSORBER ON ALL QUICK CLOSING VALVES.

PLUMBING WATER RISER
SCALE- N.T.S.



PLUMBING DW&V RISER
SCALE- N.T.S.

80' = 1" in.
rsouthall

A NEW LOCATION FOR
CAPTAIN D'S
NORTH 3RD STREET
BARDSTOWN, KY
TRITON INVESTMENTS
1020 BLOOMFIELD RD.
BARDSTOWN, KY 40004



Job Number: 68F0019
Revisions:

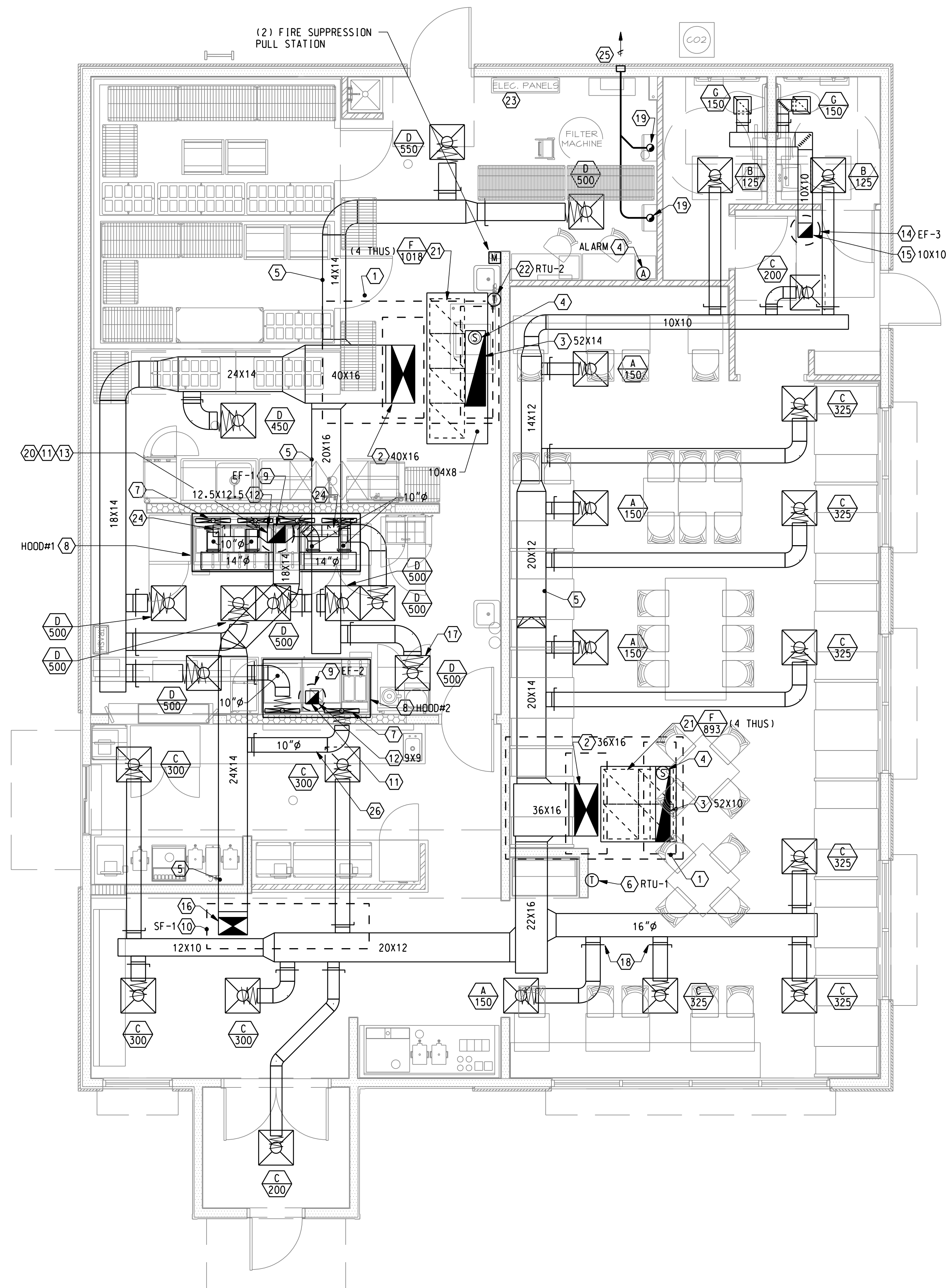
JANUARY 13, 2017
P-4
WATER & DW&V
RISER DIAGRAMS
CD-82E-16-SD-30

Revised Bid Set

C:\16285\M-1.DGN
1/11/2017
1:29:55 PM



- HVAC PLAN NOTES:**
1. ROOFTOP UNIT. REFER TO MECHANICAL ROOF PLAN.
 2. SUPPLY AIR DUCT FROM UNIT ON ROOF. OFFSET IN CURB AS REQ'D TO AVOID ROOF STRUCTURE.
 3. RETURN AIR DUCT FROM UNIT ON ROOF. OFFSET IN CURB AS REQ'D TO AVOID ROOF STRUCTURE.
 4. DUCT MOUNTED SMOKE DETECTOR FOR UNIT SHUTDOWN. PROVIDE AN AUDIO AND VISUAL ALARM IN AN APPROVED LOCATION. ALARM SHALL BE LABELED "DUCT TROUBLE".
 5. DUCTWORK LOCATED BELOW ROOF JOISTS. TYPICAL.
 6. THERMOSTAT SENSOR FOR UNIT DESIGNATED. MOUNT ON WALL @ 60" A.F.F.
 7. MAKE-UP AIR CONNECTION AT HOOD. REFER TO HOOD DRAWINGS, TYPICAL.
 8. KITCHEN HOOD, FURNISHED BY HOOD VENDOR, RECEIVED & INSTALLED BY MECHANICAL CONTRACTOR. REFER TO HOOD DRAWINGS.
 9. KITCHEN HOOD EXHAUST FAN ON ROOF. REFER TO MECHANICAL ROOF PLAN. INTERLOCK WITH HOOD CONTROLS.
 10. MAKE-UP AIR UNIT SF-1 ON ROOF. REFER TO MECHANICAL ROOF PLAN.
 11. KITCHEN HOOD EXHAUST COLLAR. WELD EXHAUST DUCT TO COLLAR. REFER TO HOOD DRAWINGS, TYPICAL.
 12. KITCHEN HOOD EXHAUST DUCT UP TO FAN ON ROOF. DUCT SHALL BE 16 GA. EXTERNALLY WELDED LIQUID TIGHT STEEL. DUCT SHALL BE ENCAPSULATED WITH A RATED DUCT WRAP. REFER TO DETAIL ON SHEET M-4.
 13. HOOD EXHAUST DUCT SHALL SLOPE DOWN TO HOOD AT A MINIMUM OF 1/4" PER FT.. TYPICAL.
 14. RESTROOM EXHAUST FAN ON ROOF. REFER TO MECHANICAL ROOF PLAN.
 15. RESTROOM EXHAUST DUCT UP TO FAN ON ROOF.
 16. MAKE-UP AIR DUCT FROM UNIT ON ROOF. TRANSITION FROM UNIT DUCT SIZE TO 20"Ø TO RUN BETWEEN ROOF JOISTS.
 17. PROVIDE INSULATED PLENUM ABOVE SUPPLY GRILLE. TYPICAL FOR THIS TYPE OF AIR DEVICE.
 18. PROVIDE MANUAL VOLUME CONTROL DAMPER, TYPICAL.
 19. REFER TO PLUMBING DRAWINGS FOR WATER HEATING VENTING. COORDINATE WITH PLUMBING CONTRACTOR.
 20. PROVIDE CODE REQUIRED CLEANOUT AT HOOD EXHAUST DUCT ELBOWS. TYPICAL. PROVIDE SIGN AT CLEANOUT THAT READS "GREASE DUCT CLEANOUT - DO NOT OBSTRUCT"
 21. PROVIDE PLENUM ABOVE RETURN AIR GRILLE. COORDINATE WITH STRUCTURE. TYPICAL.
 22. THERMOSTAT SENSOR FOR UNIT DESIGNATED. MOUNT @ 60" A.F.F.
 23. THERMOSTAT FOR ROOFTOP UNITS MOUNTED IN MAIN ELECTRICAL / TEMPERATURE PANEL.
 24. 8x8 EXHAUST CONNECTION.
 25. PROVIDE CONCENTRIC VENTING AND INSTALL PER MANUFACTURER'S RECOMMENDATIONS. SEE ARCHITECTURAL EXTERIOR ELEVATIONS FOR EXACT MOUNTING HEIGHT AND LOCATION.
 26. CRITICAL LOCATION - HOLD DUCTWORK AS HIGH AS POSSIBLE TO ALLOW INSTALLATION OF LIGHT FIXTURES BELOW.
 27. (2) FIRE SUPPRESSION PULL STATION.



H.V.A.C.
FLOOR PLAN
SCALE 1/4" = 1'-0"

4'-0" / in.
rsouthall

A NEW LOCATION FOR
CAPTAIN D'S
NORTH 3RD STREET
BARDSTOWN, KY

TRITON INVESTMENTS
1020 BLOOMFIELD RD.
BARDSTOWN, KY 40004



Job Number: 68FO019
Revisions:

JANUARY 13, 2017
M-1
H.V.A.C.
FLOOR PLAN
CD-82E-16-SD-30

Revised Bid Set

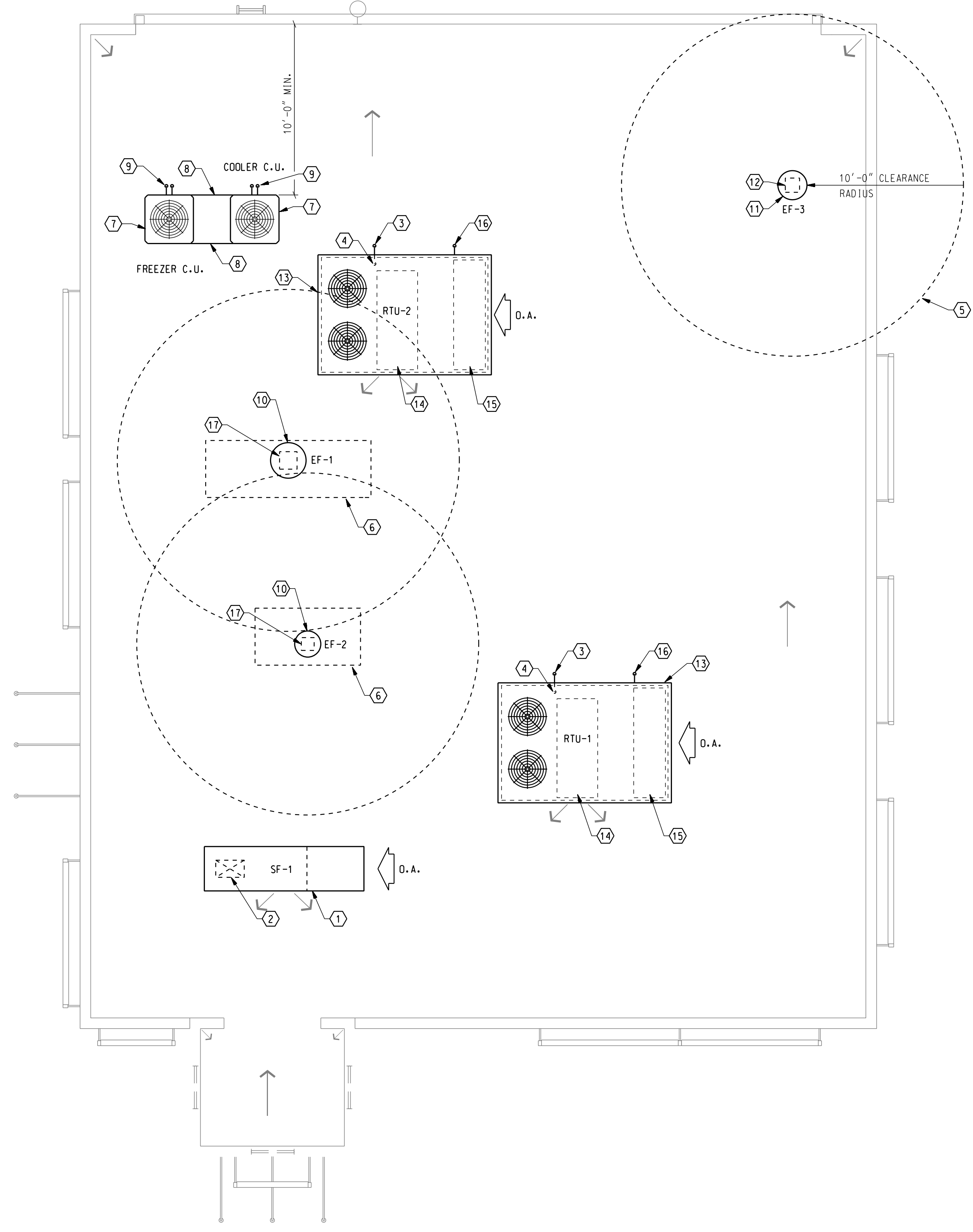
C:\16285\M-2.dwg
1/11/2017
1:30:14 PM

4.0' / in.
rsouthall



HVAC PLAN NOTES:

1. MAKE-UP AIR UNIT, MOUNT ON FULL PERIMETER ROOF CURB. COORDINATE LOCATION WITH STRUCTURE. INTERLOCK WITH EXHAUST HOOD CONTROLS. COORDINATE ROOF PENETRATION AND FLASHING WITH G.C. INSTALLED BY M.C.
2. PROVIDE MAKE-UP AIR SUPPLY DUCT DOWN THROUGH ROOF. REFER TO MECHANICAL PLAN FOR SIZE AND CONTINUATION.
3. PROVIDE THRU THE BASE GAS CONNECTION TO HVAC UNIT, PROVIDE DIRT LEG, GAS VALVE AND UNION.
4. GAS LINE UP FROM BELOW ROOF TO HVAC UNIT. SEE PLUMBING DRAWING FOR CONTINUATION.
5. CLEARANCE RADIUS, TYPICAL.
6. EXHAUST HOOD BELOW.
7. WALK-IN BOX CONDENSING UNIT PRE INSTALLED BY REFRIGERATION CONTRACTOR. FURNISHED IN VENDOR PACKAGE. COORDINATE WITH GENERAL CONTRACTOR.
8. ROOF CURB FOR CONDENSING UNITS PROVIDED IN VENDOR PACKAGE INSTALLED BY G.C. TYPICAL.
9. REFRIGERANT LINES DOWN TO EQUIPMENT EVAPORATOR. SEE DETAIL #3.
10. KITCHEN HOOD EXHAUST FAN MOUNTED ON FULL PERIMETER NON-COMBUSTIBLE ROOF CURB. COORDINATE LOCATION WITH STRUCTURE. PROVIDE PROPER CLEARANCES. INTERLOCK W/ HOOD CONTROLS. COORDINATE FLASHING W/ G.C. FAN AND CURB FURNISHED IN VENDOR PACKAGE. INSTALLED BY M.C.
11. RESTROOM EXHAUST FAN, FURNISHED IN VENDOR PACKAGE, INSTALLED BY M.C. MOUNTED ON FULL PERIMETER ROOF CURB. COORDINATE WITH STRUCTURE. COORDINATE FLASHING WITH G.C.
12. PROVIDE RESTROOM EXHAUST DUCT DOWN THROUGH ROOF. REFER TO MECHANICAL PLAN FOR SIZE AND CONTINUATION.
13. GAS FIRED PACKAGED ROOF TOP UNIT, FURNISHED IN VENDOR PACKAGE. INSTALLED BY MECHANICAL CONTRACTOR. MOUNT ON FULL PERIMETER ROOF CURB. COORDINATE ROOF PENETRATION AND FLASHING WITH G.C.
14. SUPPLY AIR DUCT DOWN WITHIN CURB. REFER TO MECHANICAL PLAN FOR CONTINUATION. OFFSET DUCT IN CURB AS REQUIRED.
15. RETURN AIR DUCT DOWN WITHIN CURB. REFER TO MECHANICAL PLAN FOR CONTINUATION. OFFSET DUCT IN CURB AS REQUIRED.
16. PROVIDE TRAPPED CONDENSATE DRAIN DOWN THRU ROOF. REFER TO PLUMBING DRAWINGS.
17. PROVIDE 16 GA. WELDED LIQUID TIGHT STEEL EXHAUST DUCT DOWN THRU ROOF. DUCT SHALL BE WRAPPED WITH A LISTED GREASE DUCT WRAP. REFER TO THE MECHANICAL PLAN FOR SIZE AND CONTINUATION.



**H.V.A.C.
 ROOF PLAN**
 SCALE 1/4" = 1'-0"

A NEW LOCATION FOR
CAPTAIN D'S
 NORTH 3RD STREET
 BARDSTOWN, KY

TRITON INVESTMENTS
 1020 BLOOMFIELD RD.
 BARDSTOWN, KY 40004

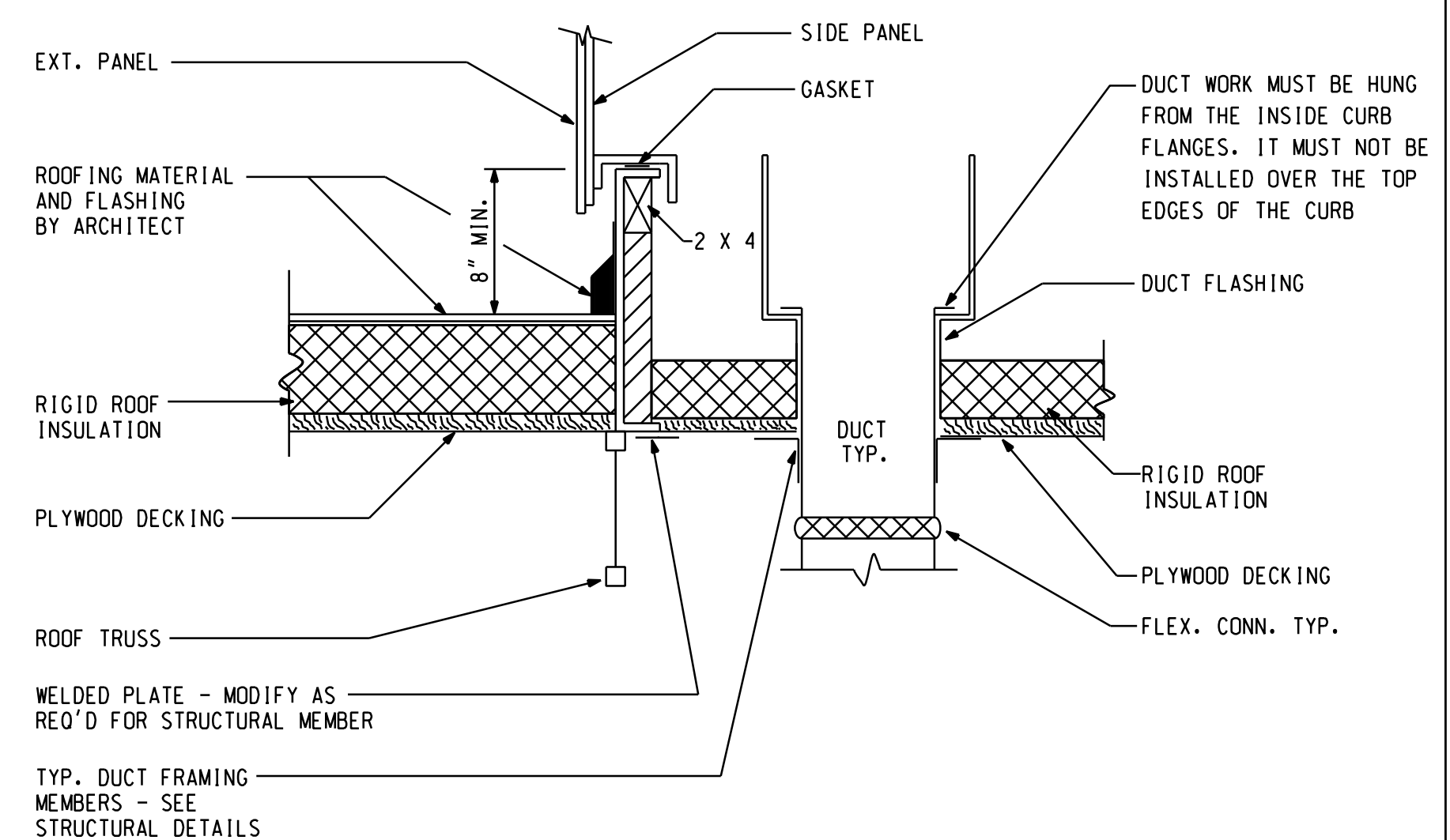


Job Number: 68F0019
 Revisions:

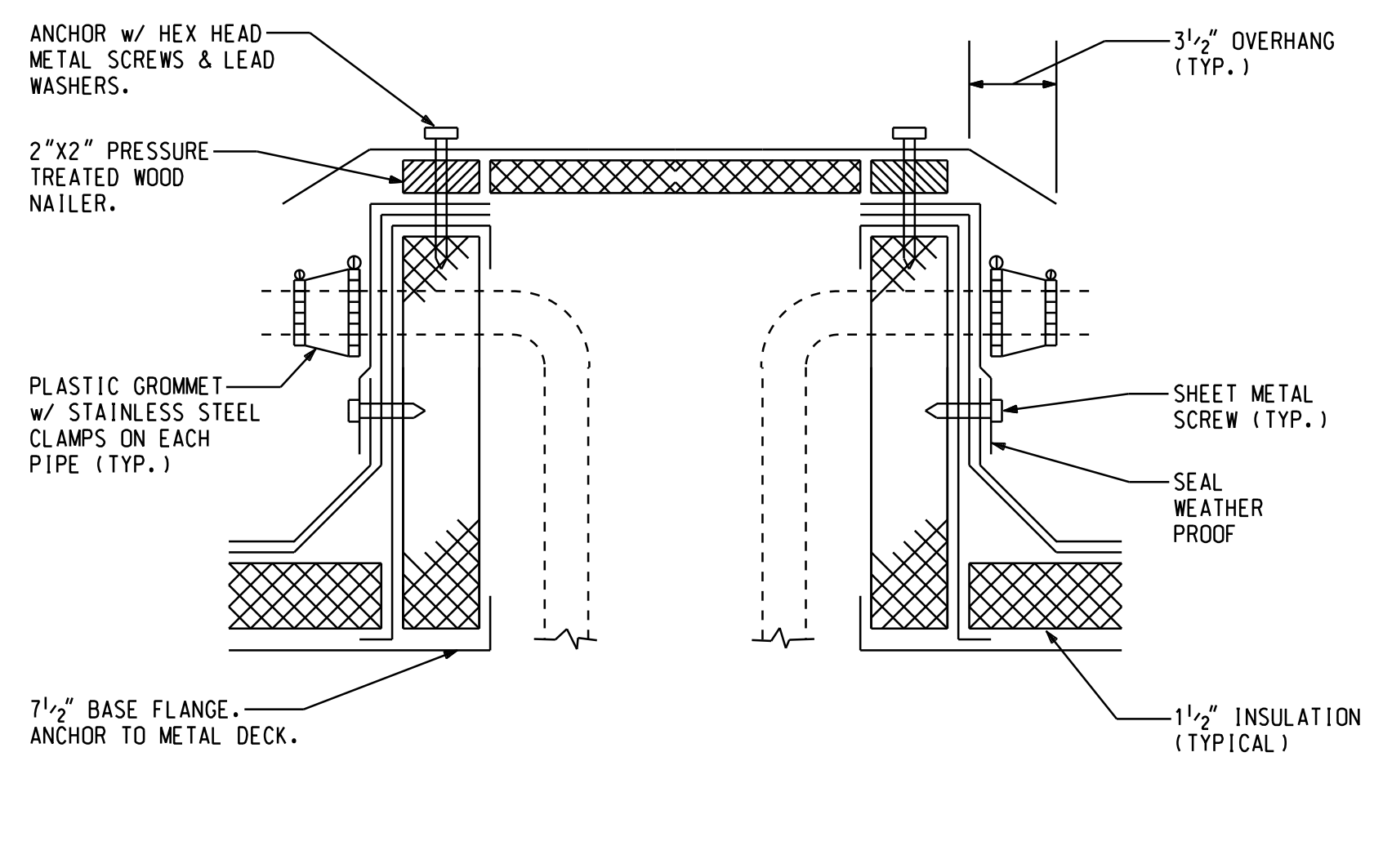
JANUARY 13, 2017
M-2
 H.V.A.C.
 ROOF PLAN
 CD-82E-16-SD-30

Revised Bid Set

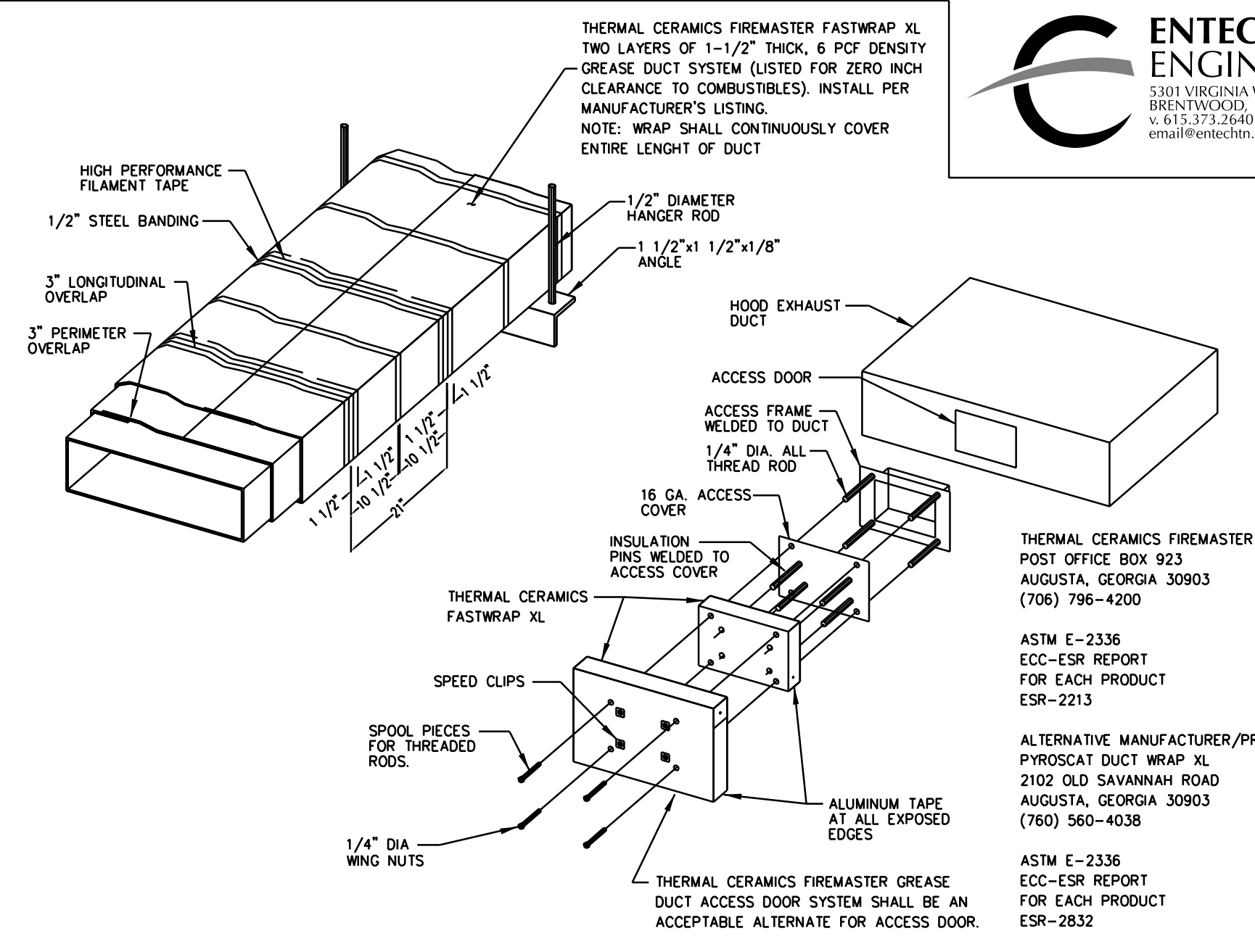
6:\16295\M-4.dwg
1/11/2017
1:30:50 PM



ROOFTOP A.C. UNIT CURB
SCALE: NONE



PIPE CURB DETAIL
SCALE: NONE

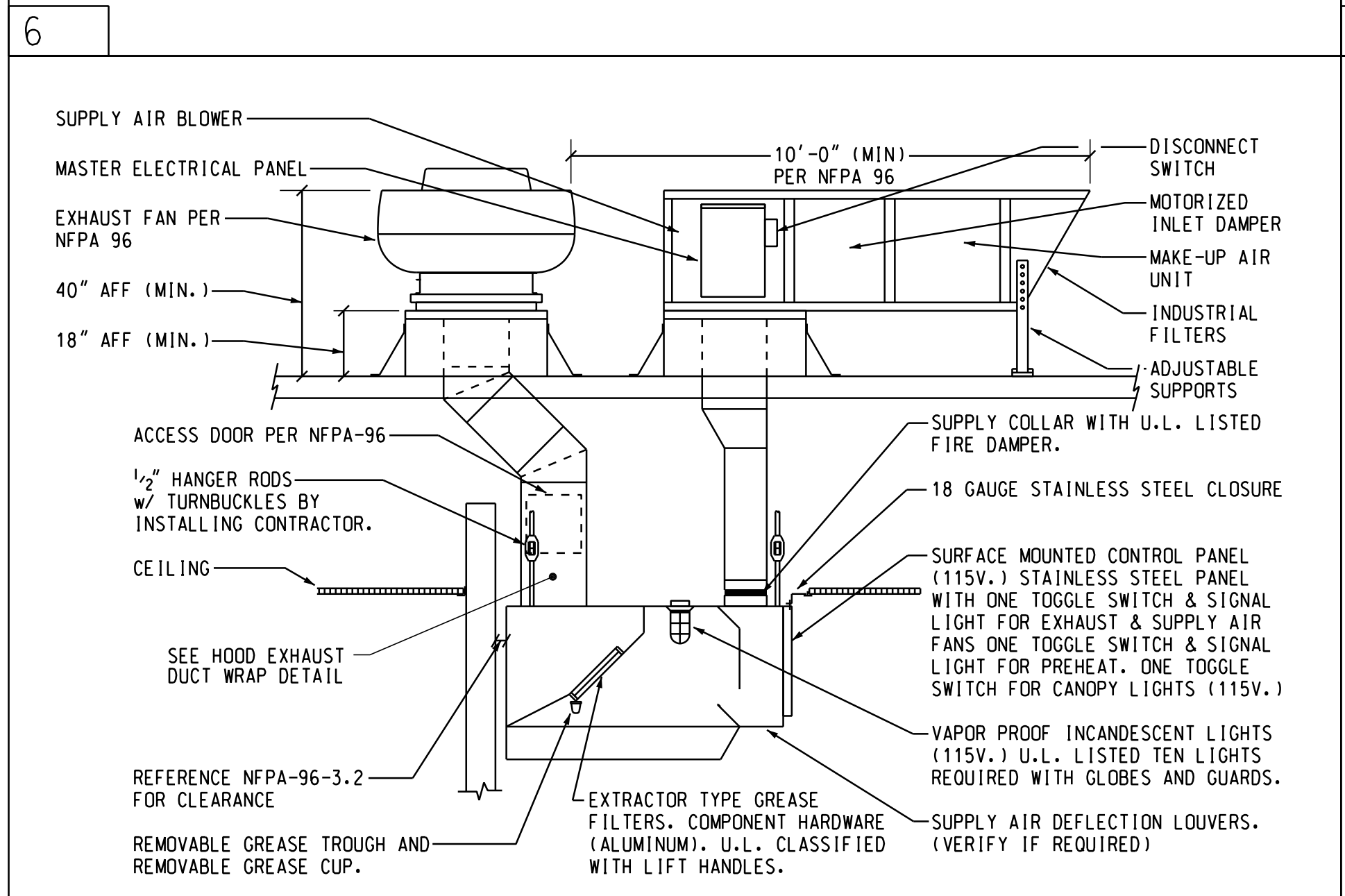


HOOD EXHAUST DUCT WRAP
SCALE: NONE

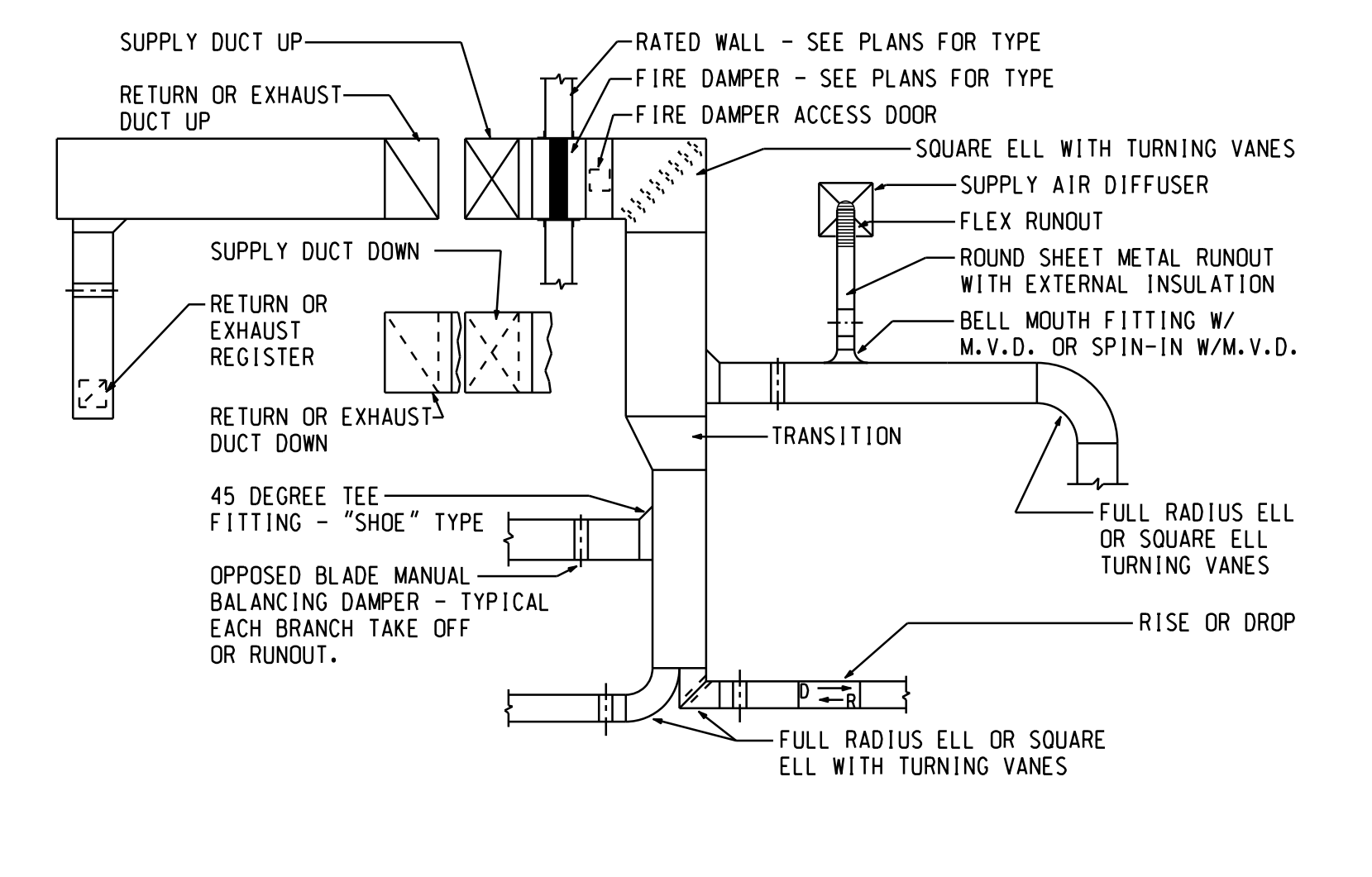
ENTECH ENGINEERING INC.
5301 VIRGINIA WAY
BRENTWOOD, TN 37027
v. 615.373.2640
e. entech@entech.com

DESIGN and ENGINEERING
INC ARCHITECTS
STRUCTURAL AND CIVIL ENGINEERS
1645 Westgate Circle
Brentwood, Tennessee 37027
615-370-1779 fax: 370-9108
www.dandei.com

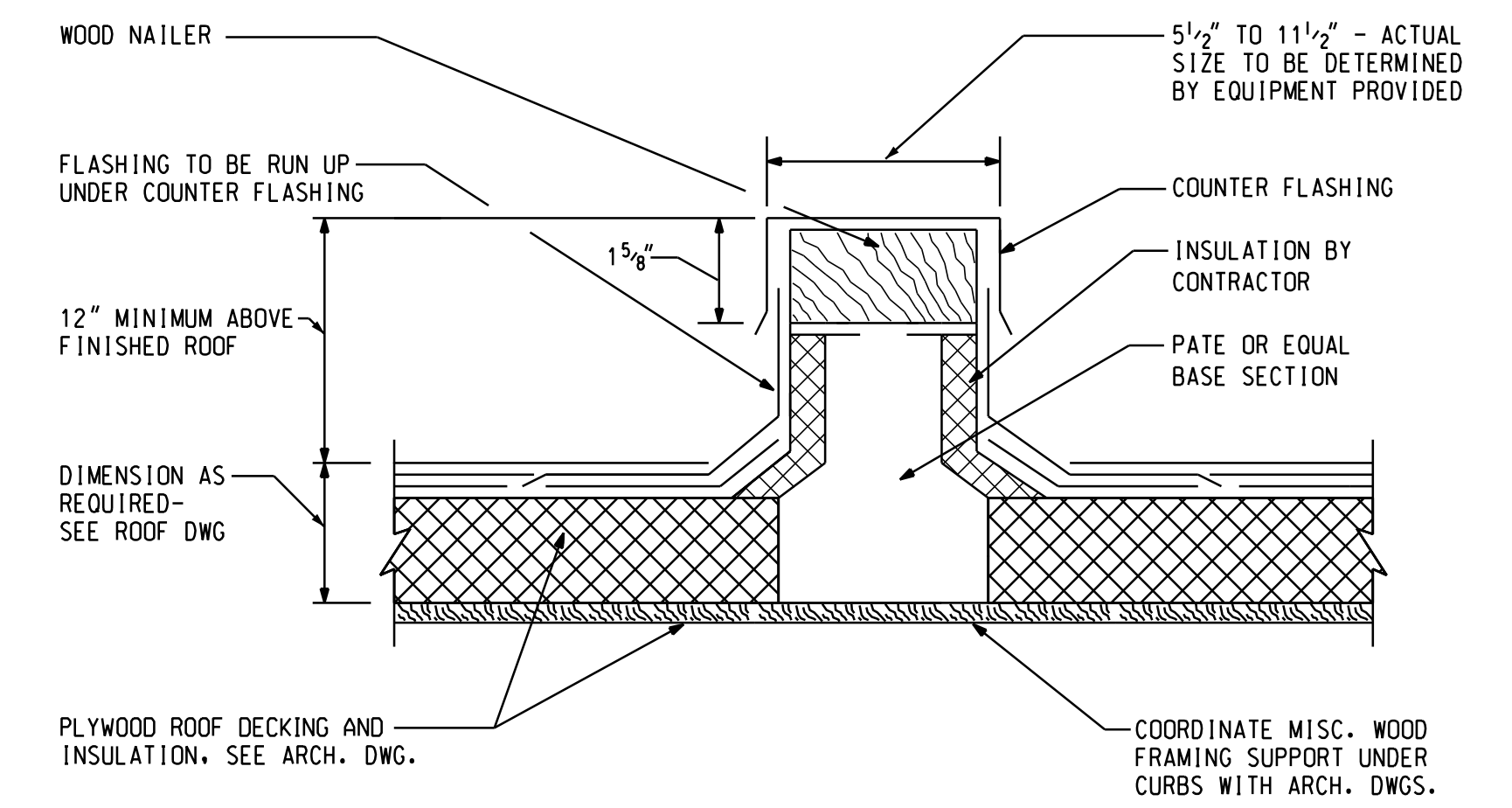
STATE OF KENTUCKY
MITCHELL D. SIMMONS
Professional Engineer
1/13/17



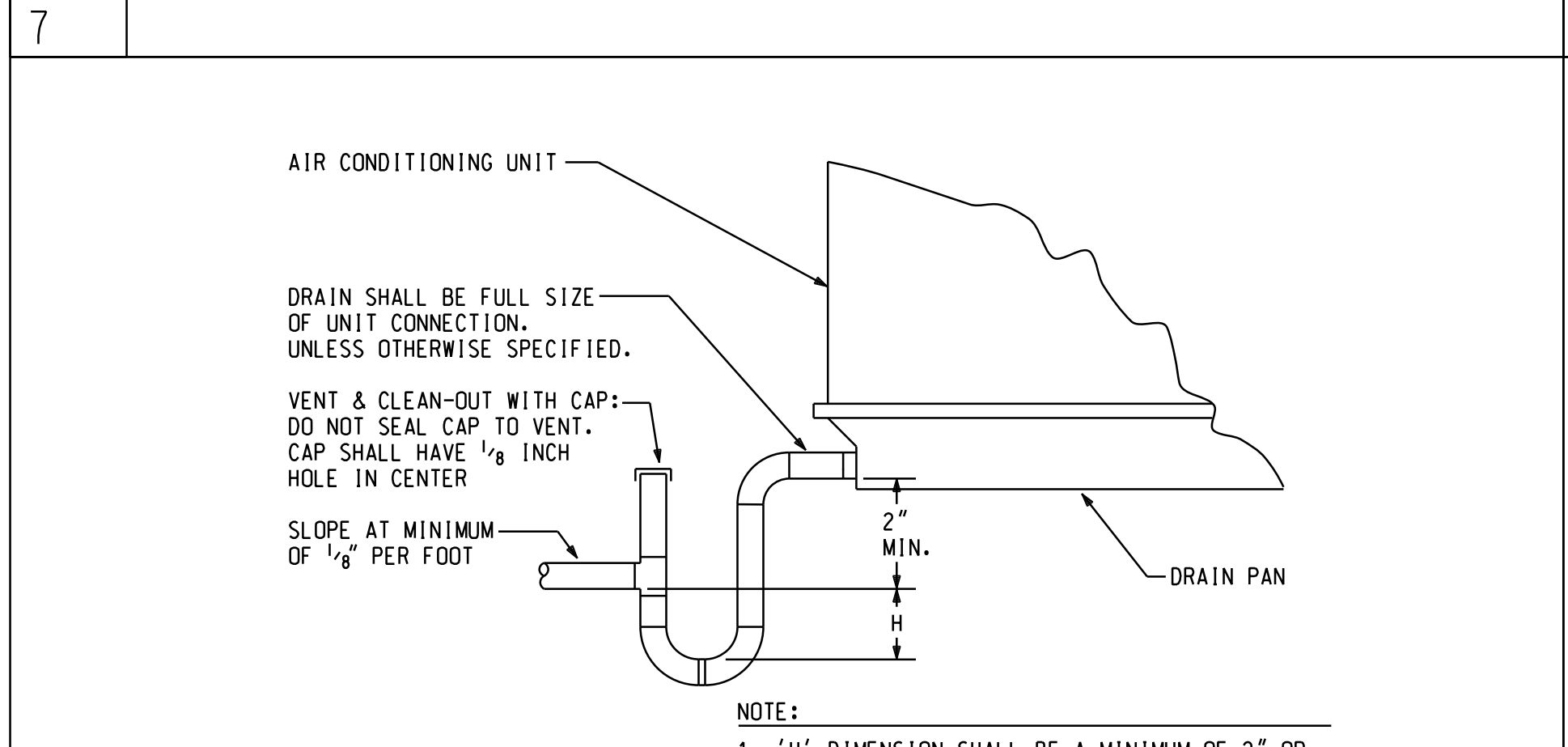
KITCHEN HOOD DETAIL
SCALE: NONE



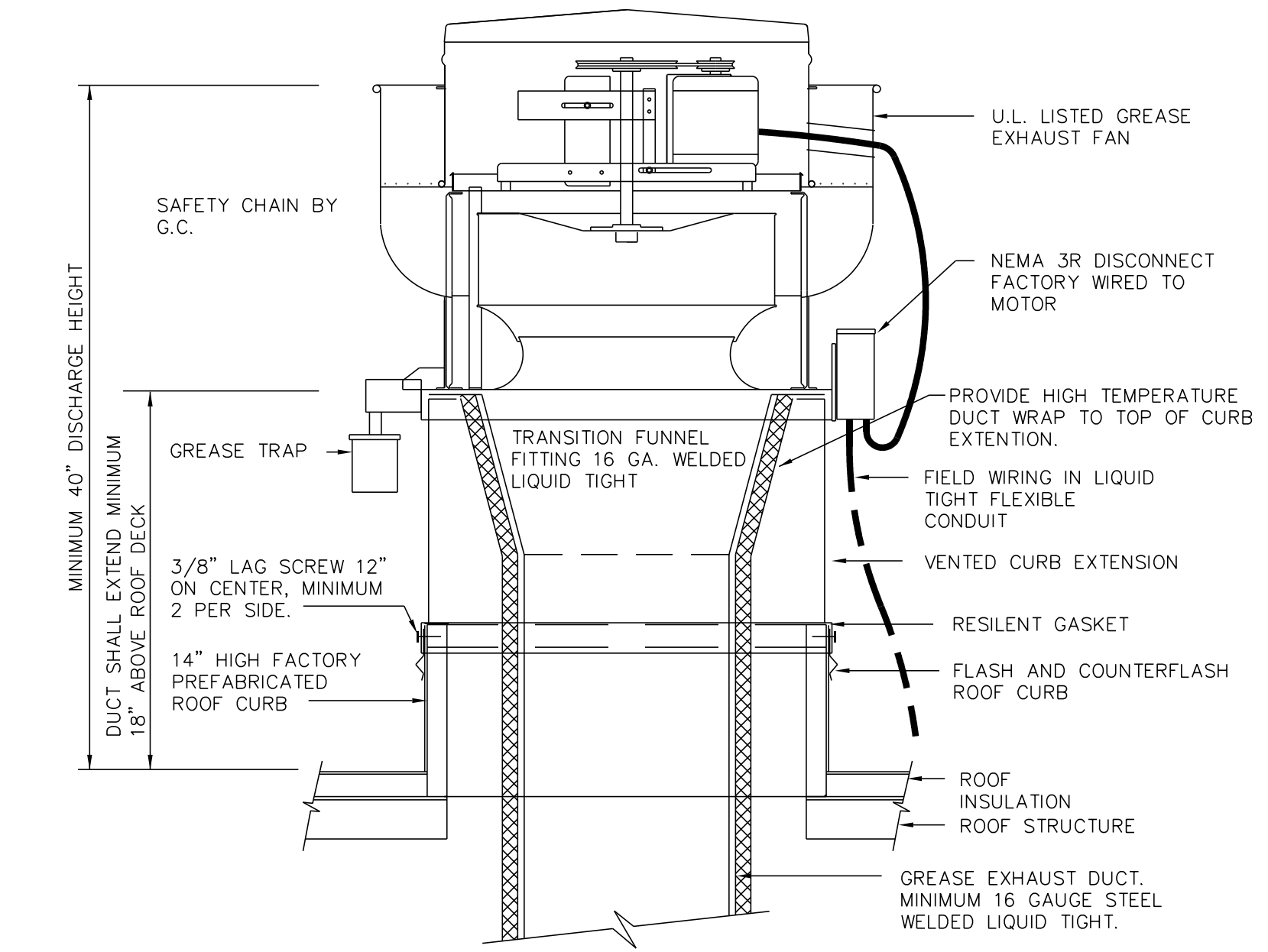
TYPICAL SUPPLY, RETURN OR EXHAUST DUCT SYSTEM
SCALE: NONE



PRE-FAB EQUIPMENT MOUNTING SUPPORT
SCALE: NONE



CONDENSATE DRAIN FROM DRAW-THRU UNITS
SCALE: NONE



KITCHEN EXHAUST FAN DETAIL
SCALE: NONE

MINIMUM DUCT SEAL LEVEL

DUCT LOCATION	DUCT TYPE		
	SUPPLY		EXHAUST
	≤ 2 IN. W.C. ^b (500 Pa)	≥ 2 IN. W.C. ^b (500 Pa)	RETURN
OUTDOORS ^c	A	A	C
UNCONDITIONED SPACES	B	A	C
CONDITIONED SPACES	C	B	B

a. SEE SEAL CLASS TABLE BELOW.
b. DUCT DESIGN STATIC PRESSURE CLASSIFICATION.
c. INCLUDES INDIRECTLY CONDITIONED SPACES, SUCH AS RETURN AIR PLENUMS.

DUCT SEAL CLASSES

DUCT SEAL CLASS	SEALING REQUIREMENTS ^a
A	ALL TRAVERSE JOINTS, LONGITUDINAL SEAMS, & DUCT WALL PENETRATIONS. PRESSURE SENSITIVE TAPE SHALL NOT BE USED AS THE PRIMARY SEALANT.
B	ALL TRAVERSE JOINTS, LONGITUDINAL SEAMS. PRESSURE SENSITIVE TAPE SHALL NOT BE USED AS THE PRIMARY SEALANT.
C	TRAVERSE JOINTS ONLY.

a. LONGITUDINAL SEAMS ARE JOINTS ORIENTED IN THE DIRECTION OF AIRFLOW. TRANSVERSE JOINTS ARE CONNECTION OF TWO DUCT SECTIONS & ARE ORIENTED PERPENDICULAR TO AIRFLOW. DUCT WALL PENETRATIONS ARE OPENINGS MADE BY ANY SCREW FASTENER, PIPE, ROD OR WIRE. SPIRAL LOCK SEAMS IN ROUND & FLAT OVAL DUCTS NEED NOT TO BE SEALED. ALL OTHER CONNECTIONS ARE CONSIDERED TRANSVERSE JOINTS, INCLUDING BUT NOT LIMITED TO SPIN-INS, TAPS & OTHER V BRANCH CONNECTIONS. ACCESS DOOR FRAMES AND JAMBS, AND DUCT CONNECTIONS TO EQUIPMENT.

A NEW LOCATION FOR
CAPTAIN D'S
NORTH 3RD STREET
BARDSTOWN, KY
TRITON INVESTMENTS
1020 BLOOMFIELD RD.
BARDSTOWN, KY 40004



Job Number:
68FO019
Revisions:

JANUARY 13, 2017
M-4
H.V.A.C. DETAILS
CD-82E-16-SD-30

Revised Bid Set