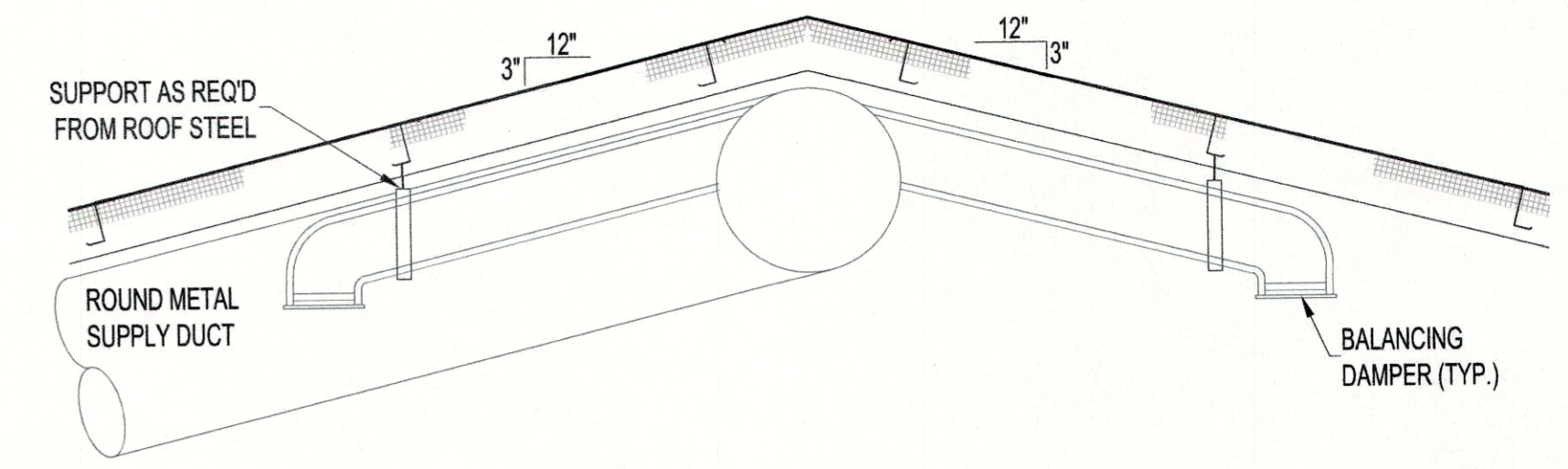
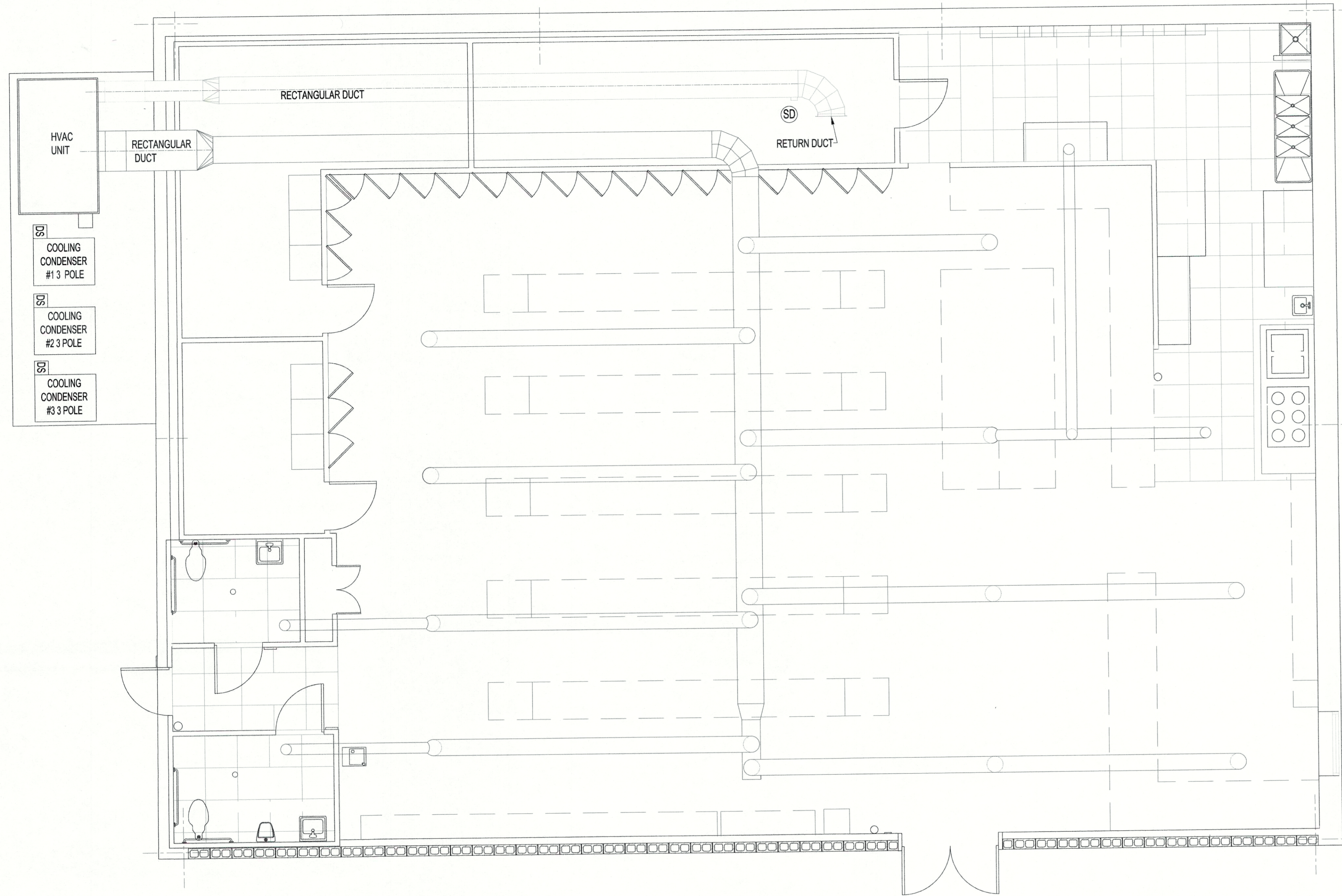
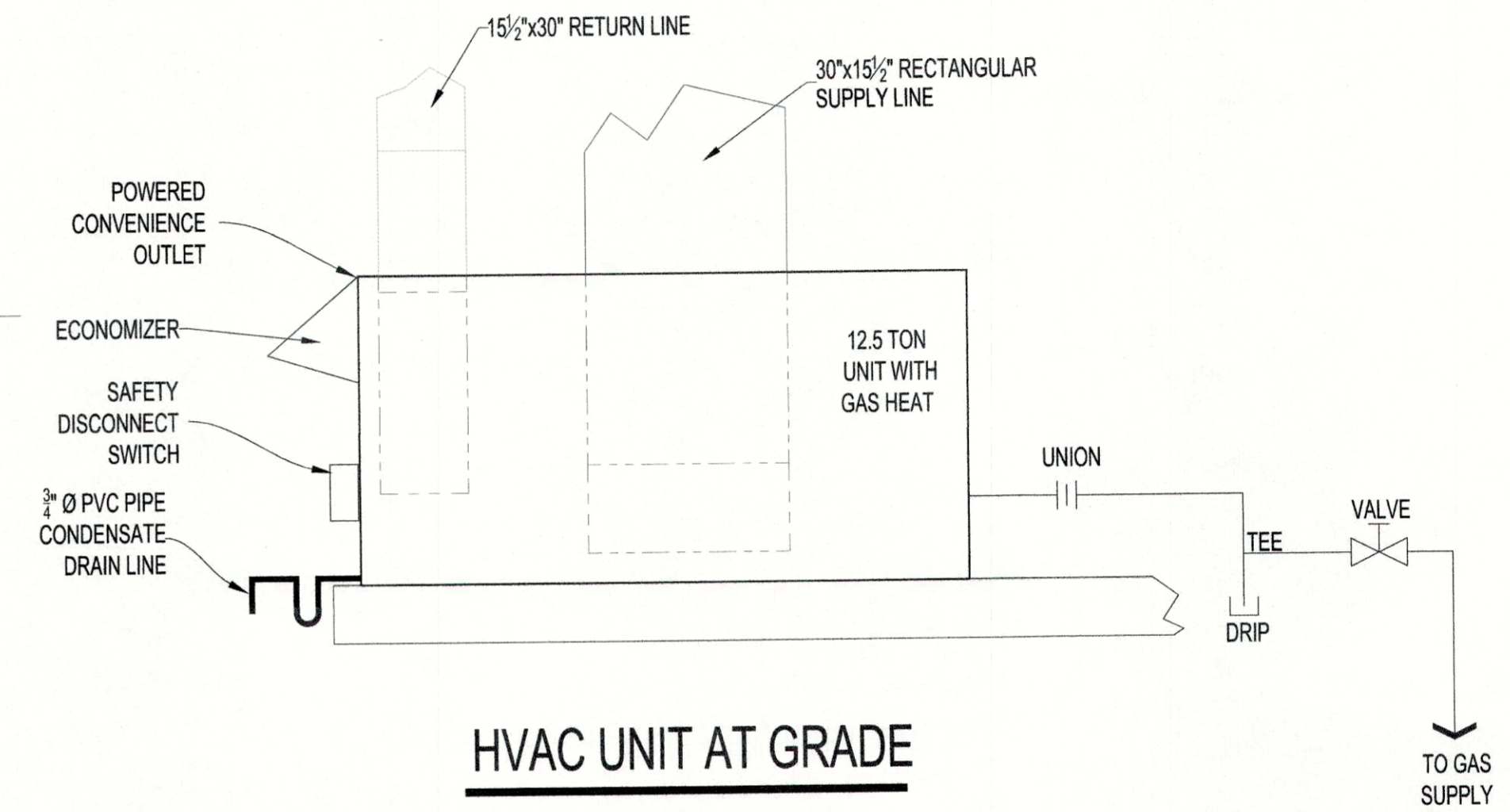


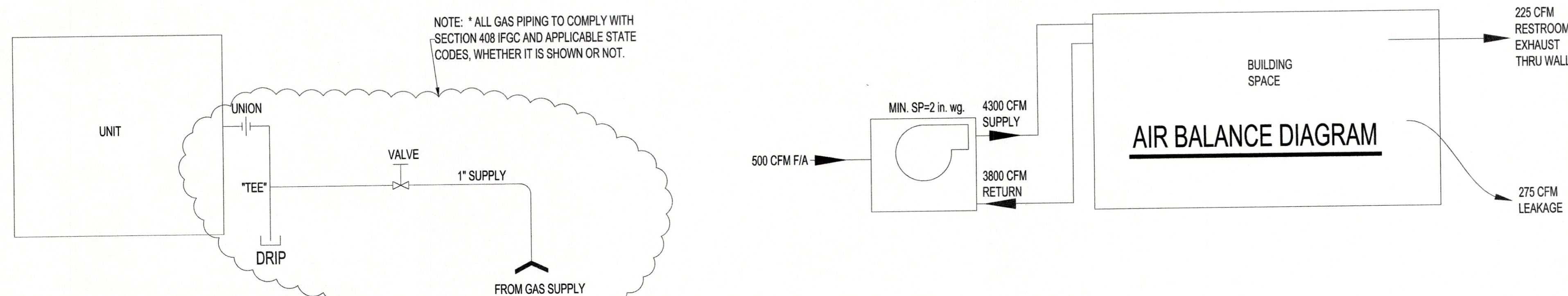
HVAC EQUIPMENT SCHEDULE						
MARK	MODEL	DESCRIPTION	VOLTAGE	MCA/MOCP	WEIGHT	GAS INPUT
HVAC UNIT	ALLIED COMMERCIAL KGA150S SERIES	12.5 TON PACKAGED GAS/ELECTRIC GRADE UNIT, MANUAL O/A PROGRAMABLE THERMOSTAT AND REMOTE SENSOR	208/230 V	67/80 A	1223 lbs	240,000 BTUH



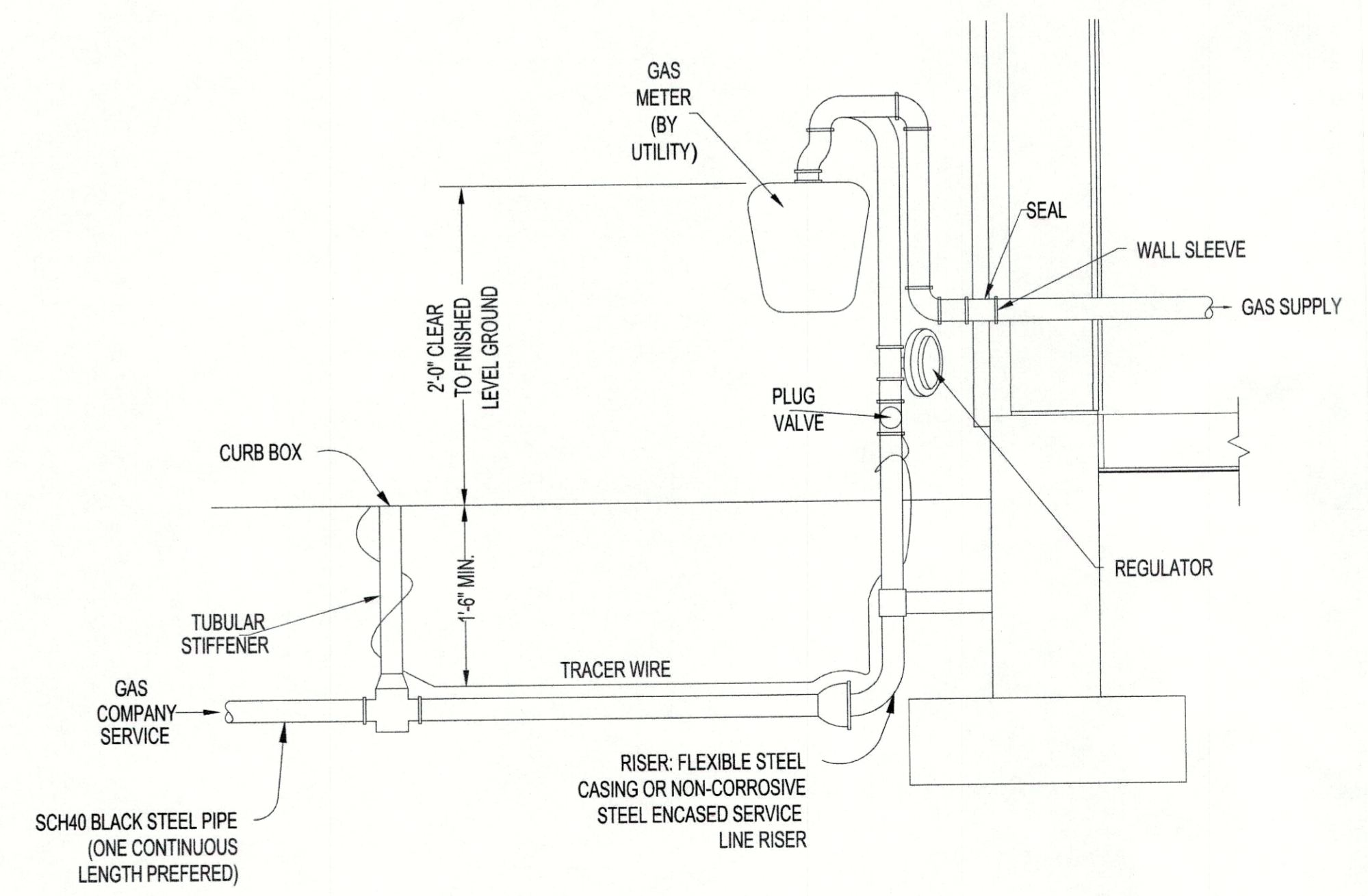
**HVAC DUCT SUPPORT**



**HVAC UNIT AT GRADE**



**UNIT / GAS CONNECTION**



**DIRECT BURIAL SERVICE LINE**

1008 14