

OHIO VALLEY EDUCATIONAL COOPERATIVE (OVEC)

RENOVATIONS TO ST. IGNATIUS / ST. VINCENT DE PAUL FOR
OVEC HEAD START PROGRAM

1816 RANGELAND RD, OKOLONA, KY

ska# 2019-52.01

ARCHITECT:

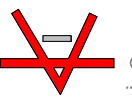
studio **kremer**architects
1231 S Shelby St
Louisville, KY 40203
502.499.1100
contact: Sarah Dalga

OWNER:

Ohio Valley Educational Cooperative
100 Alpine Road
Shelbyville, Kentucky 40065
contact: Mark Elmore and Kim Fithian

LIST OF DRAWINGS:

COVER SHEET	
IGNATIUS - 0	GENERAL NOTES
IGNATIUS - 1	ENTRY SEQUENCE - DEMOLITION
IGNATIUS - 2	ENTRY SEQUENCE - PLAN - NEW WORK
IGNATIUS - 3	ENTRY SEQUENCE - ELEVATIONS - NEW WORK
IGNATIUS - 4	CLASSROOMS 4 AND 5
IGNATIUS - 5	CLASSROOM 6 AND RESTROOMS



studio **kremer**architects
1231 S Shelby St, Louisville, KY 40203
502.499.1100 Fax 502.499.1100

OHIO VALLEY EDUCATIONAL COOPERATIVE (OVEC)
RENOVATIONS TO ST. IGNATIUS / ST. VINCENT DE
PAUL FOR OVEC HEAD START PROGRAM
1816 RANGELAND RD, OKOLONA, KY

COVER SHEET

title / description:

project no.: 2019-52.01

date: 12/18/19

sheet no.: **CVR**

SPECIFICATIONS:

1.

STOREFRONT ENTRANCE SYSTEM:

1.01

MANUFACTURERS:

A. THE DESIGN IS BASED ON PRODUCTS FABRICATED BY:

OLDCASTLE, OR COMPARABLE PRODUCTS BY ONE OF THE FOLLOWING:

1. TUBELITE INC.

2. KAWNEER

3. EFCO CORPORATION

4. VISTAWALL ARCHITECTURAL PRODUCTS

1.02

SYSTEM DESCRIPTION:

A. PREFINISHED ALUMINUM W/ 2" SIGHTLINE, 4.5" DEEP, OR EQUAL

B. MANUFACTURER'S CLEAR ANNODIZED FINISH

C. INFILL GLAZING TO BE 1" INSULATED GLAZING. REFER TO DRAWINGS FOR LOCATIONS WHERE GLAZING IS REQUIRED TO BE FULLY TEMPERED.

2.

COVERED WALKWAY:

2.01

MANUFACTURERS

A. THE DESIGN IS BASED ON PRODUCTS FABRICATED BY:

SUPERIOR MASON PRODUCTS, OR COMPARABLE PRODUCTS BY ONE OF THE FOLLOWING:

1. MAPES ARCHITECTURAL CANOPIES

2. DITTMER ARCHITECTURAL ALUMINUM

3. TENNESSEE VALLEY ALUMINUM

4. PERFECTION ARCHITECTURAL

5. PEACHTREE PROTECTIVE COVERS

6. SUBSTITUTIONS: COMPARABLE PRODUCTS OF OTHER MANUFACTURERS WILL BE CONSIDERED UNDER STANDARD SUBSTITUTION PROCEDURES.

2.02

SYSTEM DESCRIPTION

A. ALL WELDED PREFINISHED EXTRUDED ALUMINUM SYSTEM WITH INTERNAL DRAINAGE

B. MANUFACTURER'S CLEAR ANNODIZED FINISH

C. FOOTINGS: STRUCTURAL CRITERIA TO BE MET AS DETERMINED BY MANUFACTURER'S DESIGN ENGINEER. CONDITIONS ARE SHOWN ON DRAWINGS TO ILLUSTRATE DESIGN INTENT:

1. 2'X2' X 3' DEEP CAST-IN-PLACE CONCRETE FOOTINGS AT ALL POST LOCATIONS INDICATED ON DRAWINGS.

2.03

SUPPLIER TO SUBMIT DESIGN DATA BEARING THE SEAL OF A REGISTERED PROFESSIONAL ENGINEER, LICENSED IN THE STATE WHERE THE PROJECT IS LOCATED. DESIGN CALCULATIONS SHALL STATE THAT THE WALKWAY COVER SYSTEM DESIGN COMPLIES WITH THE WIND REQUIREMENTS OF ASCE 7, THE STABILITY CRITERIA OF APPLICABLE BUILDING CODES, AND ALL OTHER GOVERNING CRITERIA.

3.

TOILET COMPARTMENTS:

3.01

MANUFACTURERS:

A. THE DESIGN IS BASED ON PRODUCTS FABRICATED BY:

BOBRICK SIERRA SERIES, OR COMPARABLE PRODUCTS BY ONE OF THE FOLLOWING:

1. ULTIMATE CORIAN SYSTEM BY SHOWER SHAPES

2. WILSONART GIBRALTAR MATERIAL

3. WILSONART EARTHSTONE MATERIAL

3.02

SYSTEM DESCRIPTION:

A. SOLID COLOR REINFORCED COMPOSITE (SCRC) SUBSTRATE TOILET PARTITIONS AND URINAL SCREENS

B. CONFIGURATION: OVERHEAD BRACED PARTITIONS; SATIN FINISH, EXTRUDED ANODIZED ALUMINUM HEADRAILS

C. FINISH TO BE SELECTED BY OWNER FROM MANUFACTURER'S STANDARD RANGE

4.

PLUMBING FIXTURES (WATER CLOSETS):

4.01

ACCEPTABLE MANUFACTURERS

1. AMERICAN STANDARD

2. KOHLER CO.

3. SLOAN VALVE COMPANY

4. ZURN INDUSTRIES, LLC

4.02

SYSTEM DESCRIPTION

A. FLOOR MOUNTED, BOTTOM OUTLET

B. COLOR: WHITE

C. SEAT HEIGHT: AS INDICATED ON DRAWINGS

5.

PLUMBING FIXTURES (URINALS):

5.01

ACCEPTABLE MANUFACTURERS

1. AMERICAN STANDARD

2. KOHLER CO.

3. SLOAN VALVE COMPANY

4. ZURN INDUSTRIES, LLC

5.02

SYSTEM DESCRIPTION

A. WALL HUNG, BACK OUTLET, ACCESSIBLE

B. COLOR: WHITE

C. RIM HEIGHT: AS INDICATED ON DRAWINGS

6.

PLUMBING FIXTURES (LAVATORIES):

5.01

ACCEPTABLE MANUFACTURERS

1. AMERICAN STANDARD

2. KOHLER CO.

3. SLOAN VALVE COMPANY

4. ZURN INDUSTRIES, LLC

5.02

SYSTEM DESCRIPTION

A. VITREOUS CHINA, WALL MOUNTED, WITH BACK.

B. COLOR: WHITE

C. RIM HEIGHT: AS INDICATED ON DRAWINGS

GENERAL NOTES:

A.

CONTRACTOR TO NOTIFY THE ARCHITECT IMMEDIATELY IN THE EVENT THAT ANY EXISTING CONDITIONS IN THE FIELD DIFFER FROM THOSE DEPICTED IN THESE DOCUMENTS.

B.

ALL WALLS ARE TO REMAIN UNLESS OTHERWISE NOTED.

C.

ALL DIMENSIONS ARE EXISTING AND SHALL BE FIELD VERIFIED.

D.

CONTRACTOR SHALL BE RESPONSIBLE FOR REMOVAL AND DISPOSAL OF ALL EXISTING FINISHES INDICATED TO BE REMOVED AND PREPARATION OF EXISTING SUBSTRATES TO RECEIVE NEW FINISHES PER THE DRAWINGS.

E.

PATCH ALL HOLES, VOIDS, BLEMISHES IN CMU WALLS PRIOR TO NEW PAINT.

F.

ALL A/V DEVICES SUCH AS SPEAKERS, WIRELESS ACCESS DEVICES, PROJECTORS, ETC. ARE TO BE REMOVED BY AN OWNER'S REPRESENTATIVE (NOT IN THIS CONTRACT). COORDINATE TIMING WITH THE OWNER TO PROVIDE AMPLE TIME TO SCHEDULE REMOVAL OF THESE ITEMS TO FIT WITHIN CONSTRUCTION SCHEDULE.

G.

ALL EXISTING TOILET ACCESSORIES SHALL BE REMOVED AND REINSTALLED TO ACCOMMODATE NEW TOILET PARTITIONS.

H.

ALL EXISTING TOILET PARTITION WALLS SHALL BE REMOVED AND NEW PARTITION SYSTEMS OF THE SAME TYPE AND CONFIGURATION AND LAYOUT SHALL BE INSTALLED. COLOR SHSALL BE SELECTED BY THE OWNER PER MANUFACTURER'S STANDARD COLOR OPTIONS.

J.

ALL WALL PAINT TO BE SHERWIN WILLIAMS, COLOR TBD BY OWNER.

K.

NEW CABINETS PROVIDED BY OWNER TO BE INSTALLED BY CONTRACTOR ARE PLASTIC LAMINATE.

L.

DOOR ACCESS CONTROL TO BE COORDINATED WITH OWNER'S SECURITY VENDOR: ALLIANT. PROVIDE ELECTRONIC STRIKE WITH DOOR HARDWARE FOR ACCESS CONTROL AT NEW ENTRANCE DOOR SYSTEM.

studio **kremer** architects
1231 S Shelby St, Louisville, KY 40203
502.499.1100 Fax 502.499.1100

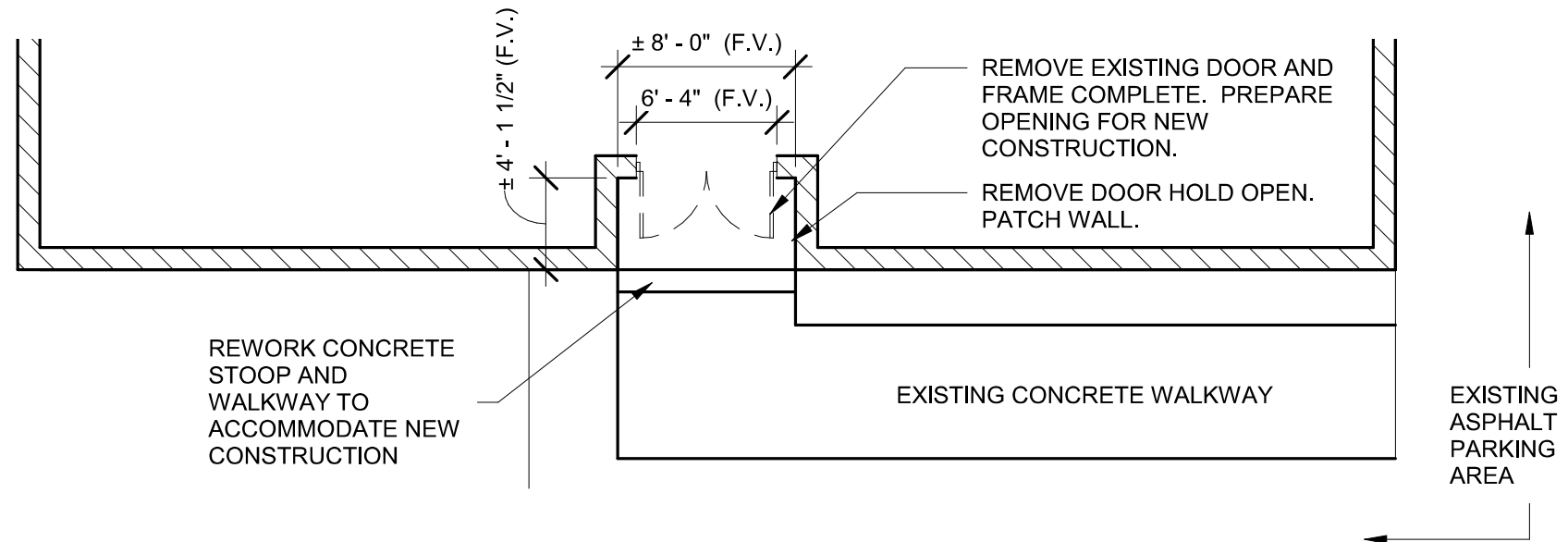
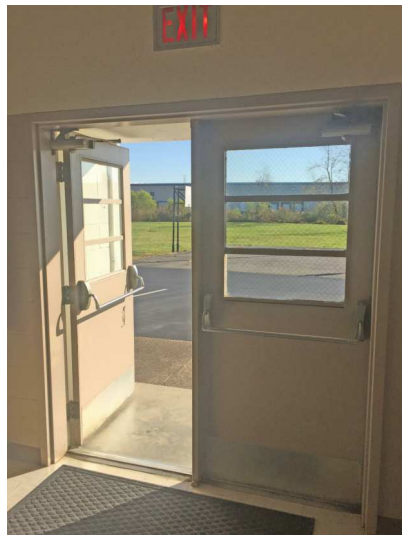
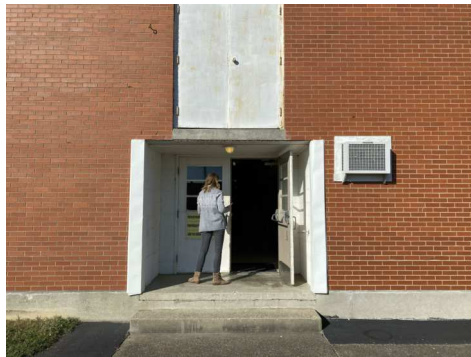
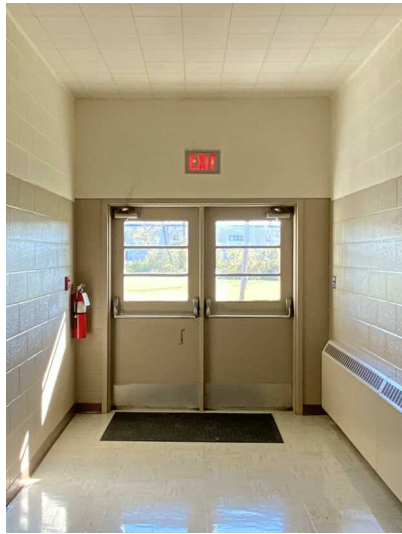
OHIO VALLEY EDUCATIONAL COOPERATIVE (OVEC)
RENOVATIONS TO ST. IGNATIUS / ST.
VINCENT DE PAUL FOR OVEC HEAD
START PROGRAM
1816 RANGELAND RD, OKOLONA, KY

title / description:
CLASSROOM - GENERAL NOTES

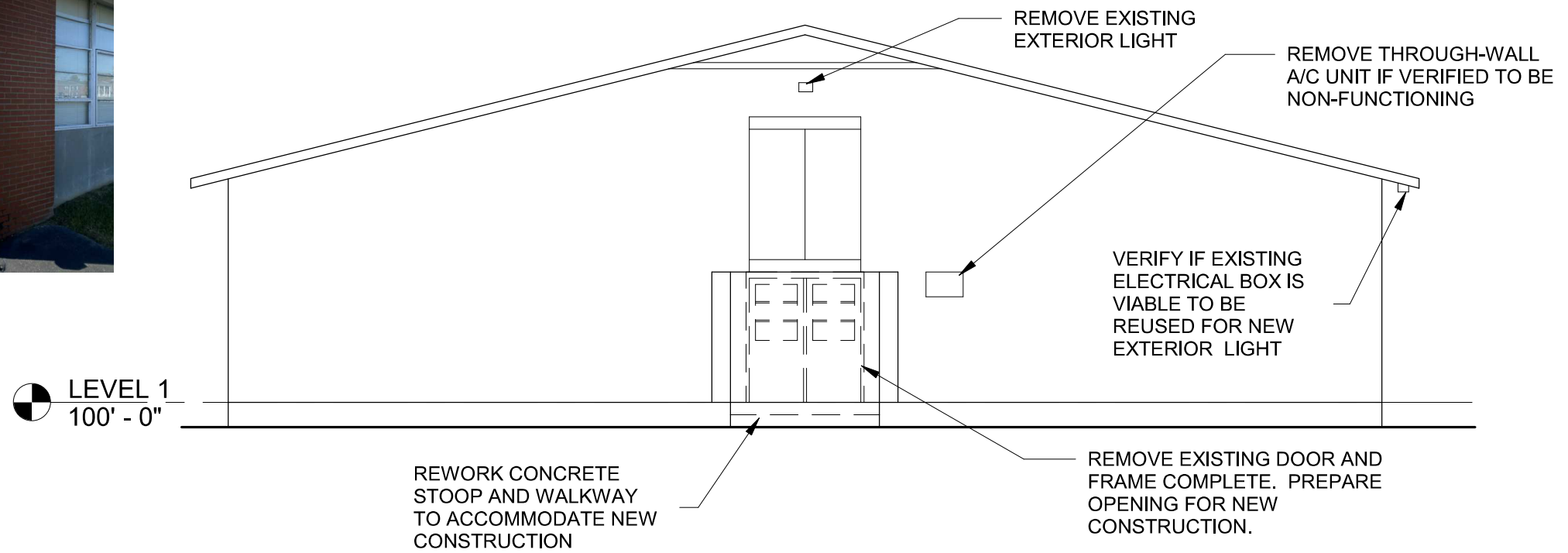
project no.:
2019-52.01

date:
12/18/19

sheet no.:
12/18/19
IGNATIUS - 0



1 ENTRY SEQUENCE - FLOOR PLAN - DEMO
1/8" = 1'-0"



2 ENTRY SEQUENCE - ELEVATION - DEMO
1/8" = 1'-0"



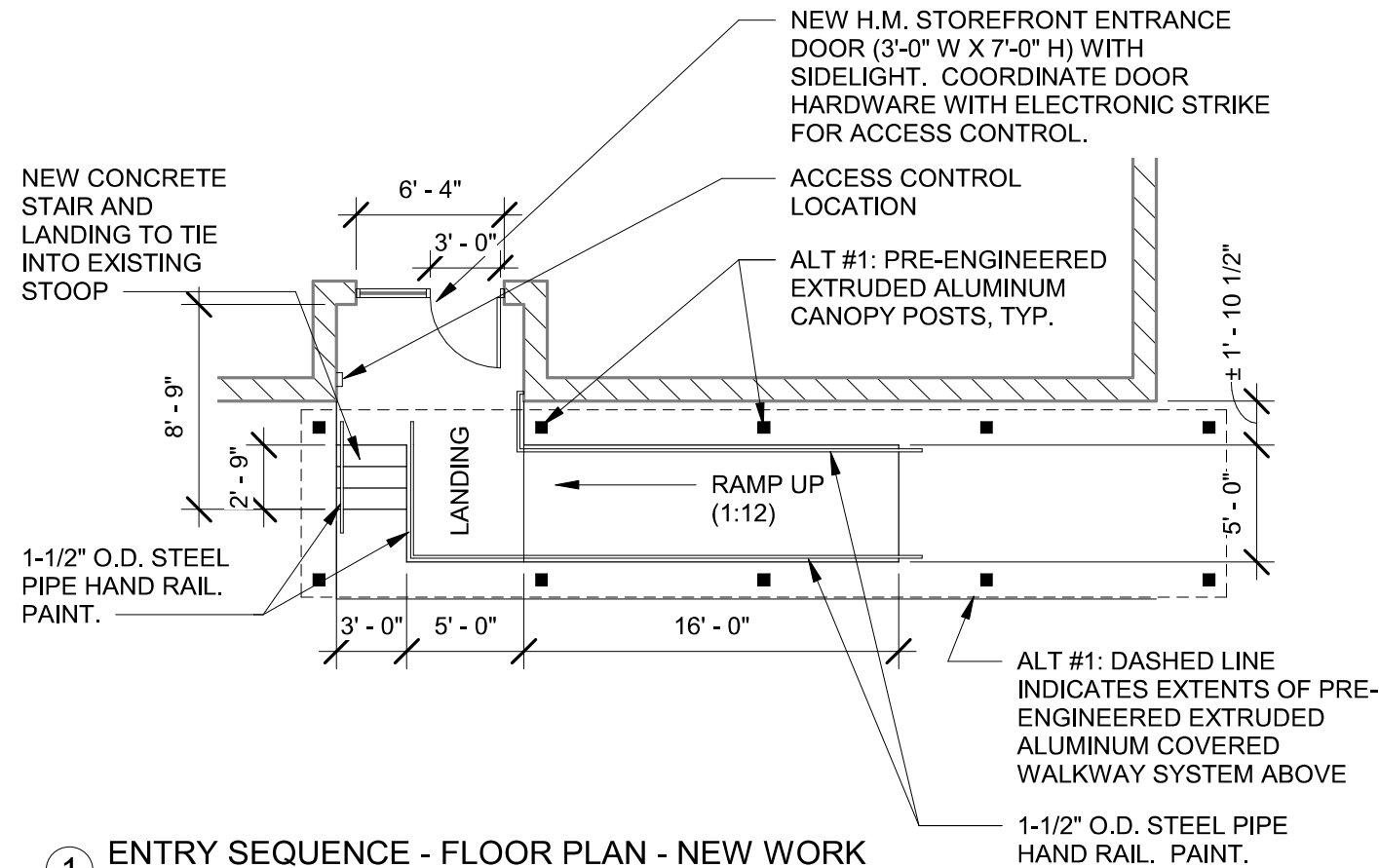
studio **kremer** architects
1231 S Shelby St, Louisville, KY 40203
502.499.1100 FAX 502.499.1100

OHIO VALLEY EDUCATIONAL COOPERATIVE (OVEC)
RENOVATIONS TO ST. IGNATIUS / ST.
VINCENT DE PAUL FOR OVEC HEAD
START PROGRAM
1816 RANGELAND RD, OKOLONA, KY

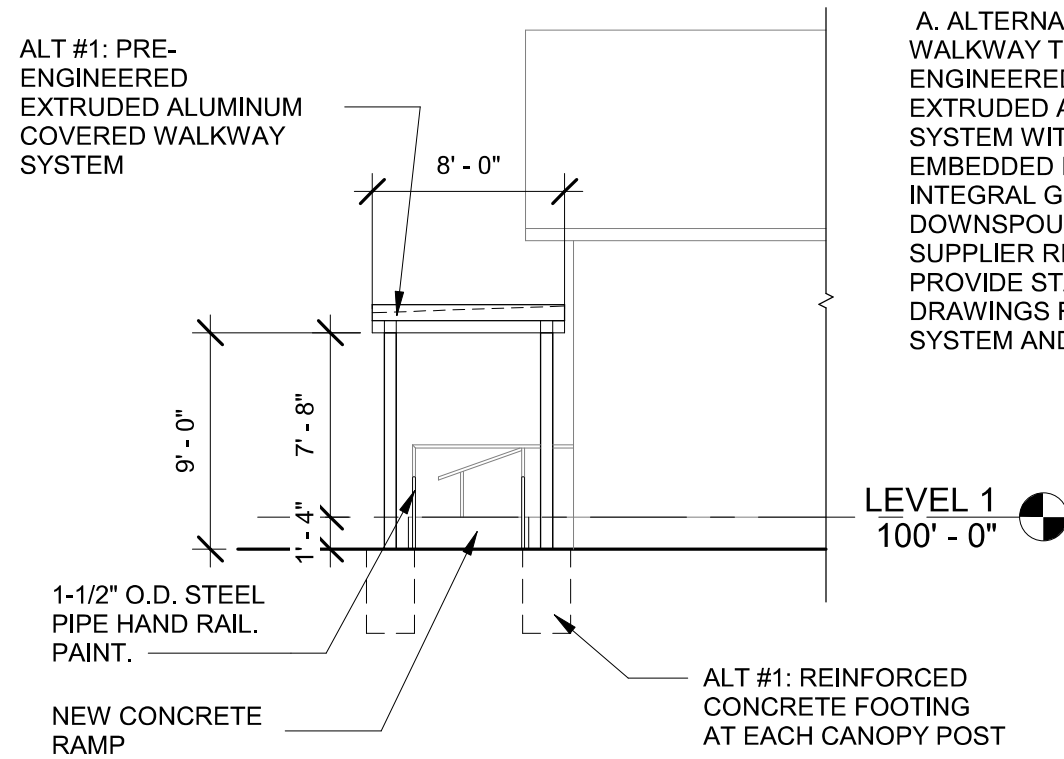
ENTRY SEQUENCE - DEMOLITION

IGNATIUS - 1

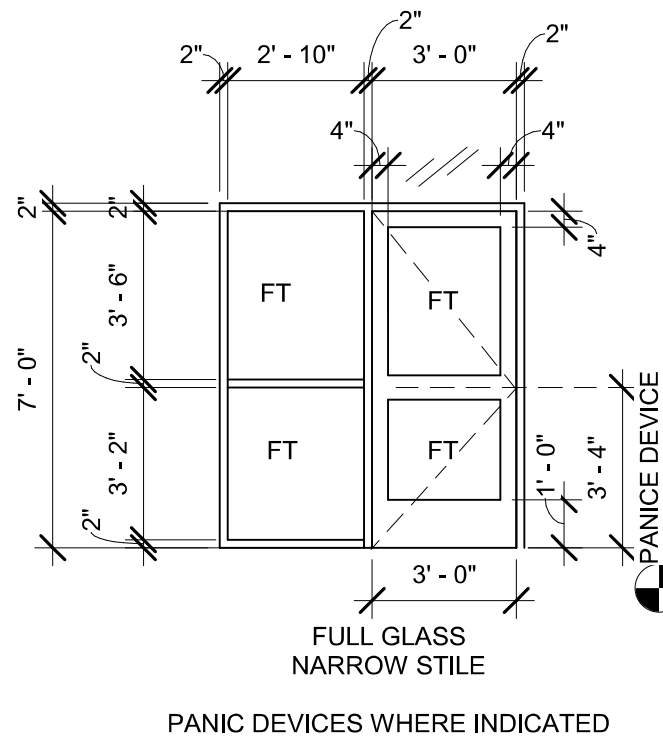
project no.: 2019-52.01
date: 12/18/19



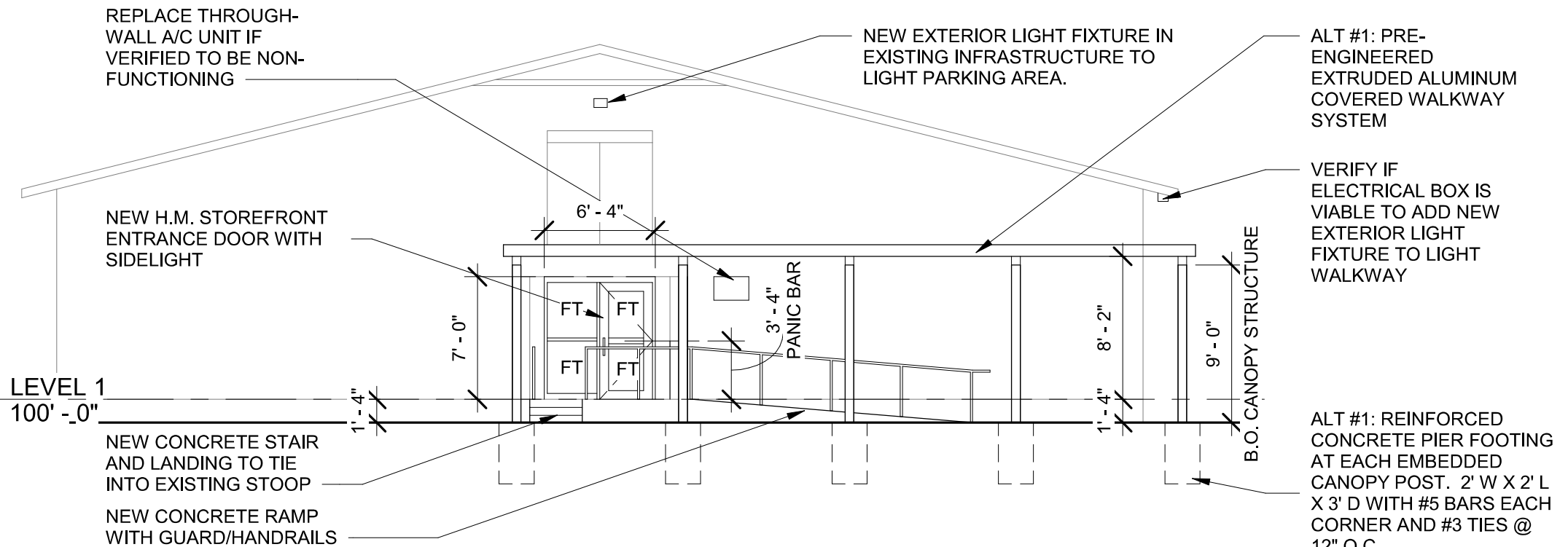
1 ENTRY SEQUENCE - FLOOR PLAN - NEW WORK
1/8" = 1'-0"



2 NORTH ELEVATION - NEW WORK
1/8" = 1'-0"



DOOR AND FRAME ELEVATION
1/4" = 1'-0"



3 EAST ELEVATION - NEW WORK
1/8" = 1'-0"

GENERAL NOTES:

A. ALTERNATE #1: COVERED WALKWAY TO BE PRE-ENGINEERED, PRE-FINISHED EXTRUDED ALUMINUM SYSTEM WITH CONCRETE EMBEDDED POSTS AND INTEGRAL GUTTERS / DOWNSPOUTS. CANOPY SUPPLIER RESPONSIBLE TO PROVIDE STAMPED SHOP DRAWINGS FOR CANOPY SYSTEM AND FOUNDATIONS.



studio **kremer** architects
1231 S Shelby St, Louisville, KY 40203
502.499.1100 FAX 502.499.1100

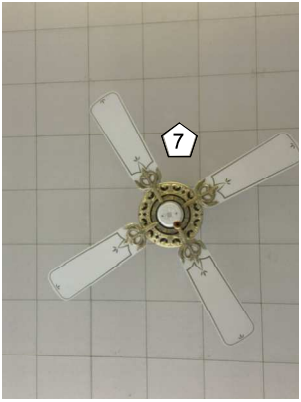
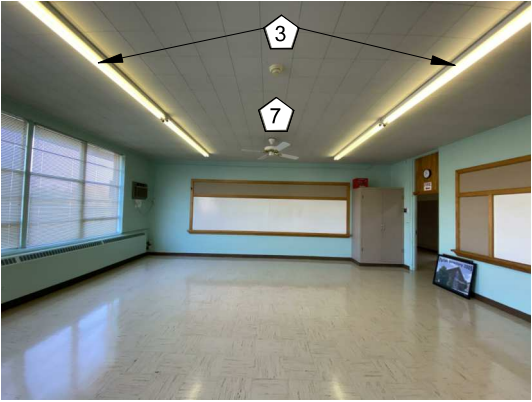
OHIO VALLEY EDUCATIONAL COOPERATIVE (OVEC)
RENOVATIONS TO ST. IGNATIUS / ST.
VINCENT DE PAUL FOR OVEC HEAD
START PROGRAM
1816 RANGELAND RD, OKOLONA, KY

title / description: ENTRY SEQUENCE - NEW WORK

project no.: 2019-52.01
date: 12/18/19

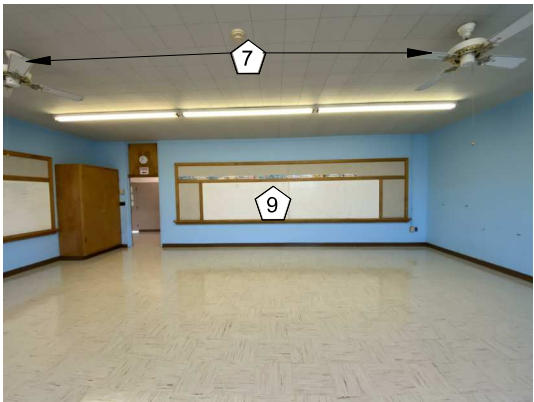
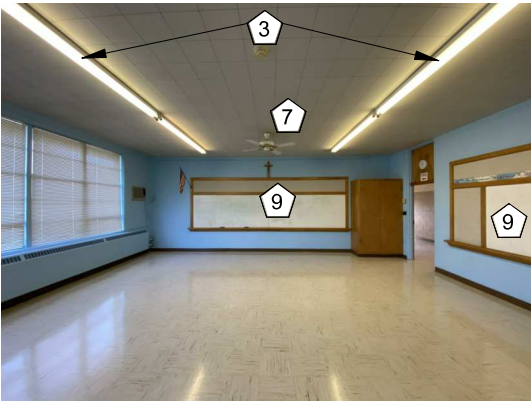
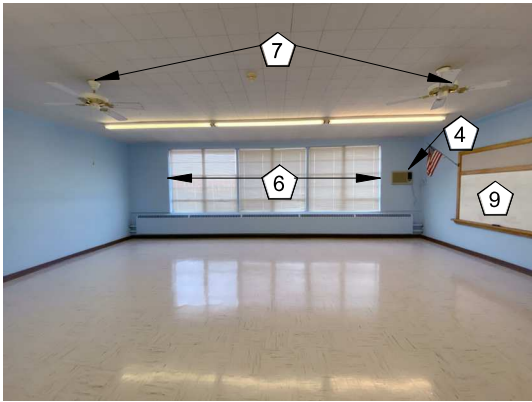
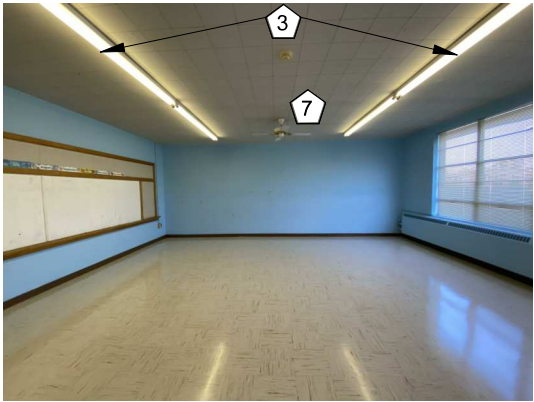
sheet no.: 2

IGNATIUS - 2



CLASSROOM 6:

- 1 2 3 4 5 6 7



CLASSROOM 7:

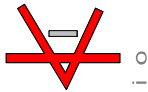
- 1 2 3 4 5 6 7 9

GENERAL NOTES:

- A. TYPICAL CLASSROOM SIZE: ± 30'-0" X 25'-0". FIELD VERIFY.
- B. TYPICAL INTERIOR PARTITIONS ARE 8" CMU. FIELD VERIFY.
- C. TYPICAL WINDOW SIZE AT CLASSROOMS: 21'-0" W X 6'-8" H. FIELD VERIFY.

KEYNOTE LEGEND:

- 1 INSTALL NEW RUBBER FLOOR BASE AT ROOM PERIMETER
- 2 PREP AND PAINT ALL WALLS
- 3 REPLACE EXISTING CEILING LIGHT FIXTURES WITH NEW FIXTURES
- 4 REPLACE THROUGH-WALL A/C UNIT AS REQUIRED. CONTRACTOR TO VERIFY FUNCTIONALITY OF EXISTING UNITS. RESEAL PENETRATIONS AS NECESSARY TO ACCOMMODATE NEW UNITS.
- 5 REMOVE EXISTING SHelf AND COAT HOOK ASSEMBLY. PATCH HOLES TO PREP FOR PAINT.
- 6 INSTALL NEW BLINDS AT ALL WINDOW LOCATIONS. REMOVE EXISTING BLINDS WHERE APPLICABLE.
- 7 REMOVE EXISTING CEILING FANS AND REPLACE WITH NEW UPDATED FIXTURE.
- 8 INSTALL NEW PLASTIC LAMINATE WALL CABINETS AT LOCATION DEFINED BY OWNER.
- 9 REMOVE MARKER BOARD SURFACE WITHIN EXISTING WOOD FRAME ASSEMBLY WHERE BEYOND REPAIR. INSTALL NEW MARKER SURFACE IN EXISTING FRAME.
- 10 REMOVE FILM AT APPLICABLE SECTIONS OF WINDOWS COMPLETE. CLEAN SURFACES.
- 11 CLEAN AND BUFF EXPOSED CONCRETE FLOOR.
- 12 VERIFY ELECTRICAL CIRCUITING CAN ACCOMMODATE MINIMUM (2) MICROWAVES. UPDATE WIRING IF NEEDED TO ACCOMMODATE NEW APPLIANCES.
- 13 LOWER EXISTING URINAL TO CHILD HEIGHT. RIM HEIGHT TO BE 12" A.F.F.
- 14 REMOVE EXISTING WATER CLOSET AND REPLACE WITH NEW WATER CLOSET MOUNTED AT CHILD HEIGHT (TOILET SEAT HEIGHT TO BE 12" A.F.F.)
- 15 LOWER SINK TO CHILD HEIGHT (RIM HEIGHT TO BE 20" - 24" A.F.F.) LOWER ANY MIRROR ASSOCIATED WITH SINK TO 6" ABOVE TOP OF SINK UNIT.
- 16 REMOVE EXISTING TOILET PARTITIONS. REPLACE WITH NEW TOILET PARTITIONS TO MATCH EXISTING LAYOUT



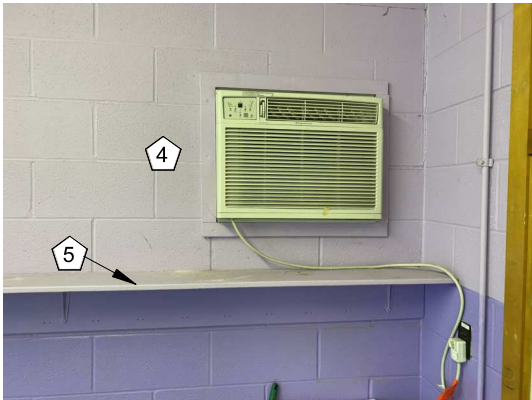
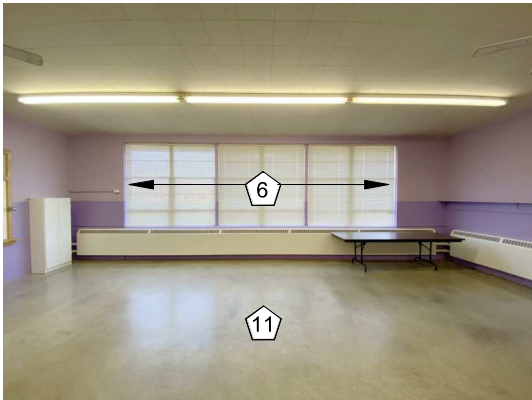
studio kremer architects
1231 S Shelby St, Louisville, KY 40203
502.499.1100 FAX 502.499.1100

OHIO VALLEY EDUCATIONAL COOPERATIVE (OVEC)
RENOVATIONS TO ST. IGNATIUS / ST.
VINCENT DE PAUL FOR OVEC HEAD
START PROGRAM
1816 RANGELAND RD, OKOLONA, KY

title / description: CLASSROOMS 6 AND 7

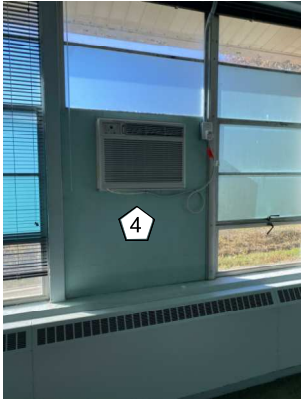
project no.: 2019-52.01
date: 12/18/19

sheet no.: 1
IGNATIUS - 3



OFFICE (ROOM 8):

- 1 2 3 4 5 6 7 8 12



CLASSROOM 10:

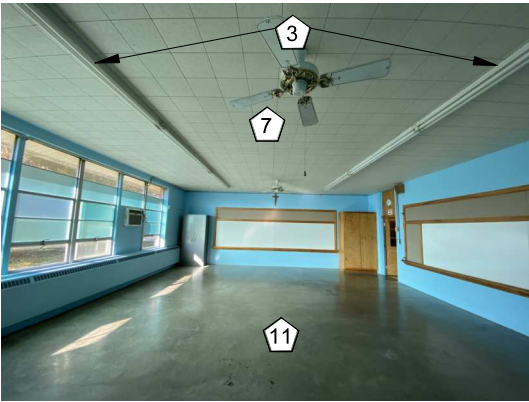
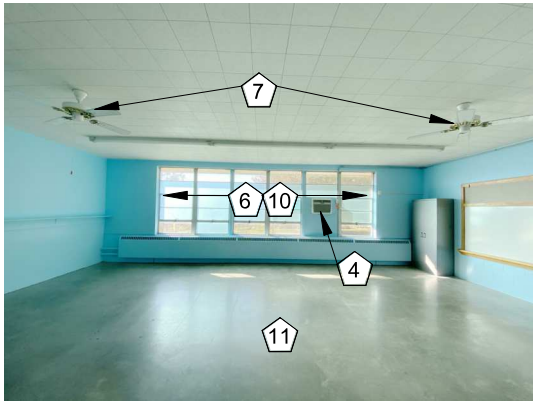
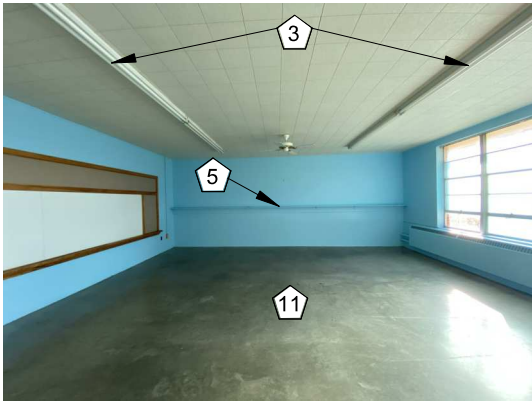
- 1 2 3 4 5 6 7 10 11

GENERAL NOTES:

- A. TYPICAL CLASSROOM SIZE: \pm 30'-0" X 25'-0". FIELD VERIFY.
- B. TYPICAL INTERIOR PARTITIONS ARE 8" CMU. FIELD VERIFY.
- C. TYPICAL WINDOW SIZE AT CLASSROOMS: 21'-0" W X 6'-8" H. FIELD VERIFY.

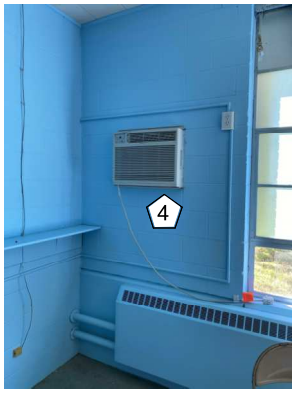
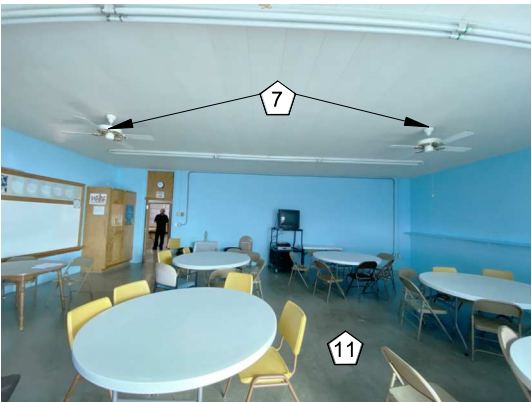
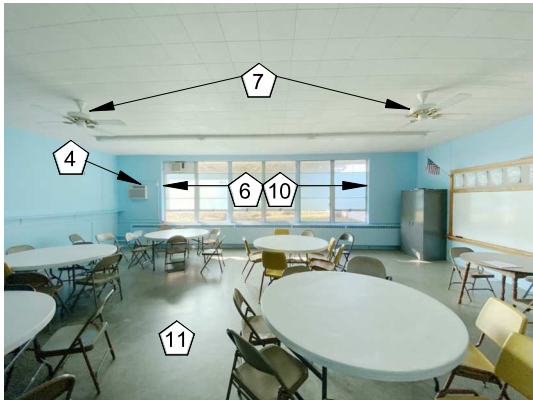
KEYNOTE LEGEND:

- 1 INSTALL NEW RUBBER FLOOR BASE AT ROOM PERIMETER
- 2 PREP AND PAINT ALL WALLS
- 3 REPLACE EXISTING CEILING LIGHT FIXTURES WITH NEW FIXTURES
- 4 REPLACE THROUGH-WALL A/C UNIT AS REQUIRED. CONTRACTOR TO VERIFY FUNCTIONALITY OF EXISTING UNITS. RESEAL PENETRATIONS AS NECESSARY TO ACCOMMODATE NEW UNITS.
- 5 REMOVE EXISTING SHELF AND COAT HOOK ASSEMBLY. PATCH HOLES TO PREP FOR PAINT.
- 6 INSTALL NEW BLINDS AT ALL WINDOW LOCATIONS. REMOVE EXISTING BLINDS WHERE APPLICABLE.
- 7 REMOVE EXISTING CEILING FANS AND REPLACE WITH NEW UPDATED FIXTURE.
- 8 INSTALL NEW PLASTIC LAMINATE WALL CABINETS AT LOCATION DEFINED BY OWNER.
- 9 REMOVE MARKER BOARD SURFACE WITHIN EXISTING WOOD FRAME ASSEMBLY WHERE BEYOND REPAIR. INSTALL NEW MARKER SURFACE IN EXISTING FRAME.
- 10 REMOVE FILM AT APPLICABLE SECTIONS OF WINDOWS COMPLETE. CLEAN SURFACES.
- 11 CLEAN AND BUFF EXPOSED CONCRETE FLOOR.
- 12 VERIFY ELECTRICAL CIRCUITING CAN ACCOMMODATE MINIMUM (2) MICROWAVES. UPDATE WIRING IF NEEDED TO ACCOMMODATE NEW APPLIcANCES.
- 13 LOWER EXISTING URINAL TO CHILD HEIGHT. RIM HEIGHT TO BE 12" A.F.F.
- 14 REMOVE EXISTING WATER CLOSET AND REPLACE WITH NEW WATER CLOSET MOUNTED AT CHILD HEIGHT (TOILET SEAT HEIGHT TO BE 12" A.F.F.)
- 15 LOWER SINK TO CHILD HEIGHT (RIM HEIGHT TO BE 20" - 24" A.F.F.) LOWER ANY MIRROR ASSOCIATED WITH SINK TO 6" ABOVE TOP OF SINK UNIT.
- 16 REMOVE EXISTING TOILET PARTITIONS. REPLACE WITH NEW TOILET PARTITIONS TO MATCH EXISTING LAYOUT



CLASSROOM 11:

- 1 2 3 4 5 6 7 10 11



CLASSROOM 12:

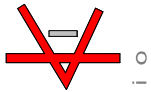
- 1 2 3 4 5 6 7 10 11

GENERAL NOTES:

- A. TYPICAL CLASSROOM SIZE: \pm 30'-0" X 25'-0". FIELD VERIFY.
- B. TYPICAL INTERIOR PARTITIONS ARE 8" CMU. FIELD VERIFY.
- C. TYPICAL WINDOW SIZE AT CLASSROOMS: 21'-0" W X 6'-8" H. FIELD VERIFY.

KEYNOTE LEGEND:

- 1 INSTALL NEW RUBBER FLOOR BASE AT ROOM PERIMETER
- 2 PREP AND PAINT ALL WALLS
- 3 REPLACE EXISTING CEILING LIGHT FIXTURES WITH NEW FIXTURES
- 4 REPLACE THROUGH-WALL A/C UNIT AS REQUIRED. CONTRACTOR TO VERIFY FUNCTIONALITY OF EXISTING UNITS. RESEAL PENETRATIONS AS NECESSARY TO ACCOMMODATE NEW UNITS.
- 5 REMOVE EXISTING SHELF AND COAT HOOK ASSEMBLY. PATCH HOLES TO PREP FOR PAINT.
- 6 INSTALL NEW BLINDS AT ALL WINDOW LOCATIONS. REMOVE EXISTING BLINDS WHERE APPLICABLE.
- 7 REMOVE EXISTING CEILING FANS AND REPLACE WITH NEW UPDATED FIXTURE.
- 8 INSTALL NEW PLASTIC LAMINATE WALL CABINETS AT LOCATION DEFINED BY OWNER.
- 9 REMOVE MARKER BOARD SURFACE WITHIN EXISTING WOOD FRAME ASSEMBLY WHERE BEYOND REPAIR. INSTALL NEW MARKER SURFACE IN EXISTING FRAME.
- 10 REMOVE FILM AT APPLICABLE SECTIONS OF WINDOWS COMPLETE. CLEAN SURFACES.
- 11 CLEAN AND BUFF EXPOSED CONCRETE FLOOR.
- 12 VERIFY ELECTRICAL CIRCUITING CAN ACCOMMODATE MINIMUM (2) MICROWAVES. UPDATE WIRING IF NEEDED TO ACCOMMODATE NEW APPLIANCES.
- 13 LOWER EXISTING URINAL TO CHILD HEIGHT. RIM HEIGHT TO BE 12" A.F.F.
- 14 REMOVE EXISTING WATER CLOSET AND REPLACE WITH NEW WATER CLOSET MOUNTED AT CHILD HEIGHT (TOILET SEAT HEIGHT TO BE 12" A.F.F.)
- 15 LOWER SINK TO CHILD HEIGHT (RIM HEIGHT TO BE 20" - 24" A.F.F.) LOWER ANY MIRROR ASSOCIATED WITH SINK TO 6" ABOVE TOP OF SINK UNIT.
- 16 REMOVE EXISTING TOILET PARTITIONS. REPLACE WITH NEW TOILET PARTITIONS TO MATCH EXISTING LAYOUT



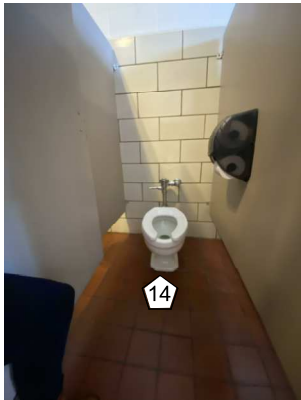
studio **kremer** architects
1231 S Shelby St, Louisville, KY 40203
502.499.1100 FAX 502.499.1100

OHIO VALLEY EDUCATIONAL COOPERATIVE (OVEC)
RENOVATIONS TO ST. IGNATIUS / ST.
VINCENT DE PAUL FOR OVEC HEAD
START PROGRAM
1816 RANGELAND RD, OKOLONA, KY

title / description: **CLASSROOMS 11 AND 12**

project no.: 2019-52.01
date: 12/18/19

sheet no.: **IGNATIUS - 5**



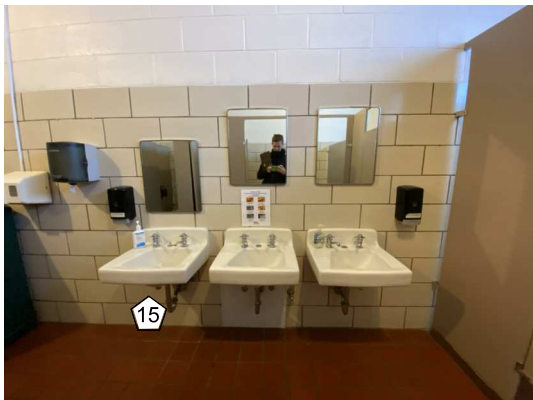
WOMEN'S RESTROOM:

14 15 16



MEN'S RESTROOM:

13 14 15 16



KEYNOTE LEGEND:

- 1 INSTALL NEW RUBBER FLOOR BASE AT ROOM PERIMETER
- 2 PREP AND PAINT ALL WALLS
- 3 REPLACE EXISTING CEILING LIGHT FIXTURES WITH NEW FIXTURES
- 4 REPLACE THROUGH-WALL A/C UNIT AS REQUIRED. CONTRACTOR TO VERIFY FUNCTIONALITY OF EXISTING UNITS. RESEAL PENETRATIONS AS NECESSARY TO ACCOMMODATE NEW UNITS.
- 5 REMOVE EXISTING SHELF AND COAT HOOK ASSEMBLY. PATCH HOLES TO PREP FOR PAINT.
- 6 INSTALL NEW BLINDS AT ALL WINDOW LOCATIONS. REMOVE EXISTING BLINDS WHERE APPLICABLE.
- 7 REMOVE EXISTING CEILING FANS AND REPLACE WITH NEW UPDATED FIXTURE.
- 8 INSTALL NEW PLASTIC LAMINATE WALL CABINETS AT LOCATION DEFINED BY OWNER.
- 9 REMOVE MARKER BOARD SURFACE WITHIN EXISTING WOOD FRAME ASSEMBLY WHERE BEYOND REPAIR. INSTALL NEW MARKER SURFACE IN EXISTING FRAME.
- 10 REMOVE FILM AT APPLICABLE SECTIONS OF WINDOWS COMPLETE. CLEAN SURFACES.
- 11 CLEAN AND BUFF EXPOSED CONCRETE FLOOR.
- 12 VERIFY ELECTRICAL CIRCUITING CAN ACCOMMODATE MINIMUM (2) MICROWAVES. UPDATE WIRING IF NEEDED TO ACCOMMODATE NEW APPLIANCES.
- 13 LOWER EXISTING URINAL TO CHILD HEIGHT. RIM HEIGHT TO BE 12" A.F.F.
- 14 REMOVE EXISTING WATER CLOSET AND REPLACE WITH NEW WATER CLOSET MOUNTED AT CHILD HEIGHT (TOILET SEAT HEIGHT TO BE 12" A.F.F.)
- 15 LOWER SINK TO CHILD HEIGHT (RIM HEIGHT TO BE 20" - 24" A.F.F.) LOWER ANY MIRROR ASSOCIATED WITH SINK TO 6" ABOVE TOP OF SINK UNIT.
- 16 REMOVE EXISTING TOILET PARTITIONS. REPLACE WITH NEW TOILET PARTITIONS TO MATCH EXISTING LAYOUT



studio kremer architects
1231 S Shelby St, Louisville, KY 40203
502.499.1100 FAX 502.499.1100

OHIO VALLEY EDUCATIONAL COOPERATIVE (OVEC)
RENOVATIONS TO ST. IGNATIUS / ST.
VINCENT DE PAUL FOR OVEC HEAD
START PROGRAM
1816 RANGELAND RD, OKOLONA, KY

title / description:
RESTROOMS

project no.: 2019-52.01
date: 12/18/19

sheet no.:
IGNATIUS - 6