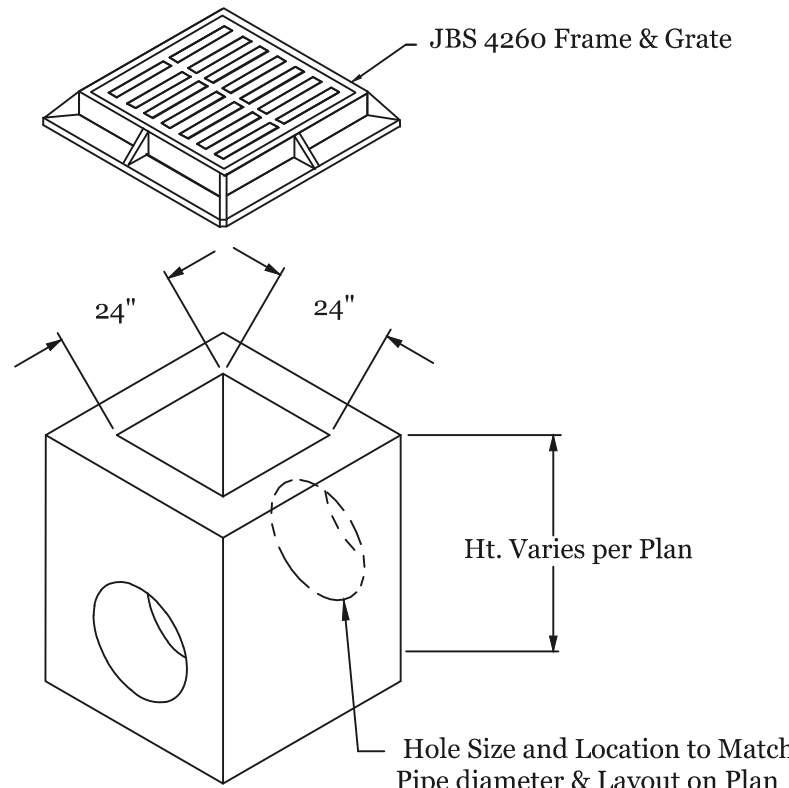


GENERAL NOTES:

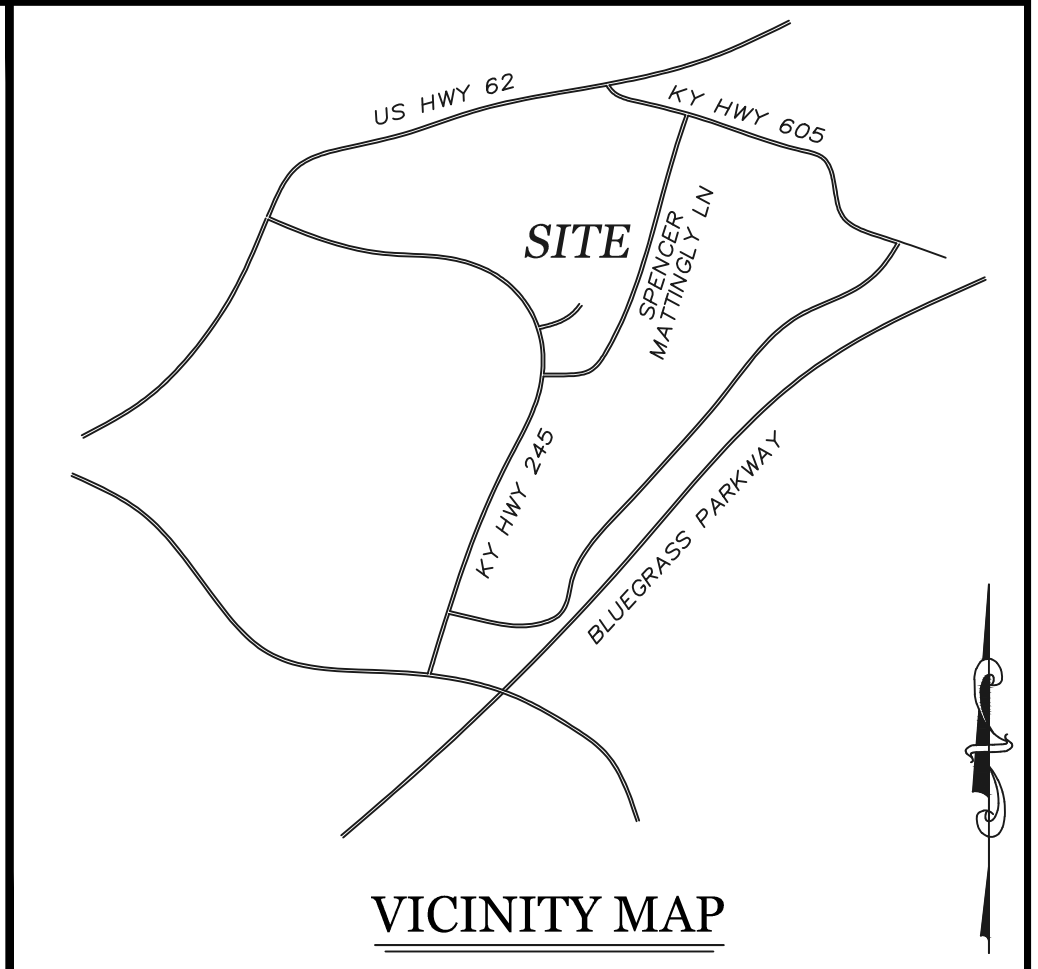
1. STEEL REINFORCEMENT & CONC. STRENGTH PER ASTM C913.

	Grate	I.E.
CB1	717.15'	715.15'
CB2	718.0'	TBD

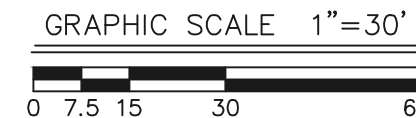


2' x 2' CATCH BASIN (CB1)

NOT TO SCALE



VICINITY MAP



SITE STATISTICS:

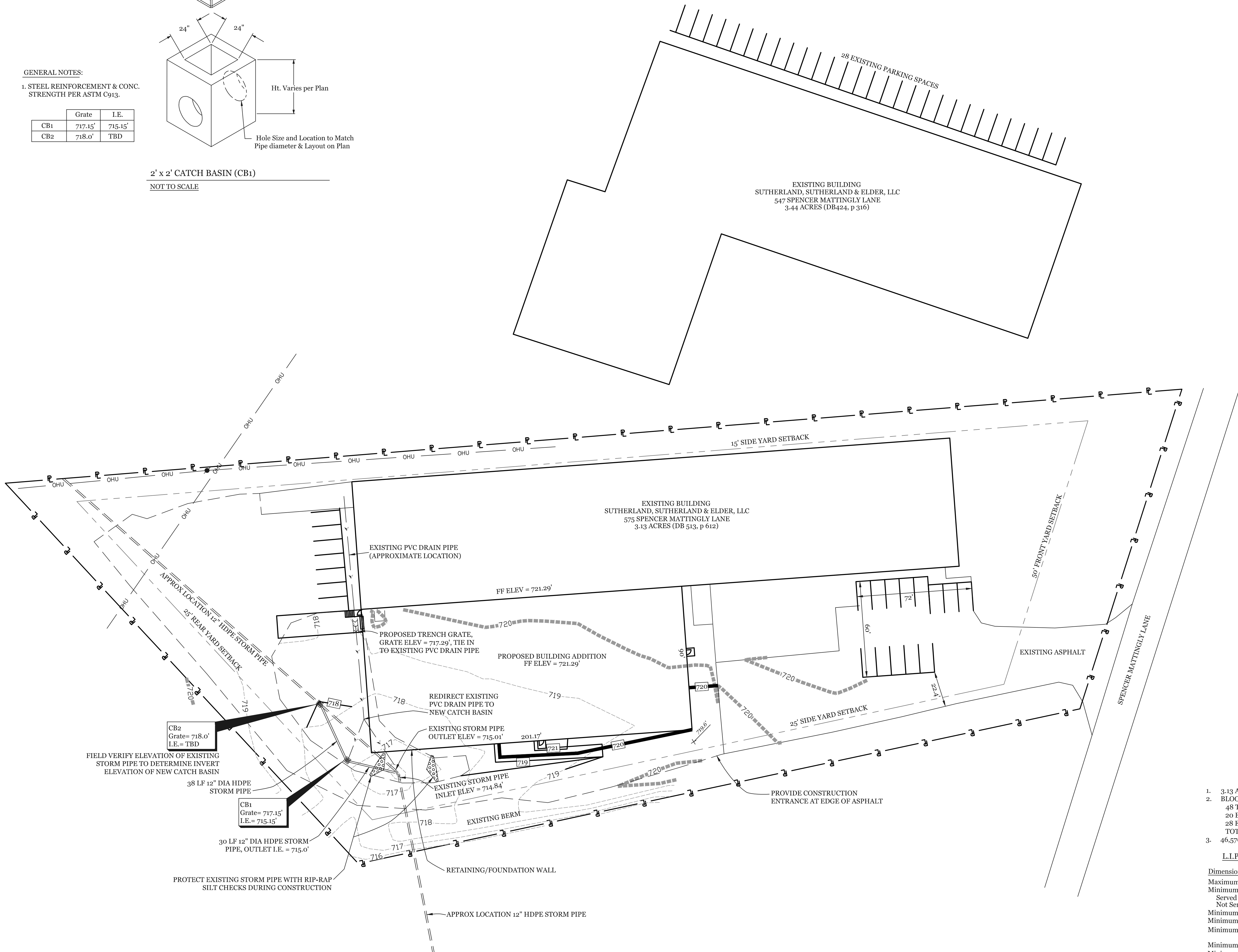
- 3.13 ACRE LOT, ZONED LIP
- BLOOMFIELD FARMS - FOOD MANUFACTURING FACILITY
48 TOTAL EMPLOYEES FOR TWO FACILITIES COMBINED OVER TWO SHIFTS
20 EXISTING PARKING SPACES AT 575 SPENCER MATTINGLY LANE
28 EXISTING PARKING SPACES AT 547 SPENCER MATTINGLY LANE
TOTAL = 48 PARKING SPACES
- 46,570 SQ. FT. ~ 34% GREENSPACE PROVIDED

L.I.P. - LIGHT INDUSTRIAL PARK ZONING

Dimension and Area Requirements

Maximum Height	50 Feet
Minimum Lot Area:	
Served with Sanitary Sewers	5000 Square Feet
Not Served with Sanitary Sewers	43,560 Square Feet
Minimum Lot Width	50 Feet
Minimum Front Yard Setback	50 Feet
Minimum Side Yard Setback	15 Feet (Not Adjoining Residential)
Minimum Rear Yard Setback	25 Feet (Adjoining Residential)
Minimum Open Space Req'd	20%

PROPOSED BUILDING ADDITION: 0.6 ACRES DISTURB LIMITS
NO IMPERVIOUS AREA ADDED



Horizon
ENGINEERING, LLC

Civil Engineering & Land Surveying
111 North Second Street - P.O. Box 364
Bardstown, KY - 40004
Phone: (502) 348-4330

STATE OF KENTUCKY

ROBIN P. MILLS

21248

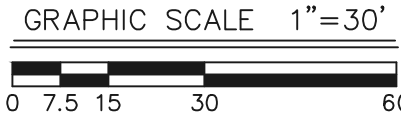
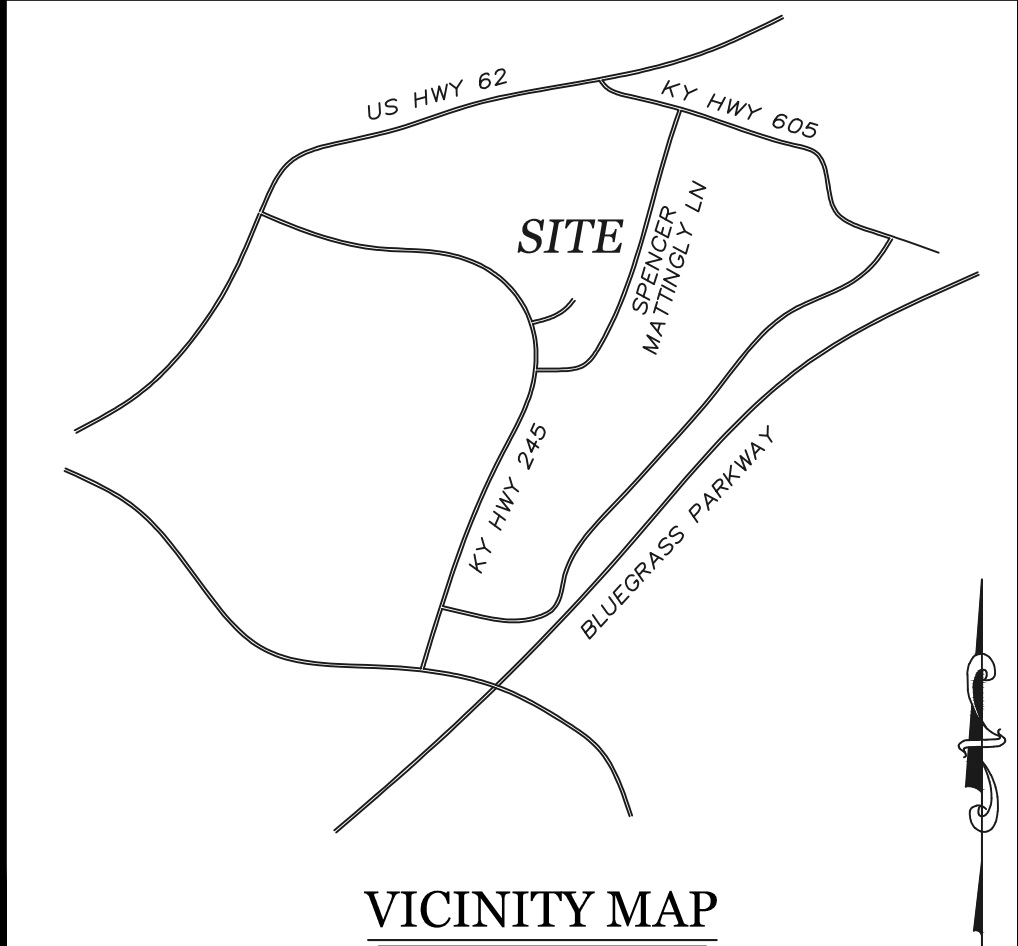
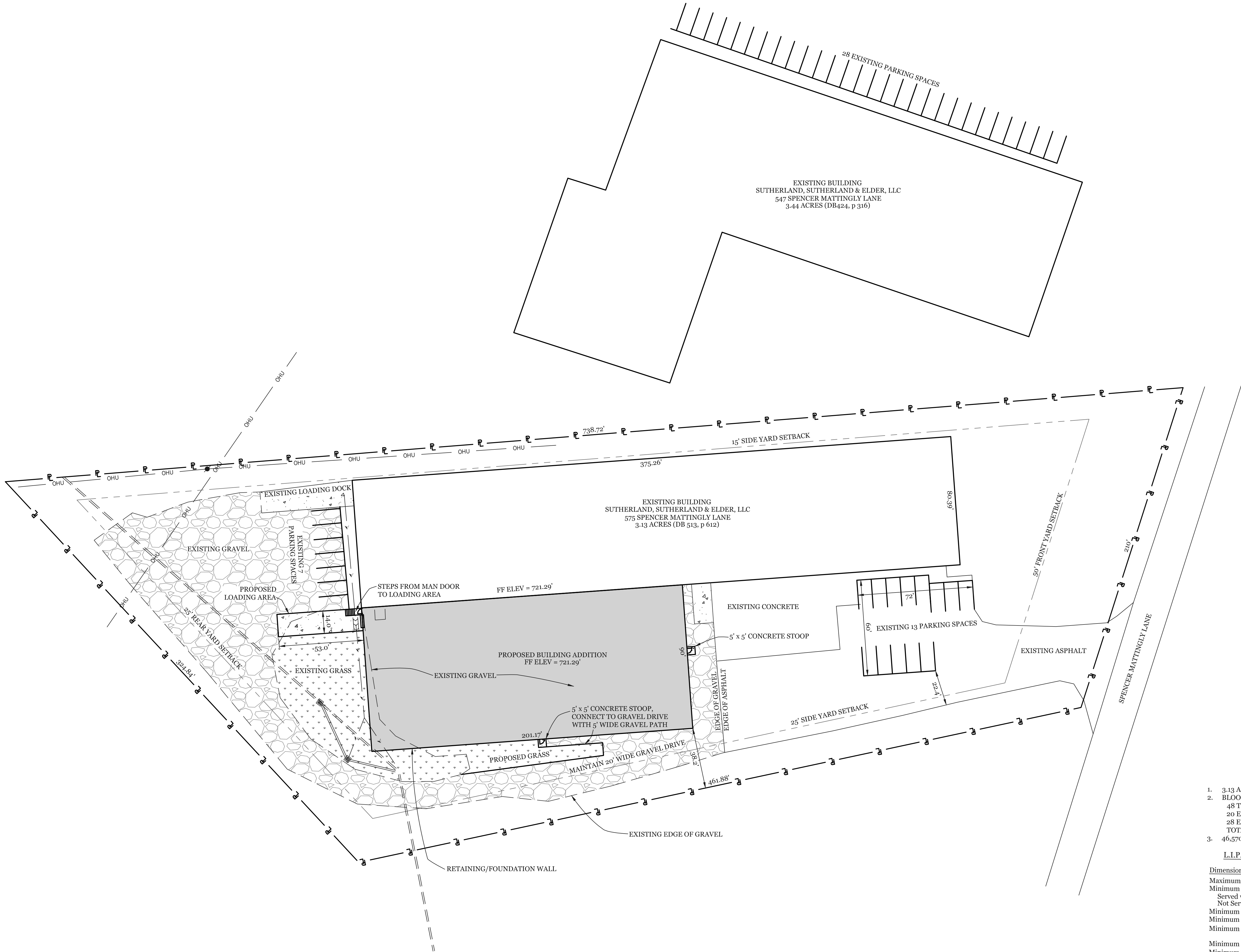
LICENSED PROFESSIONAL ENGINEER

Revisions	By	Date	Description

Data File: Drawing File: H279.dwg Job Number: H3912 Scale: 1\"/>

SITE GRADING & DRAINAGE PLAN
BLOOMFIELD FARMS BUILDING ADDITION
575 SPENCER MATTINGLY LANE
BARDSTOWN, KENTUCKY 40004

BARDSTOWN, NELSON COUNTY, KENTUCKY



SITE STATISTICS:

- 3.13 ACRE LOT, ZONED LIP
- BLOOMFIELD FARMS - FOOD MANUFACTURING FACILITY
48 TOTAL EMPLOYEES FOR TWO FACILITIES COMBINED OVER TWO SHIFTS
20 EXISTING PARKING SPACES AT 575 SPENCER MATTINGLY LANE
28 EXISTING PARKING SPACES AT 547 SPENCER MATTINGLY LANE
TOTAL = 48 PARKING SPACES
- 46,570 SQ. FT. ~ 34% GREENSPACE PROVIDED

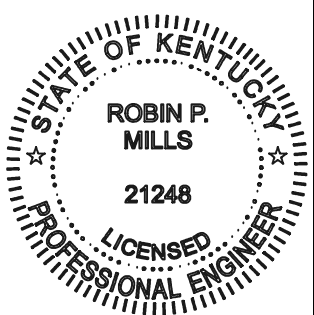
L.I.P. - LIGHT INDUSTRIAL PARK ZONING

Dimension and Area Requirements

Maximum Height	50 Feet
Minimum Lot Area:	
Served with Sanitary Sewers	5000 Square Feet
Not Served with Sanitary Sewers	43,560 Square Feet
Minimum Lot Width	50 Feet
Minimum Front Yard Setback	50 Feet
Minimum Side Yard Setback	15 Feet (Not Adjoining Residential) 25 Feet (Adjoining Residential)
Minimum Rear Yard Setback	25 Feet
Minimum Open Space Req'd	20%

PROPOSED BUILDING ADDITION: 0.6 ACRES DISTURB LIMITS
NO IMPERVIOUS AREA ADDED

Horizon
ENGINEERING, LLC
Civil Engineering & Land Surveying
111 North Second Street - P.O. Box 364
Bardstown, KY - 40004
Phone: (502) 348-4330



REVISIONS	
Date	Description

Data File: Drawing File: H279.dwg Job Number: H3912 Scale: 1" = 30' PVA Number:	Drawn By: RPM Date: 11/19/2020 Sheet: 1 of 3
---	--

SITE LAYOUT
BLOOMFIELD FARMS BUILDING ADDITION
575 SPENCER MATTINGLY LANE
BARDSTOWN, KENTUCKY 40004

BARDSTOWN, NELSON COUNTY, KENTUCKY