

Addendum #1

Pleasure Ridge Park

Issue Date: May 5, 2021

Bid Date: Thursday, May 13, 2021 Time: 3:00 P.M.

This Addendum forms a part of the Contract Documents must be acknowledged of receipt in the space provided on the Bid Form. Failure to do so may subject bidder to disqualification.

This Addendum **does not modify the original bid date or time** and modifies the original Bidding Documents dated April 4, 2021.

This Addendum consists of **3** page(s) and 2 drawings. (M1.02R1, M1.03R1)

CHANGES / CLARIFICATIONS TO BID DOCUMENTATION

1. Bidder to exclude taxes for items that they anticipate owner will issue DPOs for. Owner will issue a master DPO and contractor controls what they turn in for direct purchase.

CHANGES / CLARIFICATIONS TO PLANS & SCHEDULES

1. Add following items to **EQ1.01/Equipment schedule:**

EQUIPMENT SCHEDULE								
ITEM NO.	QTY.	DESCRIPTION	RESPONSABILITY					REMARK
			FURN.BY.	INST. BY.	MC	PC	EC	
28	1	12 inch. Gas Range Backsplash	GC	GC	-	-	-	12 inch. Gas Range Backsplash by GE. Model #UX12B36PSS
29	1	Reversible Grill/Griddle	GC	GC	-	-	-	Reversible Grill/Griddle by GE Model #JXGRILL1

2. **S1.01-** the LVL beams shown on sheet S1.01 are to be MICROLAM 5 1/4" x 14" with required Simpson brackets/seats. Equivalent load PARALAM- TIMBER STRAND or other brands will be accepted.

3. **A1.01-** Sprinkler system is located beside the new gear room- see note 10/A1.01
4. **A3.04** – Room finish schedule, Rooms: 135, 136 and 139 Wall finishes should be Wall #2.
5. **03/A5.04** Joist size 8K 3@ 24 O.C.
6. Other manufacturers for the CO-RAY-VAC Infra –red system in new addition apparatus bay will be accepted if they meet the specifications and standards. **(Tagged notes/M1.02R1)**
7. Reference attached drawing **M1.02R1** for revised ceiling callouts.
8. See revised sheet **M1.03R1** for revised condensate piping routes for VR System.
9. **M1.03R1** Note #3 for VRF DSV Schedule shall read “Provide with plaster frame for installation in GYP or Plaster ceiling coordinate where required with architectural ceiling plans. Provide access door in gypsum ceilings.”
10. Alternative manufacturer lighting schedule will be accepted if it meets the specifications and standards.
11. **E1.01 Lighting Additions/changes.-** Add recessed flange kits for recessed 2x4 LED fixtures in GYP. BD.ceiling rooms: 100,101,102,105,107,108,122,131,132,133,134.
12. **E1.02 Fire Alarm system modifications additions.-**
 - a. Add remote annunciator and associated wiring to system. Locate Annunciator adjacent to door #100.
 - b. Add fire alarm tie in to Range hood fire suppression system.
 - c. Add (7) smoke detectors total in hallways adjacent to Sleeping areas. Space detectors evenly for proper coverage.
 - d. Clarification-The Flow and Tamper switch for the Sprinkler riser is located in the new ambulance bay room # 141.
 - e. Clarification- the Ceiling smoke detectors in the sleeping area shall all have 520 hz sounder bases.
 - f. Clarification- Revise A/V unit locations in Apparatus Bay to meet Fire code proper coverage relative to egress paths.
 - g. Add (2) Fire Alarm A/V units and all associated required wiring. One in Gear room 140 and one in laundry 131.
 - h. Add one duct type smoke detector for AHU-#5 located in the mechanical mezzanine.
 - i. Add Fire alarm connection and wiring for PIV. Coordinate with Fire Suppression provider to verify location.
13. **E1.02**
 - a. Add receptacle under cabinet adjacent to Range to serve hood exhaust system and provide circuit homerun to panel “C” circuit #21 to serve this receptacle.
 - b. Add four above counter receptacles circuited to panel “A” circuit 47 and 49 (two per circuit) at work bench near apparatus bay plan north east bay egress door.
14. **E1.03** – Add 6 spare 20 amp breakers in available space in panel “C”.

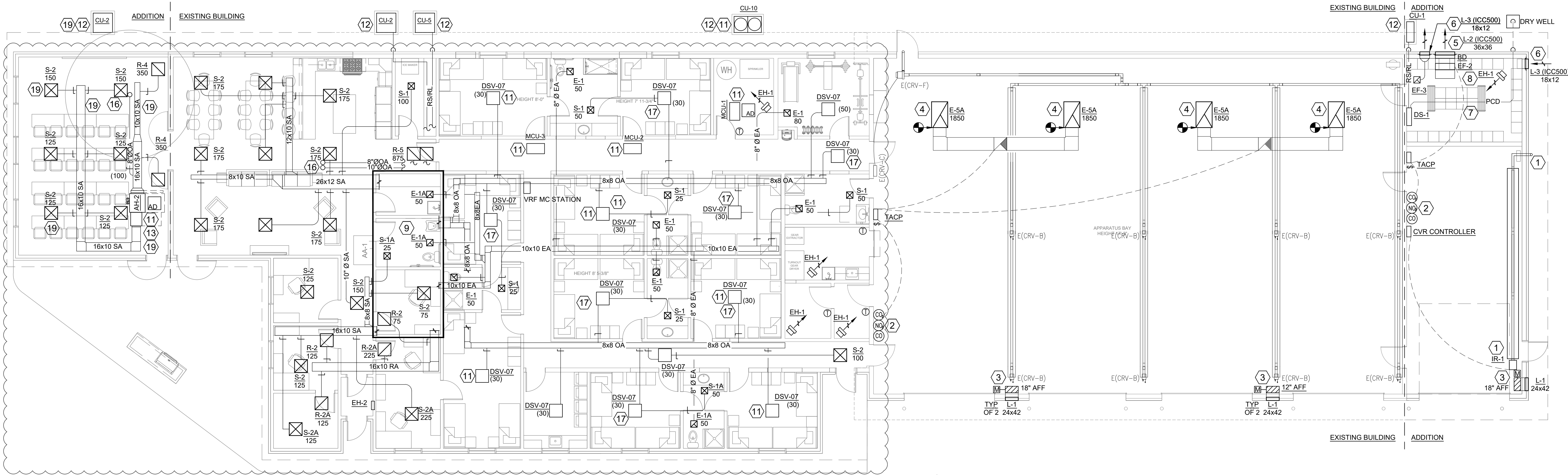
15. Alternative equipment will be approved by **Nixon Powers Services** if it meets the specifications.

CHANGES / CLARIFICATIONS TO SPECIFICATIONS

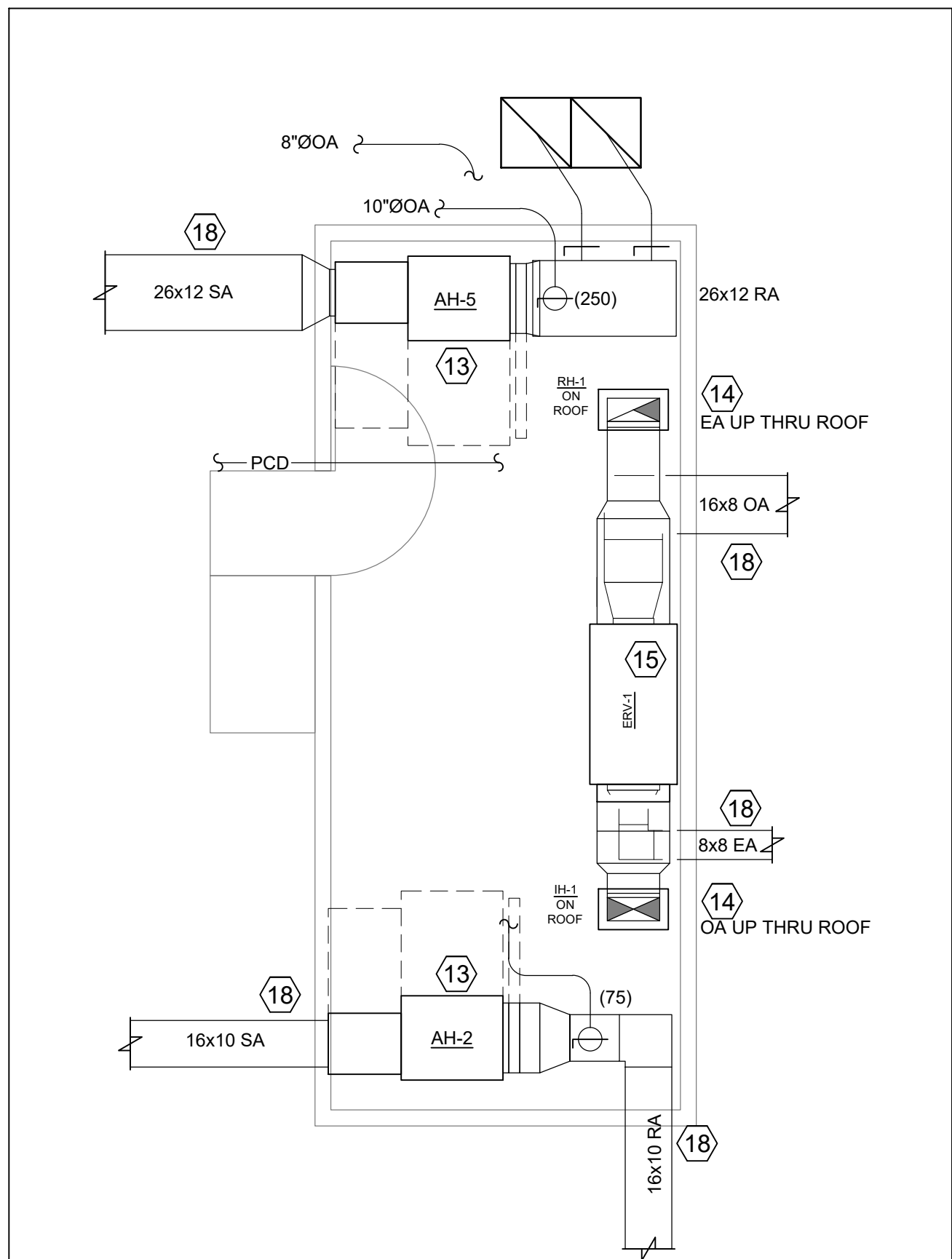
1. Fire Dept. will remove all lockers, furniture and mounted signage that they want to save.
2. Hydrant on Kerrick Lane is a public hydrant.
3. Bidders to include all necessary Taps and service fees for utilities.
4. Water test for the hydrant is not available Bid as if it meets the flow requirements.
5. No LED paint or asbestos is expected but it has not been tested either.
6. All asphalt shingles to be replaced – See specifications
7. Floor finishes – floor tile should be 12"x12" Stone peak or similar quality. Honed Tile & Stone color Bardiglio for Bidding – Final tile & color to be selected by owner.
8. Owner will accept sealed concrete floor only.
9. Trim trees on Kerrick Lane (north) and south side of the building at least 8' above roof line. Remove all trees and shrubs on the limits of the new additions or where necessary (north, west and south side), at least 1' below grade and fill to match adjoining surface. Use sheet C1.0 as North reference for all plans.
10. Furnish and install a new concrete splash blocks for all new or existing downspouts that do not empty onto concrete or paving. Alter downspouts as needed.
11. Cut down existing rain leader system to 12" below grade. Cap and cover with dirt, concrete or asphalt to match adjoining.
12. Provide 4" slabs for Offices and Dorms areas and 6" slab for bays areas.
13. Roof demolition may vary somewhat with the new roof, verify at the job site.
14. All 8" masonry walls to get Core fill 500 insulation.

END OF ADDENDUM #1

I:\2020\20-4017 PRP Station #1 Renovations\Documents\Bid Documents\Addendums\PRP #1 Addendum #1 - 2021-05-05.docx



01 MECHANICAL FLOOR PLAN
SCALE: 1/8" = 1'-0"

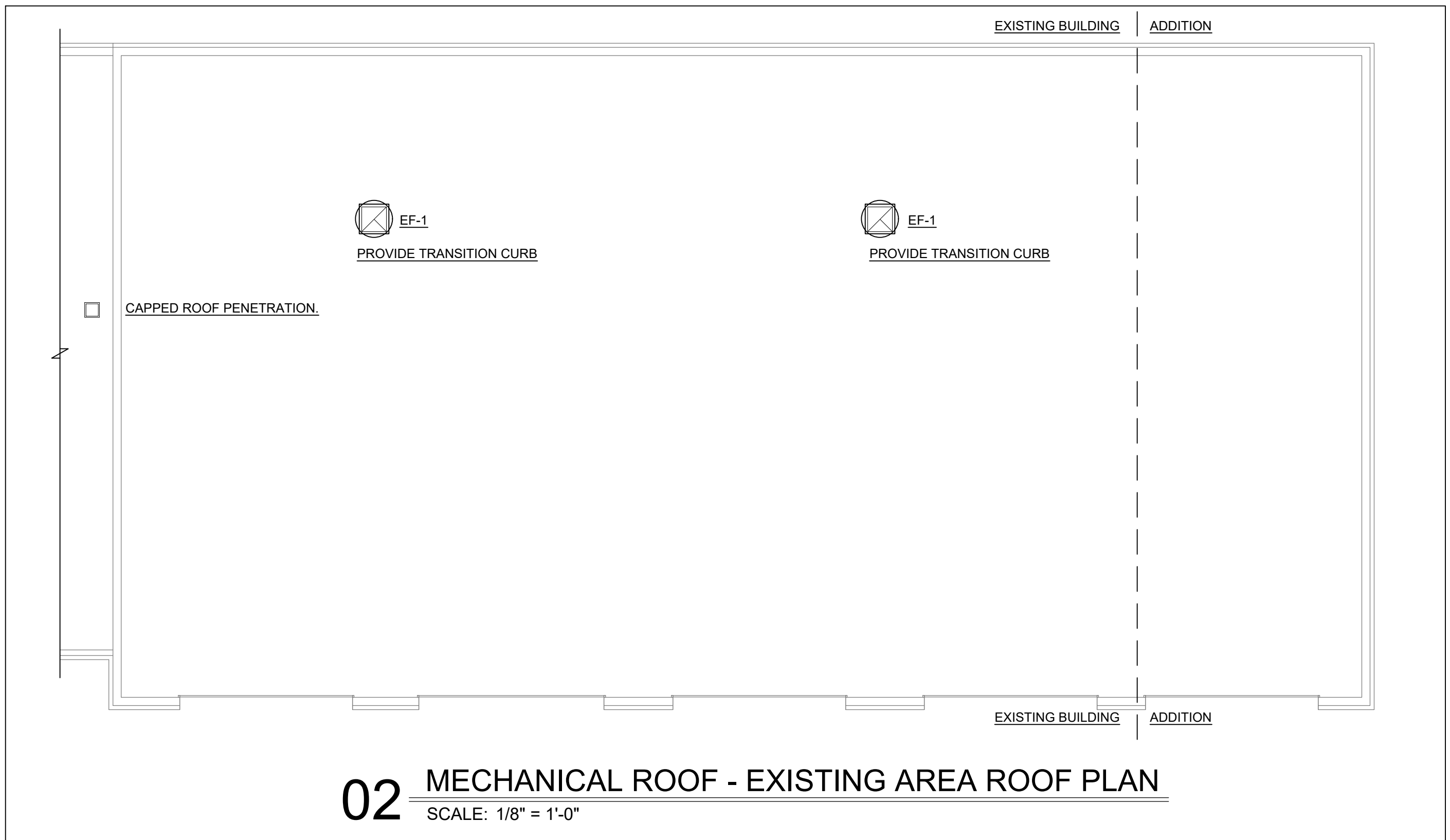


03 ENLARGED MECHANICAL ATTIC PLAN
SCALE: 1/4" = 1'-0"

TAGGED NOTES:

NOTES APPLY TO MULTIPLE SHEETS.

1. INSTALL NEW INDEPENDENT CO-RAY-VAC INFRA-RED SYSTEM IN NEW ADDITION APPARATUS BAY. INSTALL MODULATING GAS BURNER AND REFLECTOR JUST UNDER THE OVERHEAD DOOR IN ITS RAISED POSITION. PROVIDE WITH HIGH-EFFICIENCY HEAT REFLECTOR TILTED 45° TOWARDS OPPOSITE END OF BAY. TUBE SHALL BE OF ALUMINIZED STEEL WITH STAINLESS STEEL COUPLINGS. PROVIDE INSULATED VENT TERMINATION AND CAP RATED FOR GAS FIRED APPLIANCES.
2. INSTALL NEW TOX ALERT SYSTEM IN GARAGE AREA. PROVIDE 3 SENSOR TOX ALERT SYSTEM AND FAN CONTROL GUV-3 BY TOX ALERT INTERNATIONAL. TYPICAL OF 2. SYSTEM SHALL EXHAUST FAN AND OPEN MOTORIZED DAMPER ON INTAKE LOUVER UPON HIGH CONCENTRATION OF GASSES. REFER TO THE CONTROL SPECIFICATIONS FOR MORE INFORMATION. INSTALL SENSORS 60" AFF.
3. INSTALL LOUVER IN NEW WALL PENETRATION. WHERE (2) LOUVERS ARE INDICATED INSTALL LOUVERS ON TOP OF EACH OTHER. WITH A MAXIMUM OF 12" SEPARATING THE LOUVERS VERTICALLY. PROVIDE WITH MOTORIZED SHUT-OFF DAMPER AND PROVING SWITCH RATED FOR THE VOLTAGE OF THE ASSOCIATED EXHAUST FAN. DAMPER SHALL PROVE OPEN PRIOR TO FAN ENERGIZING. COORDINATE LINE VOLTAGE CIRCUITS WITH ELECTRICAL CONTRACTOR. COORDINATE INTERLOCK WITH TOX ALERT OUTPUT SIGNAL.
4. INSTALL NEW EXHAUST GRILL IN CEILING. CONNECT TO THE EXISTING EXHAUST DUCTWORK ABOVE 17'-3" CEILING. CONFIRM EXISTING CEILING OPENING SIZE PRIOR. MATCH EXISTING CEILING SIZE.
5. INSTALL WALL PROP EXHAUST FAN, BACKDRAFT DAMPER, OSHA GUARD, AND ICC500 RATED LOUVER ABOVE TOP OF STORM SHELTER. REFER TO MANUFACTURER'S INSTALLATION INSTRUCTION FOR ICC500 RATED LOUVER.
6. INSTALL LOUVERS SERVING THE STORM SHELTER BELOW TOP OF SHELTER. PROVIDE A BACKDRAFT DAMPER AT LOUVER CONNECTIONS. DUCT TO EQUIPMENT AS SHOWN. PROVIDE BACK DRAFT DAMPER IN DUCTWORK. REFER TO MANUFACTURER'S INSTALLATION INSTRUCTION FOR ICC500 RATED LOUVER.
7. INSTALL UNIT INSIDE STORM SHELTER. PUMP CONDENSATE TO EXTERIOR OF STORM SHELTER AND DOWN WALL TO BELOW GRADE. CONTINUE BELOW GRADE TO DRY WELL LOCATED OUTSIDE. PROVIDE 24x24x24 DRYWELL FILLED WITH WITH #57 GRAVEL, WITH A 12" LAYER OF TOPSOIL COVER. FINISHED DRYWELL FLUSH WITH GRADE OR PAVEMENT/ASPHALT AS REQUIRED. COORDINATE FINISH WITH CIVIL CONTRACTOR.
8. INSTALL ELECTRIC HEATER INSIDE GEAR/STORM SHELTER.
9. SEE ENLARGED MECHANICAL ATTIC PLANS FOR CONTINUATION.
10. DRAIN 3/4" INSULATED CONDENSATE TO OPEN RECEPTACLE OR DRAIN IN LOCATION INDICATED. WHERE INDICATED COMBINE CONDENSATE LINES TO 1" INSULATED LINE.
11. REFER TO THE VARIABLE REFRIGERANT PIPING FLOOR PLANS FOR ADDITIONAL INSTALLATION INFORMATION.
12. INSTALL CONDENSING UNIT ON 4" TALL CONCRETE PAD. COORDINATE PAD WITH CONCRETE CONTRACTOR.
13. INSTALL HORIZONTAL AIR HANDLING UNITS WITH SECONDARY DRAIN PAN AND CONDENSATE FLOAT CUT-OUT SWITCH. PROVIDE WITH VIBRATION ISOLATION SUPPORTS AND 2" FILTER RACKS. ROUTE GAS INTAKE AND FLU UP THRU ROOF WITH MANUFACTURER'S CONCENTRIC VENT.
14. OUTSIDE AIR AND EXHAUST AIR UP THRU ROOF TO NEW GRAVITY RELIEF HOOD.
15. INSTALL NEW ERV UNIT ON VIBRATION ISOLATION SUPPORTS AND FLEXIBLE DUCTWORK CONNECTIONS TO THE UNIT.
16. OUTSIDE AIR DUCT UP THRU ROOF. PROVIDE WITH A GOOSENECK FITTING TERMINATED A MINIMUM OF 12" CLEAR TO THE ROOF.
17. OUTSIDE AIR INTAKE AND SUPPLY AIR OUTLET REQUIRED FOR CEILING CASSETTE UNITS.
18. SA, RA, EA, AND OA INDICATED CONTINUE IN ATTIC & ABOVE CEILING SPACE. REFER TO FLOOR PLANS FOR CONTINUATION.
19. EQUIPMENT AND SHEETMETAL FOR CLASSROOM ADDITION SHALL BE PART OF CLASSROOM ALTERNATE. COORDINATE BID WITH GENERAL CONTRACTOR.
20. PROVIDE ACCESS DOOR IN CEILING WHERE UNITS ARE INSTALLED ABOVE GYP CEILING.



02 MECHANICAL ROOF - EXISTING AREA ROOF PLAN
SCALE: 1/8" = 1'-0"

GRD RUNOUT

SYMBOL	DUCT SIZE	SYMBOL	DUCT SIZE
S-1	6"ø	R-2	8"ø
S-2	8"ø	R-4	12"ø
E-1	6"ø	R-5	14"ø
E-5	*30x48*		

* MATCH EXISTING OPENING SIZE IN THE FIELD

Keyes Architects and Associates expressly reserve its common law copyright and other property rights in these documents. These documents are considered proprietary information and shall not be upgraded, changed or copied in any form or matter whatsoever nor are they to be assigned to any third party without first obtaining the express written permission and consent of Keyes Architects and Associates, 4717 Preston Hwy, Louisville, Kentucky 40213

MECHANICAL FLOOR PLAN

M1.02R1

PROJECT NO:

20-4017

DRAWN BY:

MGD

DATE:

04-20-2021

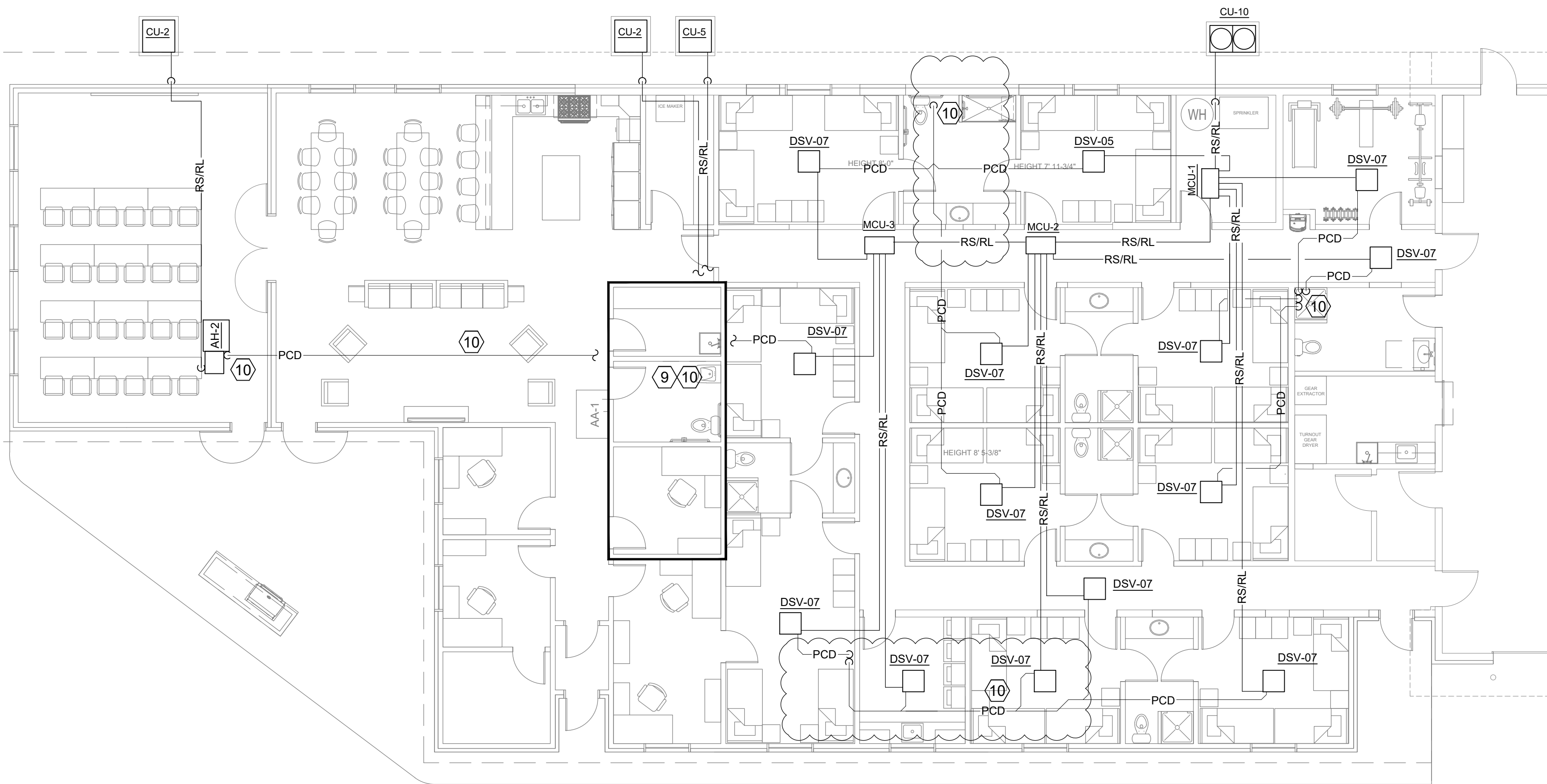


KEYES ARCHITECTS & ASSOCIATES
4717 PRESTON HIGHWAY
LOUISVILLE, KENTUCKY 40213 (502) 636-5113

RENOVATION FOR:

PLEASURE RIDGE PARK
FIRE STATION 1

4500 KERRICK LN.
LOUISVILLE, KY 40268



01 MECHANICAL PIPING FLOOR PLAN
SCALE: 1/8" = 1'-0"

VRF MODE CONTROL UNIT MCU	
SYMBOL (OUTDOOR)	MCU-1,2,3
MANUFACTURER MODEL NUMBER	SAMSUNG MCU-S4N
ELECTRICAL V / Ø / Hz	208-230/1/60
MCA / MOP	2.0 / 15
REMARKS	ALL
REFRIGERANT	R-410A

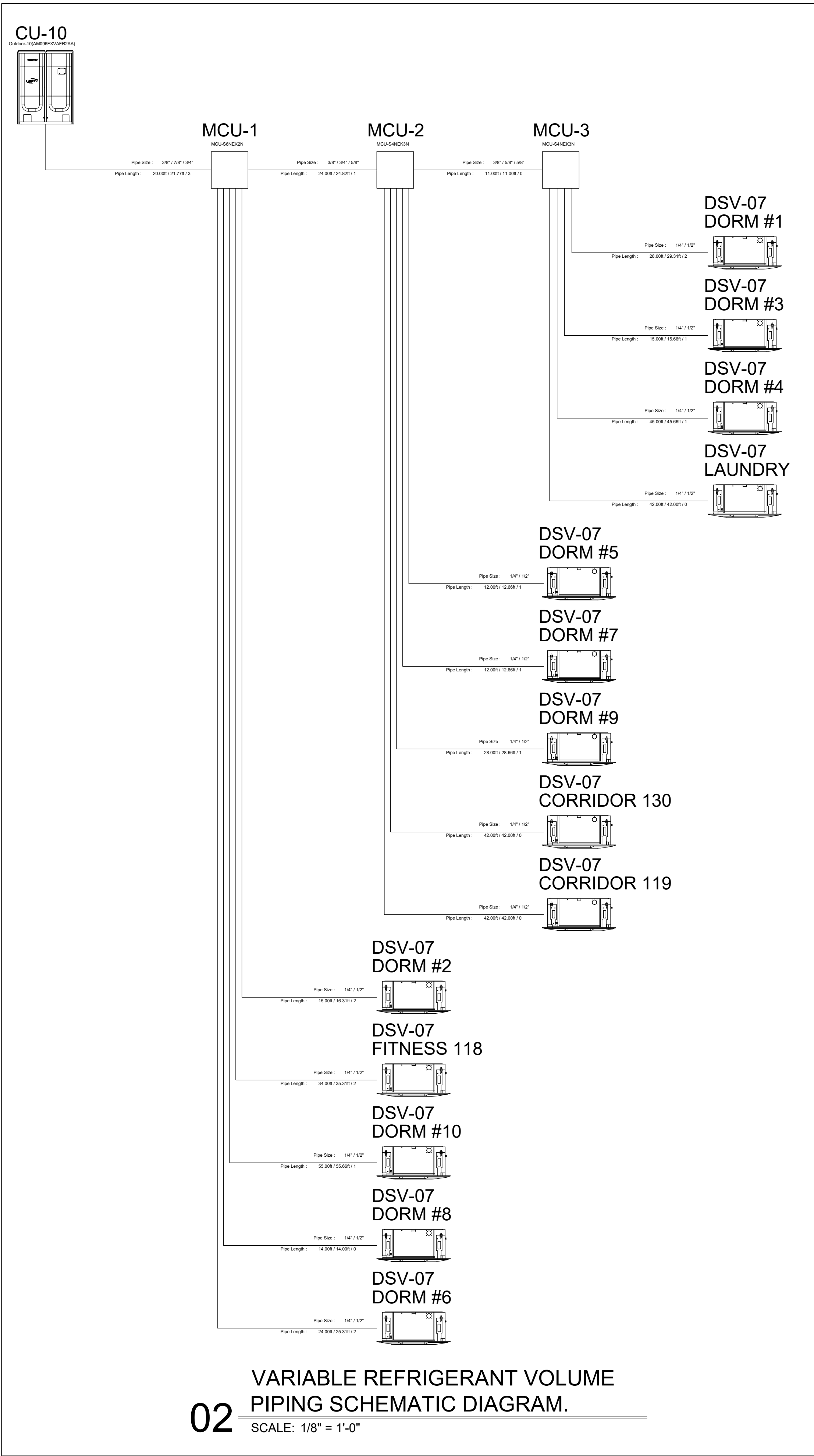
- REMARKS:
1. PROVIDE FACTORY ENGINEERED REFRIGERANT PIPING SYSTEM WITH FACTORY FITTINGS AND MODE CONTROL UNITS.
 2. PROVIDE WITH UL LISTING.
 3. PROVIDE FACTORY START UP FOR EQUIPMENT.
 4. MECHANICAL CONTRACTOR TO PROVIDE ELECTRICAL DISCONNECT. PROVIDE NEMA 3R DISCONNECT FOR OUTDOOR USE.
 5. ACCEPTABLE MANUFACTURERS: SAMSUNG DIAKIN, LG, MITSUBISHI.
 6. INSTALLING CONTRACTOR MUST HAVE COMPLETED MANUFACTURER'S CERTIFIED INSTALLATION CLASS WITHIN THE PAST 36 MONTHS.
 7. PROVIDE WALL MOUNTED MASTER CONTROL STATION.

VRF DSV UNIT SCHEDULE	
MARK	DSV-07
MANUFACTURER MODEL NUMBER	SAMSUNG AM007
AREA SERVED	MULTIPLE
CONFITURATION	CEILING CASSETTE
FAN CFM / ESP	300 / 0.01"
ELECTRICAL V / Ø / Hz	208/1/60
MCA / MOP	0.24 / 15
FAN POWER	65 W
COOLING CAPACITY	7,500
COOLING EAT/DAT	75.9°F / 56.0°F 63.7°F / 55.4°F
HEATING CAPACITY	8,700
HEATING EAT/DAT	65.8°F / 92.0°F

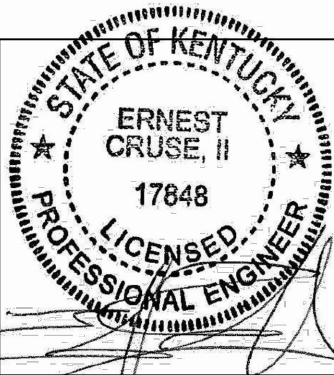
- REMARKS:
1. PROVIDE FACTORY ENGINEERED REFRIGERANT PIPING SYSTEM WITH FACTORY FITTINGS AND BRANCH SELECTOR BOXES.
 2. PROVIDE WITH UL LISTING.
 3. PROVIDE WITH PLASTER FRAME FOR INSTALLATION IN GYP OR PLASTER CEILING. COORDINATE WHERE REQUIRED WITH ARCHITECTURAL CEILING PLANS. PROVIDE ACCESS DOOR IN GYPSUM CEILINGS.
 4. PROVIDE FACTORY START UP FOR EQUIPMENT.
 5. INSTALLING CONTRACTOR MUST HAVE COMPLETED MANUFACTURER'S CERTIFIED INSTALLATION CLASS WITHIN THE PAST 36 MONTHS.
 6. PROVIDE WITH INTEGRAL CONDENSATE PUMP AND DRAIN OVERFLOW SAFETY INTERLOCK SWITCH.
 7. PROVIDE WALL MOUNTED THERMOSTAT AND SENSOR.
 4. ACCEPTABLE MANUFACTURERS: SAMSUNG, DIAKIN LG, MITSUBISHI.

VFR AIR-COOLED CONDENSING UNIT	
SYMBOL (OUTDOOR)	CU-10
MANUFACTURER MODEL NUMBER	SAMSUNG AM096FX
EER / IEER	12.7/28.6
COOLING (MBH)	96.0
HEATING (MBH)	108.0
REFRIGERANT	R-410A
ELECTRICAL V / Ø / Hz	208-230/3/60
MCA / MOP	37.8 / 50
REMARKS	ALL

- REMARKS:
1. PROVIDE FACTORY ENGINEERED REFRIGERANT PIPING SYSTEM WITH FACTORY FITTINGS AND BRANCH SELECTOR BOXES.
 2. PROVIDE WITH UL LISTING.
 3. PROVIDE FACTORY START UP FOR EQUIPMENT.
 4. MECHANICAL CONTRACTOR TO PROVIDE ELECTRICAL DISCONNECT. PROVIDE NEMA 3R DISCONNECT FOR OUTDOOR USE.
 5. INSTALLING CONTRACTOR MUST HAVE COMPLETED MANUFACTURER'S CERTIFIED INSTALLATION CLASS WITHIN THE PAST 36 MONTHS.
 6. PROVIDE WALL MOUNTED THERMOSTAT AND SENSOR.
 7. ACCEPTABLE MANUFACTURERS: SAMSUNG, DIAKIN LG, MITSUBISHI.



02 VARIABLE REFRIGERANT VOLUME
PIPING SCHEMATIC DIAGRAM.
SCALE: 1/8" = 1'-0"



KEYES ARCHITECTS & ASSOCIATES
4717 PRESTON HIGHWAY
LOUISVILLE, KENTUCKY 40213 (502) 636-5113

RENOVATION FOR:
PLEASURE RIDGE PARK
FIRE STATION 1
4500 KERRICK LN.
LOUISVILLE, KY 40268