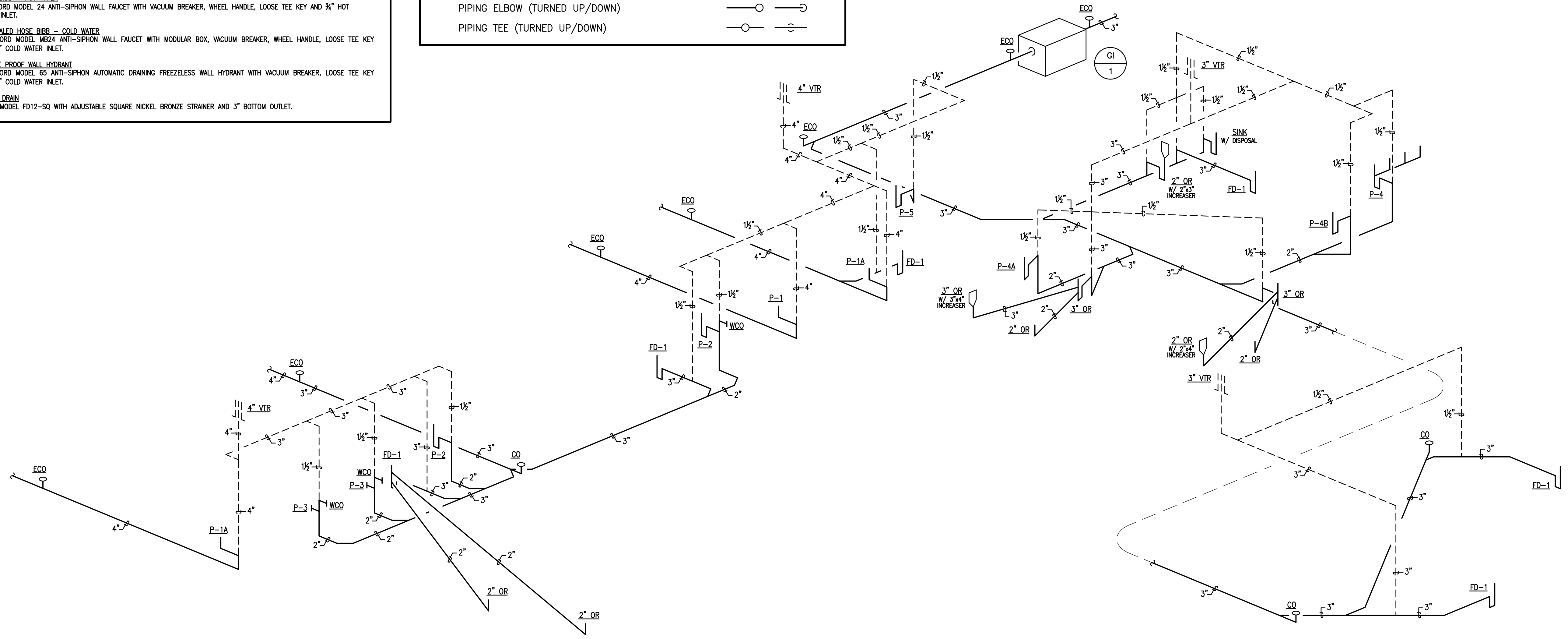
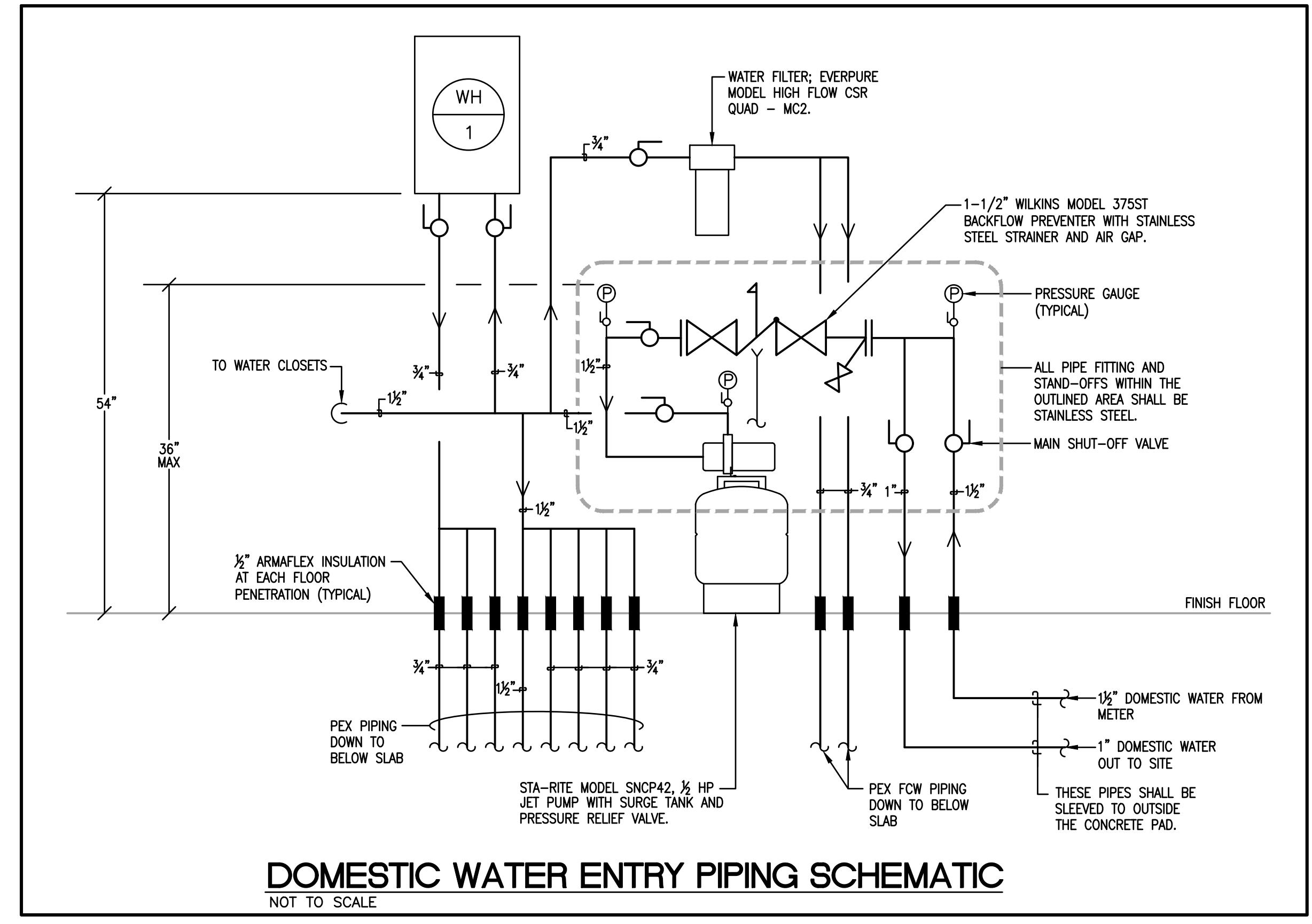


PLUMBING FIXTURE SPECIFICATIONS:

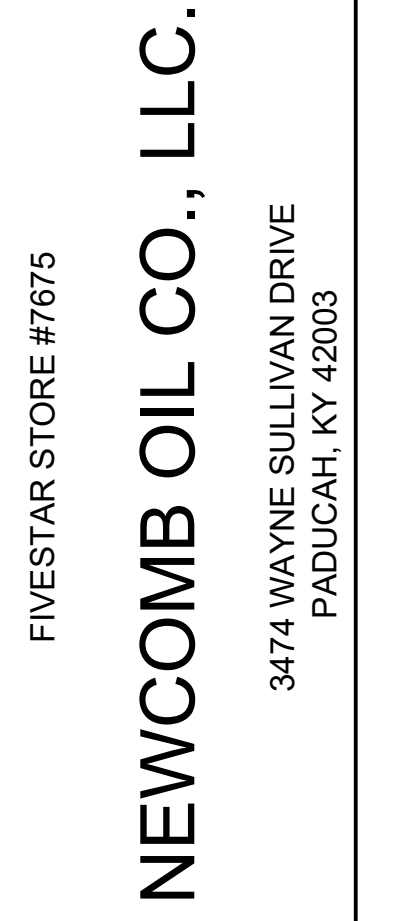
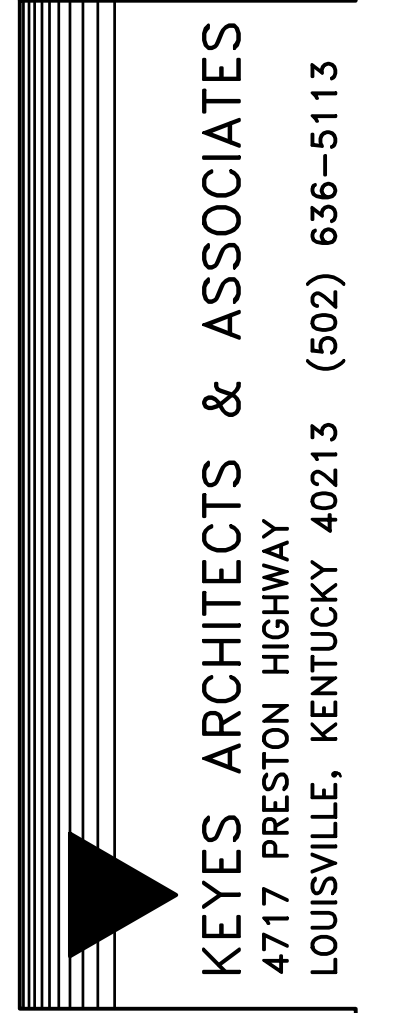
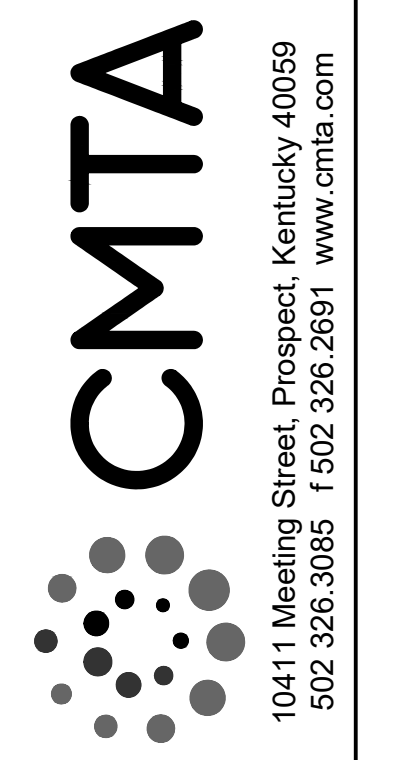
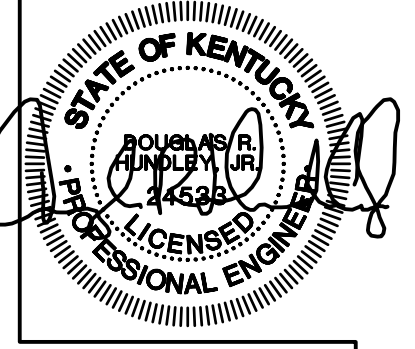
- P-1 **WATER CLOSET - FLUSH VALVE, FLOOR MOUNTED - STANDARD HEIGHT**
AMERICAN STANDARD MODEL 2234.015 "MADERA" VITREOUS CHINA, SIPHON JET, 1/2" TOP SPUD, ELONGATED BOWL WATER CLOSET WITH CHINA BOLT CAPS AND BEMIS MODEL 1955C WHITE OPEN FRONT SEAT WITH CHECK HINGE. FLUSH VALVE SHALL BE AS FOLLOWS:
- SLOAN OPTIMA MODEL 111-ES-S "REGAL PRO" SENSOR OPERATED 1.6 GPF WATER CLOSET FLUSH VALVE WITH TRANSFORMER AND POLISHED CHROME FINISH.
- P-1A **WATER CLOSET - FLUSH VALVE, FLOOR MOUNTED - ADA HEIGHT**
AMERICAN STANDARD MODEL 3043.102 "MADERA" VITREOUS CHINA, 17" HIGH, SIPHON JET, 1/2" TOP SPUD, ELONGATED BOWL WATER CLOSET WITH CHINA BOLT CAPS AND BEMIS MODEL 1955C WHITE OPEN FRONT SEAT WITH CHECK HINGE. INSTALL THE FLUSH VALVE ON THE "TOP" SIDE OF THE WATER CLOSET. FLUSH VALVE SHALL BE AS FOLLOWS:
- SLOAN OPTIMA MODEL 111-ES-S "REGAL PRO" SENSOR OPERATED 1.6 GPF WATER CLOSET FLUSH VALVE WITH TRANSFORMER AND POLISHED CHROME FINISH.
- P-2 **LAVATORY - BOWL INTEGRAL TO COUNTERTOP - INFRARED FAUCET**
REFER TO ARCHITECTURAL DRAWINGS AND SPECIFICATIONS FOR COORDINATION OF LAVATORY BOWL INTEGRAL TO COUNTERTOP. PROVIDE LAVATORY DRAIN WITH INTEGRAL PERFORATED STRAINER, 3/8" RIGID SUPPLIES WITH STOPS AND P-TRAP. LAVATORY TRIM SHALL BE AS FOLLOWS:
- SENSOR OPERATED FAUCET SHALL BE SLOAN OPTIMA MODEL ETI-600 WITH POLISHED CHROME-PLATED CAST BRASS FAUCET BODY, 0.5 GPM VANDAL RESISTANT AERATOR, MIXING VALVE AND TRANSFORMER.
- P-3 **URINAL - WALL HUNG - ADA**
TOTO MODEL UT105UG VITREOUS CHINA WALL-HUNG, 0.125 GPF URINAL WITH 3/4" TOP SPUD AND CONCEALED WALL HANGER BRACKETS. FLUSH VALVE SHALL BE AS FOLLOWS:
- SLOAN OPTIMA MODEL 186-0.125 DBP ESS SENSOR OPERATED 0.125 GPF URINAL FLUSH VALVE WITH TRANSFORMER AND POLISHED CHROME FINISH.
- P-4 **FOUR COMPARTMENT SINK**
JOHN BOOS MODEL E458-1620-14118 FOUR COMPARTMENT TYPE 300 STAINLESS STEEL SINK WITH 16"x20"x14" DEEP BOWLS, 9-3/4" HIGH BOXED BACKSPASH, (2) 18" DRAINBOARDS AND STAINLESS STEEL LEGS WITH SIDE BRACING, STAINLESS STEEL GUSSETS AND BULLET FEET. PROVIDE WITH (4) T&S B-5990 LEVER HANDLE WASTES, CHROME SUPPLIES, STOPS, TAILPIECE, P-TRAP, DRAIN AND ESCUTCHEONS. SINK TRIM SHALL BE AS FOLLOWS:
- (1) T&S BRASS MODEL B-0290 WALL MOUNTED FAUCET WITH 12" SWING SPOUT AND 4-ARM HANDLES.
- (1) T&S BRASS MODEL B-0287-427-BC WALL MOUNTED PRE-RINSE FAUCET WITH 12" SWING SPOUT, 44" FLEXIBLE STAINLESS STEEL HOSE, AND 4-ARM HANDLES.
- P-4A **HAND SINK - BOWL INTEGRAL TO COUNTERTOP - GOOSENECK FAUCET**
REFER TO ARCHITECTURAL DRAWINGS AND SPECIFICATIONS FOR COORDINATION OF LAVATORY BOWL INTEGRAL TO COUNTERTOP. PROVIDE LAVATORY DRAIN WITH INTEGRAL PERFORATED STRAINER, 3/8" RIGID SUPPLIES WITH STOPS AND P-TRAP. LAVATORY TRIM SHALL BE AS FOLLOWS:
- GOOSENECK FAUCET SHALL BE MOEN MODEL 8938 "SANI-STREAM" WITH POLISHED CHROME-PLATED CAST BRASS FAUCET BODY, 3-1/2" SPOUT, 2.0 GPM AERATOR AND WRIST BLADE HANDLES.
- P-4B **HAND SINK - WALL-HUNG**
MANSFIELD GRAND ISLE MODEL 2018HNS VITREOUS CHINA LAVATORY WITH 4" CENTER FAUCET HOLES. PROVIDE CONCEALED ARM CARRIER, LAVATORY DRAIN WITH INTEGRAL PERFORATED STRAINER, 3/8" RIGID SUPPLIES WITH STOPS AND P-TRAP AND ADA COMPLIANT TRAP WRAP. MOUNT LAVATORY AT ADA HEIGHT. LAVATORY TRIM SHALL BE AS FOLLOWS:
- SINGLE HANDLE FAUCET SHALL BE AMERICAN STANDARD RELIANT 3 MODEL 7385.004 WITH POLISHED CHROME-PLATED CAST BRASS FAUCET BODY WITH 1.2 GPM AERATOR.
- P-5 **MOP BASIN - 24"x24" - RECESSED IN FLOOR**
ZURN MODEL Z1996-24 MOP SERVICE BASIN WITH MOLDED HIGH DENSITY COMPOSIT BASIN, PVC DRAIN BODY, STAINLESS STEEL STRAINER AND 3" GASKETED OUTLET CONNECTION. BASIN SHALL BE RECESSED IN CONCRETE FLOOR. REFERENCE DETAIL ON DRAWING A-551 FOR ADDITIONAL INFORMATION.
- P-6 **ICE MAKER CONNECTION BOX**
IPS CORPORATION WATER-TITE MODEL AB9702HA ICE MAKER OUTLET BOX WITH INTEGRAL WATER HAMMER ARRESTOR AND PRELOADED NAILS. FIELD PAINT EXPOSED PORTION OF BOX TO MATCH ADJACENT WALL SURFACES. VERIFY PIPE CONNECTION TYPE PRIOR TO ORDERING.
- HB **HOSE BIBB - COLD WATER**
WOODFORD MODEL 24 ANTI-SIPHON WALL FAUCET WITH VACUUM BREAKER, REMOVABLE KEYED HANDLE, LOOSE TEE KEY AND 3/4" COLD WATER INLET.
- HB-1 **HOSE BIBB - HOT WATER**
WOODFORD MODEL 24 ANTI-SIPHON WALL FAUCET WITH VACUUM BREAKER, WHEEL HANDLE, LOOSE TEE KEY AND 3/4" HOT WATER INLET.
- HB-2 **CONCEALED HOSE BIBB - COLD WATER**
WOODFORD MODEL MB24 ANTI-SIPHON WALL FAUCET WITH MODULAR BOX, VACUUM BREAKER, WHEEL HANDLE, LOOSE TEE KEY AND 3/4" COLD WATER INLET.
- FPWH **FREEZE PROOF WALL HYDRANT**
WOODFORD MODEL 65 ANTI-SIPHON AUTOMATIC DRAINING FREEZELESS WALL HYDRANT WITH VACUUM BREAKER, LOOSE TEE KEY AND 3/4" COLD WATER INLET.
- FD-1 **FLOOR DRAIN**
WATTS MODEL FD12-SQ WITH ADJUSTABLE SQUARE NICKEL BRONZE STRAINER AND 3" BOTTOM OUTLET.

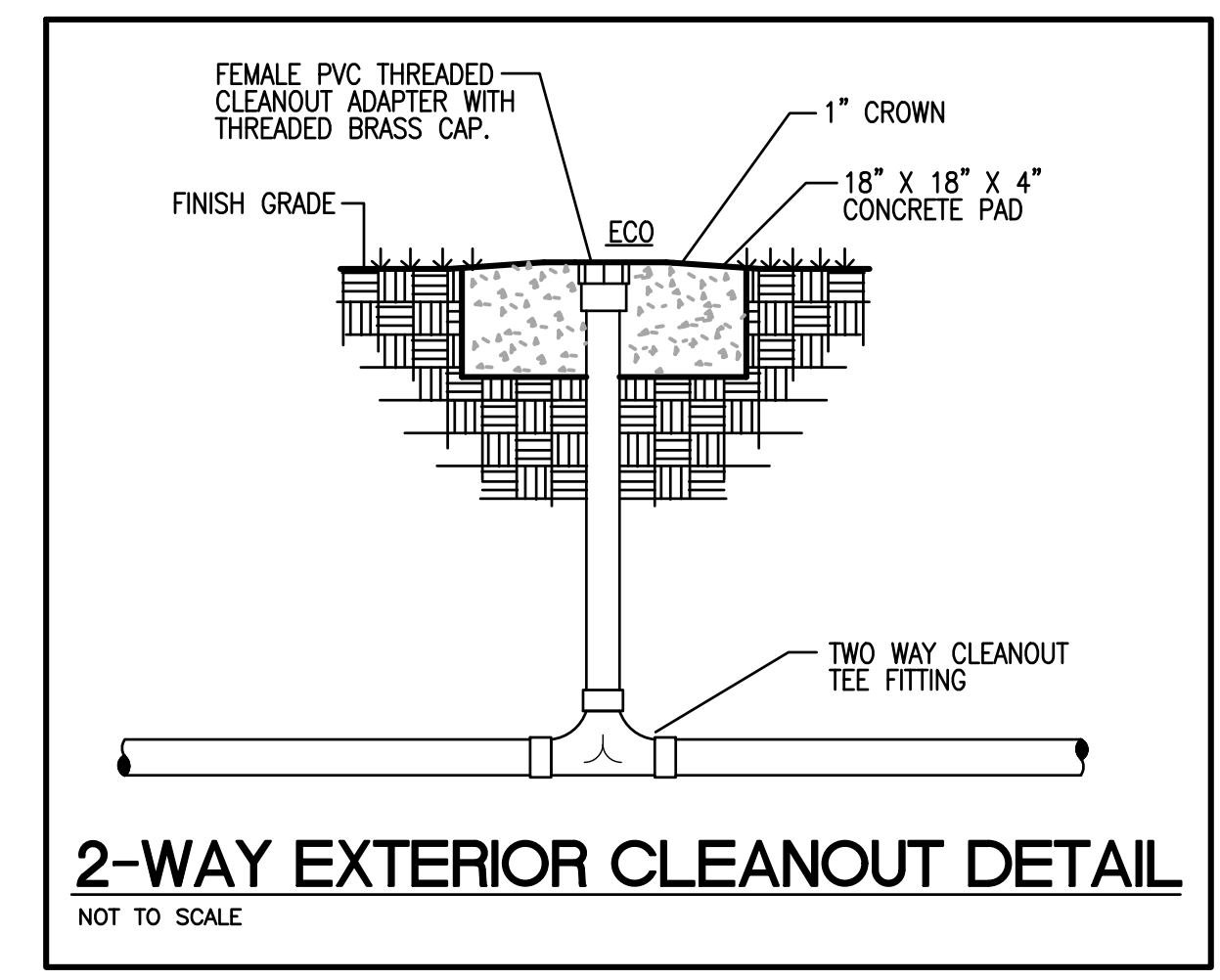
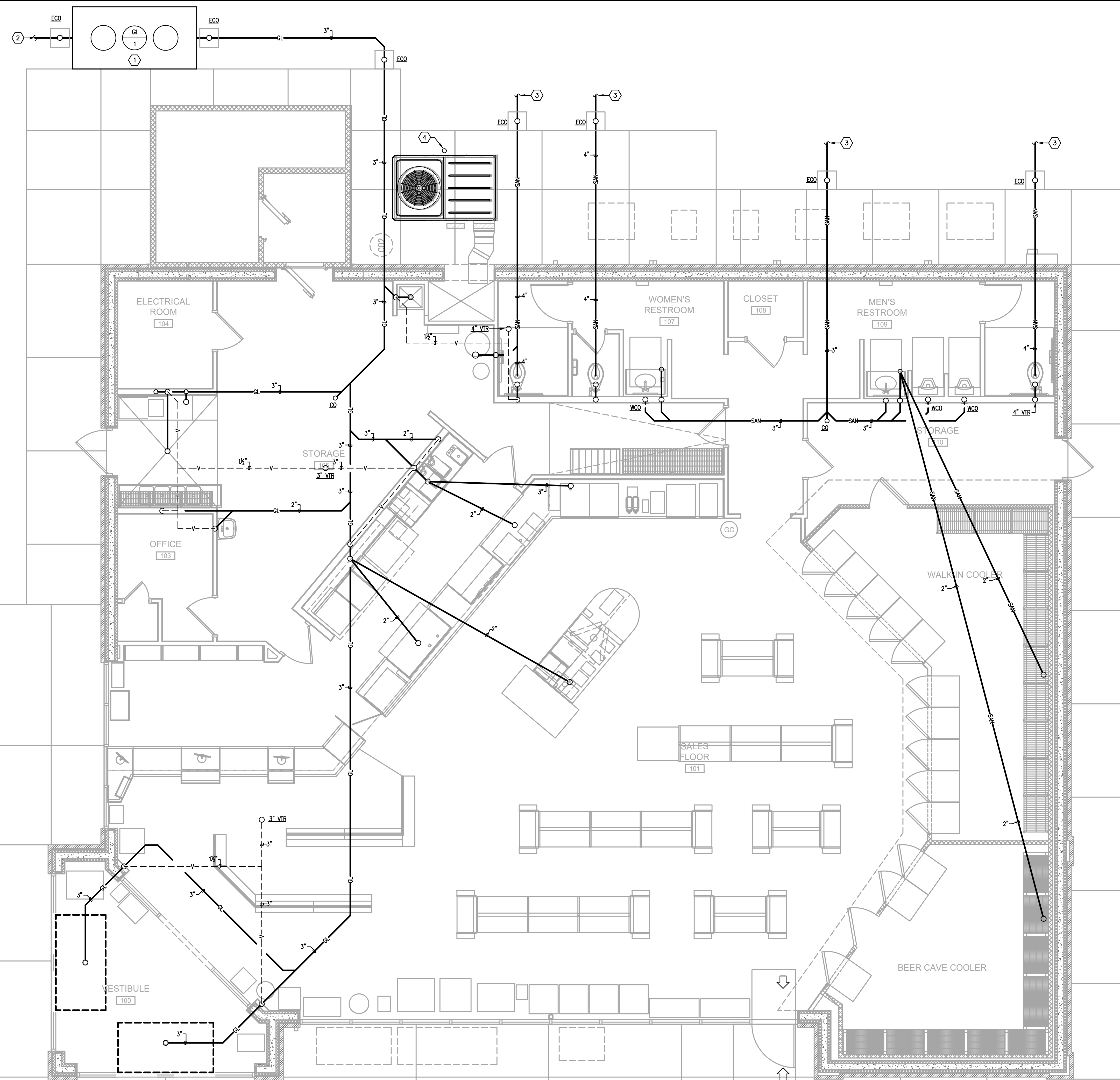
PLUMBING LEGEND

ABOVE FINISHED FLOOR	AFF
AREA DRAIN	AD
CLEANOUT	CO
COLD WATER	CW
ELECTRICAL CONTRACTOR	EC
EXTERIOR CLEANOUT (PVC FEMALE ADAPTER W/ BRASS CAP)	ECO
FLOOR DRAIN	FD
FREEZE PROOF WALL HYDRANT	FPWH
GENERAL CONTRACTOR	GC
GREASE INTERCEPTOR	GI
HOSE BIBB	HB
HOT WATER	HW
MECHANICAL CONTRACTOR	MC
OPEN RECEPTACLE	OR
PLUMBING CONTRACTOR	PC
POLYVINYL CHLORIDE	PVC
TYPICAL	TYP
VENT THROUGH ROOF	VTR
WATER HEATER	WH
SANITARY PIPING	— SAN —
GREASE WASTE PIPING	— GL —
STORM PIPING	— SS —
SANITARY VENT PIPING	— V —
DOMESTIC COLD WATER PIPING	— — —
DOMESTIC HOT WATER PIPING (110° F)	— — —
FILTERED COLD WATER	— FCW —
NATURAL GAS PIPING	— G —
PRESSURE GAUGE	— P —
SOLENOID VALVE	— SV —
GAS SHUT-OFF VALVE	— SV —
BALL VALVE	— BV —
SHUT-OFF VALVE AT EQUIPMENT	— BV —
BALL VALVE IN RISER	— BV —
PIPING ELBOW (TURNED UP/DOWN)	— E —
PIPING TEE (TURNED UP/DOWN)	— T —



SANITARY WASTE AND VENT RISER DIAGRAM (OPPOSITE HAND FROM FLOOR PLAN)



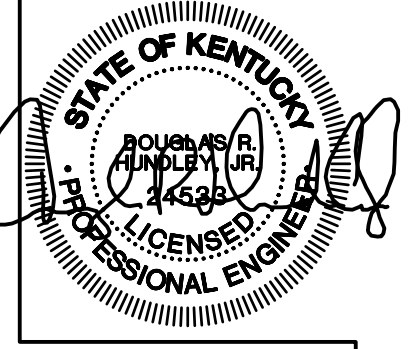


- PLUMBING TAG NOTES:**
1. FURNISH AND INSTALL A 1000 GALLON PRECAST CONCRETE GREASE TRAP. EXACT LOCATION SHALL BE SITE SPECIFIC AND DETERMINED BY OWNER.
 2. 3" SANITARY OUT TO SITE 5'-0". REFERENCE CIVIL DRAWINGS FOR CONTINUATION. COORDINATE EXACT LAYOUT OF EXTERIOR SANITARY WITH OWNER AND SITE PLAN PRIOR TO ROUGH-IN.
 3. 4" SANITARY OUT TO SITE 5'-0". REFERENCE CIVIL DRAWINGS FOR CONTINUATION. COORDINATE EXACT LAYOUT OF EXTERIOR SANITARY WITH OWNER AND SITE PLAN PRIOR TO ROUGH-IN.
 4. CONDENSATE LINE FROM HVAC EQUIPMENT SHALL BE CONNECTED TO THE DOWNSPOUT COLLECTION DRAIN LINE AT PERIMETER OF BUILDING.

- PLUMBING GENERAL NOTES:**
- A. PLUMBING CONTRACTOR SHALL PROVIDE AS-BUILT DRAWINGS WITH DIMENSIONED LOCATIONS OF SANITARY, WATER AND GAS LINES. REFERENCE GENERAL NOTE "A" FOR PHOTOGRAPHING REQUIREMENTS. LOCATION, DIRECTION AND CORRESPONDING NUMBER OF EACH PHOTOGRAPH SHALL BE INDICATED ON THE AS-BUILT DRAWINGS.
 - B. THE OWNER SHALL CHECK WALLS FOR LOCATIONS OF ALL PLUMBING LINES PRIOR TO DRYWALL BEING INSTALLED.
 - C. PLUMBING CONTRACTOR SHALL CAULK OR FOAM ALL WALL/CEILING PENETRATIONS MADE AS A RESULT OF PLUMBING PIPING INSTALLATION PRIOR TO INSULATION BEING INSTALLED TO IMPROVE THE VAPOR BARRIER. COORDINATE THIS WORK WITH THE GENERAL CONTRACTOR.
 - D. THE FOUR COMPARTMENT SINK LIP SHALL BE SET AT 39" ABOVE FINISH FLOOR.
 - E. ALL TRENCHES UNDER PAVEMENT SHALL BE FILLED WITH STONE.
 - F. ALL TOILET FLANGES SHALL BE CAST IRON OR STAINLESS STEEL.
 - G. ALL INTERIOR AND EXTERIOR DOMESTIC WATER PIPING SHALL BE CROSS-LINKED POLYETHYLENE (PEX OR EQUAL).
 - H. ALL INTERIOR DOMESTIC WATER LINES SHALL BE 3/4" MINIMUM. WATER LINES SERVING FLUSH VALVES SHALL BE 1/2".
 - I. ALL DOMESTIC WATER LINES ENTERING AND EXITING THE BUILDING BELOW GRADE SHALL BE INSTALLED IN A SLEEVE FROM THE POINT WHERE THEY PENETRATE THE FLOOR TO BEYOND THE BLACK CONCRETE OR THE EQUIPMENT PAD, DEPENDING ON WHAT DIRECTION THEY EXIT THE BUILDING.
 - J. ALL WATER LINES SHALL BE SPACED 2" APART WHERE THEY PENETRATE THE FLOOR SLAB FOR EASE OF FUTURE MAINTENANCE.
 - K. ALL SHUT-OFF VALVES ON DOMESTIC WATER LINES SHALL BE TAGGED WITH 3/8"x1/2" ENGRAVED LAMINATED OR BRASS TAGS.
 - L. PLUMBING CONTRACTOR SHALL FURNISH AND INSTALL A FIVE POUND ANODE ON ALL FREEZE PROOF WATER HYDRANTS. GENERAL CONTRACTOR SHALL PROVIDE THE OWNER WITH PHOTOGRAPHS OF ALL ANODES TO VERIFY INSTALLATION.
 - M. GAS AND WATER UTILITY ENTRANCES INTO THE BUILDING SHALL BE SLEEVED TO OUTSIDE THE CONCRETE PADS.
 - N. PRIOR TO TOILETS BEING SET, THE PLUMBING CONTRACTOR SHALL VERIFY FLATNESS OF THE FLOOR WITH THE GENERAL CONTRACTOR TO ENSURE EACH TOILET WILL BE IN COMPLETE CONTACT WITH THE FLOOR AND NO SHIMS WILL BE REQUIRED.
 - O. EXTERIOR SEWER CLEANOUTS SHALL BE PLACED WHERE INDICATED ON THE PLANS AND/OR A MAXIMUM OF 95'-0" APART.
 - P. ALL OUTSIDE CLEANOUTS SHALL BE BRASS.
 - Q. ALL SANITARY AND GREASE WASTE PIPING SHALL BE SCHEDULE 40 PVC.

FLOOR PLAN - SANITARY WASTE AND VENT
SCALE: 1/4"=1'-0"

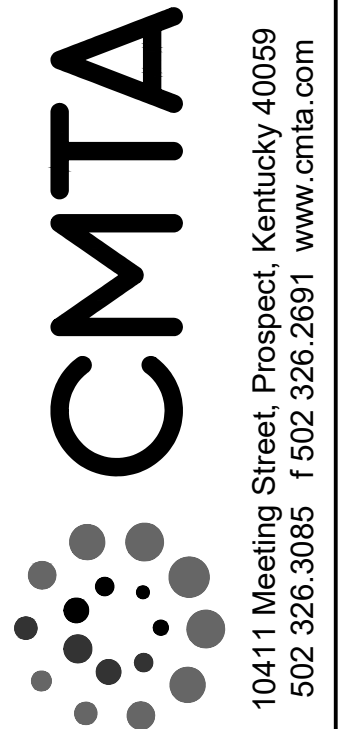
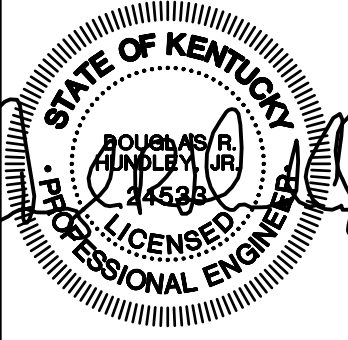
PROJECT NO:
21-4154
DRAWN BY:
WTD
DATE:
06/25/2021



CMTA
10411 Meeting Street, Prospect, Kentucky 40059
502.326.3085 f 502.326.2691 www.cmta.com

KEYES ARCHITECTS & ASSOCIATES
4717 PRESTON HIGHWAY
LOUISVILLE, KENTUCKY 40213 (502) 636-5113

FIVESTAR STORE #7675
NEWCOMB OIL CO., LLC.
3474 WAYNE SULLIVAN DRIVE
PADUCAH, KY 42003



KEYES ARCHITECTS & ASSOCIATES
4717 PRESTON HIGHWAY
LOUISVILLE, KENTUCKY 40213 (502) 636-5113

NEWCOMB OIL CO., LLC.
3474 WAYNE SULLIVAN DRIVE
PADUCAH, KY 42003

PLUMBING FIXTURE SCHEDULE

DESIGNATOR	FIXTURE	CW	HW	SAN	VENT
P-1	WATER CLOSET - FLOOR SET - FLUSH VALVE	1 1/4"	--	4"	2"
P-1A	WATER CLOSET - FLOOR SET - FLUSH VALVE - ADA	1 1/4"	--	4"	4"
P-2	LAVATORY - INTEGRAL TO COUNTERTOP	1/2"	1/2"	1 1/2"	1 1/2"
P-3	URINAL - ADA	1/2"	--	2"	1 1/2"
P-4	FOUR COMPARTMENT STAINLESS STEEL SINK	3/4"	3/4"	2"	1 1/2"
P-4A	ONE COMPARTMENT HAND SINK INTEGRAL TO COUNTERTOP	1/2"	1/2"	1 1/2"	1 1/2"
P-4B	WALL-HUNG HAND SINK	1/2"	1/2"	1 1/2"	1 1/2"
P-5	RECESSED MOP BASIN - 24"x24"	--	--	3"	1 1/2"
P-6	ICE MAKER CONNECTION BOX	1/2"	--	--	--
HB	COLD WATER HOSE BIBB	3/4"	--	--	--
HB-1	HOT WATER HOSE BIBB	--	3/4"	--	--
HB-2	CONCEALED COLD WATER HOSE BIBB	3/4"	--	--	--
FPWH	FREEZE-PROOF WALL HYDRANT	3/4"	--	--	--
FD-1	SQUARE TOP FLOOR DRAIN - 3" OUTLET	--	--	3"	1 1/2"

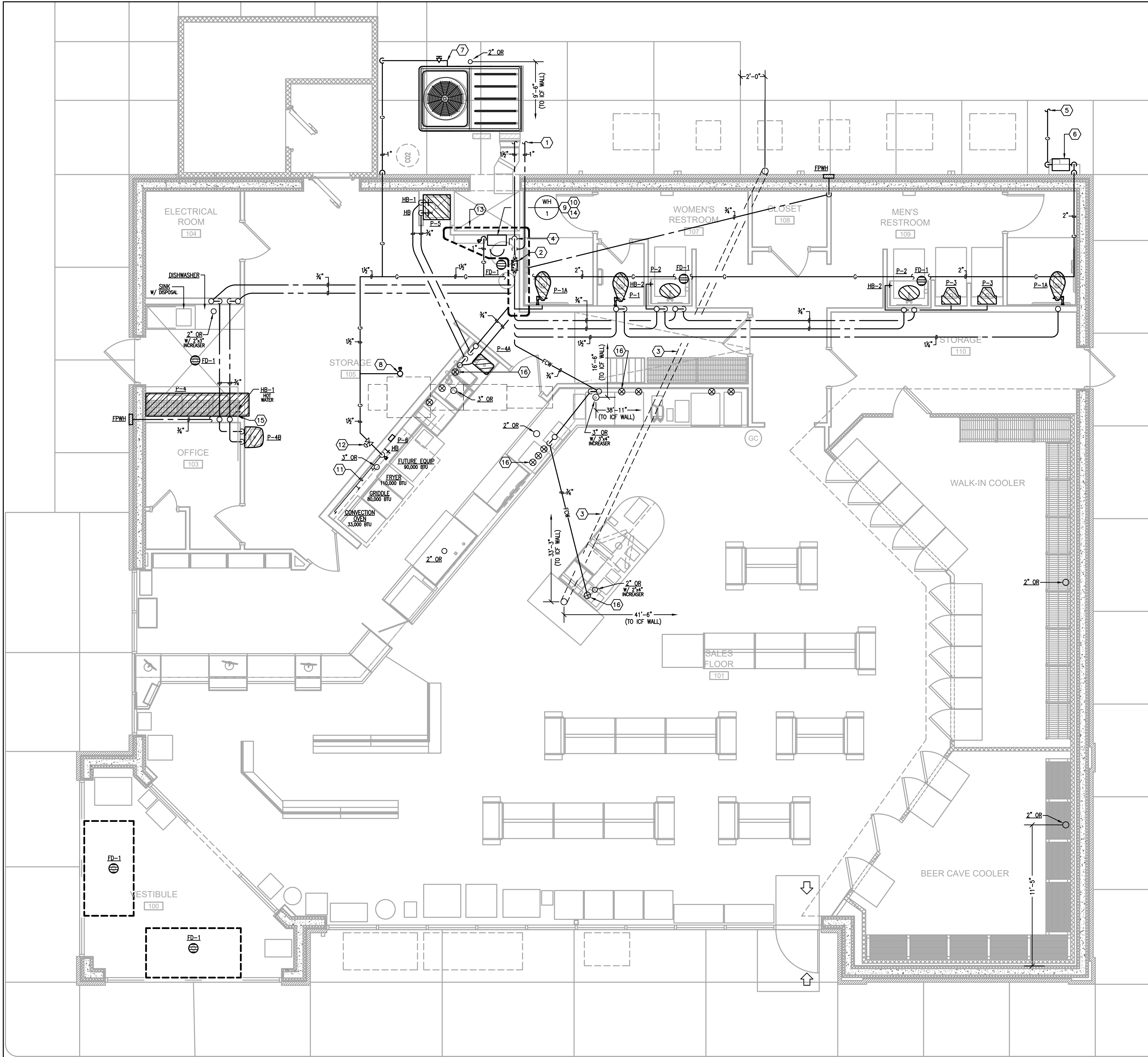
NOTES:

- PIPE SIZES ARE AS INDICATED UNLESS OTHERWISE NOTED ON FLOOR PLANS AND RISER DIAGRAMS.
- MINIMUM 2" SANITARY PIPING UNDERGROUND.
PROVIDE ALL REQUIRED PIPING TO FIXTURES INDICATED ON THE FLOOR PLANS, INDICATED WITH A "P" DESIGNATION. PROVIDE PIPING OF SIZE INDICATED IN THIS SCHEDULE.
- PIPE ALL EQUIPMENT (SUPPLIED BY OTHERS) AS REQUIRED TO OBTAIN A FULL AND OPERATIONAL SYSTEM PROVIDE BACKFLOW PROTECTION AS/IF REQUIRED BY THE DETAILS AND BY THE STATE PLUMBING CODE ALL EQUIPMENT SHALL BE CONNECTED PER THE MANUFACTURER'S REQUIREMENTS. THE PLUMBING CONTRACTOR SHALL ALSO INSTALL ANY DRAIN PIPING CONNECTIONS AND SPILL INDIRECTLY TO EITHER AN OPEN RECEPTACLE OR FLOOR DRAIN. REFER TO ARCHITECTURAL PLANS FOR EXACT PLACEMENT OF ALL EQUIPMENT.

- PLUMBING TAG NOTES:**
- (1) 1/2" and (1) 1" DOMESTIC WATER LINES OUT TO SITE. REFERENCE CIVIL DRAWINGS FOR CONTINUATION. WATER LINES MUST BE CONTINUOUS WITH NO JOINTS ALL THE WAY TO THE METER.
 - FURNISH AND INSTALL 1/2" WILKINS MODEL 375 BACKFLOW PREVENTER WITH AIR GAP AND STRAINER. REFERENCE THE DOMESTIC WATER ENTRY PIPING SCHEMATIC ON DRAWING P101 FOR ADDITIONAL INFORMATION.
 - FURNISH AND INSTALL 6" PVC SLEEVE BELOW SLAB WITH (2) 45° ELBOWS ON EACH END.
 - (1) 1/2" and (1) 1" DOMESTIC WATER LINES UP FROM BELOW SLAB. REFERENCE DOMESTIC WATER ENTRY SCHEMATIC ON DRAWING P1.01 FOR ADDITIONAL INFORMATION.
 - NATURAL GAS SERVICE OUT TO SITE. COORDINATE PIPE MATERIAL, SIZE AND GAS PRESSURE WITH LOCAL UTILITY COMPANY.
 - FURNISH AND INSTALL NEW NATURAL GAS METER PER LOCAL UTILITY COMPANY REQUIREMENTS.
 - EXTEND 1" GAS TO COOLING UNIT AND CONNECT. FURNISH AND INSTALL GAS SHUT-OFF VALVE AND 6" DIRT LEG.
 - EXTEND 3/4" GAS TO MAKE-UP AIR UNIT ON ROOF AND CONNECT. FURNISH AND INSTALL 6" DIRT LEG AND GAS SOLENOID VALVE. INTERCONNECT GAS SOLENOID VALVE TO HOOD FIRE SUPPRESSION SYSTEM. COORDINATE THIS WORK WITH THE ELECTRICAL CONTRACTOR.
 - EXTEND 1" GAS TO WATER HEATER AND CONNECT. FURNISH AND INSTALL GAS SHUT-OFF VALVE AND 6" DIRT LEG.
 - WH-1 - FURNISH AND INSTALL A RINNAI MODEL RL75(VC2528FFUD-US), TANKLESS GAS FIRED WATER HEATER WITH MINIMUM INPUT OF 10,300 BTUH AND A MAXIMUM INPUT OF 180,000 BTUH.
 - ROUTE 1/2" GAS HEADER LOW ON WALL BEHIND COOKING EQUIPMENT. FURNISH AND INSTALL GAS QUICK CONNECT AND GAS SHUT-OFF VALVE AT EACH PIECE OF EQUIPMENT AND PROVIDE (1) 3/4" QUICK CONNECT AND GAS SHUT-OFF VALVE FOR FUTURE CONNECTION.
 - FURNISH AND INSTALL GAS SOLENOID VALVE. INTERCONNECT WITH HOOD FIRE SUPPRESSION SYSTEM.
 - PROVIDE BRASS TAG LABELS AND SHUTOFF VALVES IN THIS AREA FOR WATER PIPING AT EACH WALL OR FLOOR PENETRATION.
 - APPROXIMATE LOCATION OF PRESSURE ASSIST PUMP. REFERENCE DOMESTIC WATER ENTRY PIPING SCHEMATIC ON DRAWING P1.01 FOR ADDITIONAL INFORMATION.
 - HOSE BIBB SHALL BE MOUNTED 18" ABOVE FINISH FLOOR AND 7"-6" OFF OF THE ICF WALL.
 - FURNISH AND INSTALL A ZURN MODEL QCM43-6GX COPPER MANIFOLD AT EACH GROUP OF SHUT-OFF VALVES LOCATED WITHIN CABINET SPACE.

NEW GAS METER LOAD:

HVAC AIR HANDLING UNIT -	150,000 BTUH
DOMESTIC WATER HEATER -	180,000 BTUH
MAKE-UP AIR UNIT -	109,600 BTUH
KITCHEN EQUIPMENT -	313,000 BTUH
TOTAL CONNECTED LOAD -	752,600 BTUH



FLOOR PLAN - WATER AND GAS

SCALE: 1/4"=1'-0"

