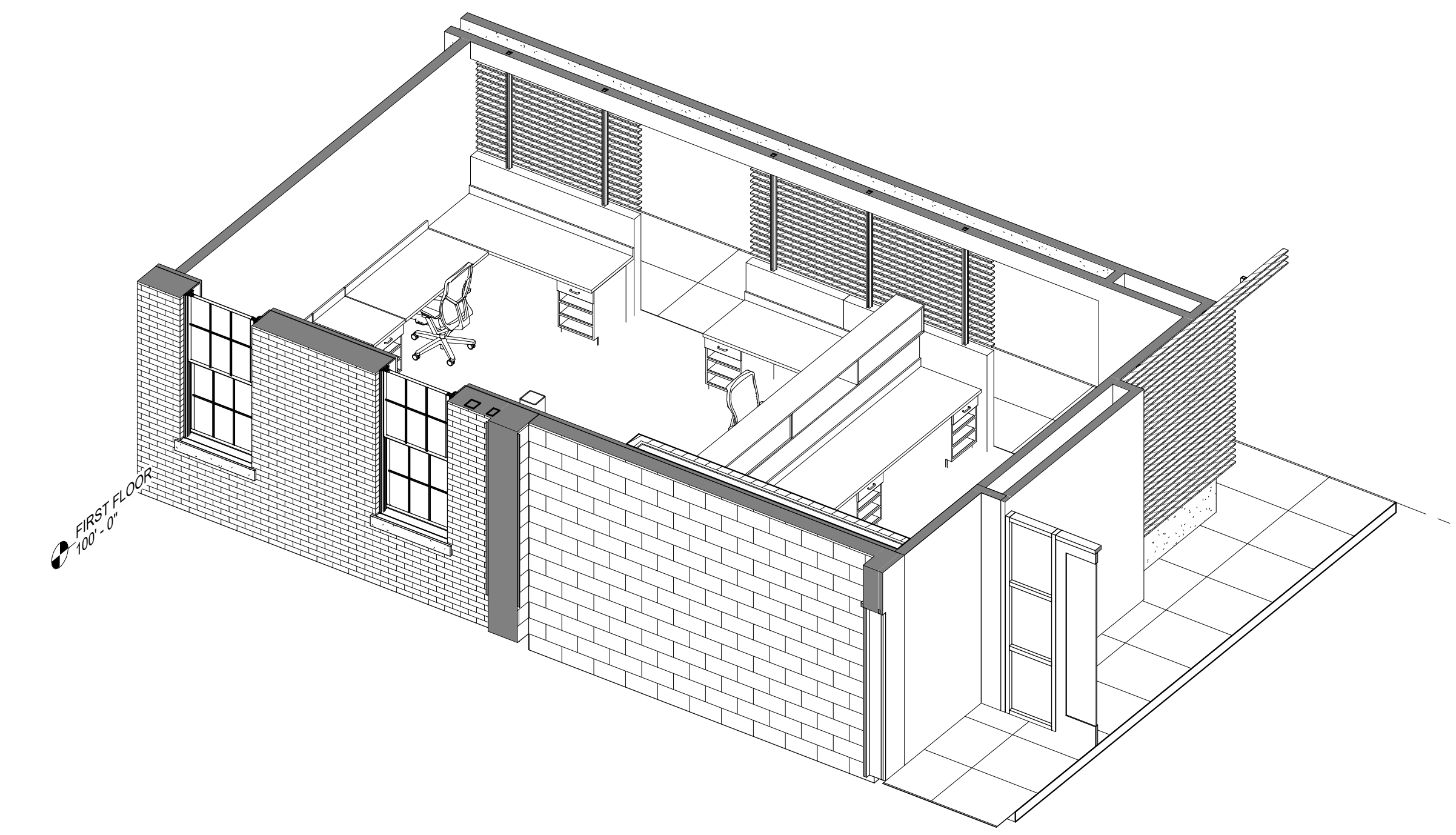
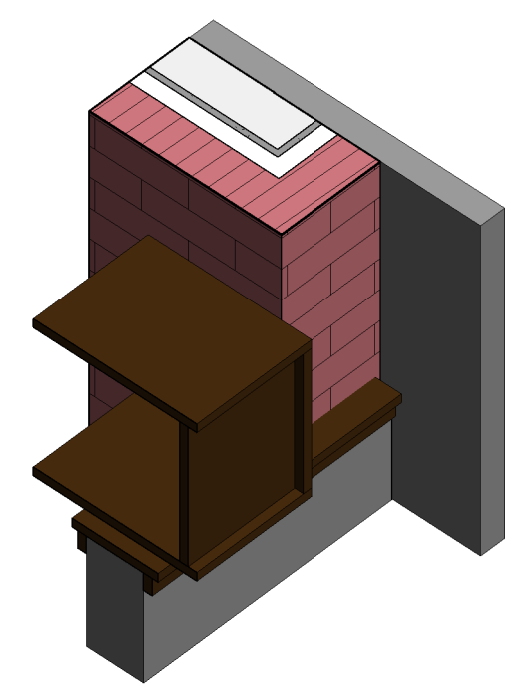


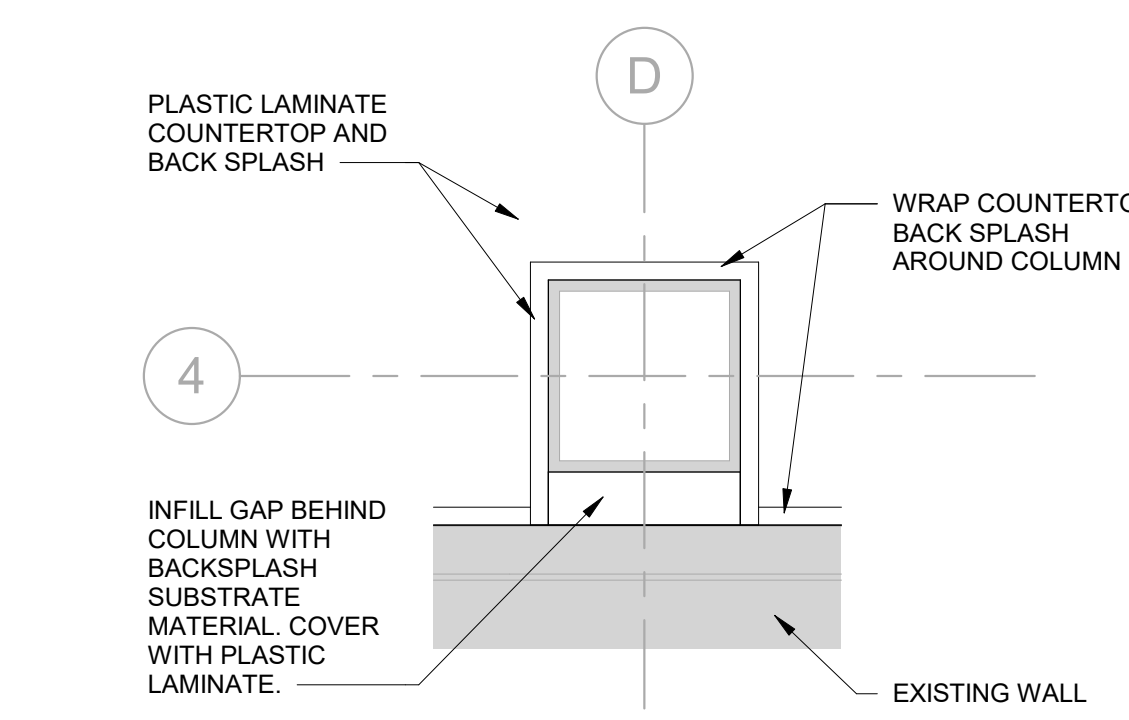
1
PO-1
REFERENCE 3D VIEW 1



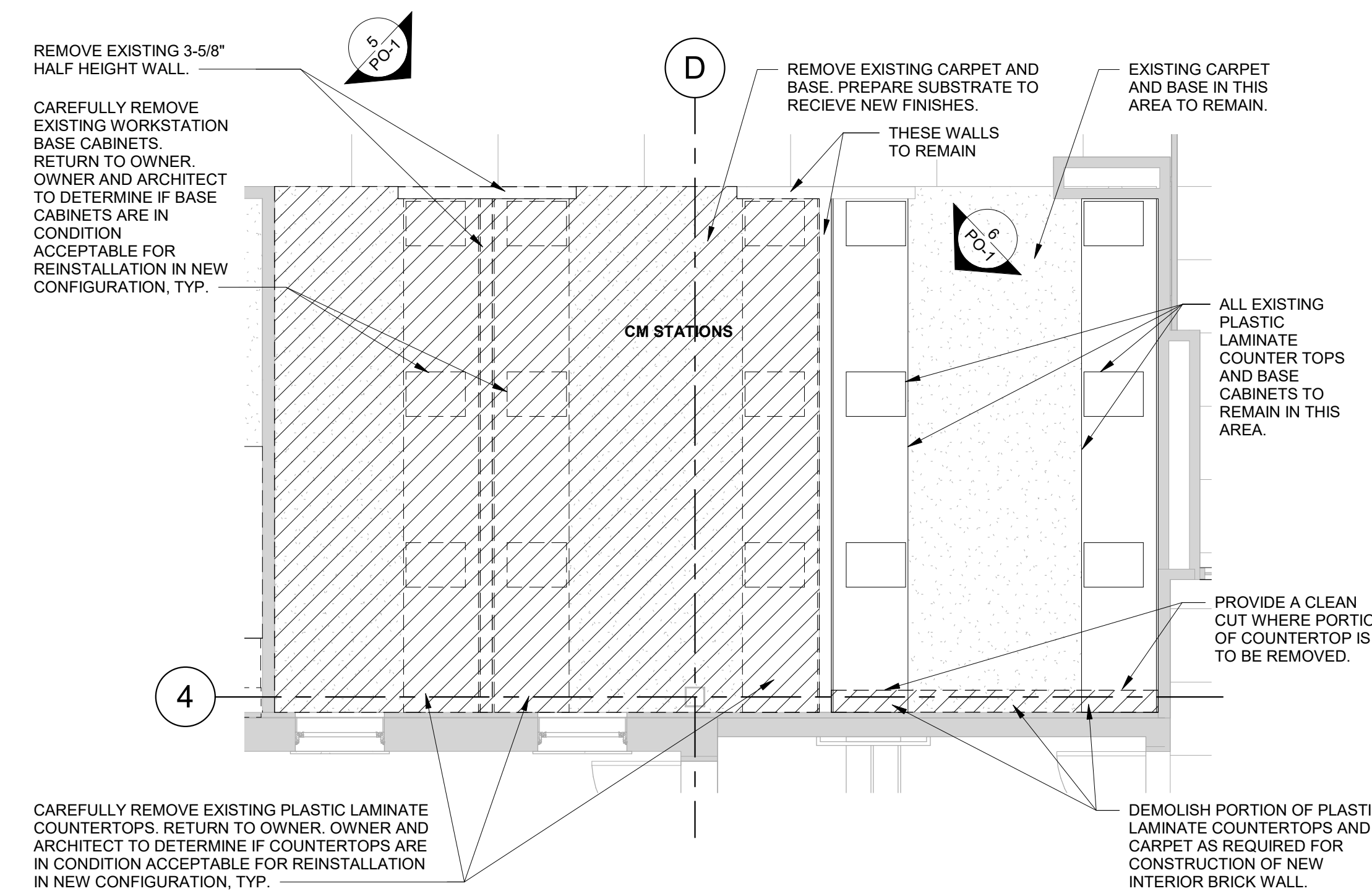
2
PO-1
REFERENCE 3D VIEW 2



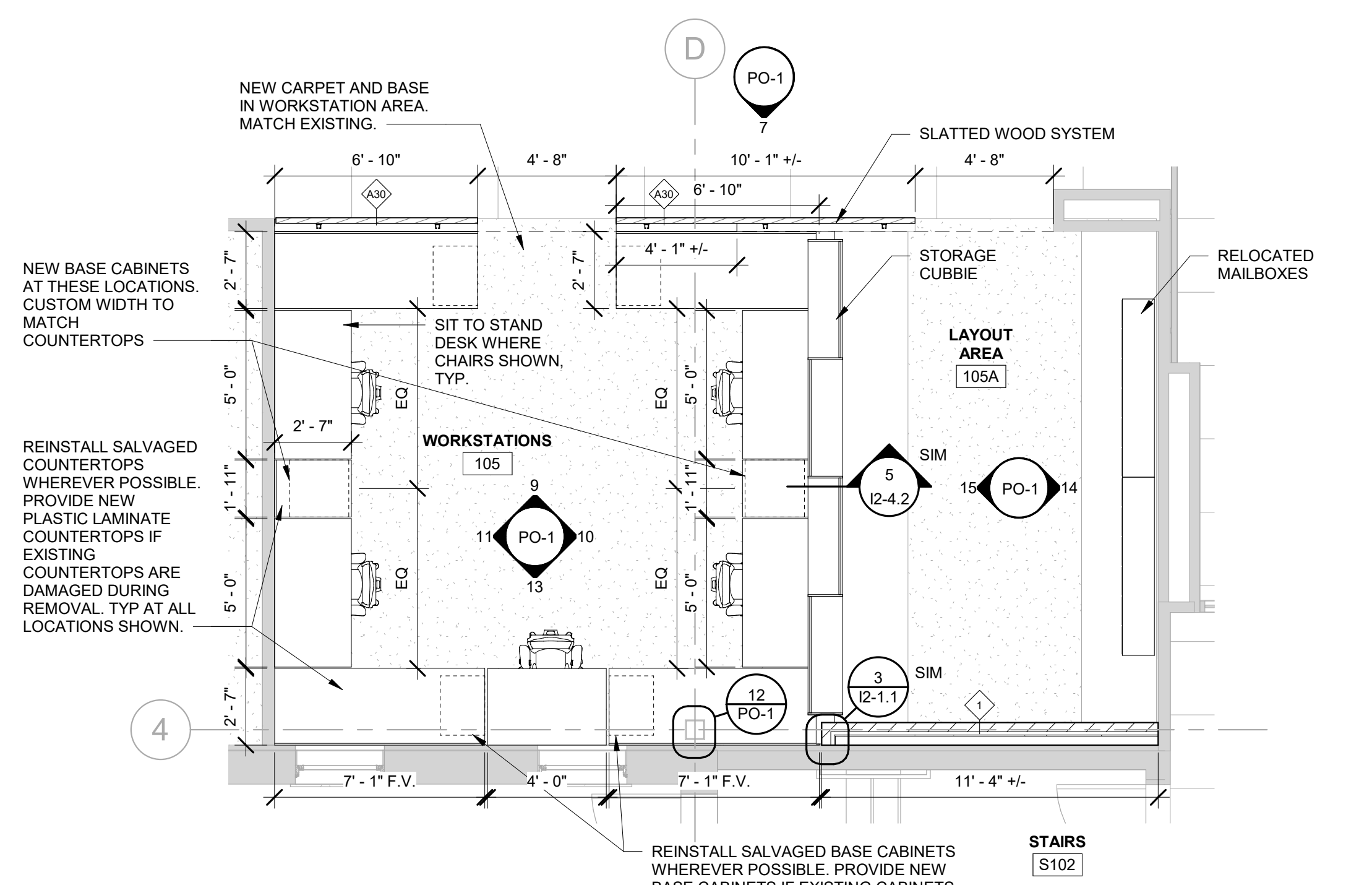
8
PO-1
REFERENCE 3D VIEW - DETAIL AT BRICK WALL AND CUBBIE



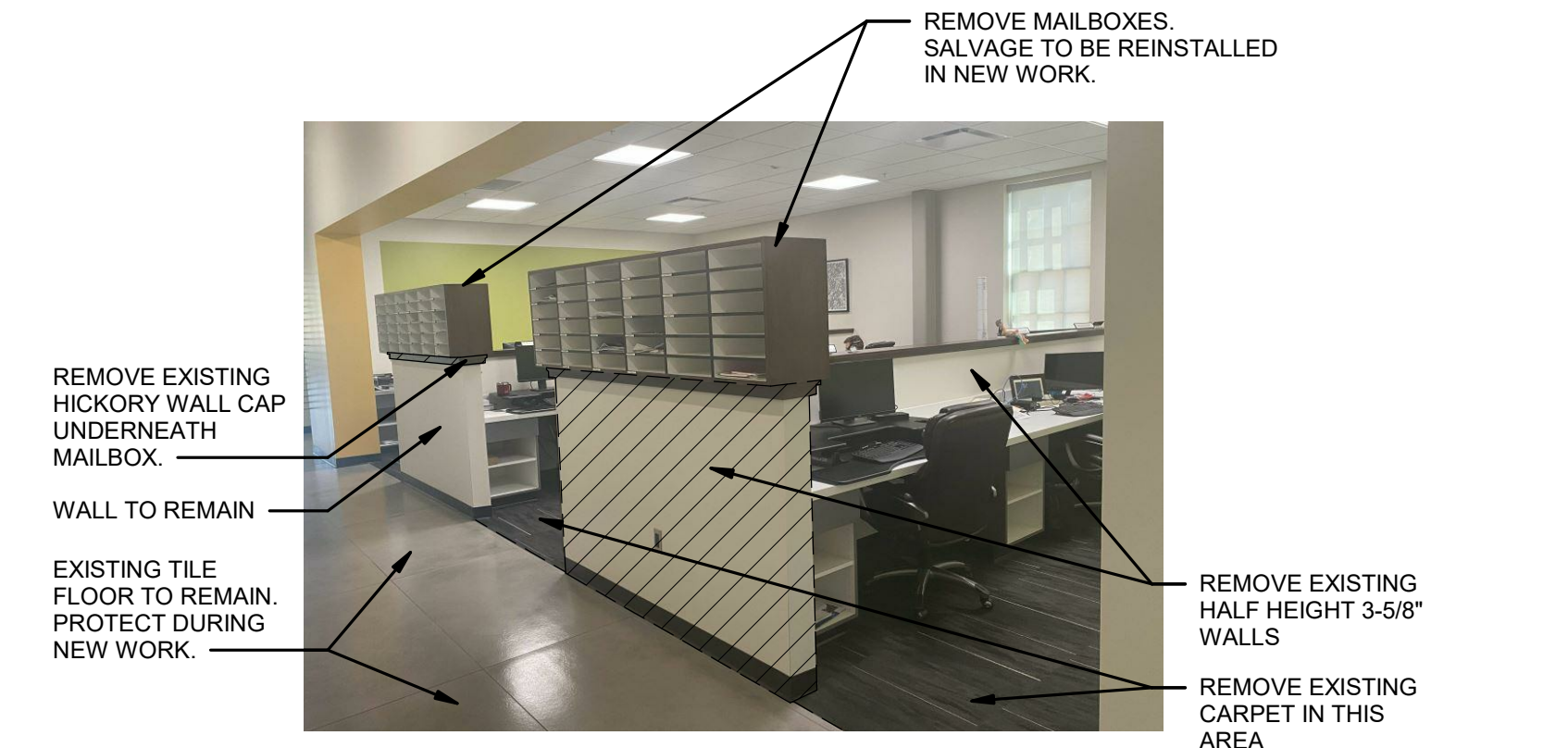
12
PO-1
CM STATION MODIFICATION - COLUMN DETAIL
1 1/2" = 1'-0"



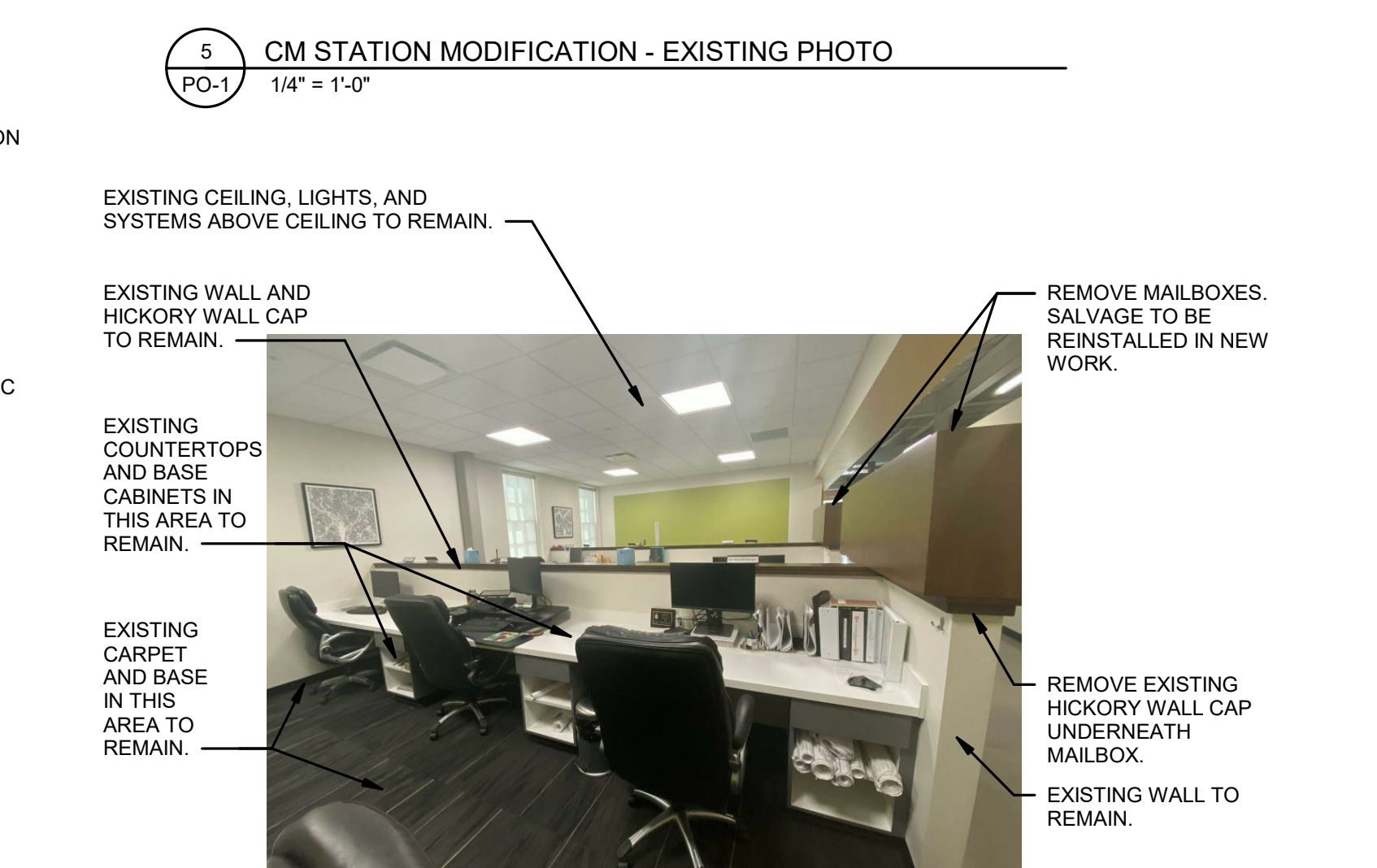
3
PO-1
CM STATION MODIFICATION - DEMOLITION PLAN
1/4" = 1'-0"



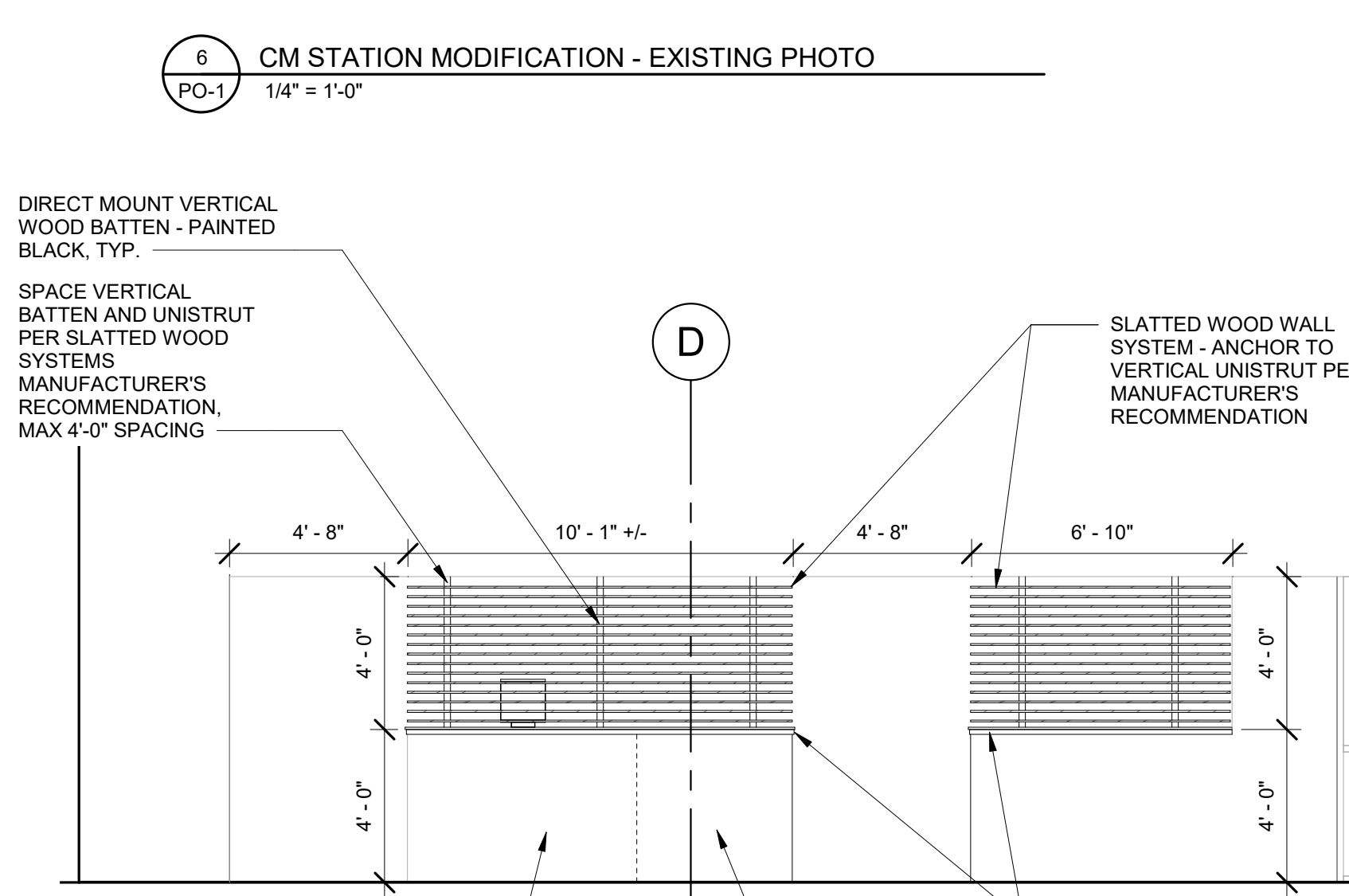
4
PO-1
CM STATION MODIFICATION - FLOOR PLAN
1/4" = 1'-0"



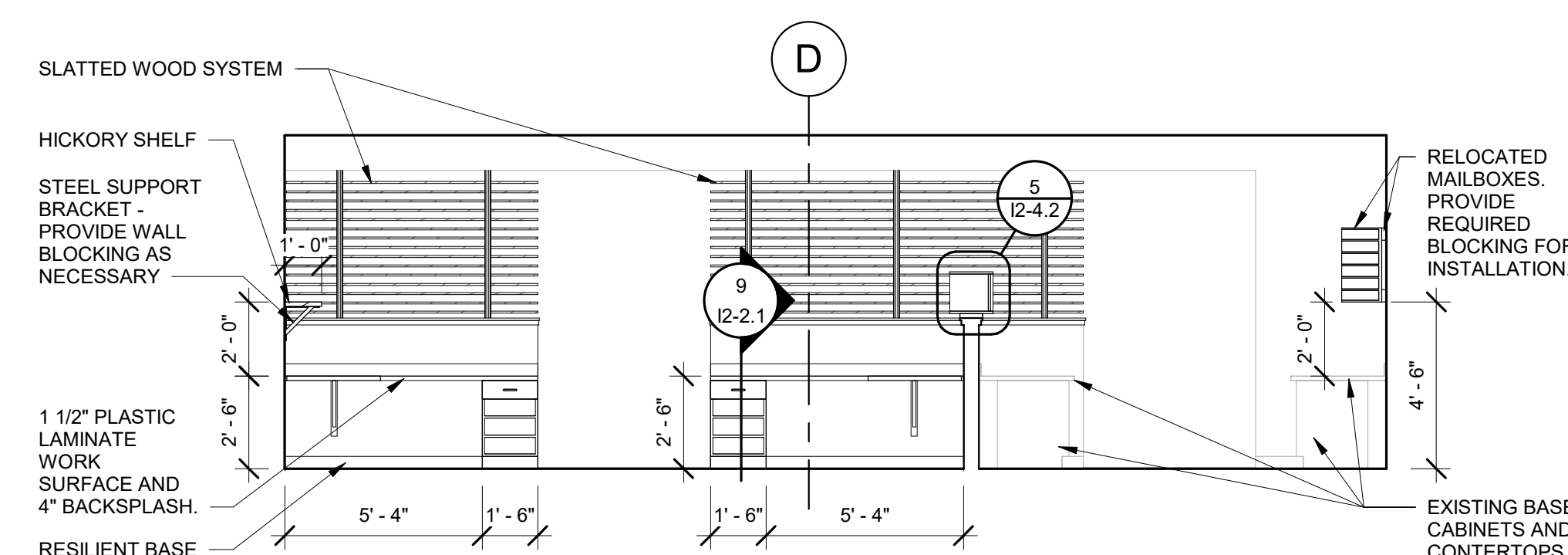
5
PO-1
CM STATION MODIFICATION - EXISTING PHOTO
1/4" = 1'-0"



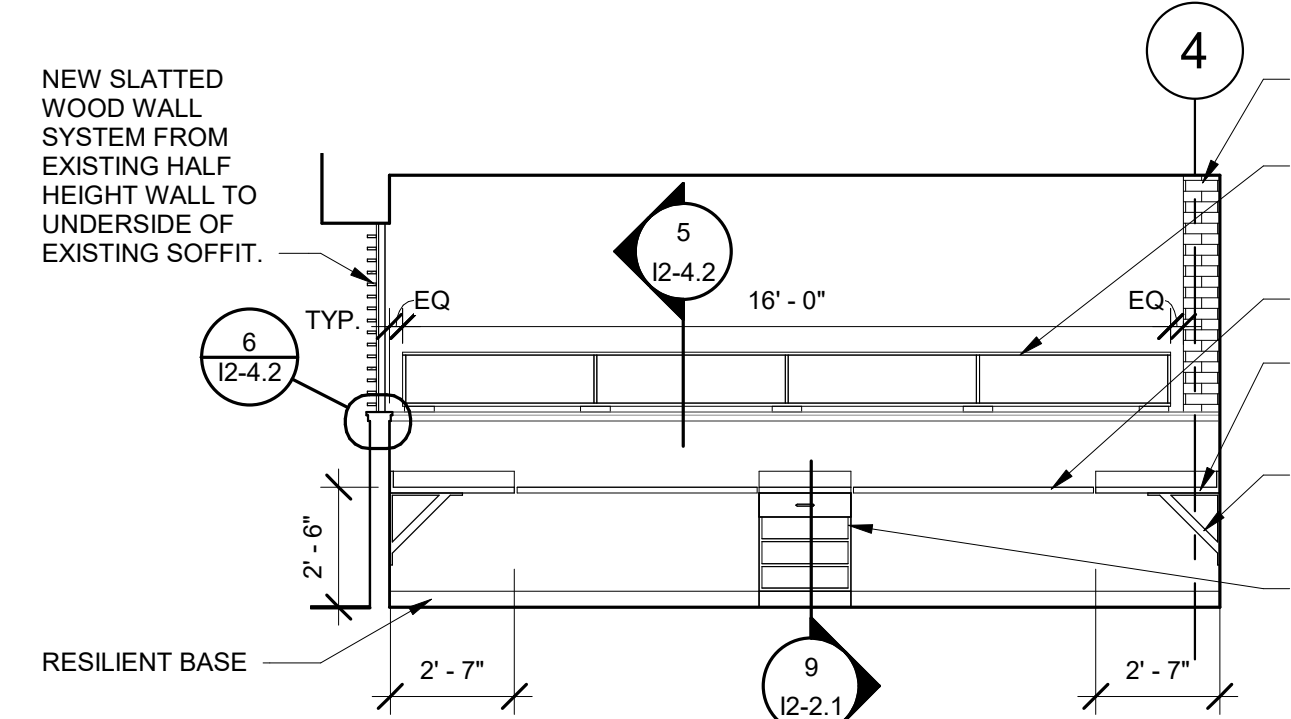
6
PO-1
CM STATION MODIFICATION - EXISTING PHOTO
1/4" = 1'-0"



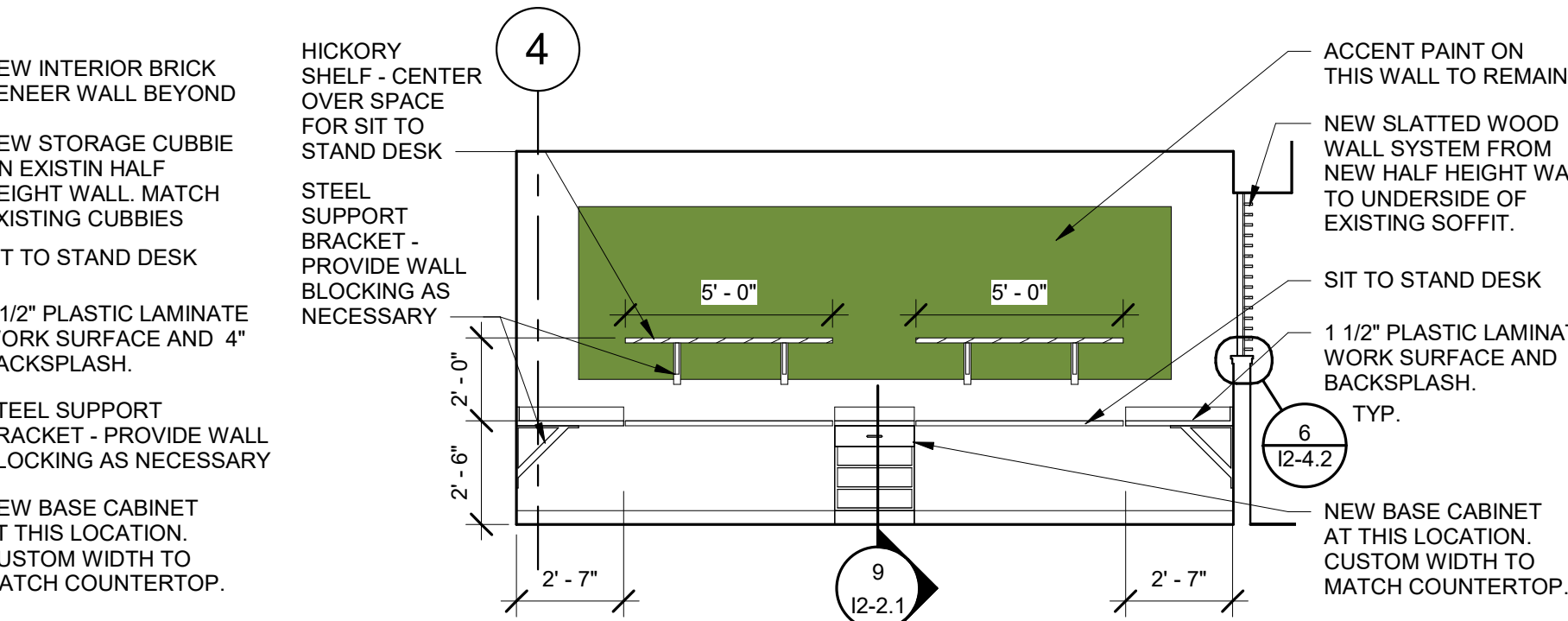
7
PO-1
CM STATION MODIFICATION - SLATTED WOOD WALL SYSTEM
1/4" = 1'-0"



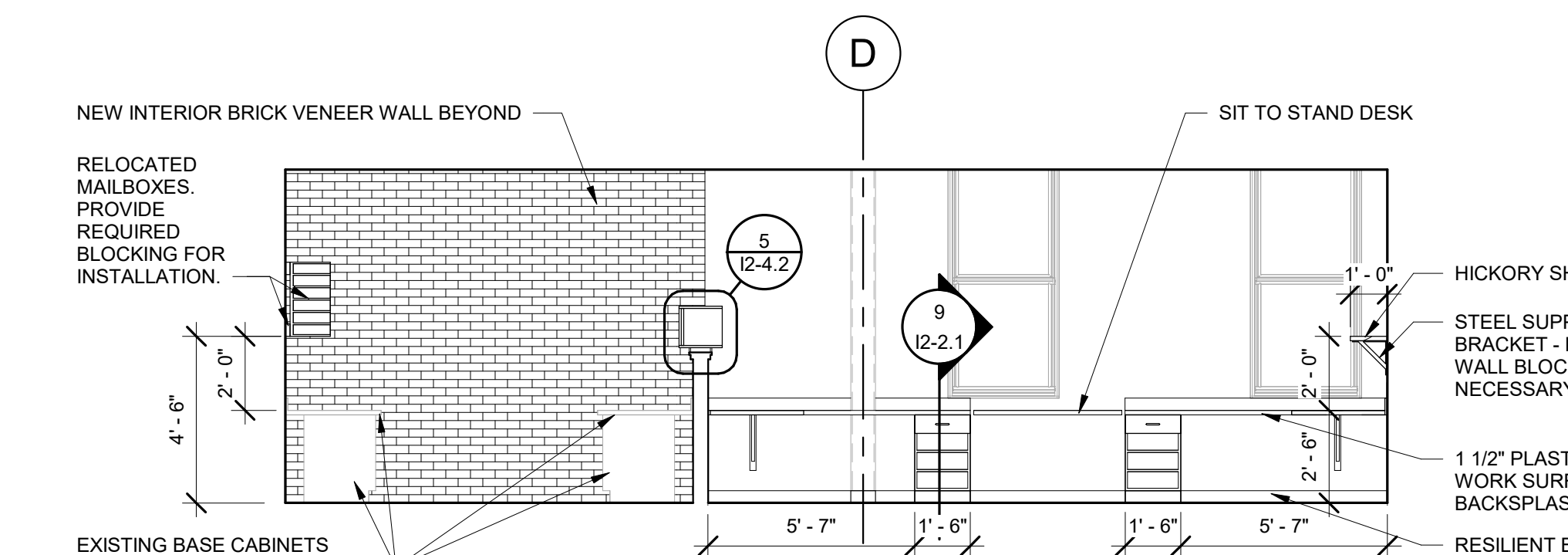
9
PO-1
CM STATION MODIFICATION - INTERIOR ELEVATION
1/4" = 1'-0"



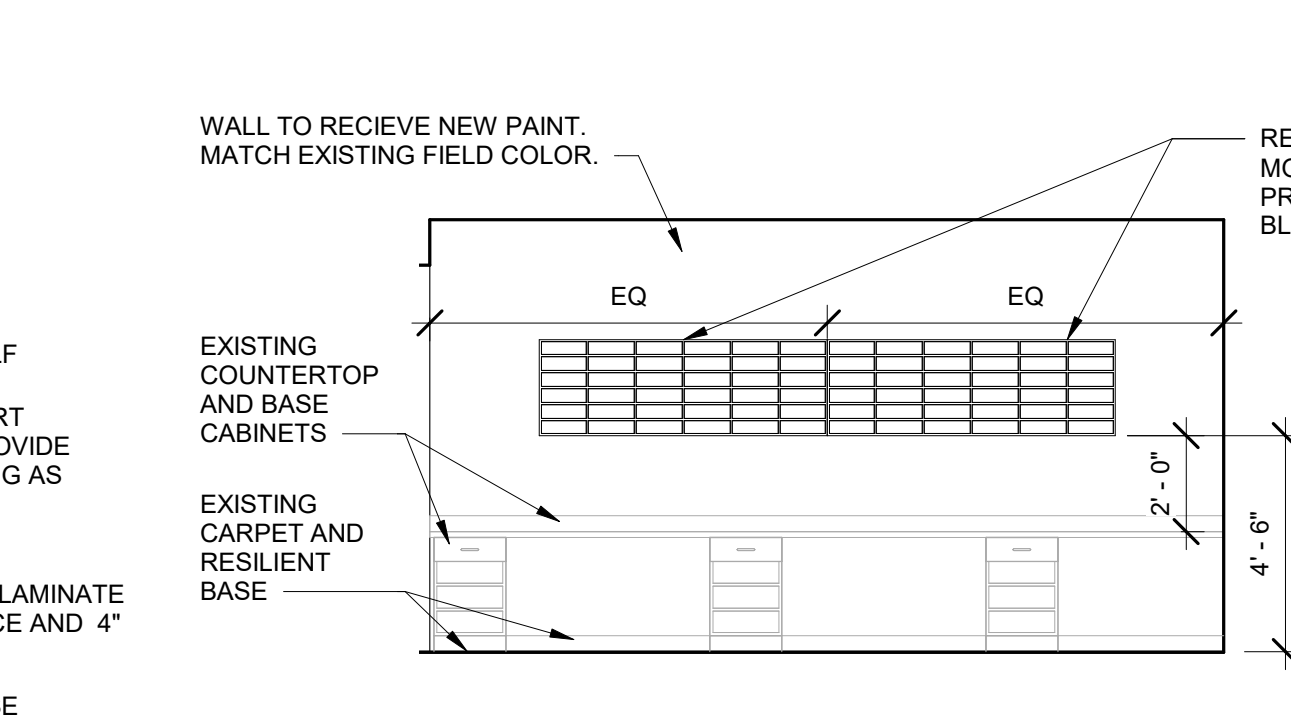
10
PO-1
CM STATION MODIFICATION - INTERIOR ELEVATION
1/4" = 1'-0"



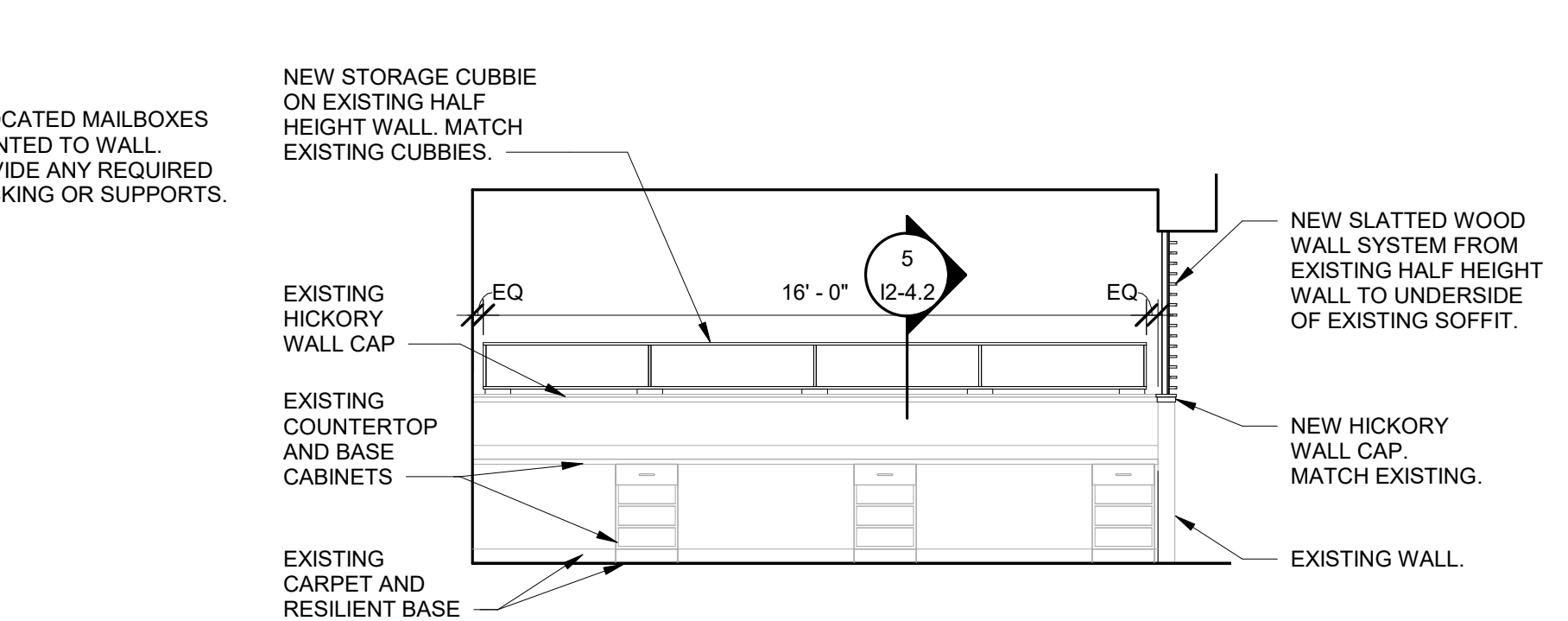
11
PO-1
CM STATION MODIFICATION - INTERIOR ELEVATION
1/4" = 1'-0"



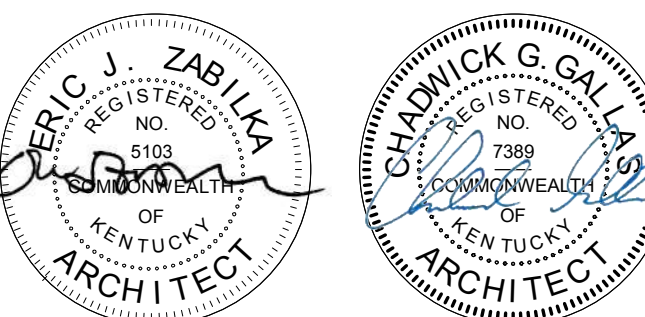
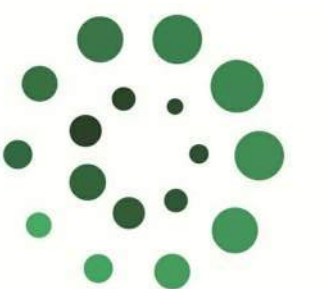
13
PO-1
CM STATION MODIFICATION - INTERIOR ELEVATION
1/4" = 1'-0"



14
PO-1
CM STATION MODIFICATION - INTERIOR ELEVATION
1/4" = 1'-0"



15
PO-1
CM STATION MODIFICATION - INTERIOR ELEVATION
1/4" = 1'-0"



© This Drawing and the Design shown thereon are the property of Omni Architects. The reproduction, copying, or other use of this Drawing or Design without the written consent of Omni Architects is prohibited.

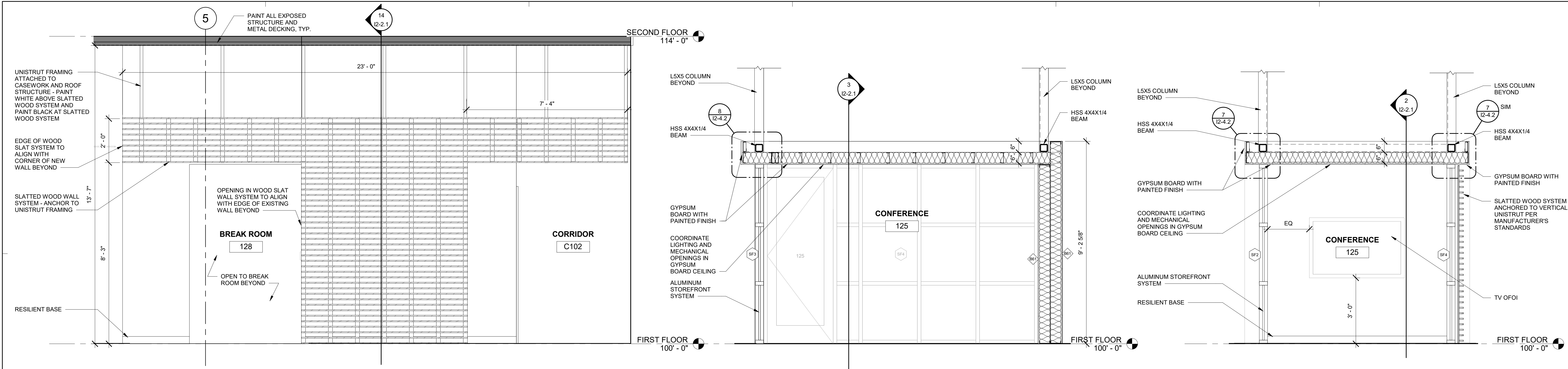
PROJECT NUMBER **1921**

DATE **JULY 1, 2020**

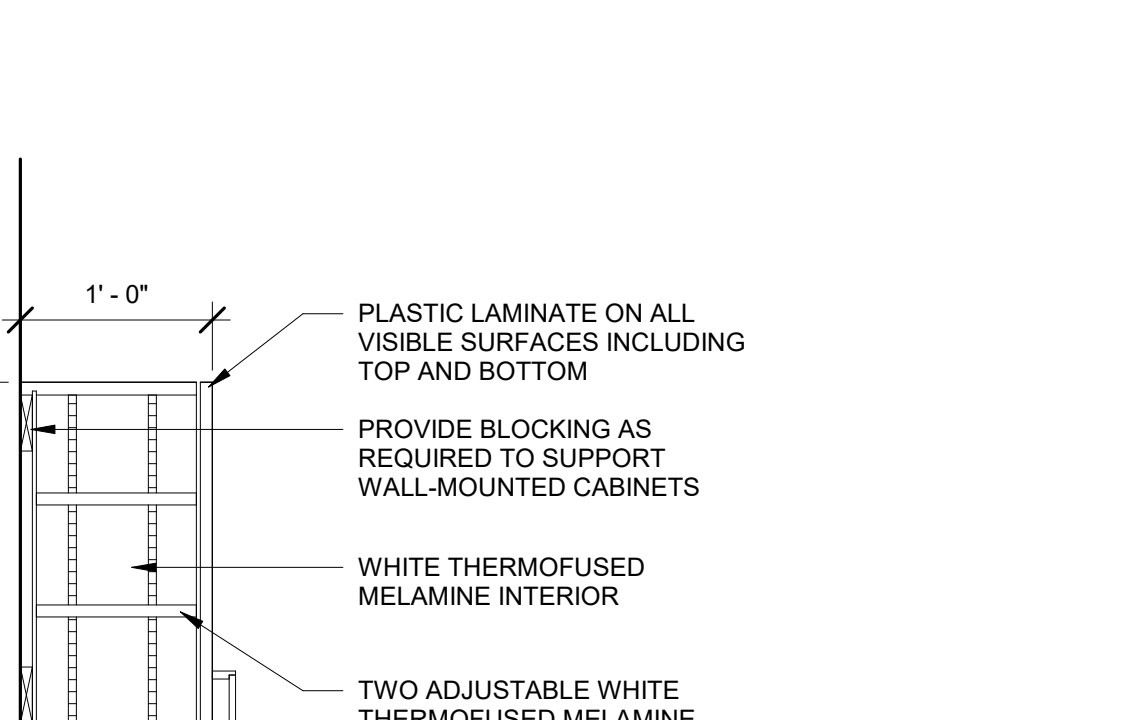
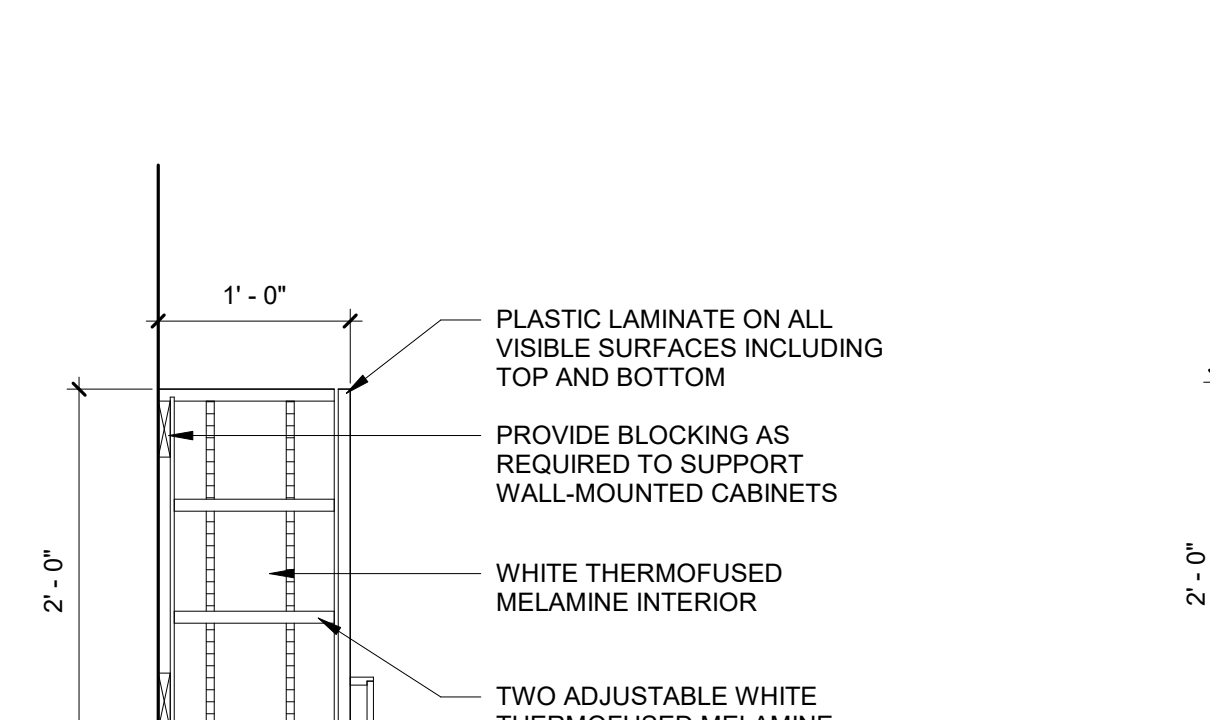
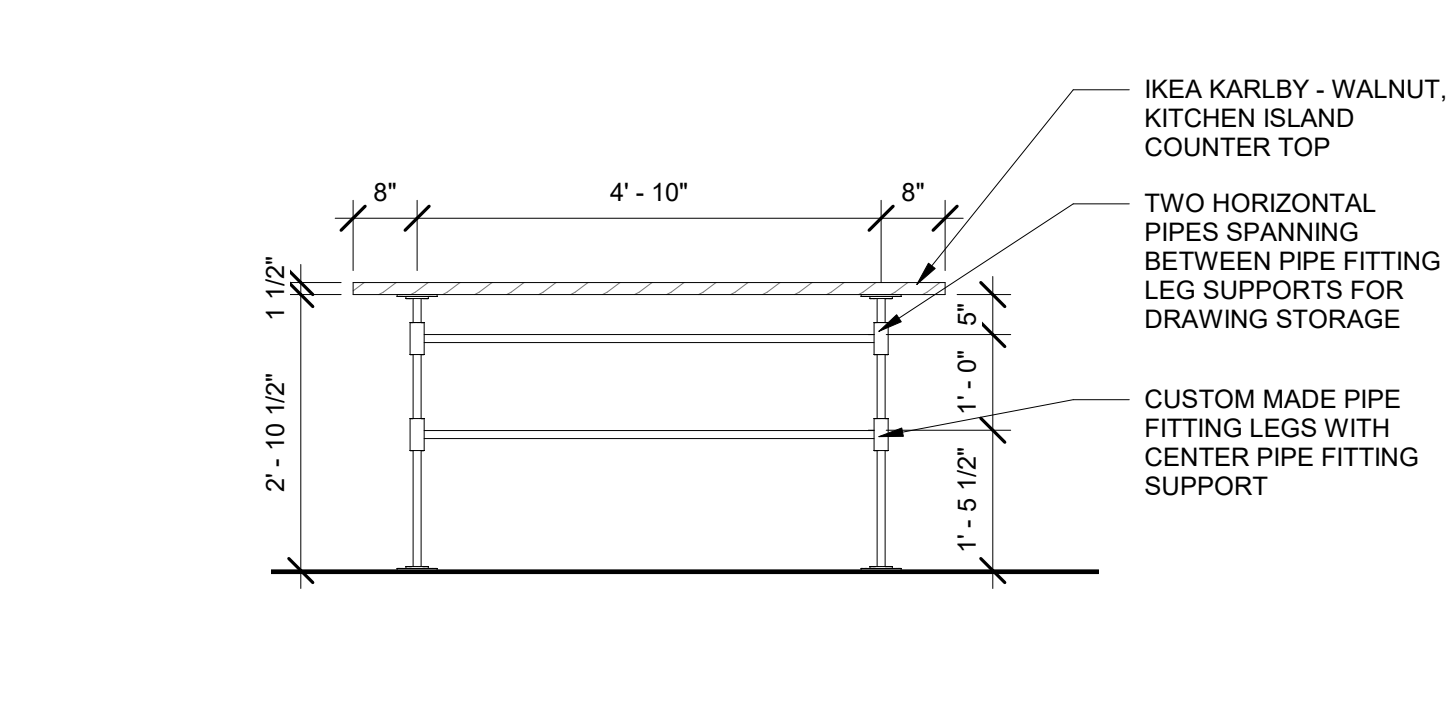
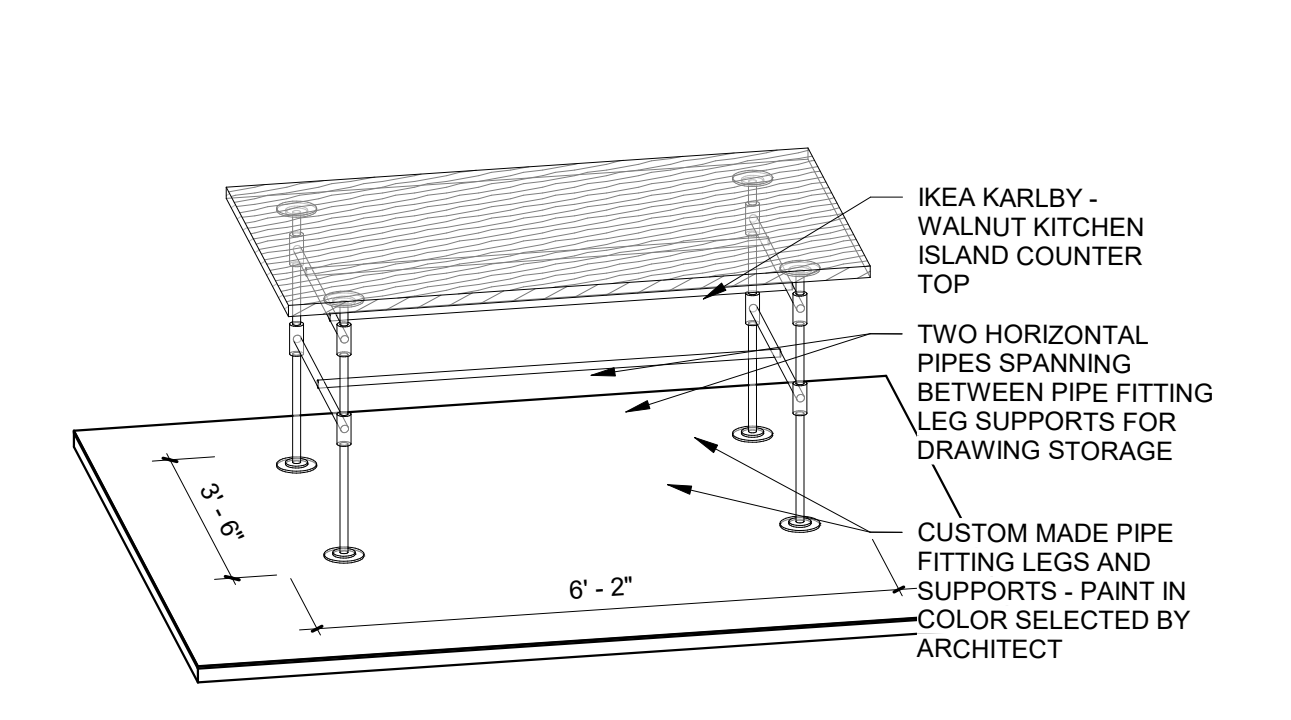
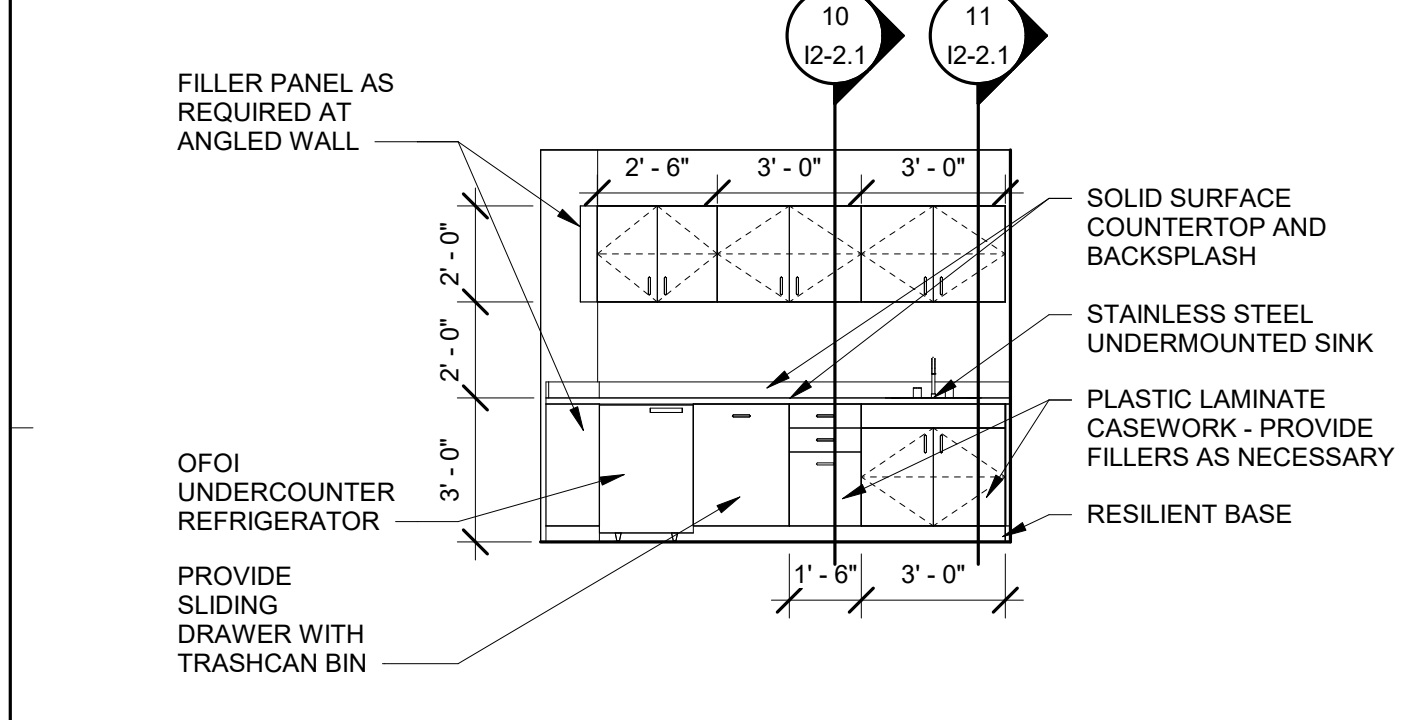
REVISIONS

INTERIOR ELEVATIONS AND CASEWORK DETAILS

12-2.1



1 ELEVATION @ SLATTED WOOD WALL 1/2" = 1'-0"
2 SECTION @ CONFERENCE ROOM 1/2" = 1'-0"
3 SECTION @ CONFERENCE ROOM 1/2" = 1'-0"



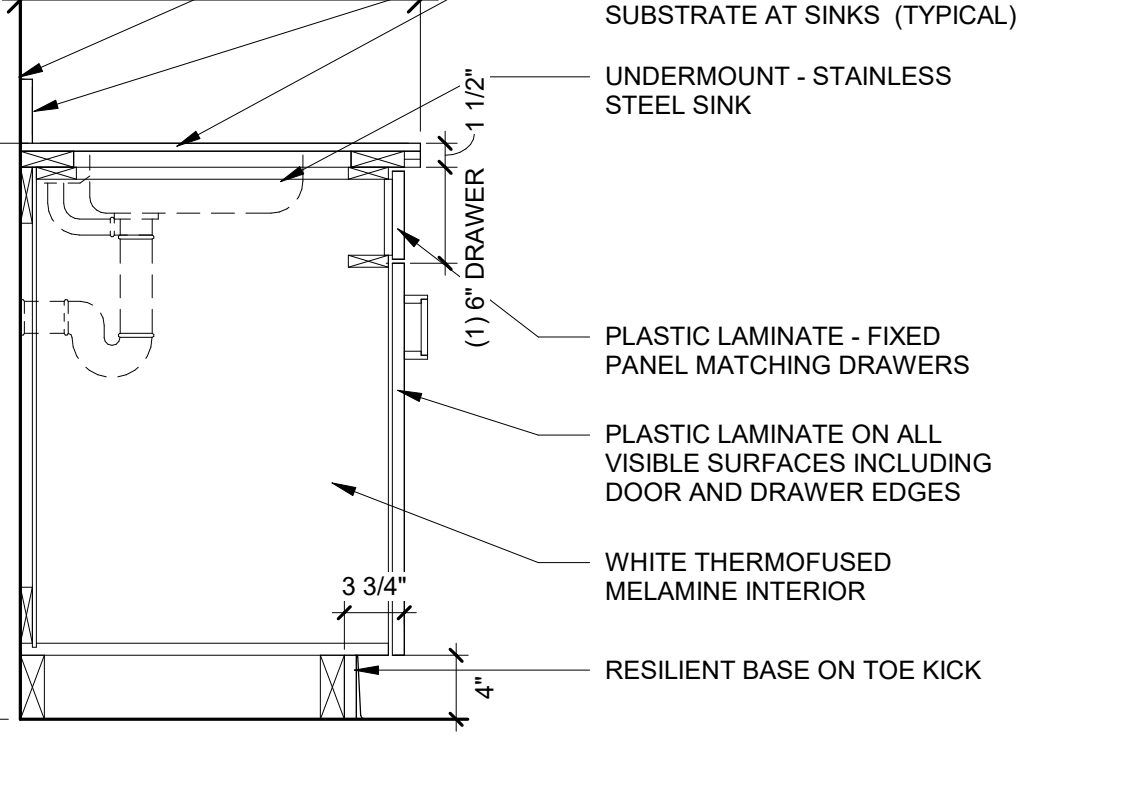
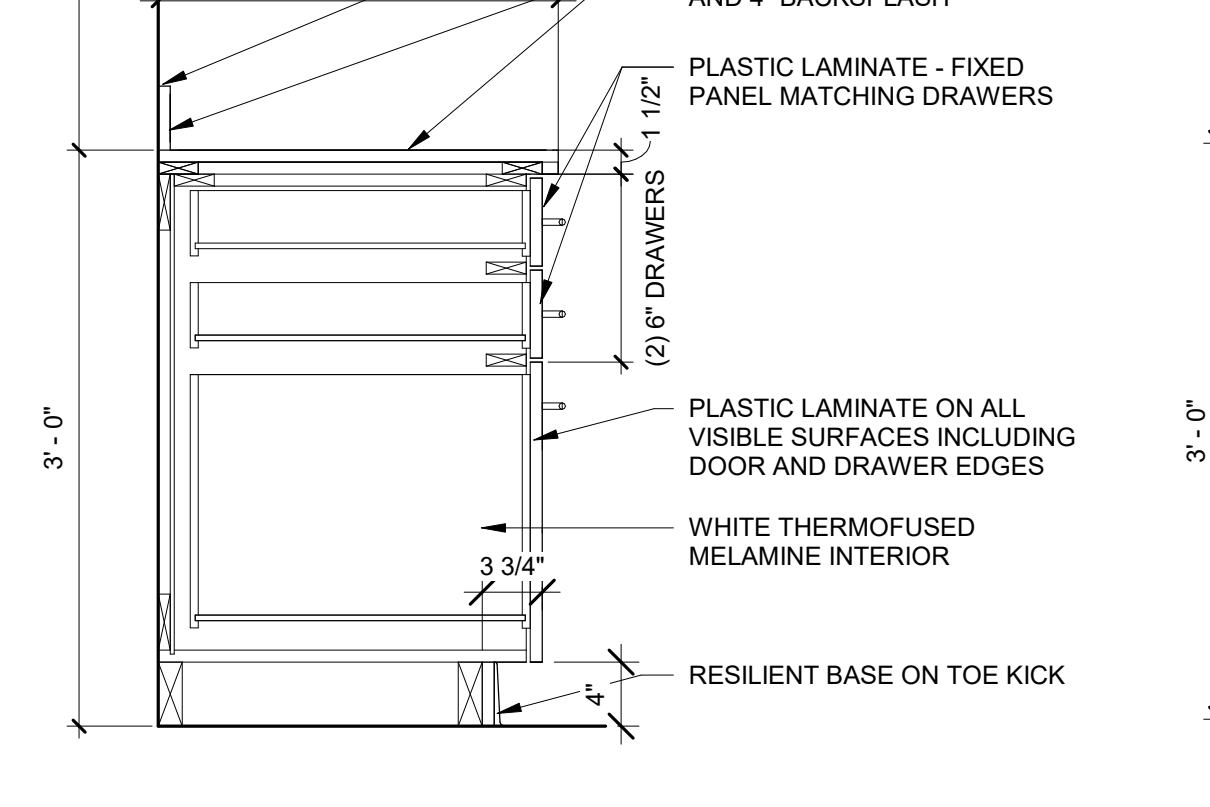
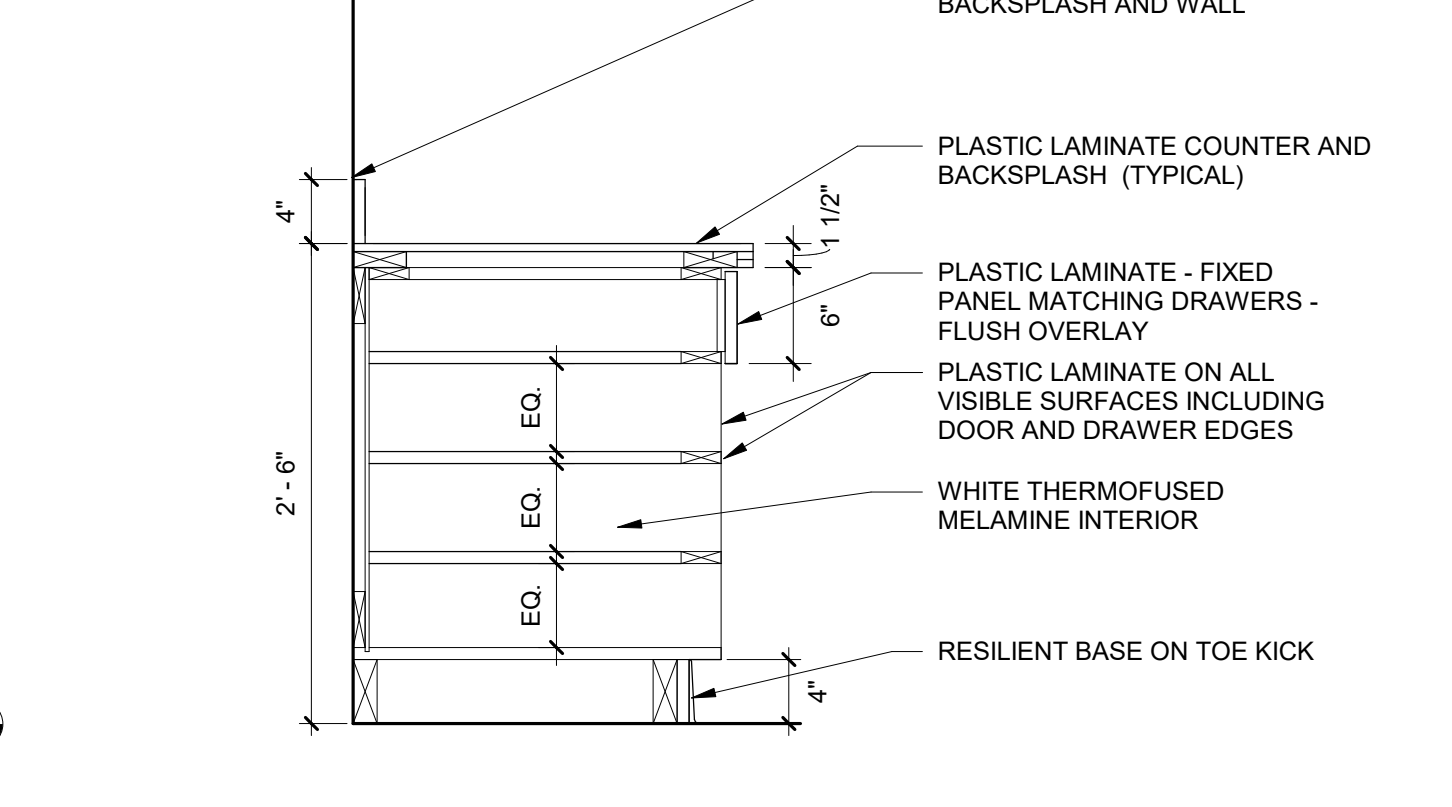
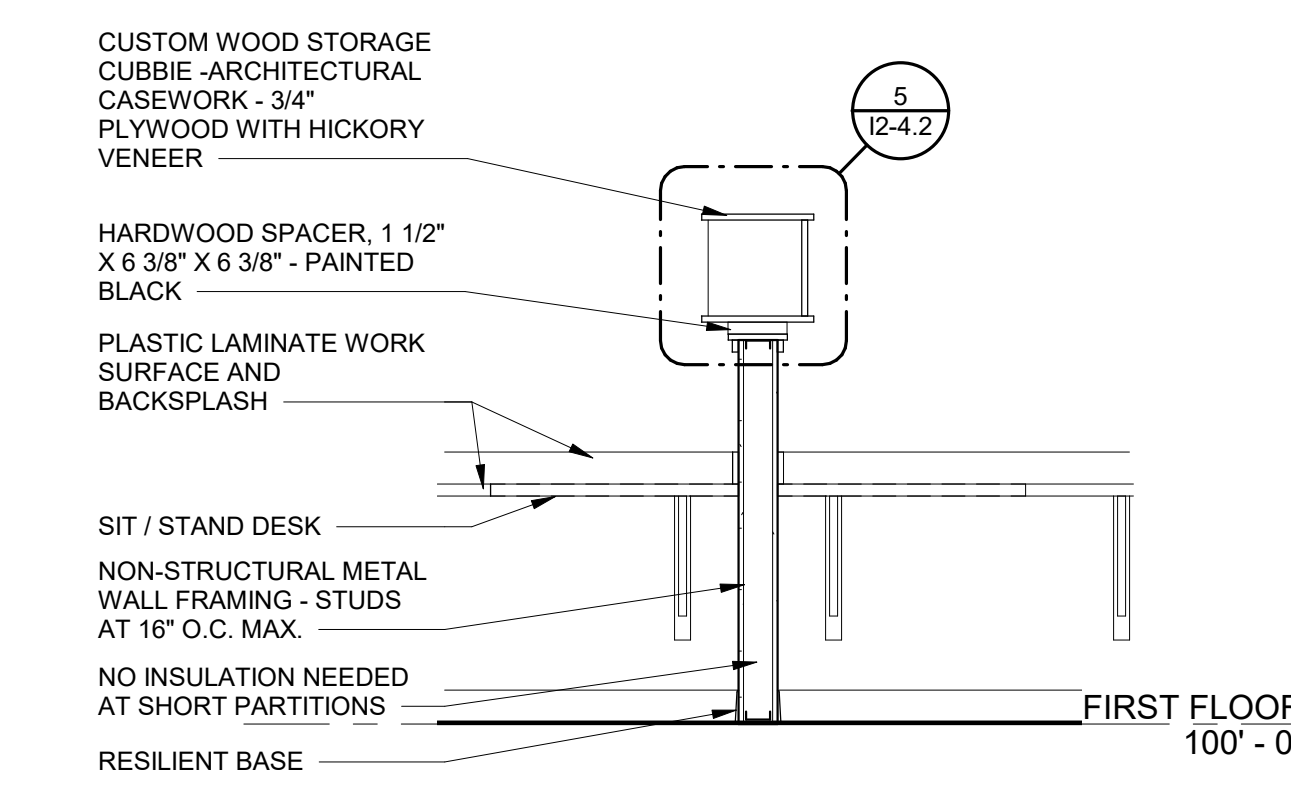
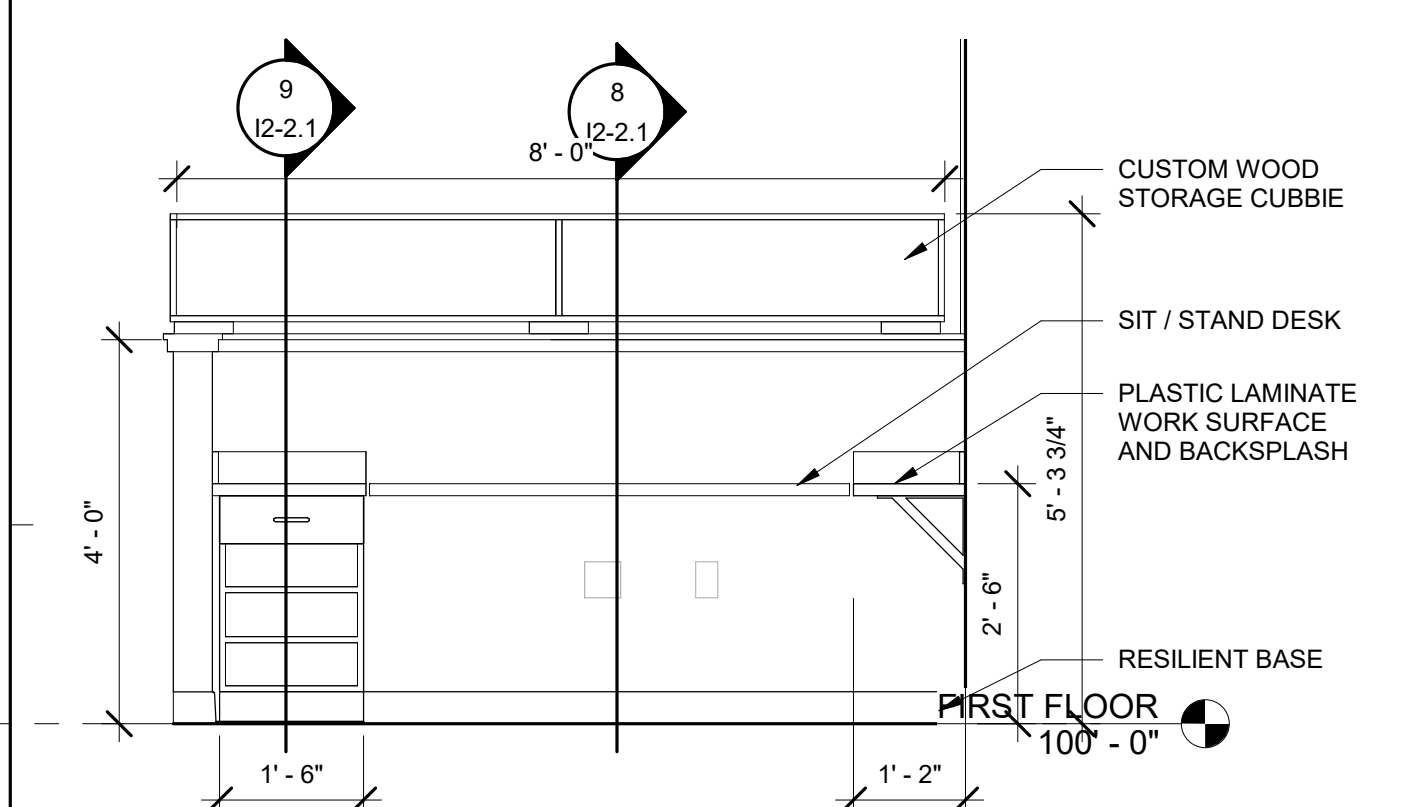
4 CASEWORK ELEVATION @ BREAK ROOM 1/4" = 1'-0"

5 3D CENTER TABLES 1/2" = 1'-0"

6 ELEVATION @ CENTER TABLES 1/2" = 1'-0"

7 SECTION @ BREAKROOM CASEWORK 1" = 1'-0"

8 SECTION @ BREAKROOM SINK 1" = 1'-0"



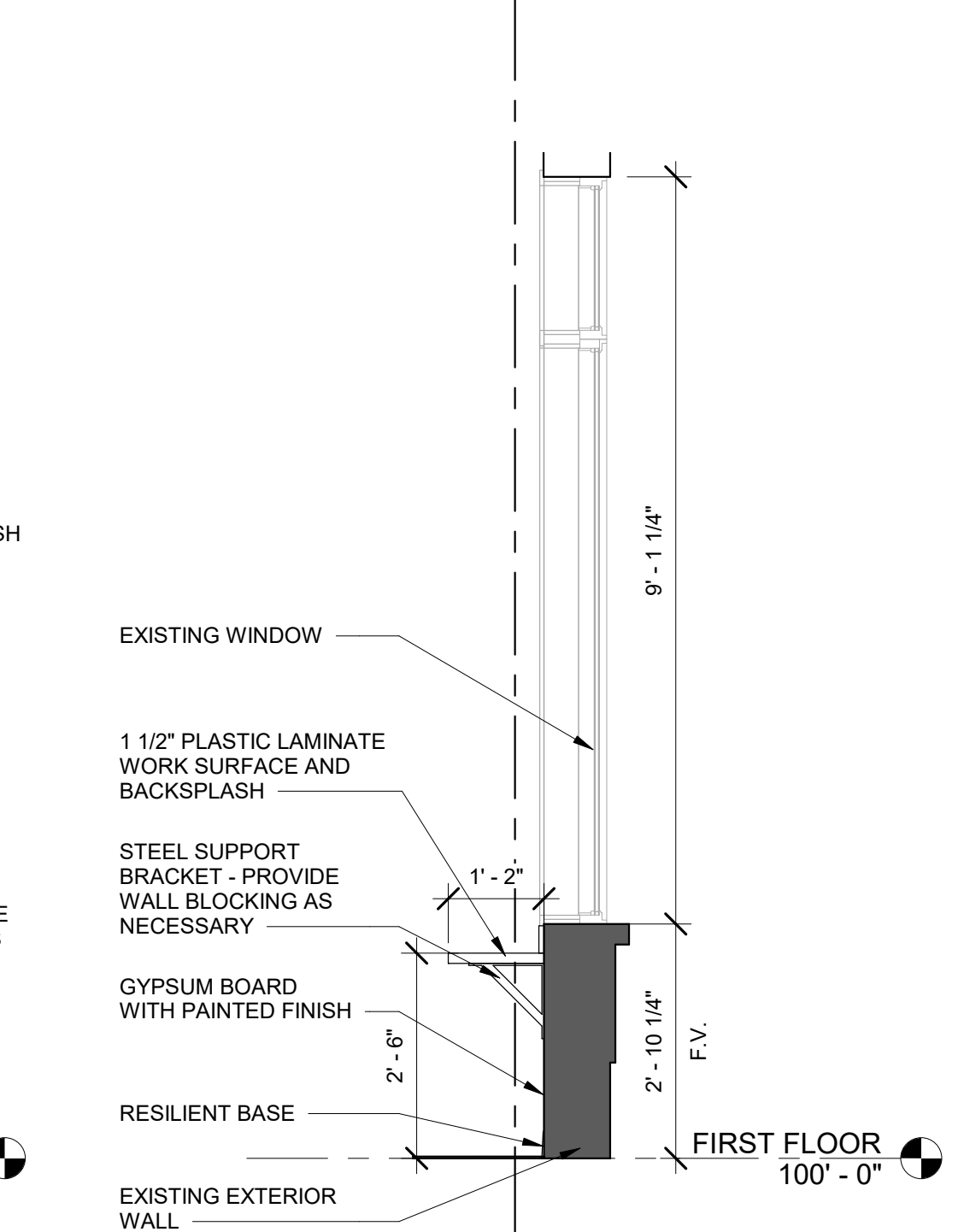
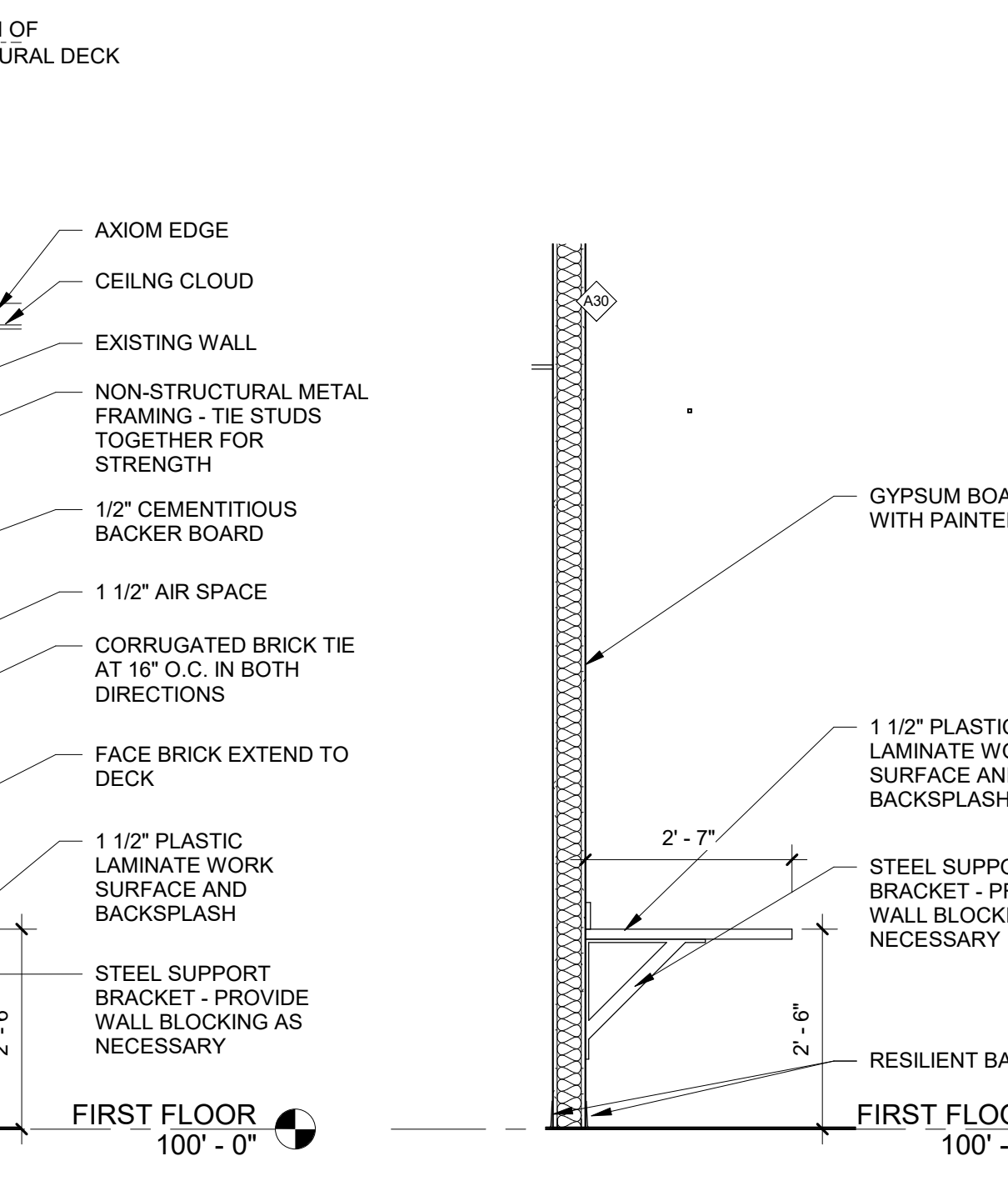
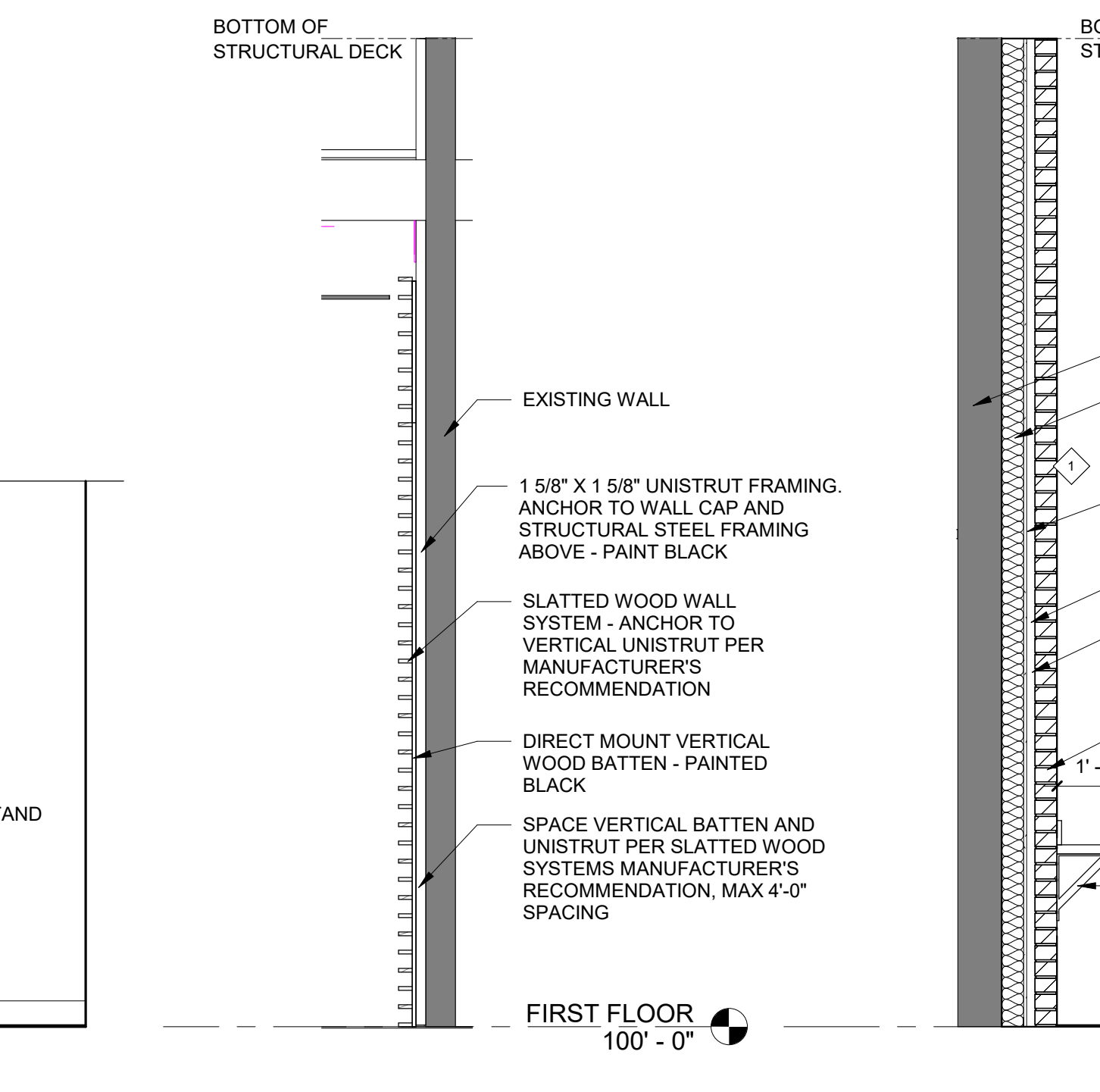
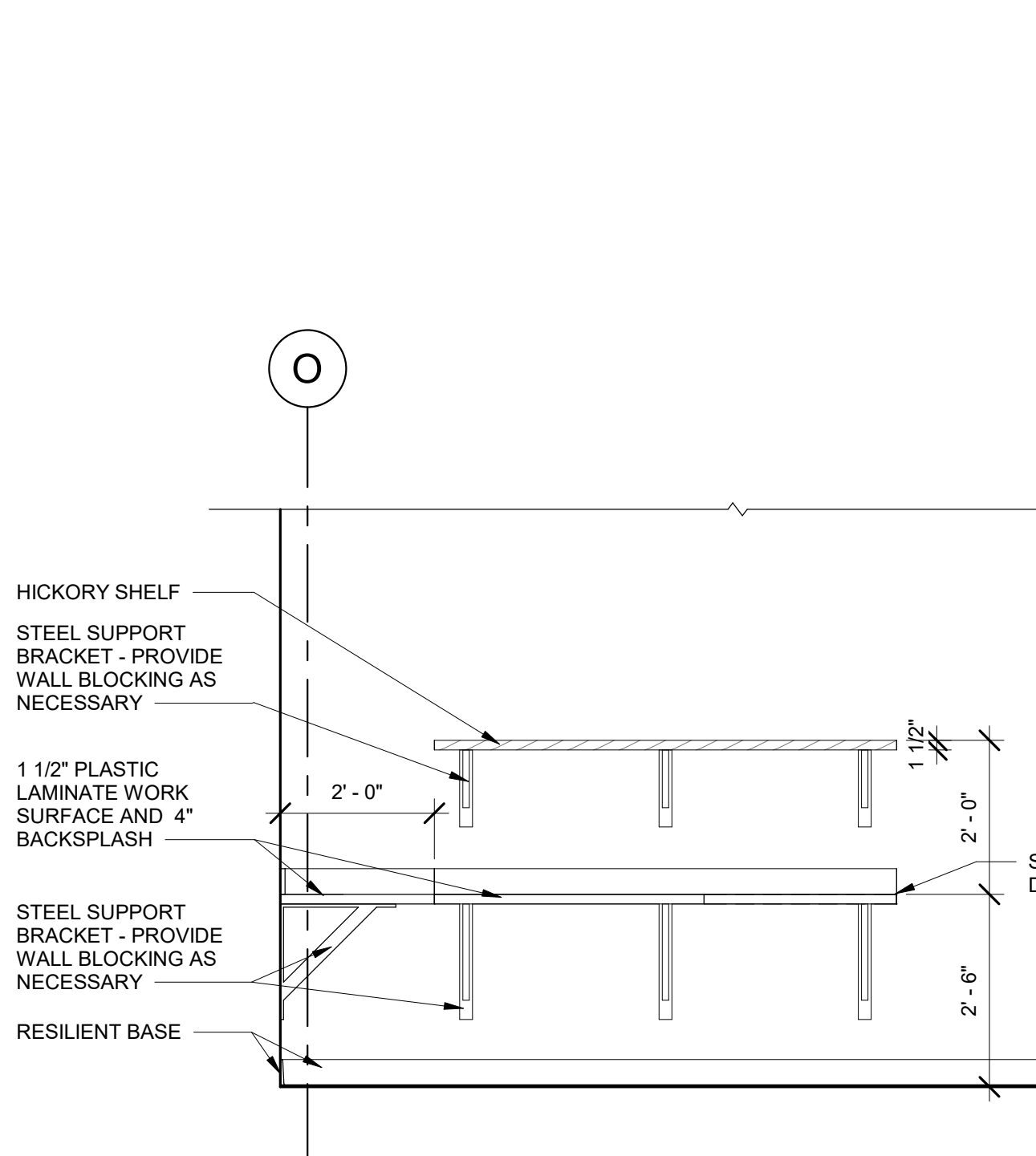
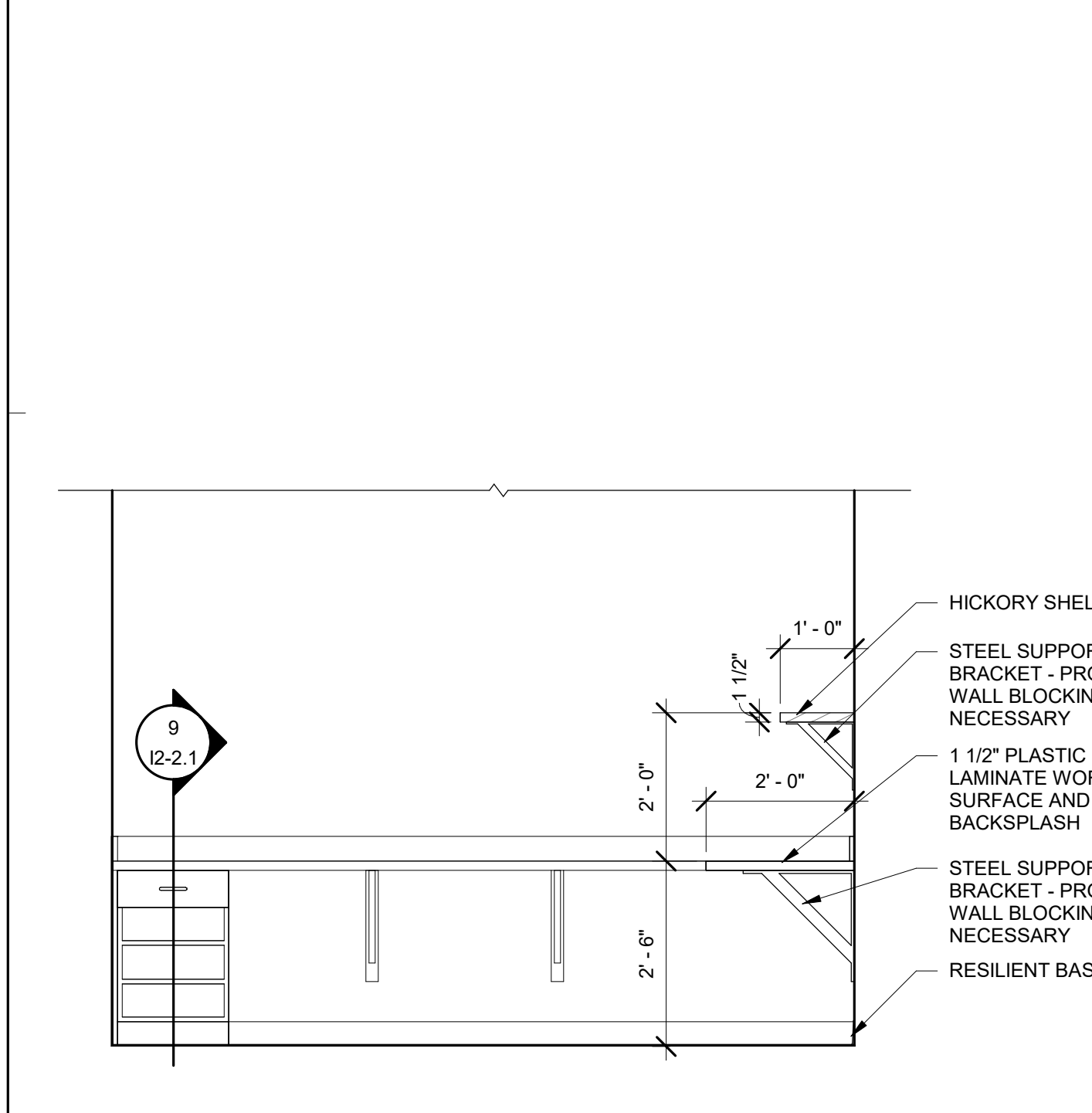
7 ELEVATION @ WORK SPACE 1/2" = 1'-0"

8 SECTION @ WORK SPACE PARTITION 1/2" = 1'-0"

9 SECTION @ TYPICAL DESK BUILT IN 1" = 1'-0"

10 SECTION @ BREAKROOM CASEWORK 1" = 1'-0"

11 SECTION @ BREAKROOM SINK 1" = 1'-0"



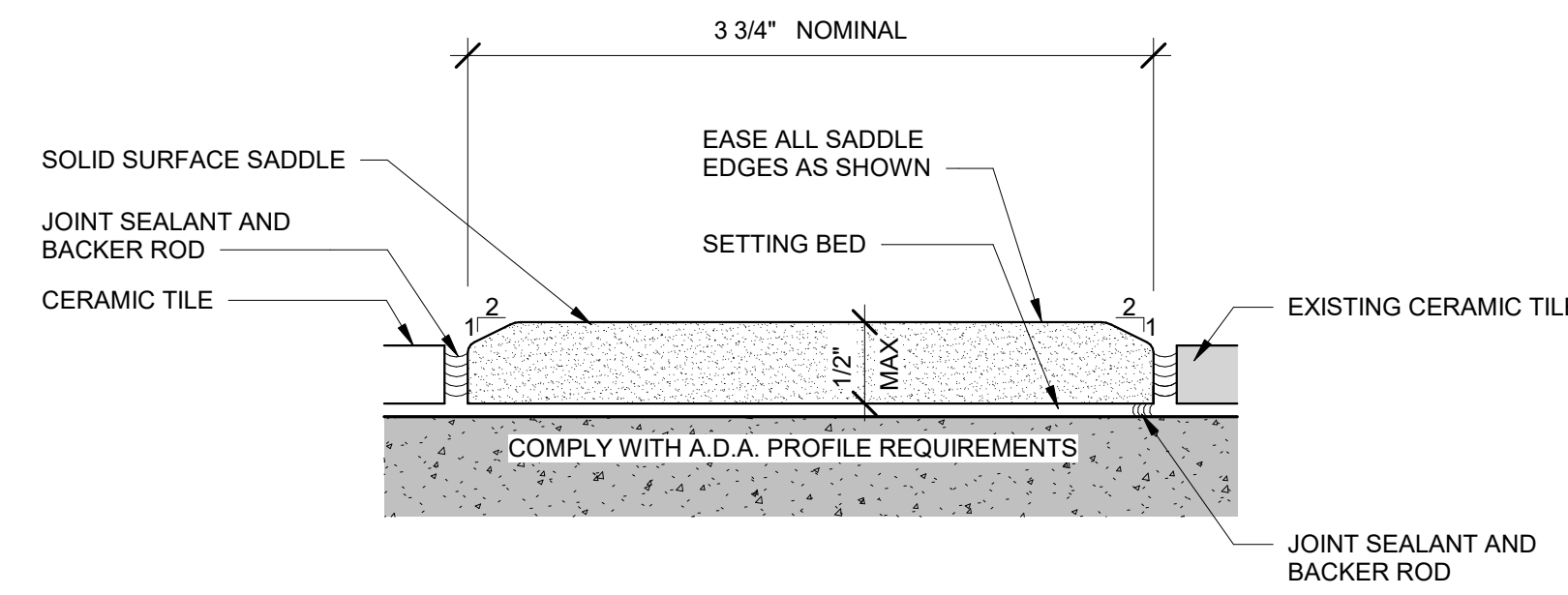
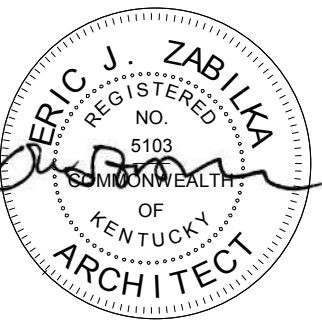
12 TYPICAL INTERIOR ELEVATION @ CLOSED OFFICE 1/2" = 1'-0"

13 TYPICAL INTERIOR ELEVATION @ CLOSED OFFICE 1/2" = 1'-0"

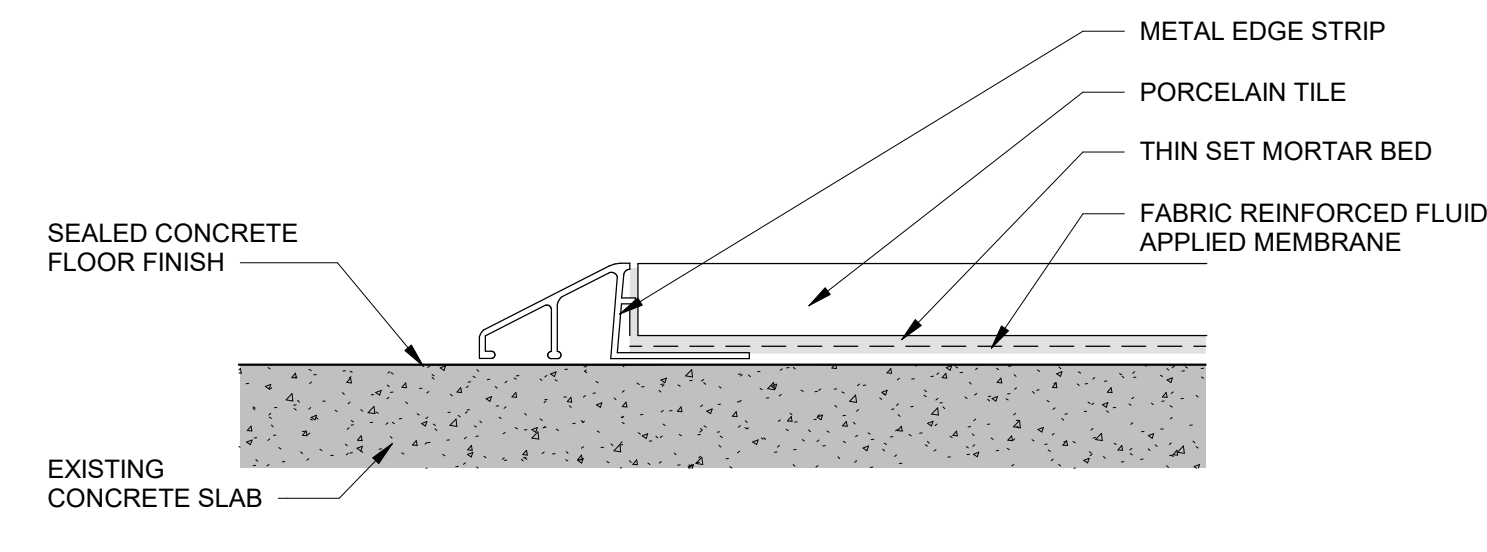
14 SECTION @ SLATTED WOOD SYSTEM 1/2" = 1'-0"

15 SECTION @ WORKSTATION AND BRICK WALL 1/2" = 1'-0"

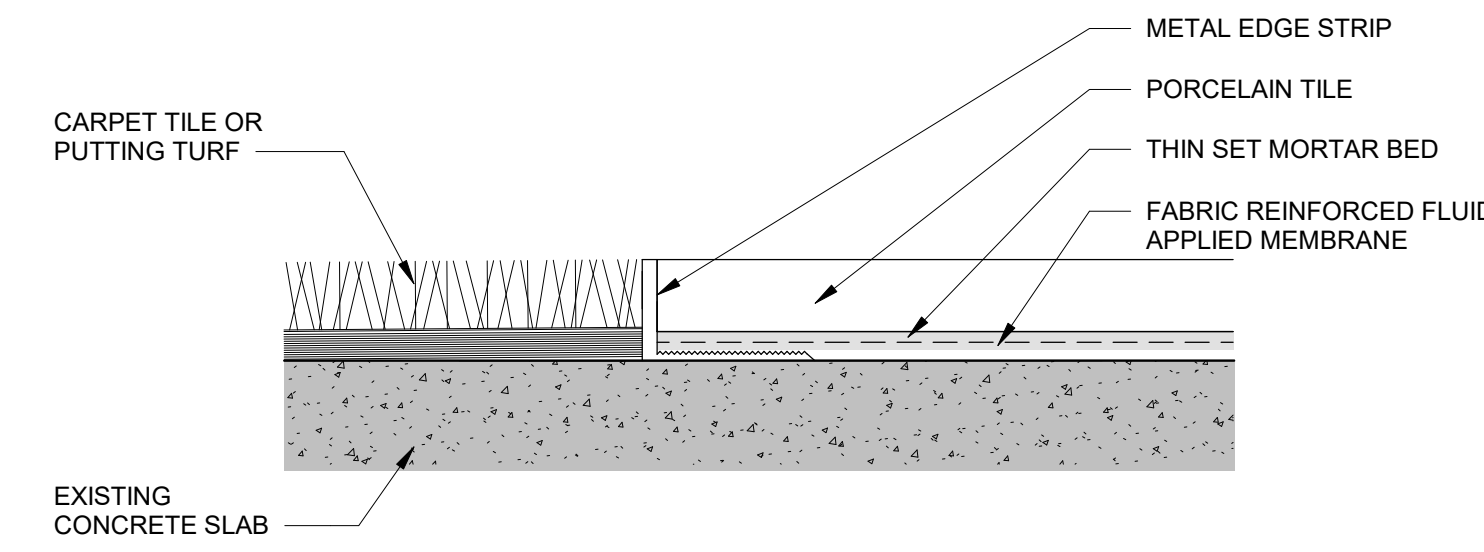
16 SECTION @ WORKSTATION AND WALL 1/2" = 1'-0"



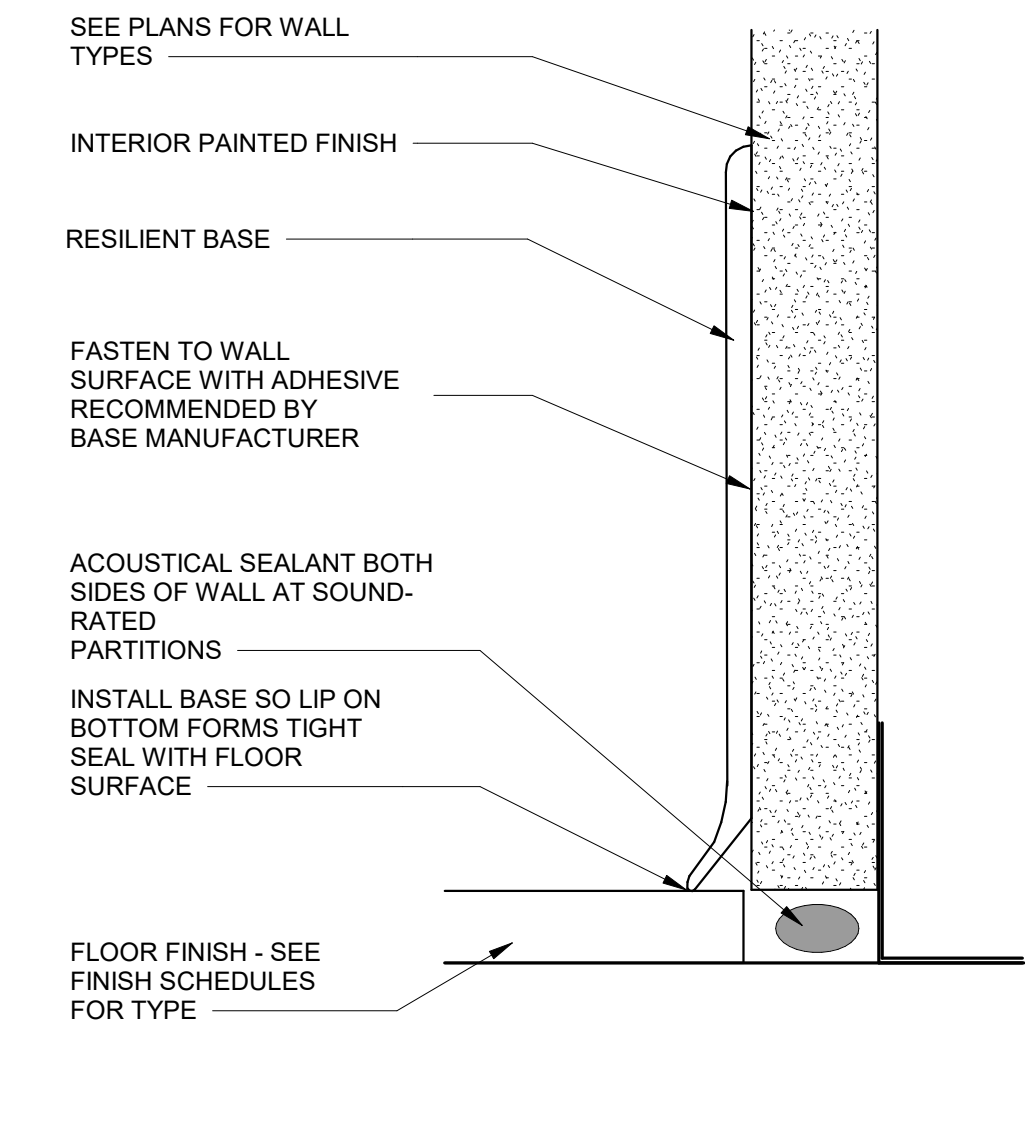
1 TYPICAL DETAIL @ SADDLE THRESHOLD
12" = 1'-0"



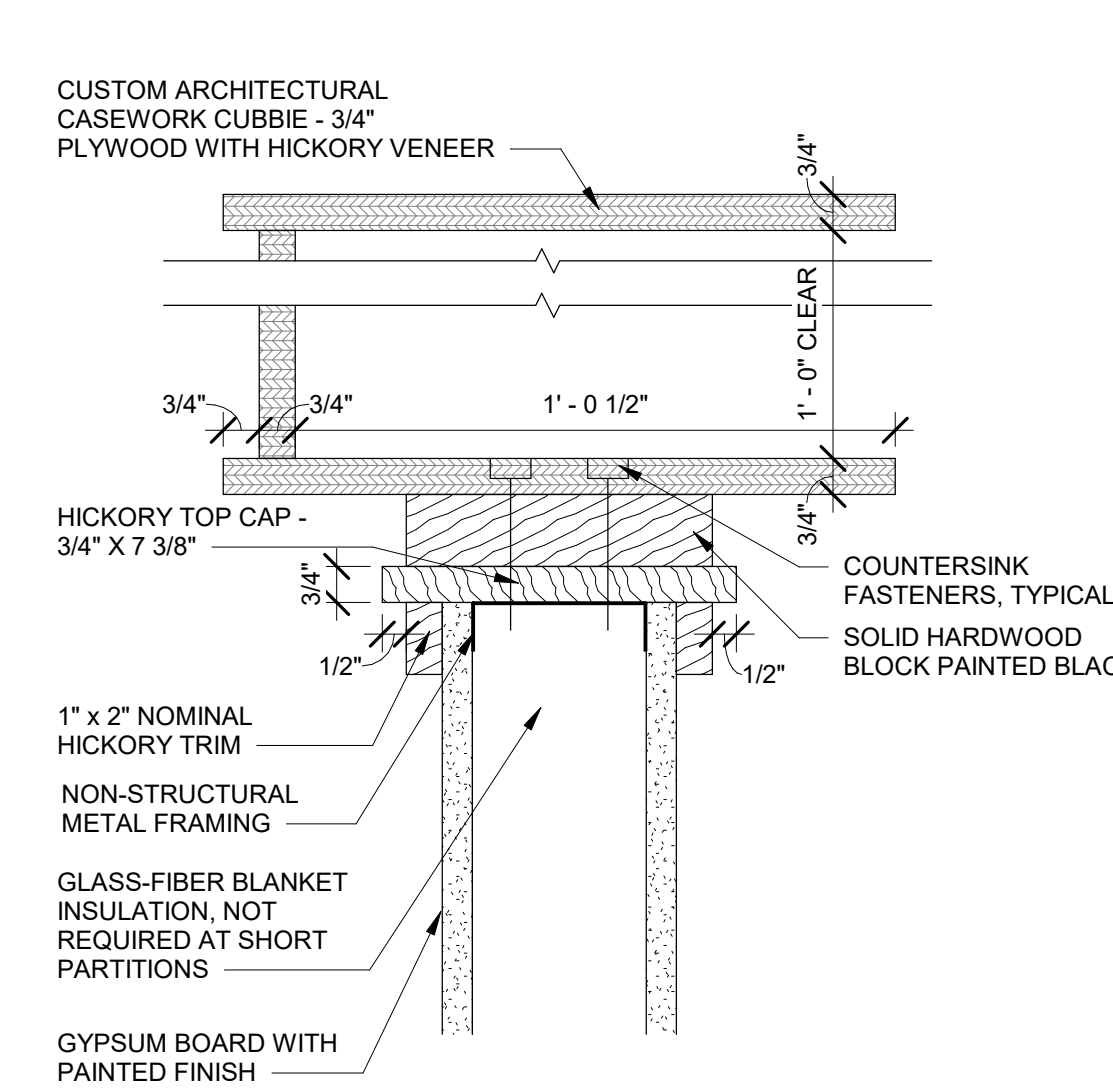
2 TRANSITION FROM PORCELAIN TILE TO SEALED CONCRETE
12" = 1'-0"



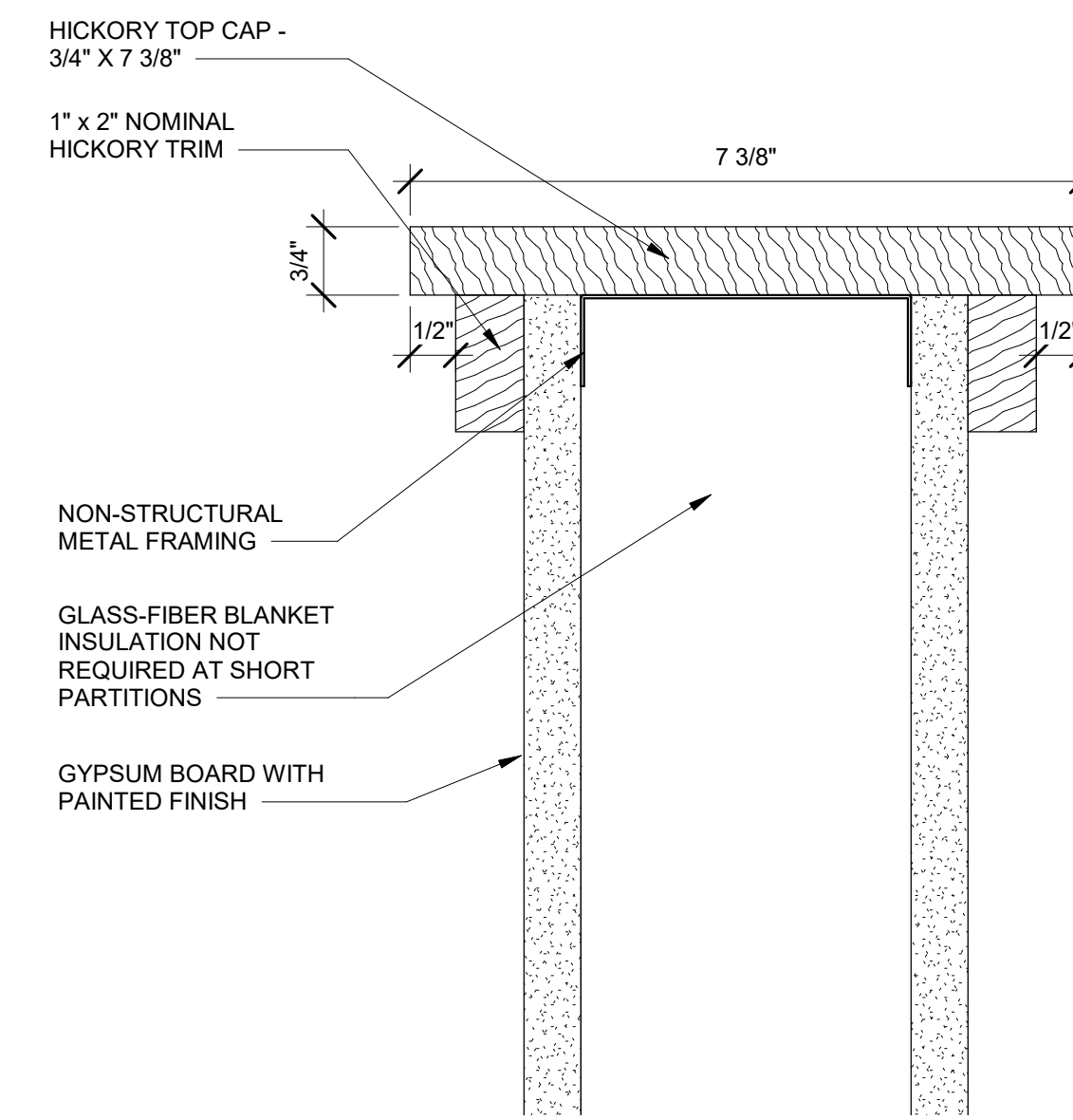
3 TRANSITION FROM CARPET TILE / PUTTING TURF TO PORCELAIN TILE
12" = 1'-0"



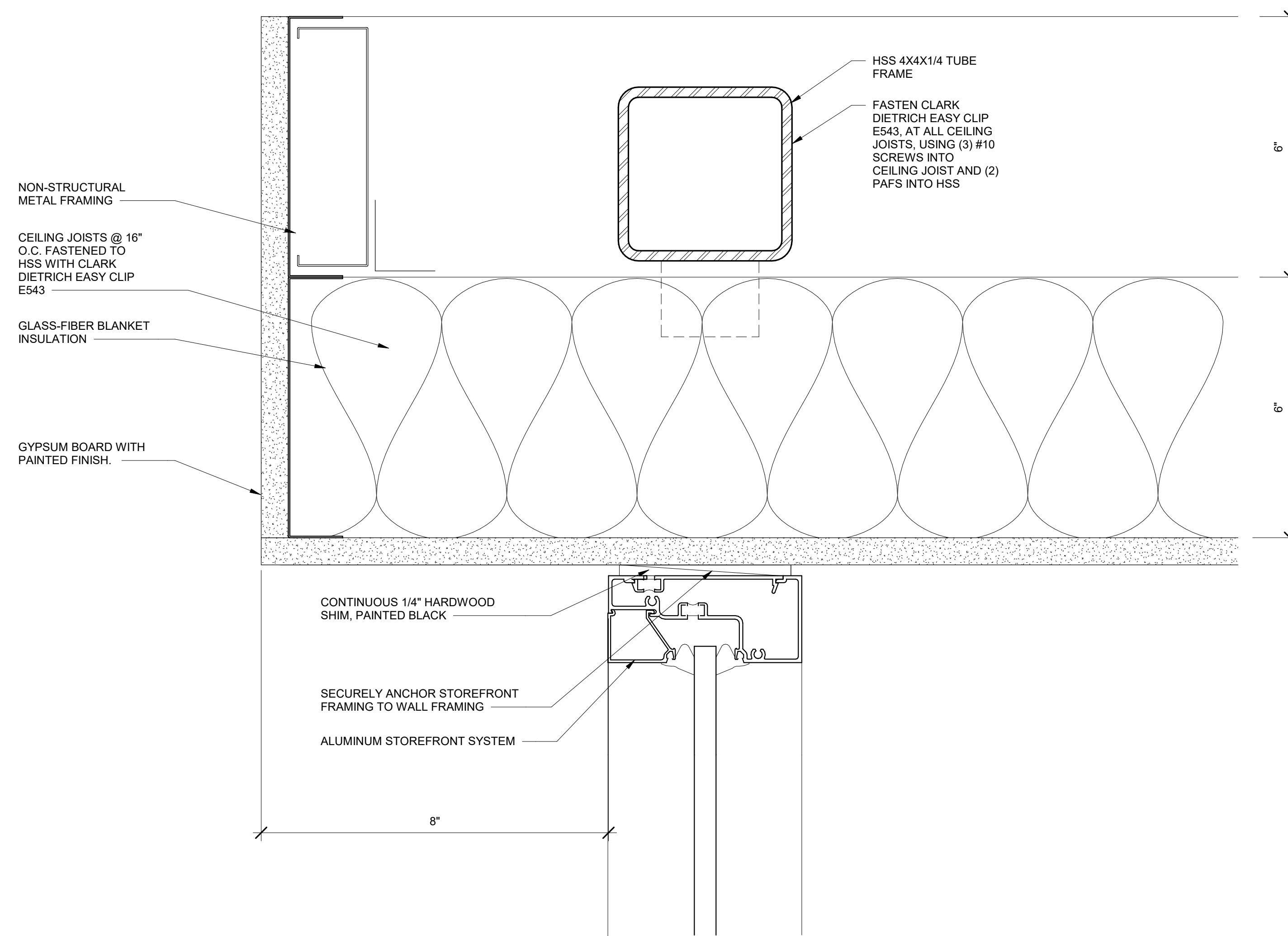
4 RESILIENT BASE DETAIL
12" = 1'-0"



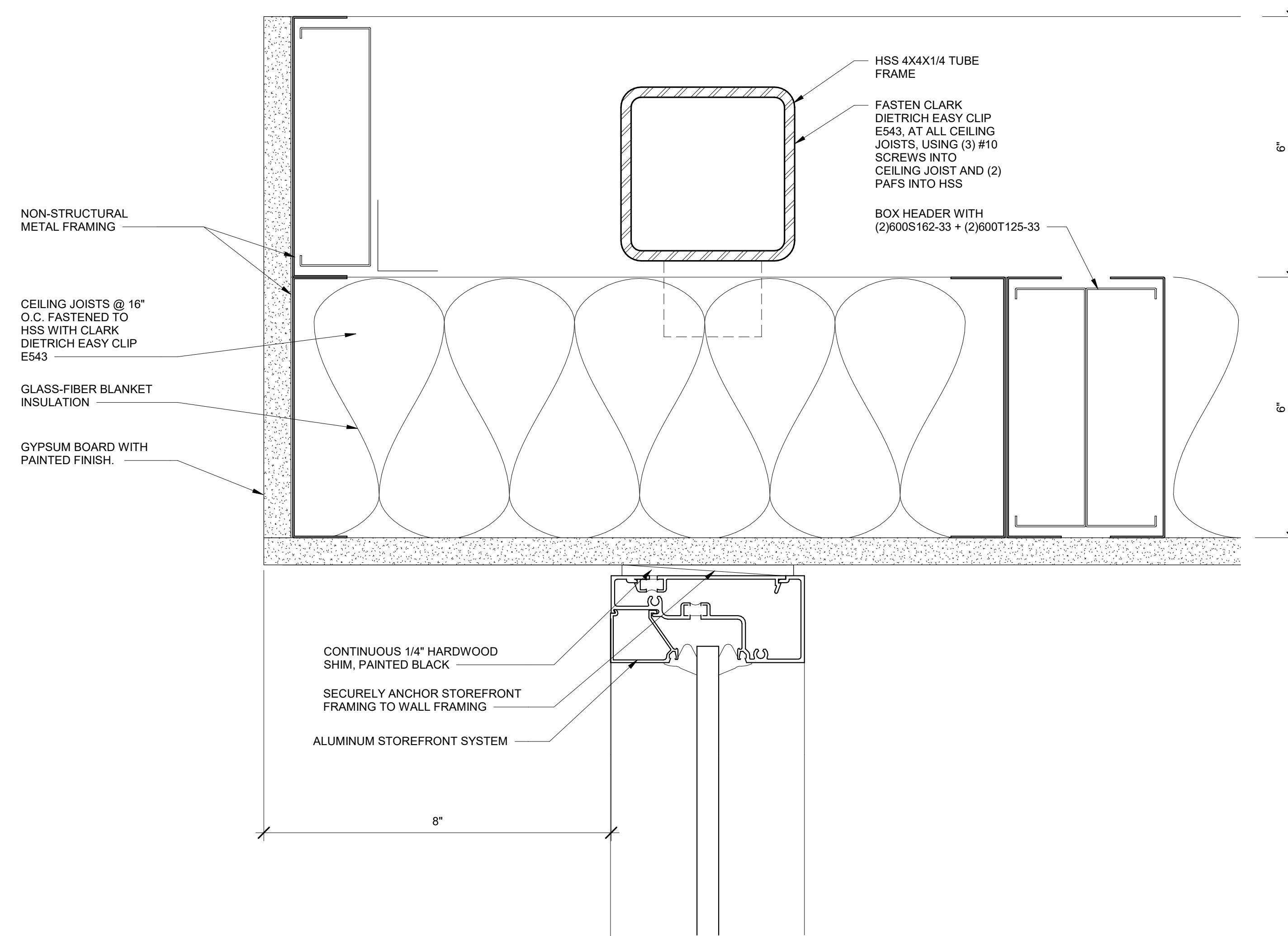
5 TYPICAL DETAIL @ STORAGE CUBBY
3" = 1'-0"



6 TYPICAL DETAIL @ SHORT PARTITION WOOD CAP
6" = 1'-0"



7 HEAD DETAIL @ STOREFRONT & CEILING
6" = 1'-0"



8 HEAD DETAIL @ STOREFRONT & CEILING
6" = 1'-0"

LOUISVILLE, KENTUCKY
CMTA OFFICE FIT OUT 2

CONSTRUCTION DOCUMENTS

© This Drawing and the Design shown thereon are the property of Omni Architects. The reproduction, copying, or other use of this Drawing or Design without the written consent of Omni Architects is prohibited.

PROJECT NUMBER 1921

DATE JULY 1, 2020

REVISIONS

FINISH AND MISC. DETAILS

12-4.2