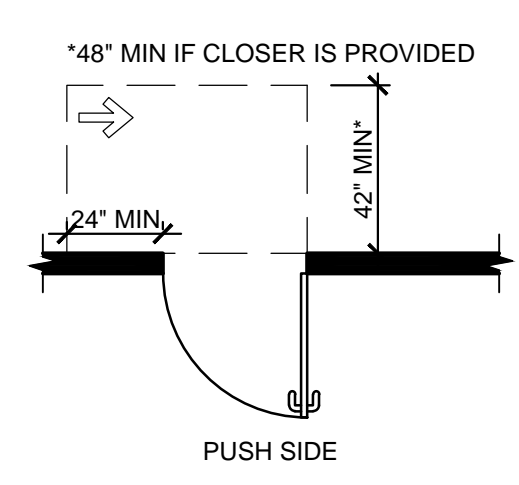
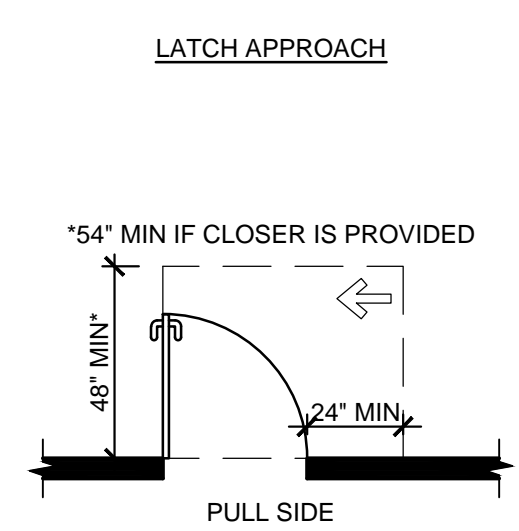
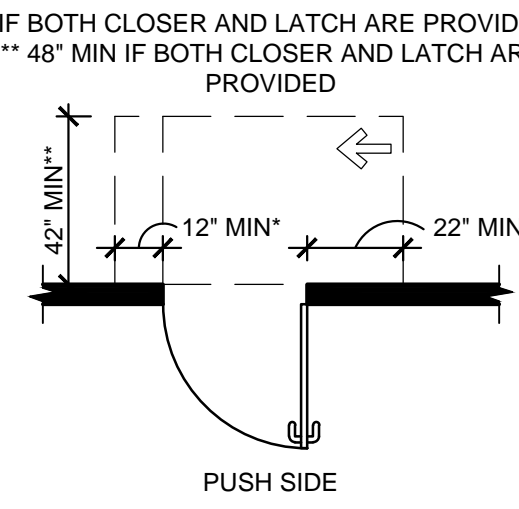
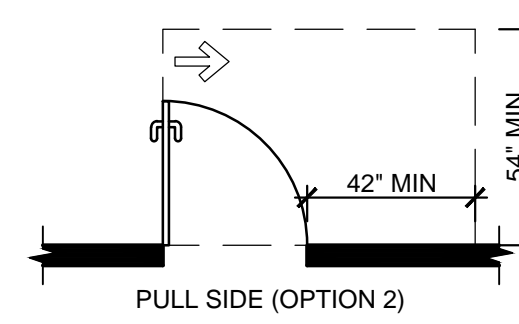
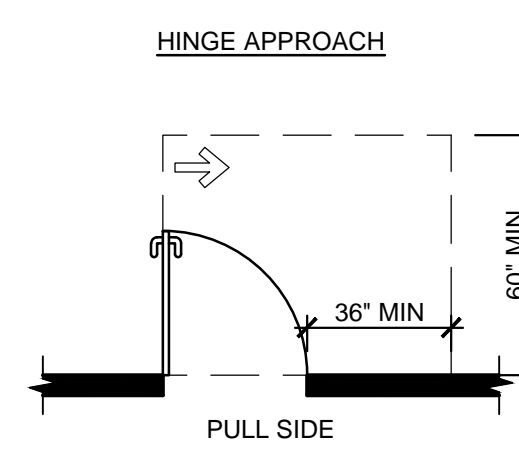
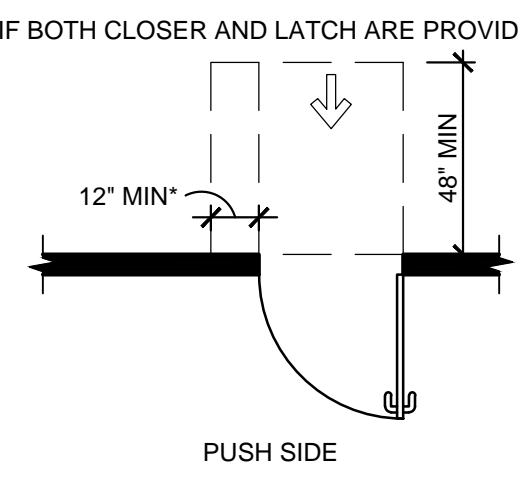
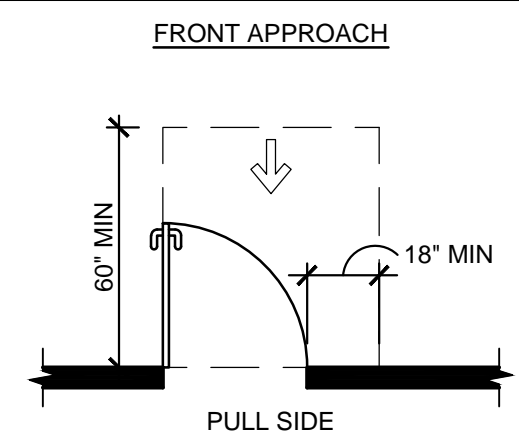


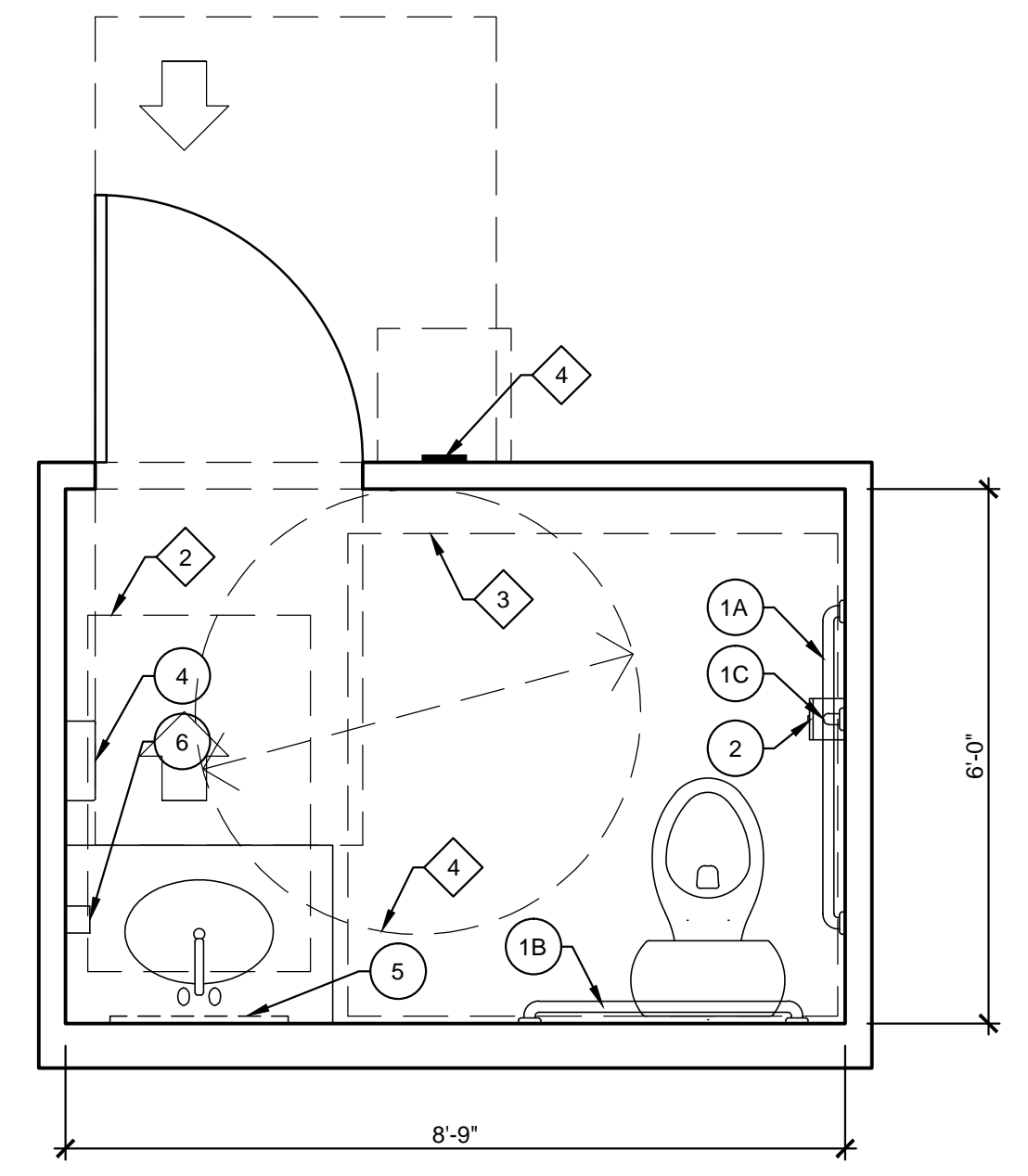
REQUIRED DOOR ACCESSIBLE CLEAR FLOOR SPACE



REQUIRED ACCESSIBLE CLEAR FLOOR SPACE

NOTE SYMBOL

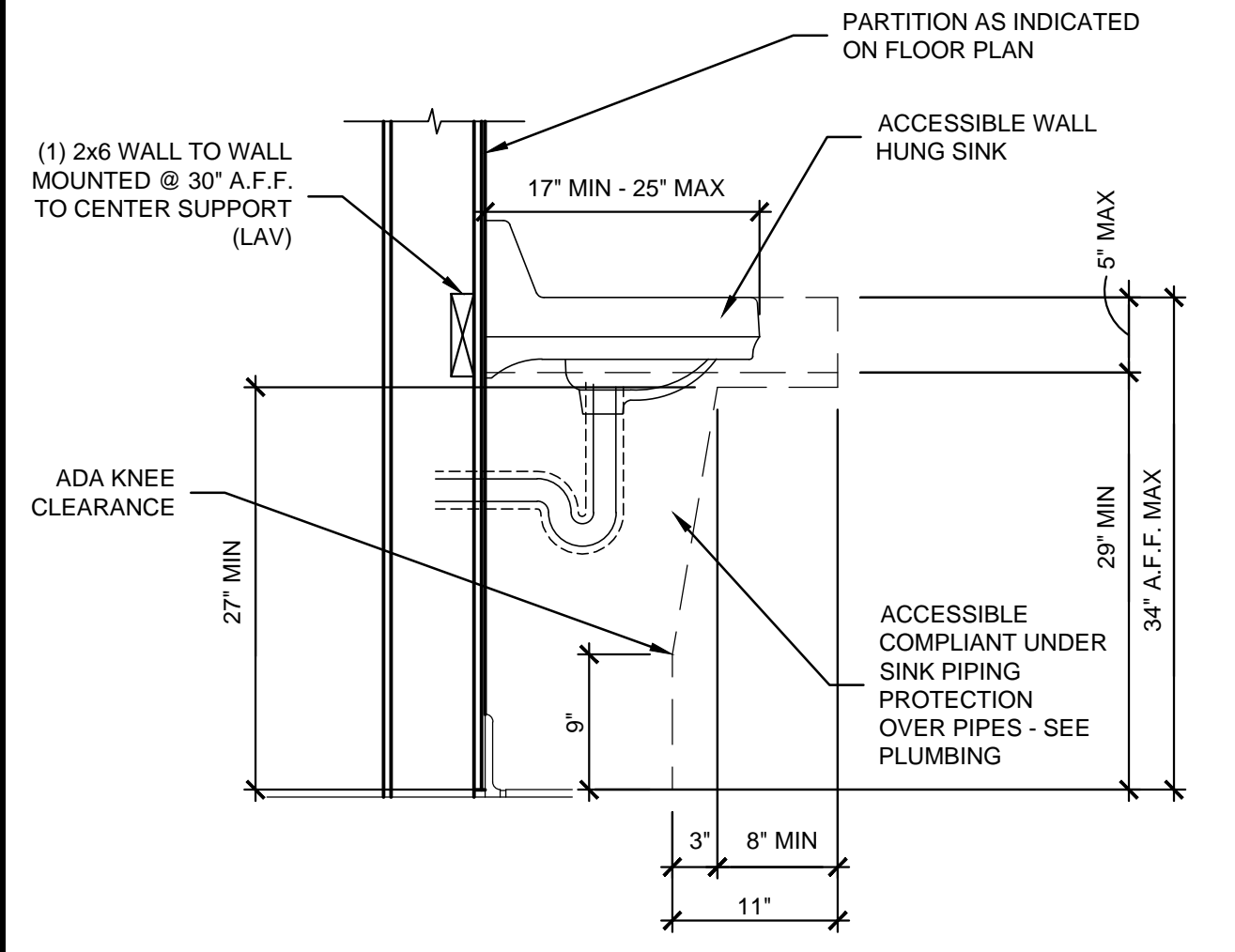
TYPICAL CLEAR FLOOR SPACES	
1	TURNAROUND / TURNING CIRCLE: 60" DIAMETER CLEAR FLOOR SPACE (TYP.)
2	EQUIPMENT / FIXTURE: 30"x48" CLEAR FLOOR SPACE
3	TOILET WITHOUT 9" TOE CLEARANCE: 66"x66" CLEAR FLOOR SPACE
4	ACCESSIBLE SIGNAGE - SEE DETAIL 04/A3.01 FOR MORE INFORMATION



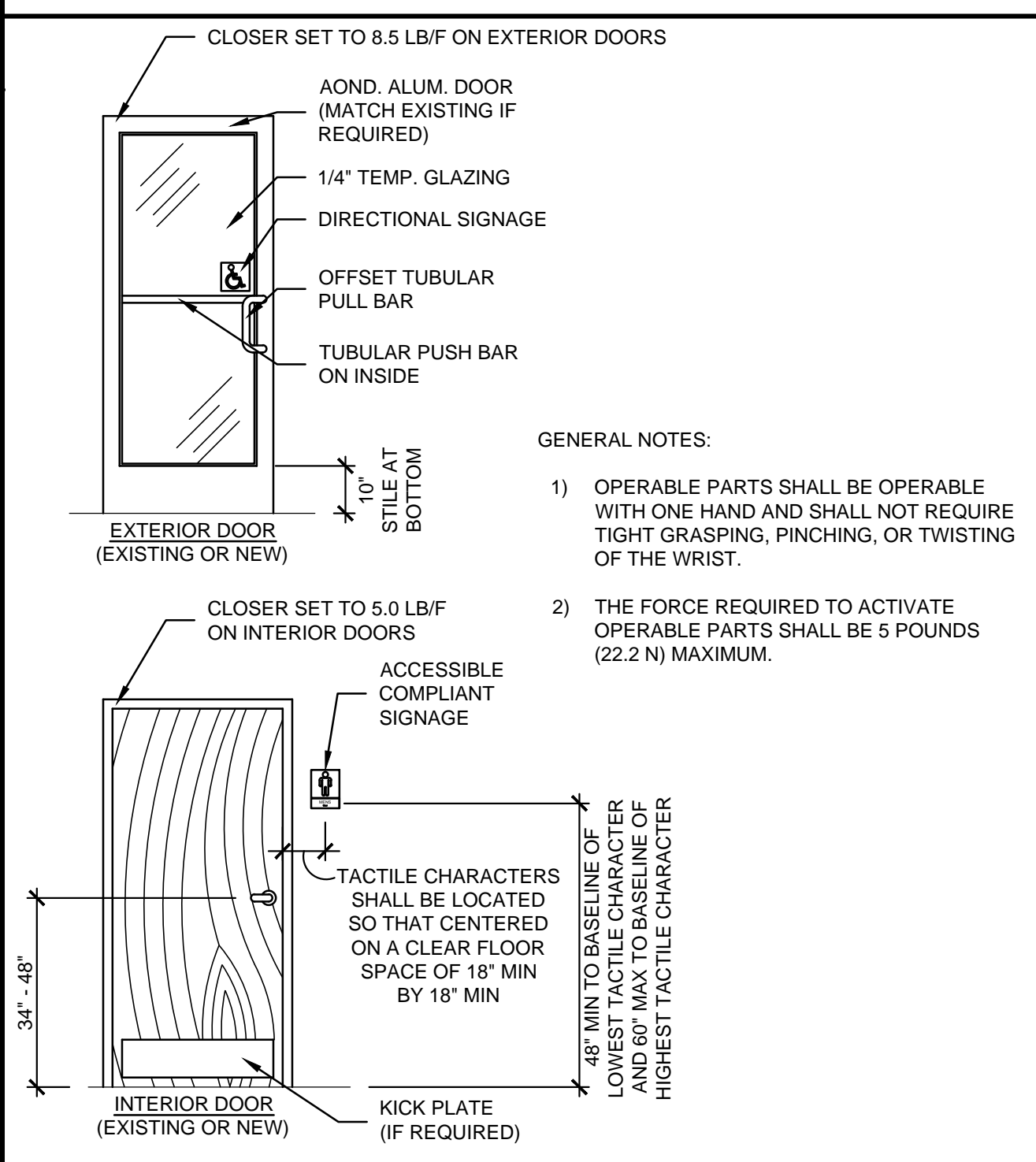
01 TYPICAL TOILET
SCALE: 1/2" = 1'-0"

MEETS THE STRICTEST INTERPRETATION OF BOTH THE ANSI 117.1 AND 2010 FEDERAL ADA STANDARDS FOR ACCESSIBLE DESIGN

NOTE:
NOT ALL ITEMS LISTED ON THIS SHEET WILL APPLY TO THIS PROJECT. IF THERE ARE ANY QUESTIONS OR COMMENTS CONTACT KEYES ARCHITECTS AND ASSOCIATES.



03 LAVATORY DETAIL
SCALE: 1" = 1'-0"



04 DOOR SIGN / DOOR DETAIL
SCALE: 3/8" = 1'-0"

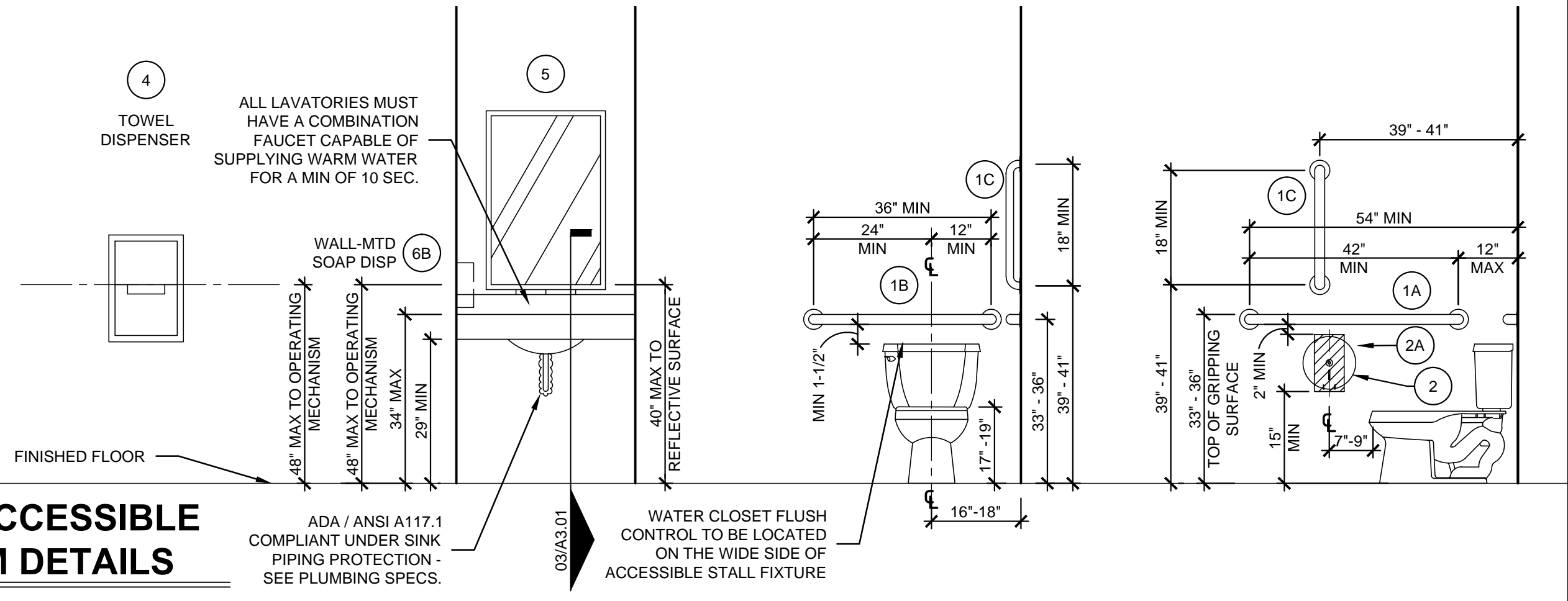
RESTROOM ACCESSORIES SCHEDULE

ITEM (SEE NOTE 2)	MODEL #	SUPPLIER	BACKUP SUPPORT (SEE NOTE 3)
1A	GRAB BAR 42"	SEE SPECS.	SEE SPECS. FOR RECOMMENDED MANUFACTURERS
1B	GRAB BAR 36"	SEE SPECS.	SEE SPECS. FOR RECOMMENDED MANUFACTURERS
1C	GRAB BAR 24" (18" MIN)	SEE SPECS.	SEE SPECS. FOR RECOMMENDED MANUFACTURERS
2	TOILET TISSUE DISPENSER, DOUBLE, SURFACE MOUNTED (SEE NOTE 4)	SEE SPECS.	SEE SPECS. FOR RECOMMENDED MANUFACTURERS
4	TOWEL DISPENSER & WASTE RECEPTACLE, INDIVIDUAL RECESSED (OPTIONAL)	SEE SPECS.	SEE SPECS. FOR RECOMMENDED MANUFACTURERS

ITEM (SEE NOTE 2)	MODEL #	SUPPLIER	BACKUP SUPPORT (SEE NOTE 3)
5	MIRROR, CHANNEL FRAME	SEE SPECS. FOR RECOMMENDED MANUFACTURERS	SEE SPECS. FOR RECOMMENDED MANUFACTURERS
6	SOAP DISPENSER, WALL-MOUNTED	SEE SPECS. FOR RECOMMENDED MANUFACTURERS	SEE SPECS. FOR RECOMMENDED MANUFACTURERS

- NOTES:
- SEE BELOW FOR ACCESSORY MOUNTING HEIGHTS
 - SELECT ONE ITEM FROM ITEM GROUPS 4 & 6. VERIFY WITH OWNER.
 - CUT BACK-UP SUPPORTS BETWEEN STUDS SO FACE OF SUPPORT IS FLUSH WITH WALL STUD
 - HATCHED AREA SHOWN FOR MOUNTING LOCATION
 - 48" MAX TO TOP OF COAT HOOK

02 TYPICAL ACCESSIBLE RESTROOM DETAILS
SCALE: 1/2" = 1'-0"



PROJECT NO: 21-4187
DRAWN BY: GRH/
DATE: 2021-08-13
2022-03-03 REV. PER G.C.



KEYES ARCHITECTS & ASSOCIATES
4717 PRESTON HIGHWAY
LOUISVILLE, KENTUCKY 40213 (502) 636-5113

NEW CONSTRUCTION FOR:
LANGLEY FOODS
256 MIDLAND TRAIL
MT. STERLING, KY 40004

Keyes Architects and Associates expressly reserve its common law copyright and other property rights in these documents. These documents are considered proprietary information and shall not be upgraded, changed or copied in any form or matter whatsoever nor are they to be assigned to any third party without first obtaining the express written permission and consent of Keyes Architects and Associates, 4717 Preston Highway, Louisville, Kentucky 40213

COMMERCIAL ADA-ANSI GUIDELINES
A3.02

PROJECT: LANGLEY FOODS - FILE: A3.02 Commercial ADA-Ansi Guidelines.dwg - DATE: Mar 03, 2022 2:32PM - BY:GARRETT_HAMM