

- PLUMBING TAG NOTES:**
1. FURNISH AND INSTALL A 1000 GALLON PRECAST CONCRETE GREASE TRAP. EXACT LOCATION SHALL BE SITE SPECIFIC AND DETERMINED BY OWNER.
  2. 3" SANITARY OUT TO SITE 5'-0". REFERENCE CIVIL DRAWINGS FOR CONTINUATION. COORDINATE EXACT LAYOUT OF EXTERIOR SANITARY WITH OWNER AND SITE PLAN PRIOR TO ROUGH-IN.
  3. 4" SANITARY OUT TO SITE 5'-0". REFERENCE CIVIL DRAWINGS FOR CONTINUATION. COORDINATE EXACT LAYOUT OF EXTERIOR SANITARY WITH OWNER AND SITE PLAN PRIOR TO ROUGH-IN.
  4. CONDENSATE LINE FROM HVAC EQUIPMENT SHALL BE CONNECTED TO THE DOWNSPOUT COLLECTION DRAIN LINE AT PERIMETER OF BUILDING.

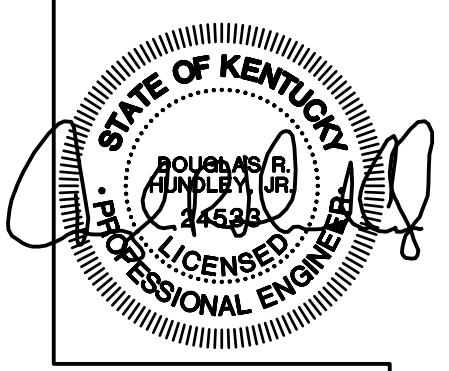
- PLUMBING GENERAL NOTES:**
- A. PLUMBING CONTRACTOR SHALL PROVIDE AS-BUILT DRAWINGS WITH DIMENSIONED LOCATIONS OF SANITARY, WATER AND GAS LINES. REFERENCE GENERAL NOTE "A" FOR PHOTOGRAPHING REQUIREMENTS. LOCATION, DIRECTION AND CORRESPONDING NUMBER OF EACH PHOTOGRAPH SHALL BE INDICATED ON THE AS-BUILT DRAWINGS.
  - B. THE OWNER SHALL CHECK WALLS FOR LOCATIONS OF ALL PLUMBING LINES PRIOR TO DRYWALL BEING INSTALLED.
  - C. PLUMBING CONTRACTOR SHALL CAULK OR FOAM ALL WALL/CEILING PENETRATIONS MADE AS A RESULT OF PLUMBING PIPING INSTALLATION PRIOR TO INSULATION BEING INSTALLED TO IMPROVE THE VAPOR BARRIER. COORDINATE THIS WORK WITH THE GENERAL CONTRACTOR.
  - D. THE FOUR COMPARTMENT SINK LIP SHALL BE SET AT 39" ABOVE FINISH FLOOR.
  - E. ALL TRENCHES UNDER PAVEMENT SHALL BE FILLED WITH STONE.
  - F. ALL TOILET FLANGES SHALL BE CAST IRON OR STAINLESS STEEL.
  - G. ALL INTERIOR AND EXTERIOR DOMESTIC WATER PIPING SHALL BE CROSS-LINKED POLYETHYLENE (PEX OR EQUAL).
  - H. ALL INTERIOR DOMESTIC WATER LINES SHALL BE 3/4" MINIMUM. WATER LINES SERVING FLUSH VALVES SHALL BE 1/2".
  - I. ALL DOMESTIC WATER LINES ENTERING AND EXITING THE BUILDING BELOW GRADE SHALL BE INSTALLED IN A SLEEVE FROM THE POINT WHERE THEY PENETRATE THE FLOOR TO BEYOND THE BLACK CONCRETE OR THE EQUIPMENT PAD, DEPENDING ON WHAT DIRECTION THEY EXIT THE BUILDING.
  - J. ALL WATER LINES SHALL BE SPACED 2" APART WHERE THEY PENETRATE THE FLOOR SLAB FOR EASE OF FUTURE MAINTENANCE.
  - K. ALL SHUT-OFF VALVES ON DOMESTIC WATER LINES SHALL BE TAGGED WITH 3/8"x1/2" ENGRAVED LAMINATED OR BRASS TAGS.
  - L. PLUMBING CONTRACTOR SHALL FURNISH AND INSTALL A FIVE POUND ANODE ON ALL FREEZE PROOF WATER HYDRANTS. GENERAL CONTRACTOR SHALL PROVIDE THE OWNER WITH PHOTOGRAPHS OF ALL ANODES TO VERIFY INSTALLATION.
  - M. GAS AND WATER UTILITY ENTRANCES INTO THE BUILDING SHALL BE SLEEVED TO OUTSIDE THE CONCRETE PADS.
  - N. PRIOR TO TOILETS BEING SET, THE PLUMBING CONTRACTOR SHALL VERIFY FLATNESS OF THE FLOOR WITH THE GENERAL CONTRACTOR TO ENSURE EACH TOILET WILL BE IN COMPLETE CONTACT WITH THE FLOOR AND NO SHIMS WILL BE REQUIRED.
  - O. EXTERIOR SEWER CLEANOUTS SHALL BE PLACED WHERE INDICATED ON THE PLANS AND/OR A MAXIMUM OF 95'-0" APART.
  - P. ALL OUTSIDE CLEANOUTS SHALL BE BRASS.
  - Q. ALL SANITARY AND GREASE WASTE PIPING SHALL BE SCHEDULE 40 PVC.

**FLOOR PLAN -  
SANITARY WASTE AND VENT**

SCALE: 1/4"=1'-0"

1  
P2.01

PROJECT NO:  
22-4311  
DRAWN BY:  
WTD  
DATE:  
05/02/2022

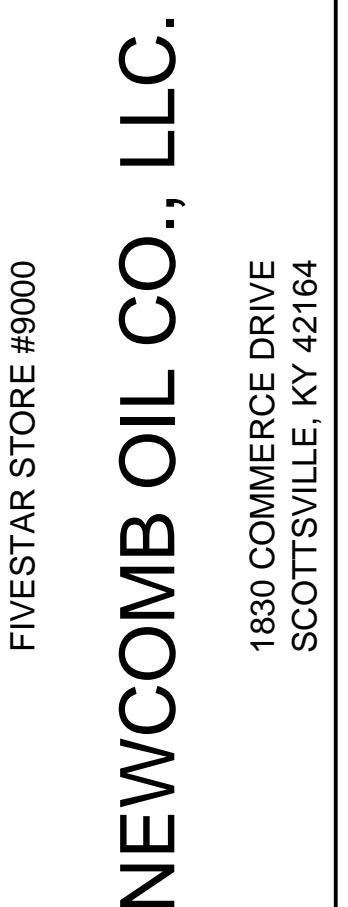
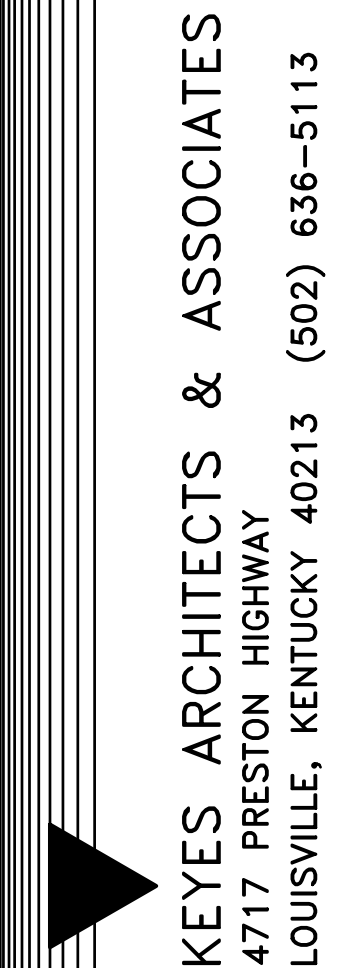
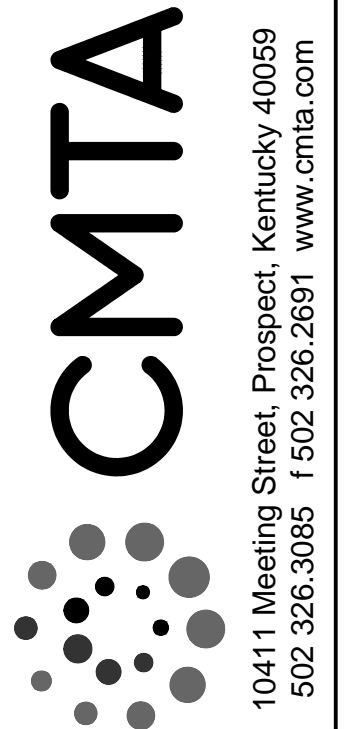
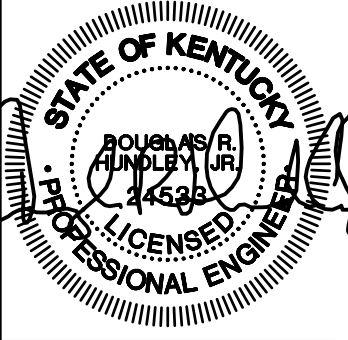


**CMTA**  
10411 Meeting Street, Prospect, Kentucky 40059  
502.326.3085 f 502.326.2691 www.cmta.com

**KEYES ARCHITECTS & ASSOCIATES**  
4717 PRESTON HIGHWAY  
LOUISVILLE, KENTUCKY 40213 (502) 636-5113

FIVESTAR STORE #9000  
**NEWCOMB OIL CO., LLC.**  
1830 COMMERCE DRIVE  
SCOTTSDALE, KY 42164

FLOOR PLAN - SANITARY  
WASTE AND VENT  
**P2.01**



### PLUMBING FIXTURE SCHEDULE

DESIGNATOR	FIXTURE	CW	HW	SAN	VENT
P-1	WATER CLOSET - FLOOR SET - FLUSH VALVE	1 1/4"	--	4"	2"
P-1A	WATER CLOSET - FLOOR SET - FLUSH VALVE - ADA	1 1/4"	--	4"	4"
P-2	LAVATORY - INTEGRAL TO COUNTERTOP	1/2"	1/2"	1 1/2"	1 1/2"
P-3	URINAL - ADA	1/2"	--	2"	1 1/2"
P-4	FOUR COMPARTMENT STAINLESS STEEL SINK	3/4"	3/4"	2"	1 1/2"
P-4A	ONE COMPARTMENT HAND SINK INTEGRAL TO COUNTERTOP	1/2"	1/2"	1 1/2"	1 1/2"
P-4B	WALL-HUNG HAND SINK	1/2"	1/2"	1 1/2"	1 1/2"
P-5	RECESSED MOP BASIN - 24"x24"	--	--	3"	1 1/2"
P-6	ICE MAKER CONNECTION BOX	1/2"	--	--	--
HB	COLD WATER HOSE BIBB	3/4"	--	--	--
HB-1	HOT WATER HOSE BIBB	--	3/4"	--	--
HB-2	CONCEALED COLD WATER HOSE BIBB	3/4"	--	--	--
FPWH	FREEZE-PROOF WALL HYDRANT	3/4"	--	--	--
FD-1	SQUARE TOP FLOOR DRAIN - 3" OUTLET	--	--	3"	1 1/2"

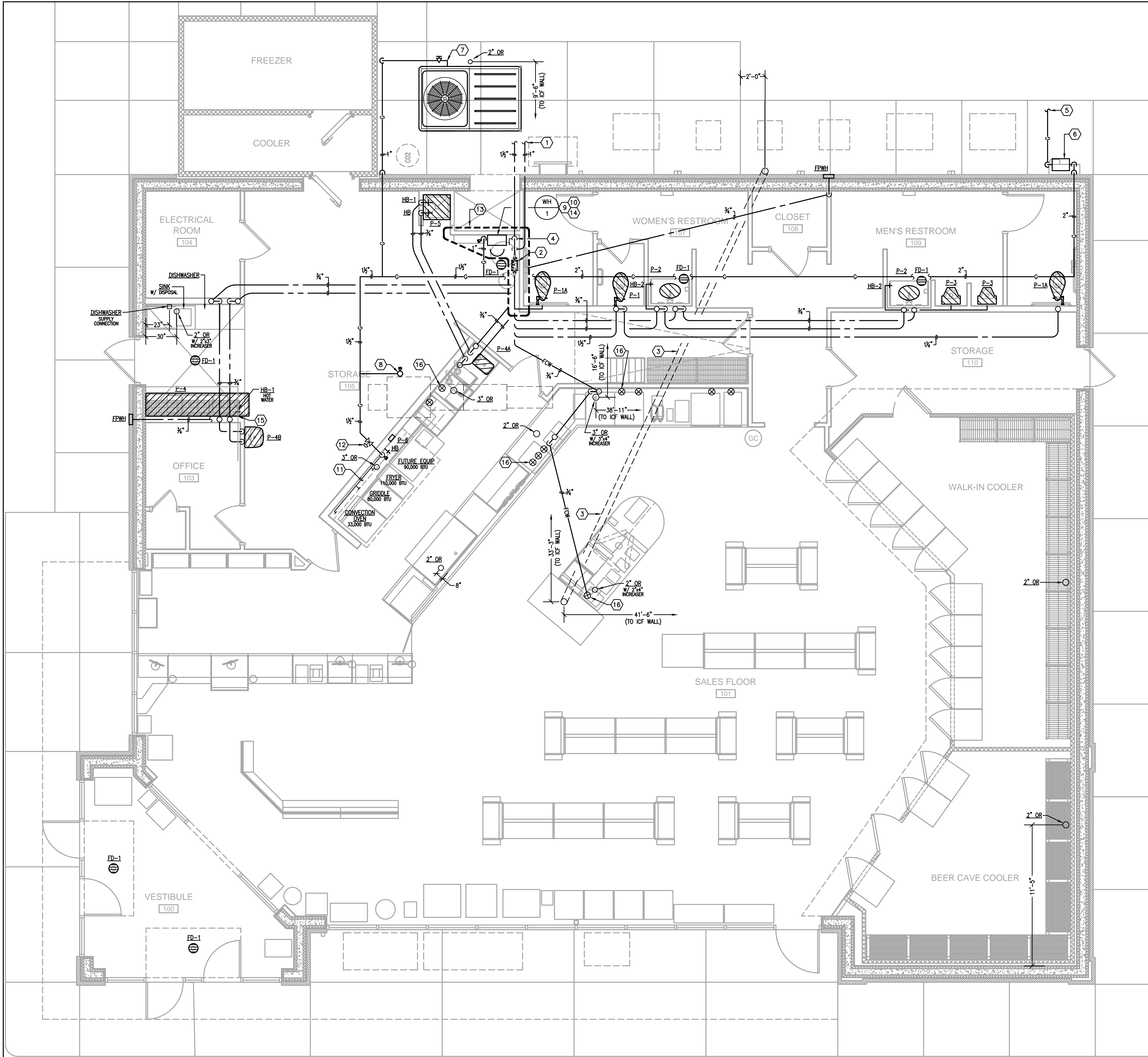
**NOTES:**

- PIPE SIZES ARE AS INDICATED UNLESS OTHERWISE NOTED ON FLOOR PLANS AND RISER DIAGRAMS.
- MINIMUM 2" SANITARY PIPING UNDERGROUND.
- PROVIDE ALL REQUIRED PIPING TO FIXTURES INDICATED ON THE FLOOR PLANS, INDICATED WITH A "P" DESIGNATION. PROVIDE PIPING OF SIZE INDICATED IN THIS SCHEDULE.
- PIPE ALL EQUIPMENT (SUPPLIED BY OTHERS) AS REQUIRED TO OBTAIN A FULL AND OPERATIONAL SYSTEM PROVIDE BACKFLOW PROTECTION AS/IF REQUIRED BY THE DETAILS AND BY THE STATE PLUMBING CODE ALL EQUIPMENT SHALL BE CONNECTED PER THE MANUFACTURER'S REQUIREMENTS. THE PLUMBING CONTRACTOR SHALL ALSO INSTALL ANY DRAIN PIPING CONNECTIONS AND SPILL INDIRECTLY TO EITHER AN OPEN RECEPTACLE OR FLOOR DRAIN. REFER TO ARCHITECTURAL PLANS FOR EXACT PLACEMENT OF ALL EQUIPMENT.

- PLUMBING TAG NOTES:**
- (1) 1/2" and (1) 1" DOMESTIC WATER LINES OUT TO SITE. REFERENCE CIVIL DRAWINGS FOR CONTINUATION. WATER LINES MUST BE CONTINUOUS WITH NO JOINTS ALL THE WAY TO THE METER.
  - FURNISH AND INSTALL 1/2" WILKINS MODEL 375 BACKFLOW PREVENTER WITH AIR GAP AND STRAINER. REFERENCE THE DOMESTIC WATER ENTRY PIPING SCHEMATIC ON DRAWING P1.01 FOR ADDITIONAL INFORMATION.
  - FURNISH AND INSTALL 6" PVC SLEEVE BELOW SLAB WITH (2) 45° ELBOWS ON EACH END.
  - (1) 1/2" and (1) 1" DOMESTIC WATER LINES UP FROM BELOW SLAB. REFERENCE DOMESTIC WATER ENTRY SCHEMATIC ON DRAWING P1.01 FOR ADDITIONAL INFORMATION.
  - NATURAL GAS SERVICE OUT TO SITE. COORDINATE PIPE MATERIAL, SIZE AND GAS PRESSURE WITH LOCAL UTILITY COMPANY.
  - FURNISH AND INSTALL NEW NATURAL GAS METER PER LOCAL UTILITY COMPANY REQUIREMENTS.
  - EXTEND 1" GAS TO COOLING UNIT AND CONNECT. FURNISH AND INSTALL GAS SHUT-OFF VALVE AND 6" DIRT LEG.
  - EXTEND 3/4" GAS TO MAKE-UP AIR UNIT ON ROOF AND CONNECT. FURNISH AND INSTALL 6" DIRT LEG AND GAS SOLENOID VALVE. INTERCONNECT GAS SOLENOID VALVE TO HOOD FIRE SUPPRESSION SYSTEM. COORDINATE THIS WORK WITH THE ELECTRICAL CONTRACTOR.
  - EXTEND 1" GAS TO WATER HEATER AND CONNECT. FURNISH AND INSTALL GAS SHUT-OFF VALVE AND 6" DIRT LEG.
  - WH-1 - FURNISH AND INSTALL A RINNAI MODEL RL75(VC2528FFUD-US), TANKLESS GAS FIRED WATER HEATER WITH MINIMUM INPUT OF 10,300 BTUH AND A MAXIMUM INPUT OF 180,000 BTUH.
  - ROUTE 1/2" GAS HEADER LOW ON WALL BEHIND COOKING EQUIPMENT. FURNISH AND INSTALL GAS QUICK CONNECT AND GAS SHUT-OFF VALVE AT EACH PIECE OF EQUIPMENT AND PROVIDE (1) 3/4" QUICK CONNECT AND GAS SHUT-OFF VALVE FOR FUTURE CONNECTION.
  - FURNISH AND INSTALL GAS SOLENOID VALVE. INTERCONNECT WITH HOOD FIRE SUPPRESSION SYSTEM.
  - PROVIDE BRASS TAG LABELS AND SHUTOFF VALVES IN THIS AREA FOR WATER PIPING AT EACH WALL OR FLOOR PENETRATION.
  - APPROXIMATE LOCATION OF PRESSURE ASSIST PUMP. REFERENCE DOMESTIC WATER ENTRY PIPING SCHEMATIC ON DRAWING P1.01 FOR ADDITIONAL INFORMATION.
  - HOSE BIBB SHALL BE MOUNTED 18" ABOVE FINISH FLOOR AND 7"-8" OFF OF THE ICF WALL.
  - FURNISH AND INSTALL A ZURN MODEL QCM43-6GX COPPER MANIFOLD AT EACH GROUP OF SHUT-OFF VALVES LOCATED WITHIN CABINET SPACE.

**NEW GAS METER LOAD:**

HVAC AIR HANDLING UNIT -	150,000 BTUH
DOMESTIC WATER HEATER -	180,000 BTUH
MAKE-UP AIR UNIT -	109,600 BTUH
KITCHEN EQUIPMENT -	313,000 BTUH
<b>TOTAL CONNECTED LOAD -</b>	<b>752,600 BTUH</b>



### FLOOR PLAN - WATER AND GAS

SCALE: 1/4"=1'-0"

