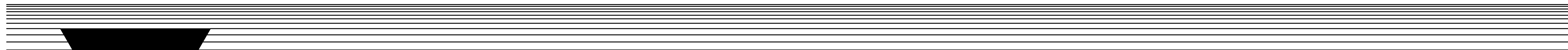


RENOVATION

ROOSTER RUN

6515 NEW SHEPHERDSVILLE RD
COX CREEK, KY 40013

ISSUE DATE: -----		
REVISIONS:		NOTE SYMBOL



ARCHITECT:

KEYES ARCHITECTS AND ASSOCIATES
4717 PRESTON HIGHWAY
LOUISVILLE, KENTUCKY 40213
PH: (502) 636-5113
CONTACT: DEBBY BIRD
EMAIL: DBIRD@KEYESARCHITECTS.COM
ARCHITECT: CHARLES J. KEYES III

OWNER:

ROOSTER RUN
3515 NEW SHEPHERSDVILLE ROAD
COX CREEK, KY 40013

Kash Patel
roosterunky@gmail.com

CONTRACTOR:

BCD, INC.
1962 FILIATREAU LANE
BARDSTOWN KY 40004

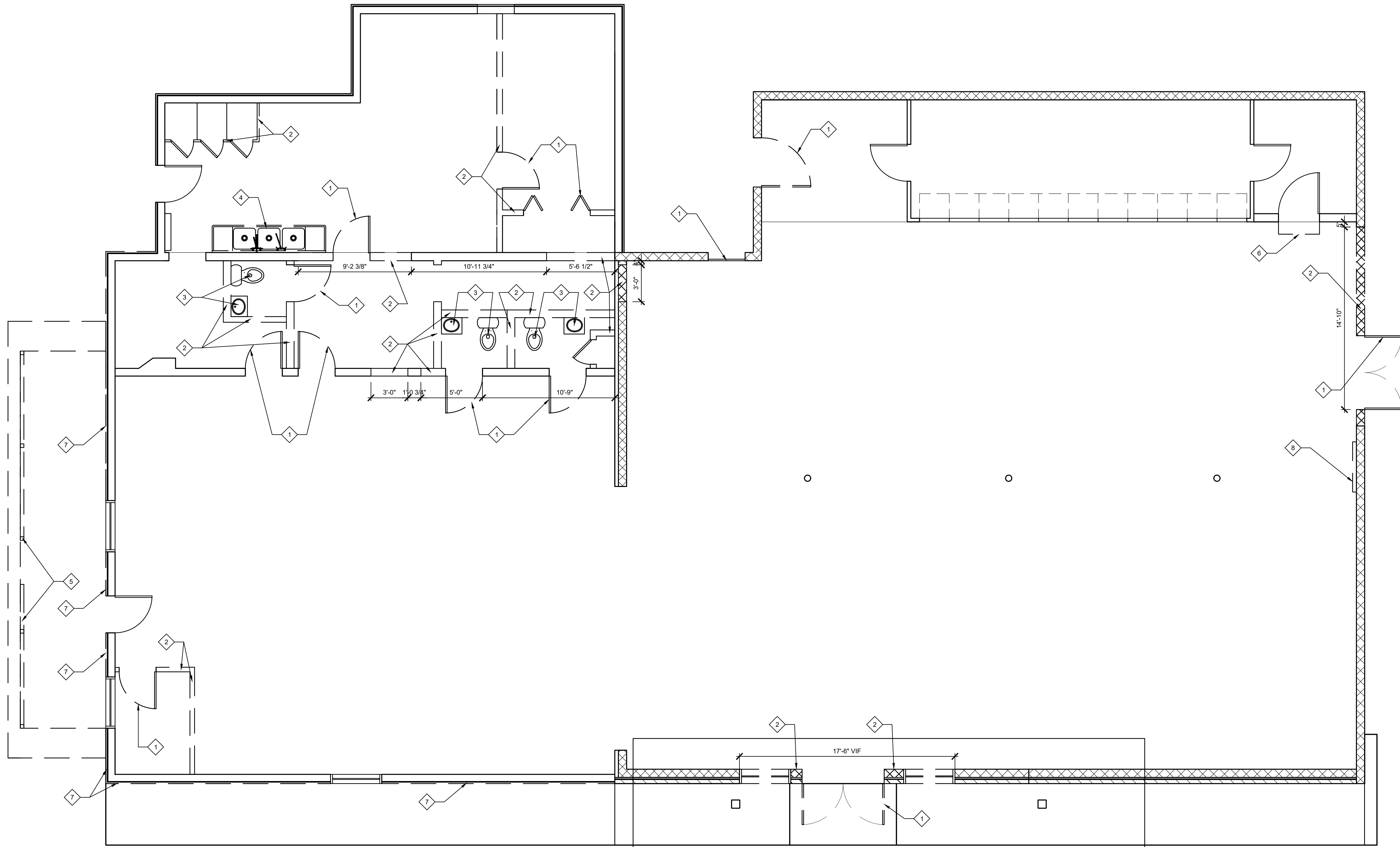
JASON HARROD
JHARROD@BARDSTOWN.COM

PROJECT INFORMATION	
APPLICABLE BUILDING CODES	
BUILDING CODE : KBC	2018
ACCESSIBILITY CODE : ADA / ANSI 117.1	2010 / 2009
ENERGY CODE : IECC	2012
USE AND OCCUPANCY: A-2 - RESTAURANT	
CONSTRUCTION TYPE: V-B	
BUILDING INFORMATION: EXISTING BLOCK AND WOOD FRAMED BUILDING	
EXISTING BUILDING:	5733 s.f.
BUILDING ADDITION:	444 s.f.
TOTAL BUILDING SIZE:	6177 s.f.
FIRE SUPPRESSION: FULLY SPRINKLERED	

OCCUPANCY ALLOWANCE			
FUNCTION OF SPACE	ALLOWANCE	AREA	OCCUPANCY
TOTAL OCCUPANCY ALLOWANCE:			###

Sheet List Table

Sheet Number	Sheet Title
T1.01	Title Sheet
Demolition Plans & Details	
D1.01	Demolition Plan
Foundation Plans & Details	
F1.01	Foundation Plan
F2.01	Foundation Details
Life Safety Plans	
LS1.01	Life Safety Plan
Floor Plans	
A1.01	Floor Plan
Exterior Elevations	
A2.01	Exterior Elevations
Schedules and Standards	
A3.01	Commercial ADA-Ansi Guidelines
A3.01	Residential ADA-Ansi Guidelines
A3.02	Accessibility Site Details
A3.03	Schedules
Details & Sections	
A5.01	Wall Sections and Details
A6.01	Door Details
A6.02	Window Details
Specifications	
SP1.01	Specifications
SP1.02	Specifications
SP1.03	Specifications
SP1.04	Specifications



01 DEMO PLAN
SCALE: 1/4" = 1'-0"

PATCH AND REPAIR NOTES

PROMPTLY PATCH AND REPAIR HOLES AND DAMAGED SURFACES CAUSED TO ADJACENT CONSTRUCTION BY SELECTIVE DEMOLITION OPERATIONS.

WHERE REPAIRS TO EXISTING SURFACES ARE REQUIRED, PATCH TO PRODUCE SURFACES SUITABLE FOR NEW MATERIALS.

RESTORE EXPOSED FINISHES OF PATCHED AREAS AND EXTEND FINISH RESTORATION INTO ADJOINING CONSTRUCTION TO REMAIN IN A MANNER THAT ELIMINATES EVIDENCE OF PATCHING AND REFINISHING.

PATCH AND REPAIR FLOOR AND WALL SURFACES IN THE NEW SPACE WHERE DEMOLISHED WALLS OR PARTITIONS EXTEND ONE FINISHED AREA INTO ANOTHER. PROVIDE A FLUSH AND EVEN SURFACE OF UNIFORM COLOR AND APPEARANCES.

SELECTIVE DEMOLITION NOTES

REMOVE AND LEGALLY DISPOSE OF ITEMS EXCEPT THOSE INDICATED TO BE REINSTALLED SALVAGED, OR TO REMAIN THE OWNER'S PROPERTY.

REMOVE ITEMS INDICATED, CLEAN SURFACE, AND OTHERWISE REPAIR THEM FOR REUSE;

STORE AND PROTECT AGAINST DAMAGE. REINSTALL ITEMS IN LOCATIONS INDICATED.

PROTECT CONSTRUCTION INDICATED TO REMAIN AGAINST DAMAGE AND SOILING DURING SELECTIVE DEMOLITION. WHEN PERMITTED BY THE ARCHITECT, ITEMS MAY BE REMOVED TO A SUITABLE, PROTECTED STORAGE LOCATION DURING SELECTED DEMOLITION AND THEN CLEANED AND REINSTALLED IN THEIR ORIGINAL LOCATIONS.

IDENTIFY AND ACCURATELY LOCATE CAPPED UTILITIES AND OTHER SUBSURFACE STRUCTURAL ELECTRICAL OR MECHANICAL CONDITIONS. DOCUMENT THESE UTILITIES ON RECORD DRAWINGS PROVIDED TO ARCHITECT UPON COMPLETION OF PROJECT.

PROTECT WALLS, CEILINGS, FLOORS, AND OTHER EXISTING FINISH WORK THAT ARE TO REMAIN AND ARE EXPOSED DURING SELECTIVE DEMOLITION OPERATIONS. REMOVE AND TRANSPORT DEBRIS IN A MANNER THAT WILL PREVENT SPILLAGE ON ADJACENT SURFACE AND AREAS.

COVER AND PROTECT FURNITURE, FURNISHINGS, AND EQUIPMENT THAT HAVE NOT BEEN REMOVED.

BY SELECTIVE DEMOLITION OPERATIONS. RETURN AREAS TO CONDITION EXISTING BEFORE START OF NEW WORK.

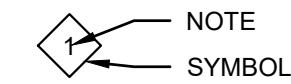
DEMOLISH AND REMOVE EXISTING CONSTRUCTION ONLY TO THE EXTENT REQUIRED BY NEW CONSTRUCTION AND AS INDICATED. DISPOSAL: PROMPTLY DISPOSE OF DEMOLISHED MATERIALS. DO NOT ALLOW DEMOLISHED MATERIALS TO ACCUMULATE ON SITE. TRANSPORT DEMOLISHED MATERIALS OFF OWNER'S PROPERTY AND LEGALLY DISPOSE OF THEM. SWEEP THE AREA OF WORK BROOM CLEAN ON COMPLETION OF SELECTIVE DEMOLITION OPERATION.

PROTECTION OF PEDESTRIANS SHALL BE PROVIDED DURING CONSTRUCTION, REMODELING, AND DEMOLITION ACTIVITIES AS REQUIRED BY STATE BUILDING CODE. SIGNS SHALL BE PROVIDED TO DIRECT PEDESTRIAN TRAFFIC DURING DEMOLITION, CONSTRUCTION AND REMODELING.

IF BUSINESS WILL REMAIN OPERATIONAL DURING DEMOLITION AND CONSTRUCTION COORDINATE ACTIVITIES WITH OWNER TO MINIMIZE OR ELIMINATE DISRUPTION TO THE OPERATION OF THE BUSINESS.

SHEET NOTES:

- 1 DEMO DOOR
- 2 DEMO WALL
- 3 DEMO RESTROOM FIXTURES
- 4 REMOVE SINK AND SAVE FOR RELOCATION
- 5 DEMOLISH PORCH INCLUDING RAILINGS, POSTS, AND ROOF
- 6 DEMO RAMP INTO STORAGE ROOM
- 7 REMOVE WOOD SIDING AND SAVE FOR RE-USE



8 RELOCATE ALL ELECTRICAL AND GAS PUMP WIRING TO NEW ELECTRICAL ROOM

NOTE: ALL DIMENSIONS ARE TO FACE OF STUD
NOTE: GENERAL CONTRACTOR RESPONSIBLE FOR COORDINATION OF ALL SUB TRADES AND REQUIREMENTS BY OWNER
NOTE: ELECTRICAL, HVAC AND PLUMBING TO BE RELOCATED PER FEDERAL, STATE AND LOCAL CODES. GENERAL CONTRACTOR TO COORDINATE.

Keyes Architects and Associates expressly reserve its common law copyright and other property rights in these documents. These documents are considered proprietary information and shall not be upgraded, changed or copied in any form or matter whatsoever nor are they to be assigned to any third party without first obtaining the express written permission and consent of Keyes Architects and Associates, 4717 Preston Highway, Louisville, Kentucky 40213

RENOVATION

ROOSTER RUN
6515 NEW SHEPHERDSVILLE RD
COX CREEK, KY 40013

KEYES ARCHITECTS & ASSOCIATES
4717 PRESTON HIGHWAY
LOUISVILLE, KENTUCKY 40213 (502) 636-5113

NOT FOR CONSTRUCTION

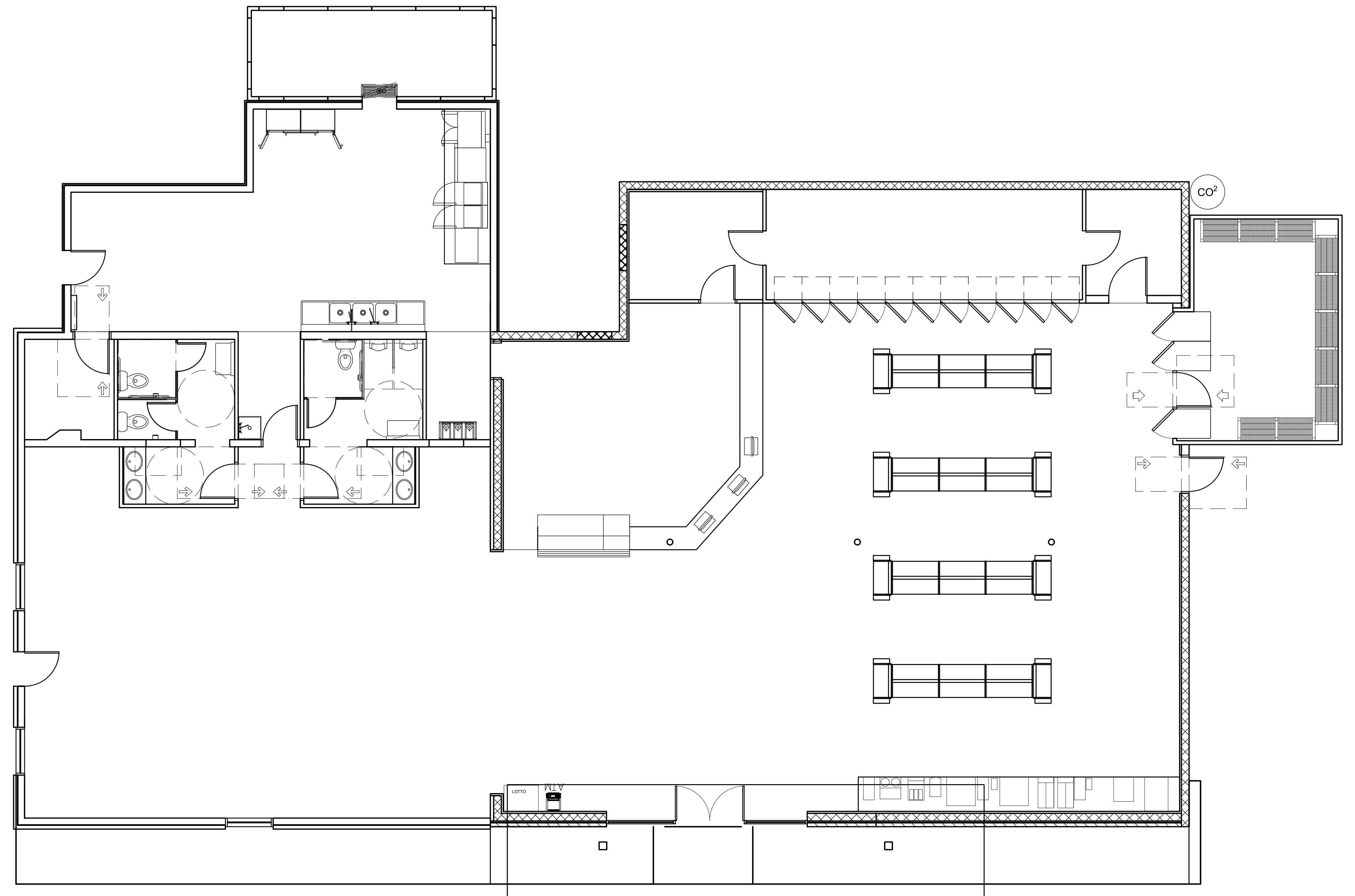
DEMOLITION PLAN
D1.01

LIFE SAFETY PATHWAYS

LOCATION	COMMON PATH	TOTAL TRAVEL DISTANCE							
		DOOR NUMBER							
		EXIT ###	EXIT ###	EXIT ###	EXIT ###	EXIT ###	EXIT ###	EXIT ###	EXIT ###
1	A	-	-	-	-	-	-	-	-
2	B	-	-	-	-	-	-	-	-
3	D	-	-	-	-	-	-	-	-
4	E	-	-	-	-	-	-	-	-
5	C	-	-	-	-	-	-	-	-
6	F	-	-	-	-	-	-	-	-
7	G	-	-	-	-	-	-	-	-
8	I	-	-	-	-	-	-	-	-
9	J	-	-	-	-	-	-	-	-
10	H	-	-	-	-	-	-	-	-
11	C	-	-	-	-	-	-	-	-

PATHWAY KEY PLAN:

- : TRAVEL PATH W/ DIRECTION OF FLOW
- ⊕ : TRAVEL PATH STARTING LOCATION, WHERE "#" = LOCATION COLUMN IN THIS TABLE.
- ⊕ : COMMON PATH LOCATION, WHERE "#" = LOCATION COLUMN IN THIS TABLE.
- ⊕ : EXIT DOOR LOCATION, WHERE "#" = DOOR IN THIS TABLE AND IN DOOR FINISH SCHEDULE.



01 LIFE SAFETY PLAN

SCALE: 3/32" = 1'-0"

CATEGORY	CODE REFERENCE	REQUIREMENT/DESIGNATION	PROVIDED
CONSTRUCTION TYPE	TABLE 506.2		
OCCUPANCY GROUPS	TABLE 304.1		
OCCUPANCY LOAD	TABLE 1004.1.2		OCCUPANTS
ALLOWABLE AREA	TABLE 506.2	TOTAL OCCUPANTS	OCCUPANTS S.F.
EXIT CALCULATIONS	SECTION 1006.3.2	COMMON PATH OF EGRESS TRAVEL GROUP	## FT
	SECTION 1017 TABLE 1017.2	EXIT ACCESS TRAVEL DISTANCE	## FT
NON-SEPERATED OCCUPANCIES	TABLE 508.4	NO SEPARATION BETWEEN GROUP AND GROUP	

TYPE	DESCRIPTION	MODEL#	BULBS
ER ▽	EMERGENCY REMOTE HEAD	LITHONIA #ELA-NX-H0606	INCLUDED
EM ⊕	EMERGENCY LIGHT W/ BATTERY PACK REMOTE HEAD WHERE SHOWN	LITHONIA #6ELM2P	INCLUDED
EXM ⊕	COMBINATION EXIT/EMERGENCY FIXTURE W/ BATTERY PACK	LITHONIA #LHQM-S-W-1-R-120/277-HO	INCLUDED

NOTE: EXIT EMERGENCY LIGHTING IS ON AN "NL" CIRCUIT

Keyes Architects and Associates expressly reserve its common law copyright and other property rights in these documents. These documents are considered proprietary information and shall not be upgraded, changed or copied in any form or matter whatsoever nor are they to be assigned to any third party without first obtaining the express written permission and consent of Keyes Architects and Associates, 4717 Preston Highway, Louisville, Kentucky 40213

LIFE SAFETY PLAN

LS1.01

PROJECT: ROOSTER RUN - FILE: LS1.01 Life Safety Plan.dwg - DATE: May 25, 2023 1:52PM - BY: DEBBY BIRD

PROJECT NO:
23-4433

DRAWN BY:
DLB/

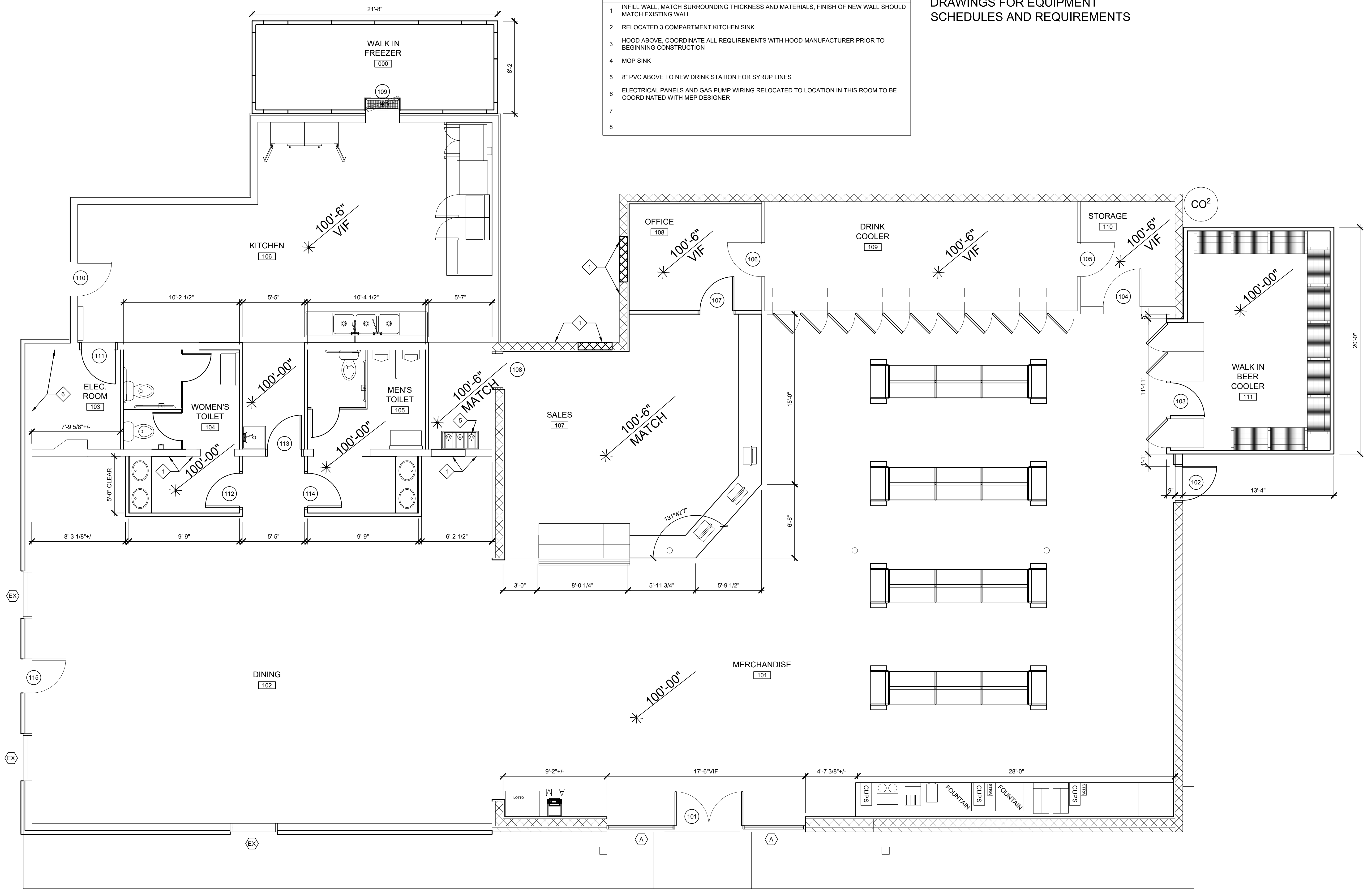
DATE:

RENOVATION
ROOSTER RUN
 6515 NEW SHEPHERDSVILLE RD
 COX CREEK, KY 40013
KEYES ARCHITECTS & ASSOCIATES
 4717 PRESTON HIGHWAY
 LOUISVILLE, KENTUCKY 40213 (502) 636-5113

SHEET NOTES:

- 1 INFILL WALL, MATCH SURROUNDING THICKNESS AND MATERIALS, FINISH OF NEW WALL SHOULD MATCH EXISTING WALL
- 2 RELOCATED 3 COMPARTMENT KITCHEN SINK
- 3 HOOD ABOVE, COORDINATE ALL REQUIREMENTS WITH HOOD MANUFACTURER PRIOR TO BEGINNING CONSTRUCTION
- 4 MOP SINK
- 5 8" PVC ABOVE TO NEW DRINK STATION FOR SYRUP LINES
- 6 ELECTRICAL PANELS AND GAS PUMP WIRING RELOCATED TO LOCATION IN THIS ROOM TO BE COORDINATED WITH MEP DESIGNER
- 7
- 8

NOTE: SEE EQUIPMENT PROVIDER DRAWINGS FOR EQUIPMENT SCHEDULES AND REQUIREMENTS



01 PROPOSED FLOOR PLAN
SCALE: 1/4" = 1'-0"

NOTE: ALL DIMENSIONS ARE TO FACE OF STUD
NOTE: GENERAL CONTRACTOR RESPONSIBLE FOR COORDINATION OF ALL SUB TRADES AND REQUIREMENTS BY OWNER
NOTE: ELECTRICAL, HVAC AND PLUMBING TO BE RELOCATED PER FEDERAL, STATE AND LOCAL CODES. GENERAL CONTRACTOR TO COORDINATE.

Keyes Architects and Associates expressly reserve its common law copyright and other property rights in these documents. These documents are considered proprietary information and shall not be upgraded, changed or copied in any form or matter whatsoever nor are they to be assigned to any third party without first obtaining the express written permission and consent of Keyes Architects and Associates, 4717 Preston Highway, Louisville, Kentucky 40213

PROJECT: ROOSTER RUN - FILE: A1.01 Floor Plan.dwg - DATE: May 25, 2023 1:54PM - BY: DEBBY BIRD

KEYES ARCHITECTS & ASSOCIATES
4717 PRESTON HIGHWAY
LOUISVILLE, KENTUCKY 40213 (502) 636-5113

RENOVATION
ROOSTER RUN
6515 NEW SHEPHERDSVILLE RD
COX CREEK, KY 40013

NOT FOR CONSTRUCTION

PROPOSED CONSTRUCTION

PROPOSED CONSTRUCTION

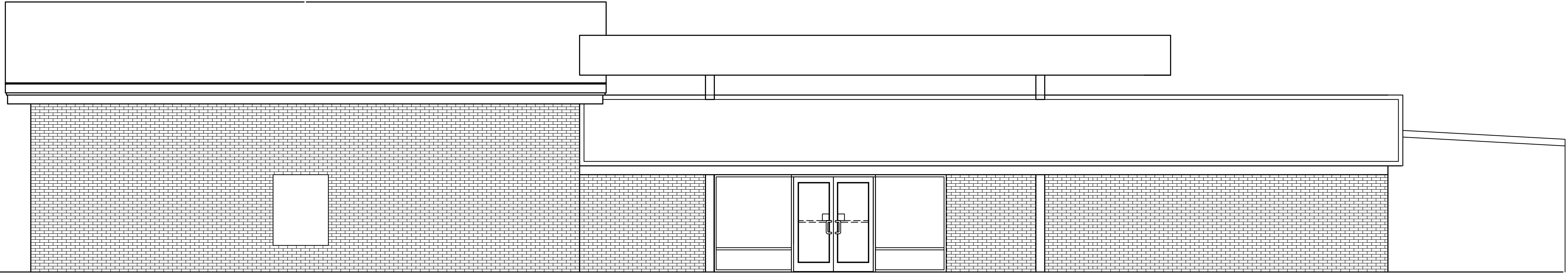
PROPOSED CONSTRUCTION

KEYES ARCHITECTS & ASSOCIATES
4717 PRESTON HIGHWAY
LOUISVILLE, KENTUCKY 40213 (502) 636-5113

RENOVATION
ROOSTER RUN
6515 NEW SHEPHERDSVILLE RD
COX CREEK, KY 40013

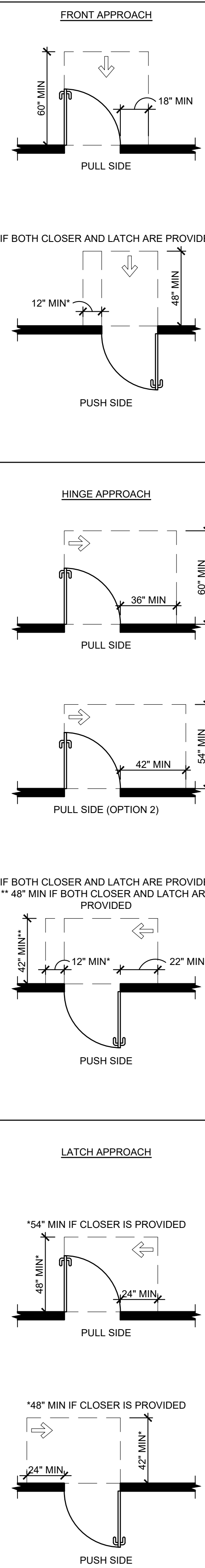
EXTERIOR ELEVATIONS

A2.01



01 PROPOSED FRONT ELEVATION
SCALE: 1/4" = 1'-0"

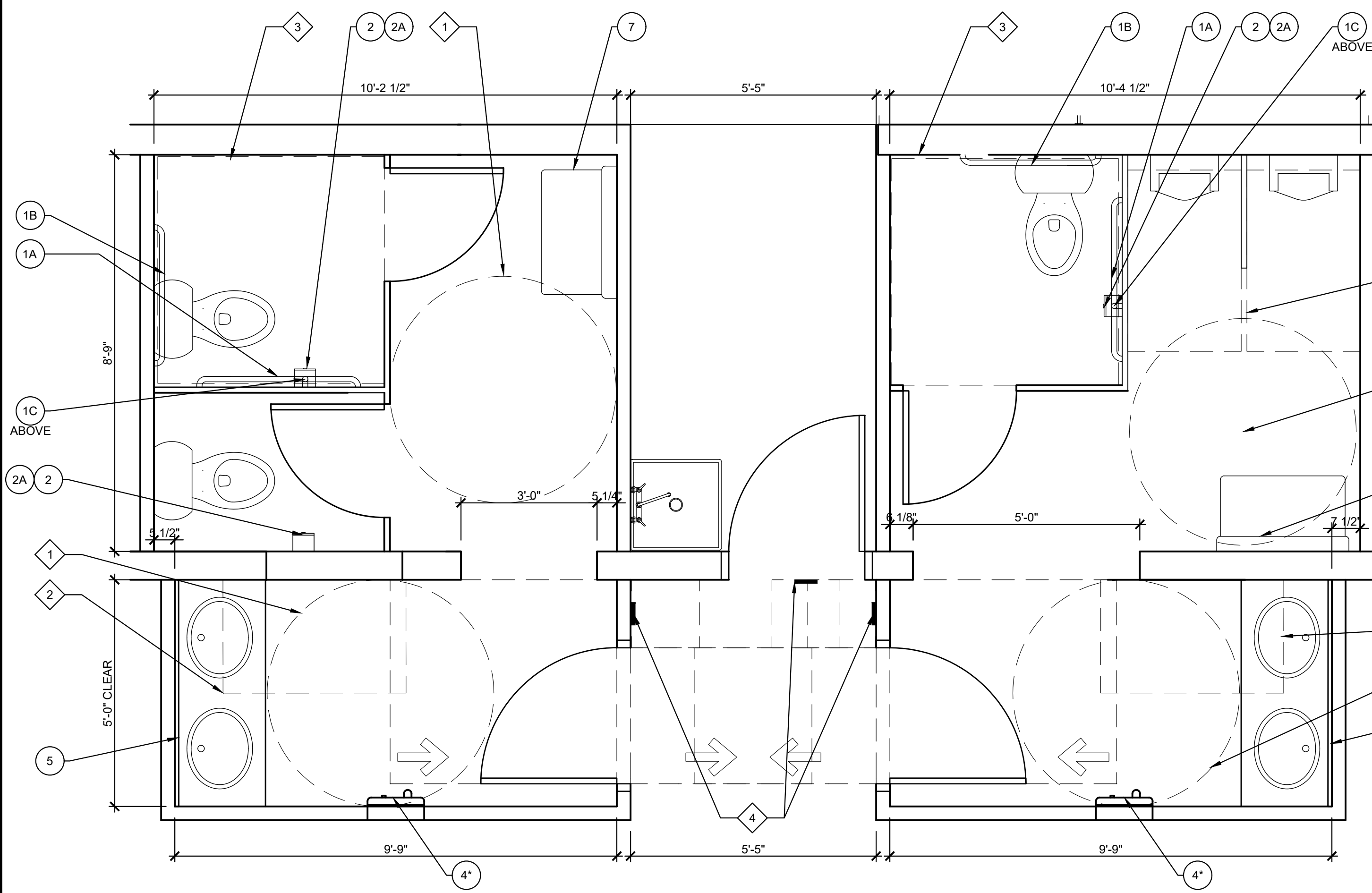
REQUIRED DOOR ACCESSIBLE CLEAR FLOOR SPACE



REQUIRED ACCESSIBLE CLEAR FLOOR SPACE

NOTE SYMBOL

TYPICAL CLEAR FLOOR SPACES	
1	TURNAROUND / TURNING CIRCLE: 60" DIAMETER CLEAR FLOOR SPACE (TYP.)
2	EQUIPMENT / FIXTURE: 30"x48" CLEAR FLOOR SPACE
3	TOILET WITH 9" TOE CLEARANCE: 60"x60" CLEAR FLOOR SPACE
4	ACCESSIBLE SIGNAGE - SEE DETAIL 04/A3.01 FOR MORE INFORMATION



01 TOILET ROOM PLAN
SCALE: 1/2" = 1'-0"

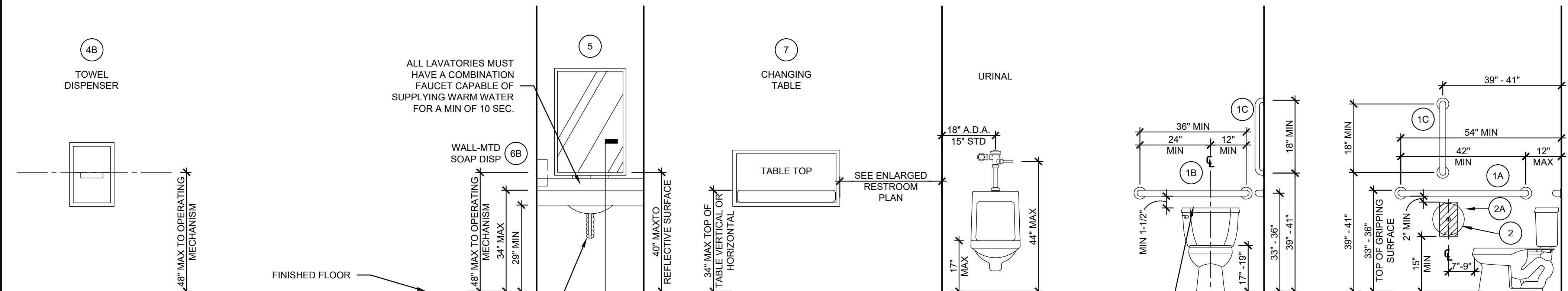
MEETS THE STRICTEST INTERPRETATION OF BOTH THE ANSI 117.1 AND 2010 FEDERAL ADA STANDARDS FOR ACCESSIBLE DESIGN

NOTE:
NOT ALL ITEMS LISTED ON THIS SHEET WILL APPLY TO THIS PROJECT. IF THERE ARE ANY QUESTIONS OR COMMENTS CONTACT KEYES ARCHITECTS AND ASSOCIATES.

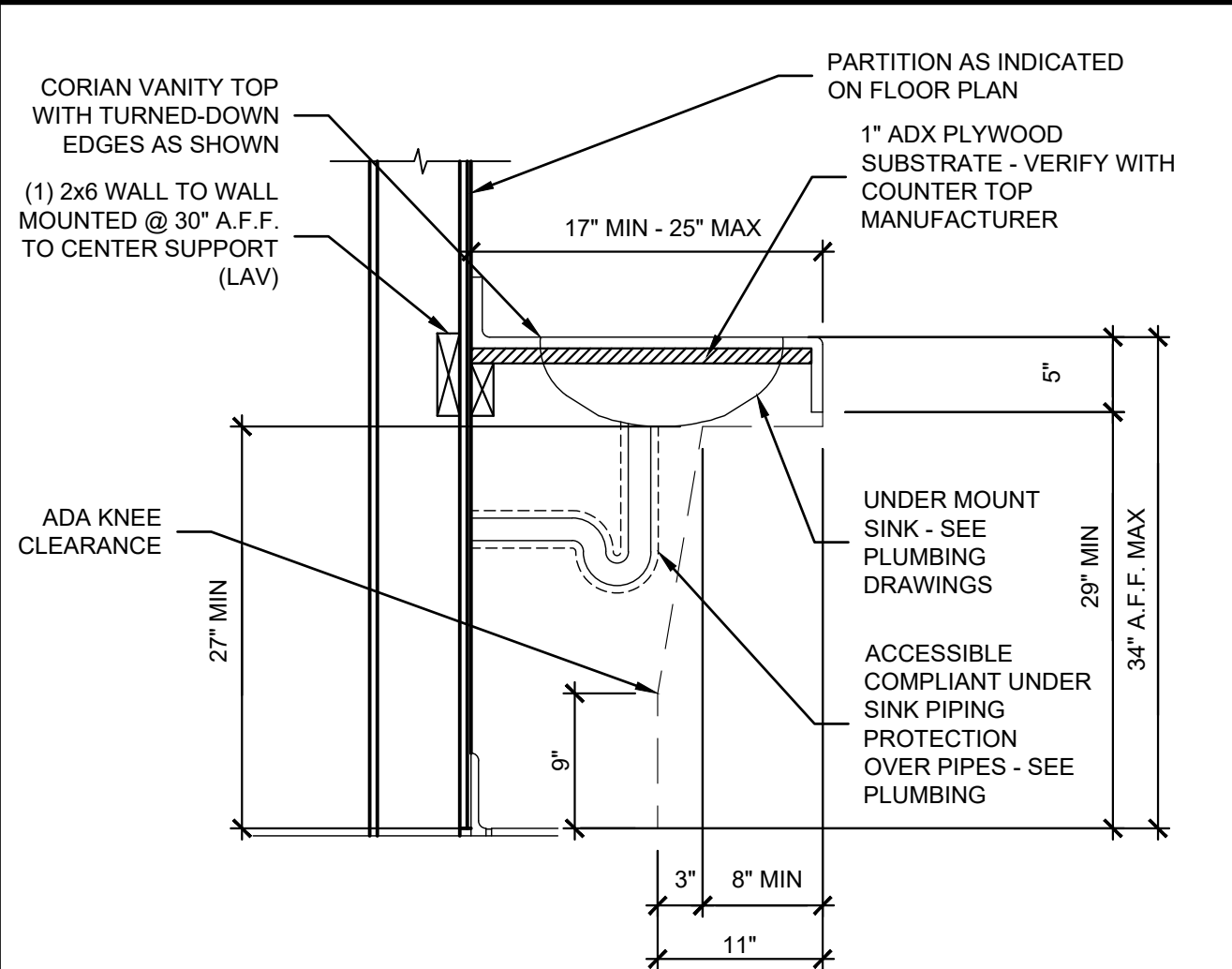
RESTROOM ACCESSORIES SCHEDULE

ITEM (SEE NOTE 2)	MODEL #	SUPPLIER	BACKUP SUPPORT (SEE NOTE 3)
1A	GRAB BAR 42"	SEE SPECS.	SEE SPECS. FOR RECOMMENDED MANUFACTURERS
1B	GRAB BAR 36"	SEE SPECS.	SEE SPECS. FOR RECOMMENDED MANUFACTURERS
1C	GRAB BAR 24" (18" MIN)	SEE SPECS.	SEE SPECS. FOR RECOMMENDED MANUFACTURERS
2	TOILET TISSUE DISPENSER, DOUBLE, SURFACE MOUNTED (SEE NOTE 4)	SEE SPECS.	SEE SPECS. FOR RECOMMENDED MANUFACTURERS
2A	JUMBO TOILET TISSUE DISPENSER (OPTIONAL)	SEE SPECS.	SEE SPECS. FOR RECOMMENDED MANUFACTURERS
4A	HAND DRYER, RECESSED, ADA, WHITE-OTHER COLORS AT ADDITIONAL COST	SEE SPECS.	SEE SPECS. FOR RECOMMENDED MANUFACTURERS
4B	TOWEL DISPENSER & WASTE RECEPTACLE, INDIVIDUAL RECESSED (OPTIONAL)	SEE SPECS.	SEE SPECS. FOR RECOMMENDED MANUFACTURERS
4C	TOWEL DISPENSER & WASTE RECEPTACLE, COMBINATION, RECESSED (OPTIONAL)	SEE SPECS.	SEE SPECS. FOR RECOMMENDED MANUFACTURERS
5	MIRROR, CHANNEL FRAME	SEE SPECS.	SEE SPECS. FOR RECOMMENDED MANUFACTURERS
6A	SOAP DISPENSER, COUNTER MOUNTED, 6" SPOUT (OPTIONAL)	SEE SPECS.	SEE SPECS. FOR RECOMMENDED MANUFACTURERS
6B	SOAP DISPENSER, WALL-MOUNTED	SEE SPECS.	SEE SPECS. FOR RECOMMENDED MANUFACTURERS
7	BABY CHANGE TABLE, ACCESSIBLE COMPLIANT	SEE SPECS.	SEE SPECS. FOR RECOMMENDED MANUFACTURERS

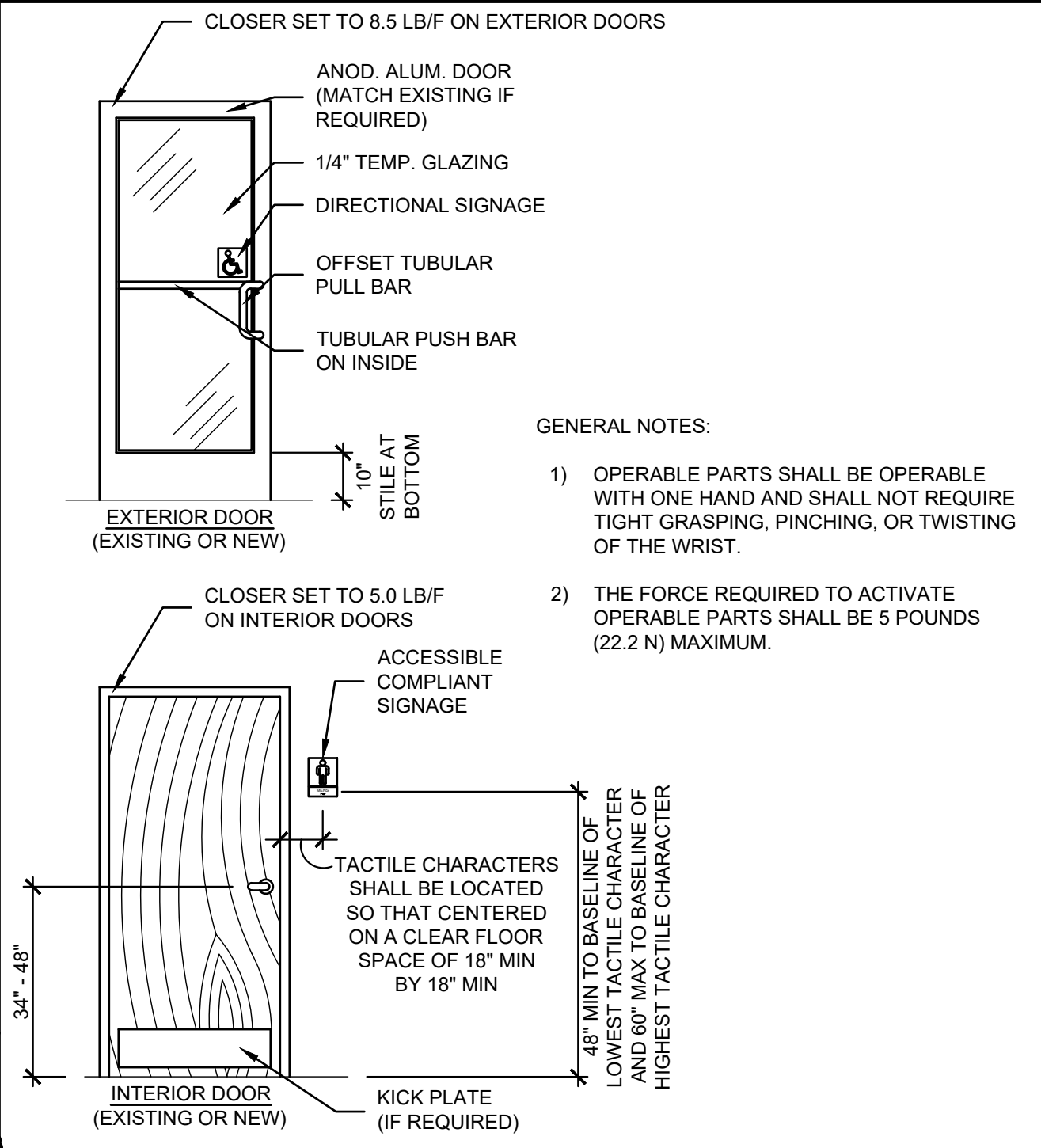
- NOTES:**
- SEE BELOW FOR ACCESSORY MOUNTING HEIGHTS
 - SELECT ONE ITEM FROM ITEM GROUPS 2, 4 & 6. VERIFY WITH OWNER.
 - CUT BACK-UP SUPPORTS BETWEEN STUDS SO FACE OF SUPPORT IS FLUSH WITH WALL STUD
 - HATCHED AREA SHOWN FOR MOUNTING LOCATION
 - 48" MAX TO TOP OF COAT HOOK



02 TYPICAL ACCESSIBLE RESTROOM DETAILS
SCALE: 1/2" = 1'-0"



03 LAVATORY DETAIL
SCALE: 1" = 1'-0"



04 DOOR SIGN / DOOR DETAIL
SCALE: 3/8" = 1'-0"

PROJECT NO: 23-4433
DRAWN BY: DLB/
DATE: ---

PROFESSIONAL ARCHITECTS
KEYES ARCHITECTS & ASSOCIATES
 4717 PRES ON HIGHWAY
 LOUISVILLE, KENTUCKY 40213 (502) 636-5113

RENOVATION
ROOSTER RUN
 6515 NEW SHEPHERDSVILLE RD
 COX CREEK, KY 40013

Keyes Architects and Associates expressly reserve its common law copyright and other property rights in these documents. These documents are considered proprietary information and shall not be upgraded, changed or copied in any form or matter whatsoever nor are they to be assigned to any third party without first obtaining the express written permission and consent of Keyes Architects and Associates, 3005 Taylor Boulevard, Louisville, Kentucky 40208

COMMERCIAL ADA-ANSI GUIDELINES
A3.01

PROJECT: ROOSTER RUN - FILE: A3.01 Commercial ADA-Ansi Guidelines.dwg - DATE: May 29, 2023 1:56PM - BY: DEBBY BIRD

ROOM FINISH SCHEDULE							
ROOM #	ROOM NAME	FLOOR	BASE	WALLS	CEILING MTL	CEILING HGT	REMARKS
101	MERCHANDISE			GYP. BD.			
102	DINING			GYP. BD.			
103	ELECTRICAL ROOM			GYP. BD.			
104	WOMENS TOILET			GYP. BD.			
105	MENS TOILET			GYP. BD.			
106	KITCHEN			GYP. BD.			
107	SALES			GYP. BD.			
108	OFFICE			GYP. BD.			
109	DRINK COOLER			GYP. BD.			
110	STORAGE			GYP. BD.			
111	WALK IN BEER COOLER			GYP. BD.			
112	WALK IN FREEZER			GYP. BD.			

FINISH SCHEDULE KEY	
CARPET	GLUE DOWN PILE CARPET
VCT	VINYL COMPOSITE TILE - SEE SPECIFICATIONS
CERAMIC TILE	VERIFY SIZES AND STYLE WITH OWNER
CONCRETE	SEALED CONCRETE FLOOR - SEE SPECIFICATIONS
CEILING #1	2'x2' LAY-IN RECESSED WHITE GRID WITH ACOUSTICAL TILE - SEE SPECIFICATIONS
CEILING #2	2'x4' LAY-IN RECESSED WHITE GRID WITH ACOUSTICAL TILE - SEE SPECIFICATIONS
CEILING #3	2'x4' LAY-IN FLUSH WHITE GRID WITH VINYL FACED TILE - SEE SPECIFICATIONS
WALL #1	CERAMIC TILE AND PAINT ABOVE - VERIFY HEIGHT WITH OWNER
WALL #2	CARPET WAINSCOT WITH CHAIR-RAIL @4'-0" A.F.F. WITH ACOUSTICAL FABRIC ABOVE. COORDINATE WITH OWNER
WALL #3	PAINT WITH CHAIR-RAIL AT 42" A.F.F. WITH PAINT ABOVE - PAINT SELECTED BY OWNER - SEE SPECIFICATIONS

ROOM FINISH REMARKS

- REMARK SAMPLE
- REMARK SAMPLE 2

DOOR SCHEDULE							
NUMBER	SIZE	FIRE	MATERIAL	FRAME	HARDWARE	DETAILS	REMARKS
101	PAIR 3'-0" X 7'-0"	-	ALUMGLASS	ALUM			1
102	3'-0" X 7'-0"	-	H.M.	METAL			
103	3'-0" X 7'-0"	-	PER MANUF.	PER MANUF.	PER MANUF.		2
104	3'-0" X 7'-0"	-	EXISTING	EXISTING	EXISTING		
105	3'-0" X 7'-0"	-	EXISTING	EXISTING	EXISTING		
106	3'-0" X 7'-0"	-	EXISTING	EXISTING	EXISTING		
107	3'-0" X 7'-0"	-	H.M.	METAL			
108	3'-0" X 7'-0"	-	CASED OPENING				
109	3'-0" X 7'-0"	-	PER MANUF.	PER MANUF.	PER MANUF.		2
110	3'-0" X 7'-0"	-	EXISTING	EXISTING	EXISTING		
111	3'-0" X 7'-0"	-	EXISTING	EXISTING	EXISTING		
112	3'-0" X 7'-0"	-	H.M.	METAL			
113	3'-0" X 7'-0"	-	H.M.	METAL			
114	3'-0" X 7'-0"	-	H.M.	METAL			
115	3'-0" X 7'-0"	-	EXISTING	EXISTING	EXISTING		

DOOR HARDWARE SCHEDULE

*NRP = NON-REMOVABLE PIN

- 2 PR. PIVOTS
2 PR. PUSH/PULLS
1 DEADBOLT (THUMB TURN INSIDE)
1 PR. FLUSH BOLTS
2 CLOSERS
1 WEATHERSTRIP SET
1 THRESHOLD
- 1-1/2 PR. HINGES
1 ENTRANCE SET
1 WALL STOP
- 1-1/2 PR. HINGES
1 STOREROOM SET
1 HINGE STOP

DOOR SCHEDULE REMARKS

- DOOR PART OF ALUMINUM STOREFRONT SYSTEM (SEE SPECIFICATIONS)
- PART OF THE WALK IN COOLER ASSEMBLY - COORDINATE REQUIREMENTS WITH MANUFACTURER

WINDOW SCHEDULE						
LETTER	SIZE	SILL HEIGHT	GLAZING	FRAME	DETAILS	REMARKS
A		0'-0"	1" TEMPERED	ALUM		1

WINDOW SCHEDULE REMARKS

- PART OF THE STOREFRONT SYSTEM, SEE DOOR SCHEDULE

NOT FOR CONSTRUCTION

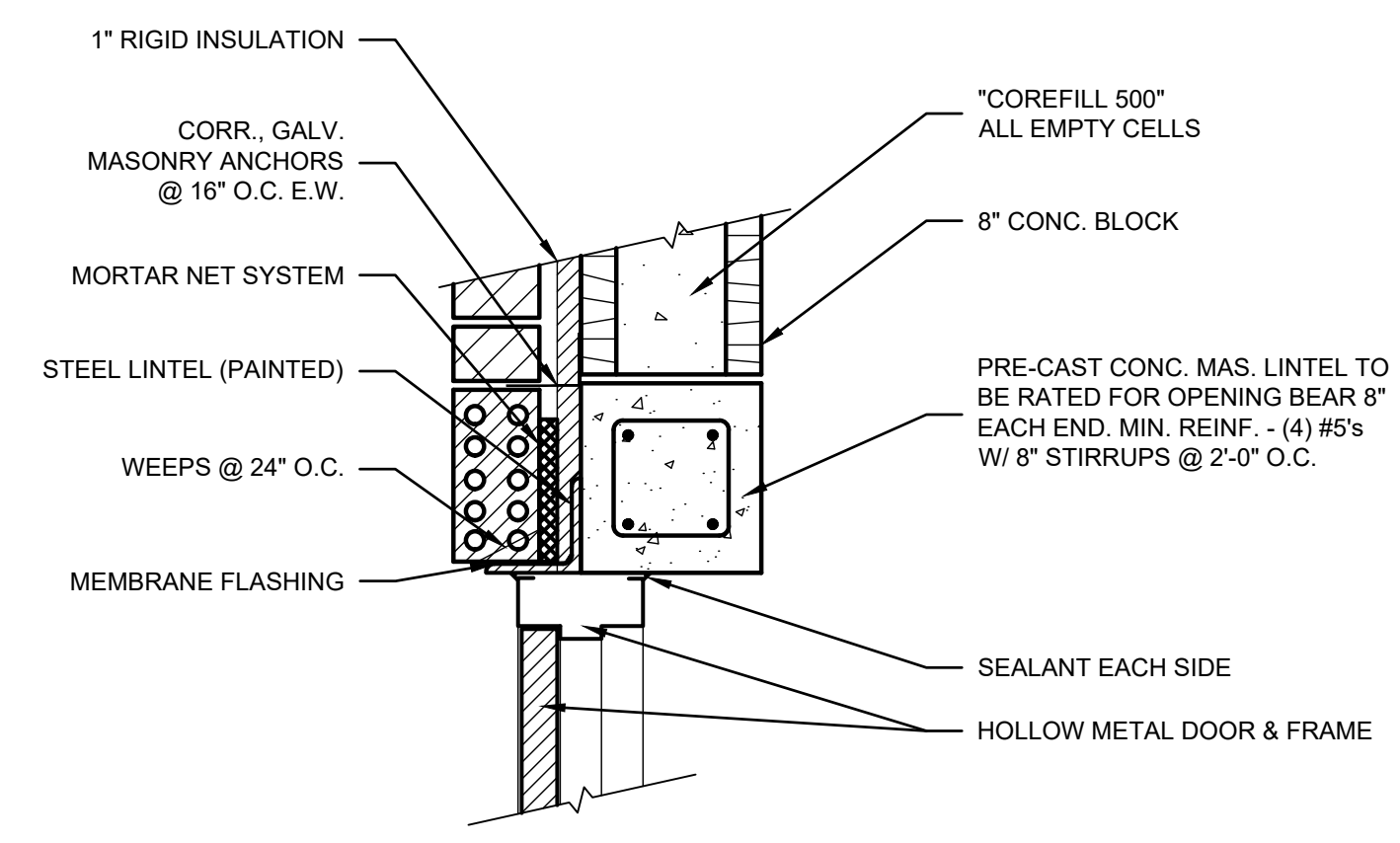


RENOVATION
ROOSTER RUN
6515 NEW SHEPHERDSVILLE RD
COX CREEK, KY 40013

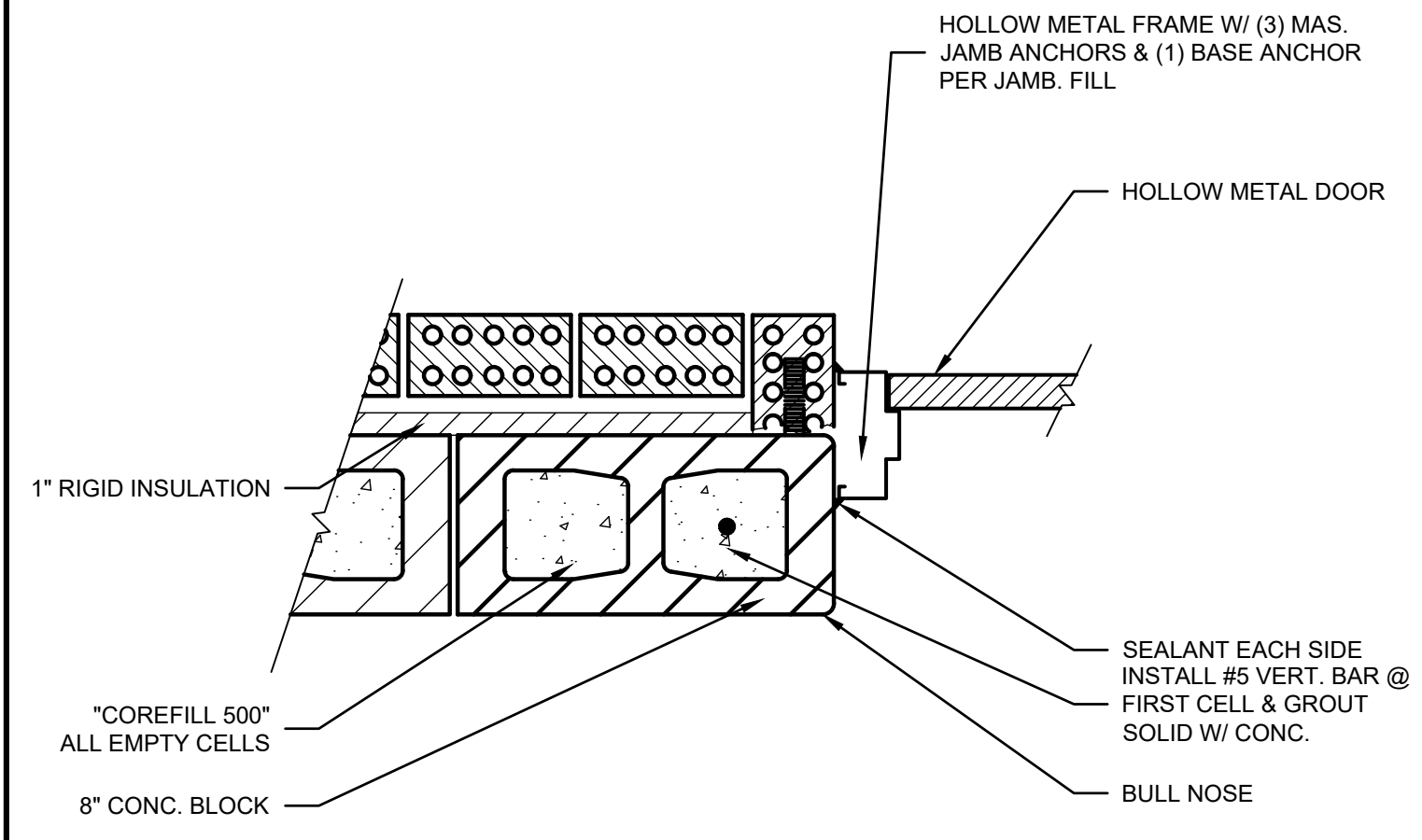
Keyes Architects and Associates expressly reserve its common law copyright and other property rights in these documents. These documents are considered proprietary information and shall not be upgraded, changed or copied in any form or matter whatsoever nor are they to be assigned to any third party without first obtaining the express written permission and consent of Keyes Architects and Associates, 4717 Preston Highway, Louisville, Kentucky 40213

WALL SECTIONS AND DETAILS

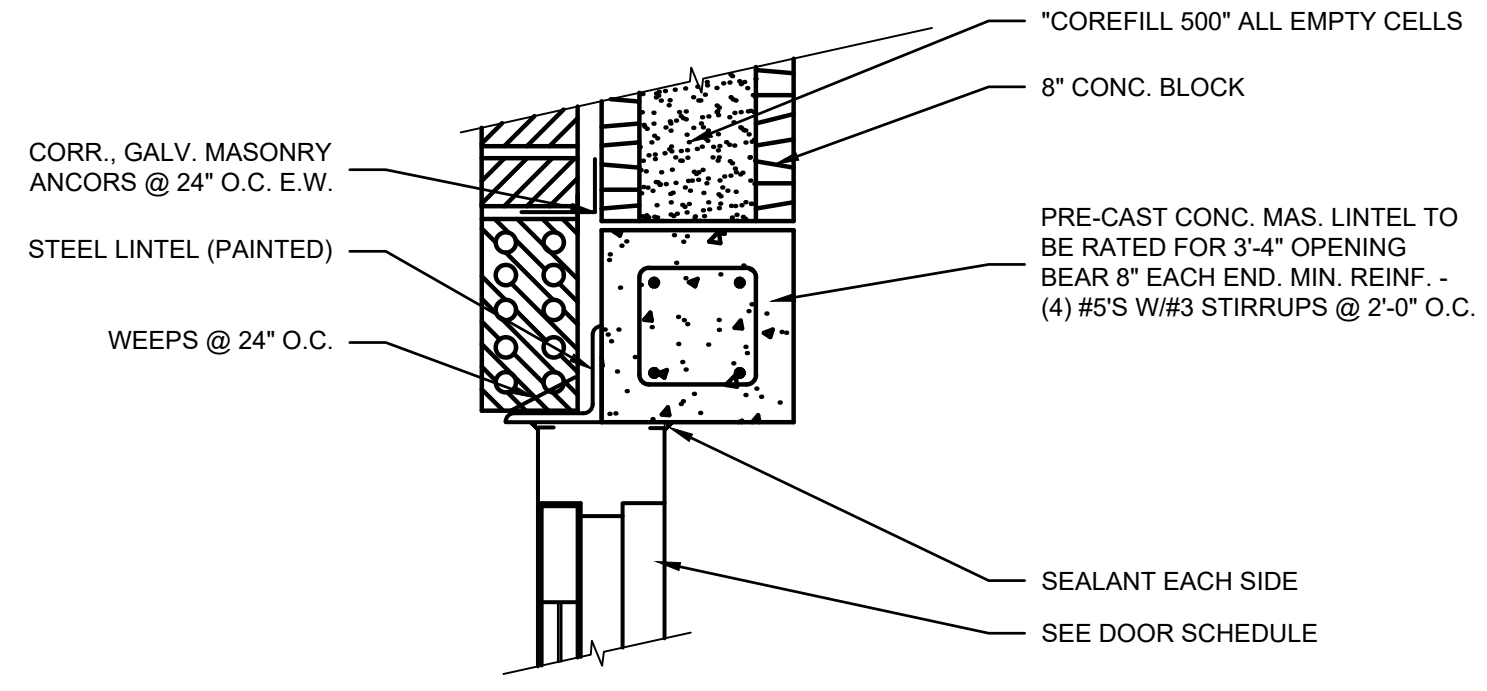
A5.01



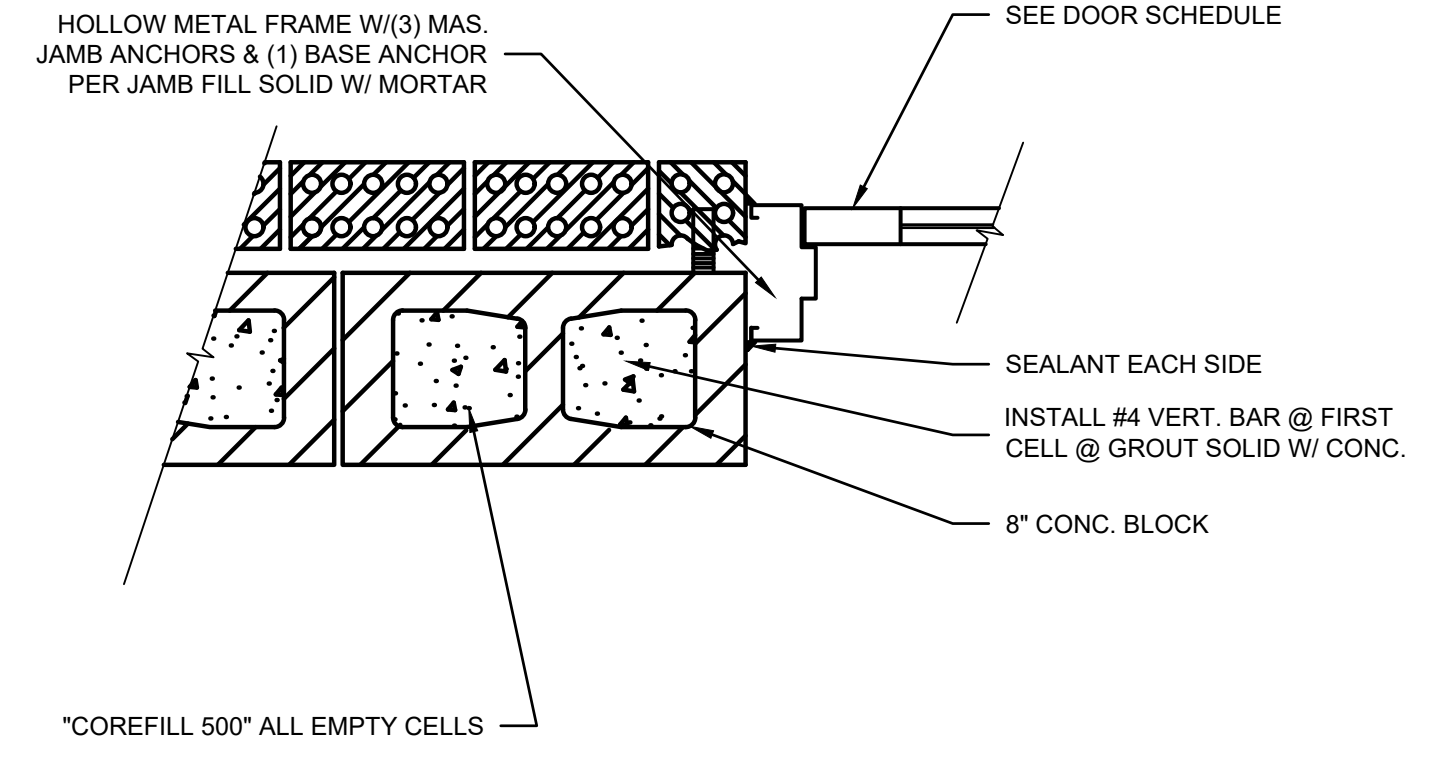
00 HOLLOW METAL DOOR HEAD
SCALE: 1-1/2" = 1'-0"



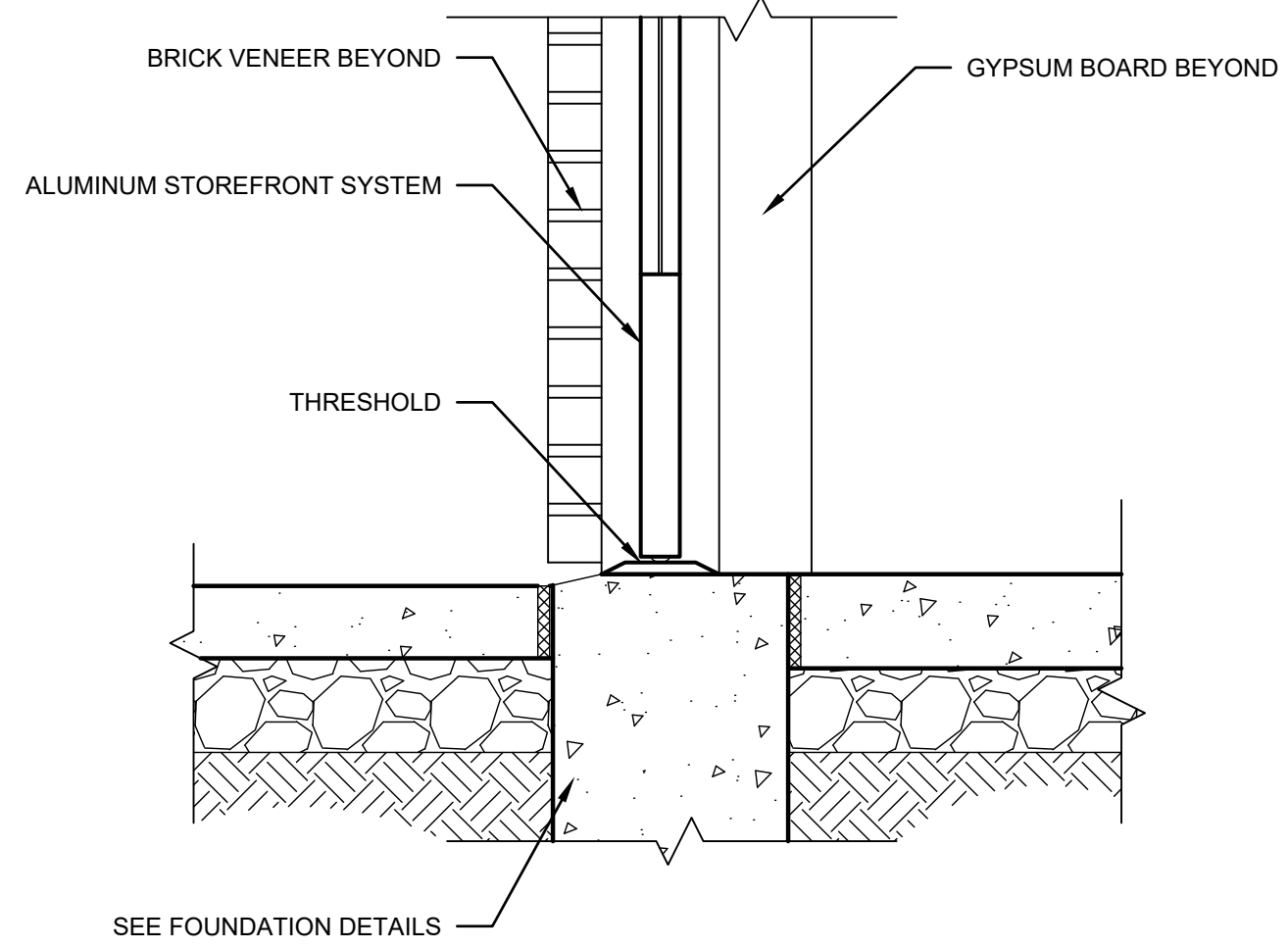
00 HOLLOW METAL DOOR JAMB
SCALE: 1-1/2" = 1'-0"



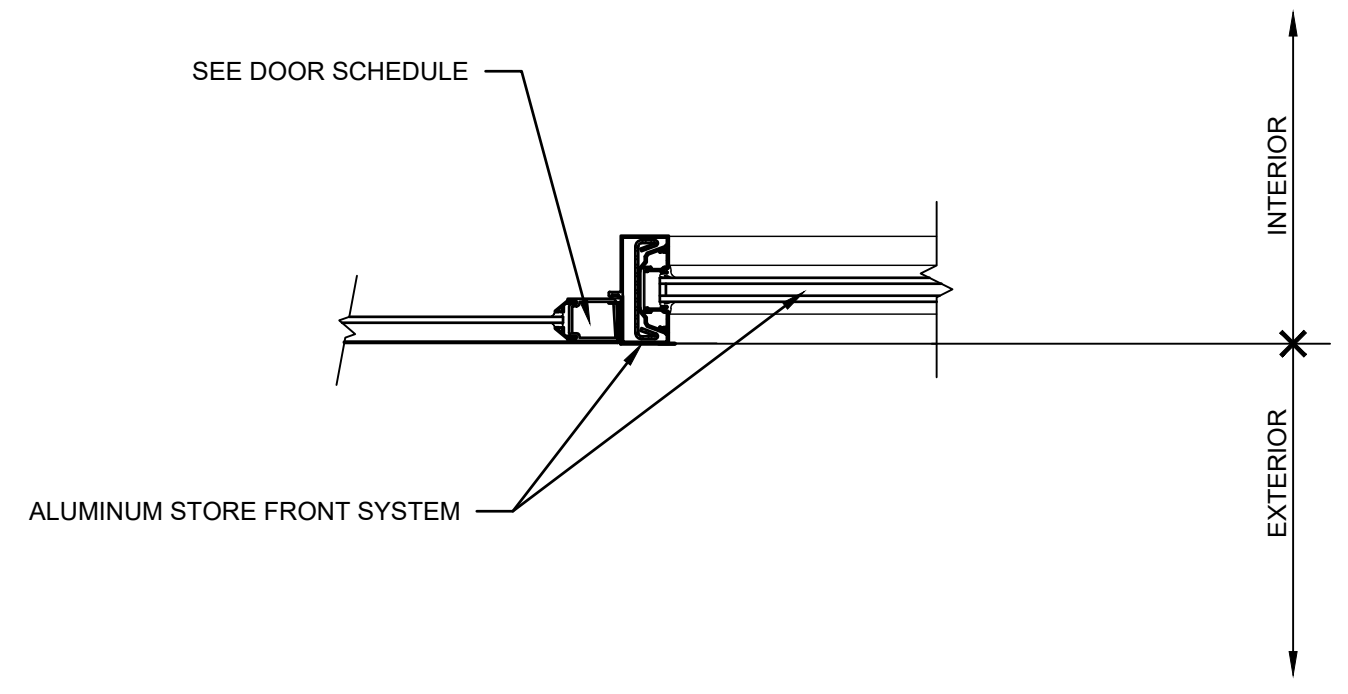
ALUMINUM DOOR HEAD
SCALE: 1-1/2" = 1'-0"



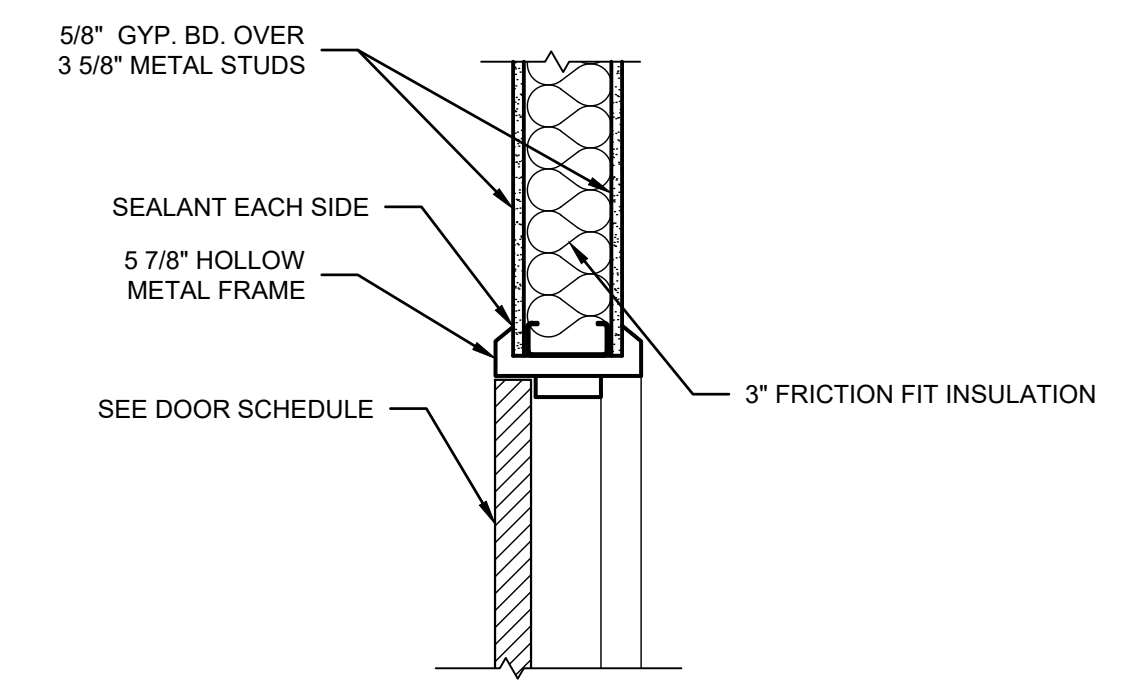
ALUMINUM DOOR JAMB
SCALE: 1-1/2" = 1'-0"



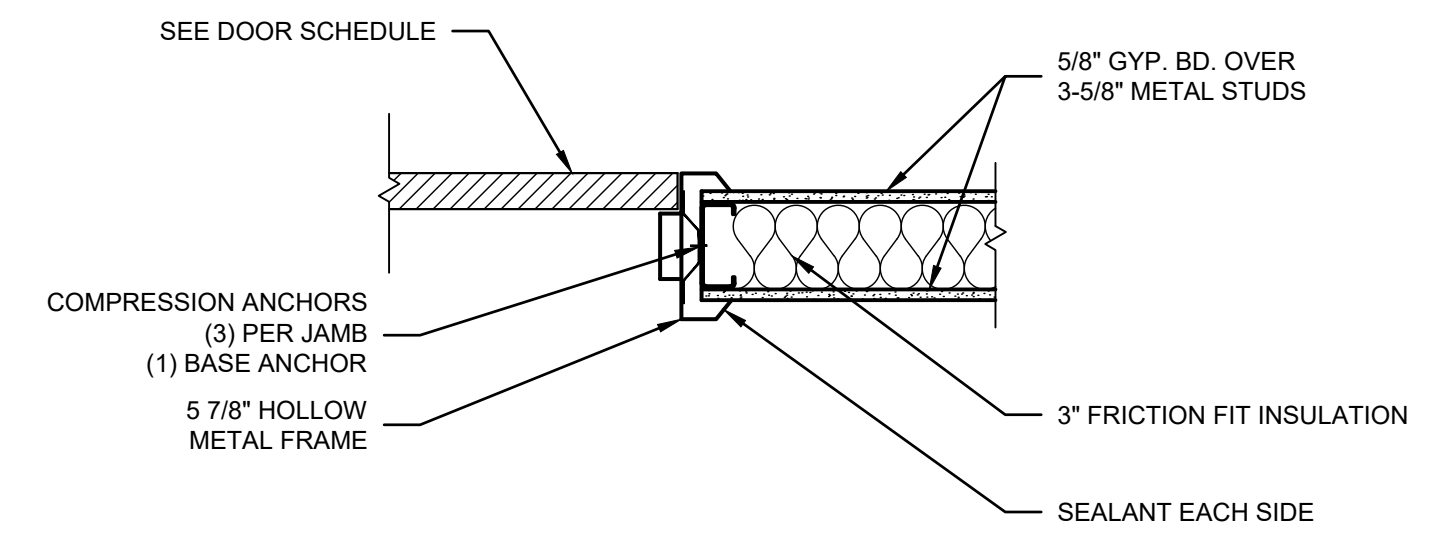
00 THRESHOLD DETAIL
SCALE: 1-1/2" = 1'-0"



XX ALUMINUM DOOR JAMB
SCALE: 1-1/2" = 1'-0"



00 HOLLOW METAL DOOR HEAD
SCALE: 1-1/2" = 1'-0"



00 HOLLOW METAL DOOR JAMB
SCALE: 1-1/2" = 1'-0"

PROJECT: ROOSTER RUN - FILE: A6.01 Door Details.dwg - DATE: May 25, 2023 2:05PM - BY: DEBBY BIRD

PROFESSIONAL ARCHITECTS & ASSOCIATES
 4717 PRESTON HIGHWAY
 LOUISVILLE, KENTUCKY 40213 (502) 636-5113

RENOVATION
ROOSTER RUN
 6515 NEW SHEPHERDSVILLE RD
 COX CREEK, KY 40013

Keyes Architects and Associates expressly reserve its common law copyright and other property rights in these documents. These documents are considered proprietary information and shall not be upgraded, changed or copied in any form or matter whatsoever nor are they to be assigned to any third party without first obtaining the express written permission and consent of Keyes Architects and Associates, 4717 Preston Highway, Louisville, Kentucky 40213

PROJECT #: PROJECT NUMBER

GENERAL NOTES AND SPECIFICATIONS

01000 GENERAL

A. THESE DRAWINGS AND SPECIFICATIONS ARE FOR GENERAL GUIDANCE, WITH THE UNDERSTANDING THAT THE OWNER WILL NEGOTIATE DIRECTLY WITH A CONTRACTOR FOR PROPER EXECUTION OF WORK TO ASSURE COMPLETENESS AND CODE COMPLIANCE.

B. ALL CONTRACTORS ARE TO GUARANTEE THEIR WORK FOR A MINIMUM OF ONE YEAR FROM DATE OF ACCEPTANCE AND TURNOVER OF A COMPLETED PROJECT. LONGER GUARANTEES ARE REQUIRED WHERE SPECIFIED ELSEWHERE IN THESE DOCUMENTS .

C. CONTRACTOR TO VERIFY THE INFORMATION CONTAINED IN THESE PLANS IN FIELD (V.I.F.) AND IMMEDIATELY NOTIFY THE ARCHITECT OF ANY DISCREPANCIES.

D. THE CONTRACTOR SHALL CAREFULLY STUDY AND COMPARE THESE CONTRACT DOCUMENTS AND SHALL AT ONCE REPORT AND DISCOVERED ITEMS TO THE OWNER AND ARCHITECT ANY ERRORS, INCONSISTENCY , OR OMISSIONS THAT CANNOT BE RESOLVED BY STANDARD INDUSTRY PRACTICES . DO NOT PROCEED WITH WORK UNTIL CLARIFICATIONS HAVE BEEN MADE BY THE ARCHITECT AND NOTIFICATION HAS BEEN GIVEN TO PROCEED .

E. KEYES ARCHITECTS & ASSOCIATES HAS A SET NUMBER OF DRAWING SETS THAT WE HAVE GUARANTEED THE OWNER / CLIENT BY CONTRACT. THESE DOCUMENTS ARE THE OWNER'S / CLIENT'S TO USE AS THEY SEE FIT BUT IT WAS INTENDED FOR THEIR USE TO CREATE ADDITIONAL DOCUMENTS AND FOR PERMITTING PURPOSES. IN ADDITION, KEYES WILL SUPPLY AT NO ADDITIONAL CHARGE A PDF SET OF THE SUPPLIED PAPER SET OF DRAWINGS TO THE OWNER / CLIENT. ANY ADDITIONAL SETS BEYOND THE SETS SUPPLIED WILL BE CONSIDERED EXTRAS AND WILL BE BILLED ACCORDINGLY BY KEYES ARCHITECTS & ASSOCIATES CURRENT RATES TABLE. IT IS THE RESPONSIBILITY OF THE GENERAL CONTRACTOR TO ACQUIRE THIS PDF SET FROM THE OWNER FOR THE PURPOSES OF MAKING ADDITIONAL SETS AND TO PAY FOR ALL NEEDED CONSTRUCTION SETS.

F. BEFORE BIDDING, GENERAL CONTRACTOR AND ALL SUBCONTRACTORS ARE RESPONSIBLE FOR OBTAINING ALL BID DOCUMENTS INCLUDING BUT NOT LIMITED TO CONSTRUCTION DOCUMENTS AND SPECIFICATIONS. CONTRACTOR IS RESPONSIBLE FOR REVIEWING OTHER TRADES WORK THAT DIRECTLY AFFECTS THEIR TRADE, TO ENSURE THAT NO CONFLICT IS PRESENT. SHOULD A CONFLICT ARISE AS A RESULT OF DESIGN DIFFERENCE WITH OTHER TRADES, SUBCONTRACTOR SHOULD USE INDUSTRY STANDARD PRACTICES TO BID AND CREATE A PRODUCT TO ACCOMPLISH THE DESIGN INTENT OF THE CONSTRUCTION DOCUMENTS AND INCLUDE IT AS PART OF THEIR BID. THEN THE GENERAL CONTRACTOR SHALL BE NOTIFIED OF THE INTENDED CHANGES IN ORDER THAT THESE CHANGES CAN BE DISCUSSED WITH THE ARCHITECT AND COORDINATED WITH OTHER TRADES THAT ARE AFFECTED.

G. WHERE DRAWINGS DO NOT SPECIFICALLY SHOW HOW WORK IS TO BE EXECUTED, THE SUBCONTRACTOR RESPONSIBLE FOR THE WORK WILL BE RESPONSIBLE FOR FIGURING OUT AND BIDDING AN ACCEPTABLE INDUSTRY STANDARD METHOD OF COMPLETING THE WORK.

H. WHERE PLANS AND SPECIFICATIONS CONFLICT, SPECIFICATIONS SHALL SUPERSEDE PLANS. WHERE PLANS AND DETAILS CONFLICT, THE MORE DETAILED (LARGER SCALED) ITEM WILL TAKE PRECEDENCE. IF IT IS UNCLEAR AS TO THE INTENT OF THE WORK DUE TO THE CONFLICT, NOTIFY THE ARCHITECT IMMEDIATELY BEFORE PROCEEDING.

I. CONTRACTORS ARE NOT TO SCALE THE PLANS FOR MISSING OR UNCLEAR INFORMATION. WHERE PLANS ARE UNCLEAR, VERIFY WITH ARCHITECT BEFORE PROCEEDING .

J. CONTRACTOR'S BIDS ARE TO BE COMPLETE AND TO INCLUDE ALL MATERIAL, LABOR, , AND FACILITIES REQUIRED TO COMPLETE THE WORK SHOWN ON DRAWINGS AND SPECIFIED HEREIN.

K. ALL SUBCONTRACTOR QUESTIONS CONCERNING BIDDING, THE DRAWINGS, OR SITE VISITS SHALL BE DIRECTED TO THE GENERAL CONTRACTOR.

L. ALL SUBCONTRACTORS SHALL OBTAIN ANY SPECIFIC PERMITS AND CODE REVIEW FOR THEIR TRADE. GENERAL CONTRACTOR WILL OBTAIN OVERALL CONSTRUCTION PERMIT.

M. THE OWNERS MAY HAVE OTHER CONTRACTORS, WORKERS AND SUPPLIERS ENGAGED ON THIS PROJECT. VERIFY EXACT LIMITS OF RESPONSIBILITY DURING BIDDING AND COORDINATE WITH ALL WORK BEING CONDUCTED UNDER OTHER CONTRACTS.

N. PAYMENT OF MONTHLY DRAWS FOR WORK COMPLETED TO DATE IS BASED UPON RECEIPT OF LIEN RELEASES AND SITE INSPECTIONS. ITEMS LISTED AS COMPLETE ON THE DRAW BUT NOT COMPLETED TO THE OWNER'S AND ARCHITECT'S SATISFACTION, MUST BE COMPLETED OR REMOVED FROM THE DRAW BEFORE PAYMENT WILL BE MADE. ALL OUTSTANDING INVOICES FOR THIS PROJECT FROM ALL SUBCONTRACTORS AND SUPPLIERS WILL BE PAID AND A LIEN RELEASE ISSUED FROM THE GENERAL CONTRACTOR IN CHARGE BEFORE PAYMENT WILL BE MADE.

O. FINAL PAYMENT OF ALL PORTIONS OF THIS PROJECT IS BASED UPON RECEIPT OF LIEN RELEASES, WARRANTIES AND MAINTENANCE/OPERATIONS MANUALS FOR ALL ITEMS.

P. FOR ALL SECTIONS IN THESE DOCUMENTS WHERE MULTIPLE COLORS, FINISHES, AND/OR MATERIAL CHOICES OCCUR AND WHERE THE OWNER CAN ONLY MAKE THESE CHOICES AFTER THE CONTRACT HAS BEEN AWARDED , THIS CONTRACT IS TO INCLUDE THE MOST RESTRICTIVE AND/OR EXPENSIVE OF THE CHOICES GIVEN SO THE OWNER CAN MAKE A CHOICE AT A LATER TIME WITHOUT CHANGE ORDERS. SHOULD THE OWNER MAKE A CHOICE THAT IS LESS EXPENSIVE THAN WHAT WERE BID, THEN THE OWNER IS TO BE CREDITED BACK THE DIFFERENCE BETWEEN WHAT WAS SPECIFIED AND WHAT WAS SELECTED .

Q. VALUE ENGINEERED ITEMS AND/OR APPROVED EQUALS ARE TO BE SUBMITTED AS PART OF THE BID PACKAGE FOR APPROVAL BY THE OWNER AND ARCHITECT. DUE TO LIMITED BIDDING TIME, OWNER AND ARCHITECT CANNOT/WILL NOT REVIEW PRODUCTS DURING BIDDING FOR EQUALITY OR EQUIVALENCY TO THESE DOCUMENTS. OWNER AND ARCHITECT WILL APPROVE THESE ITEMS AS PART OF THE BID REVIEW AND MAY ASK FOR PROOF OF PRODUCT EQUALITY, PRODUCT SPECIFICATION AND CLARIFICATION, RESUBMITTAL OF ORIGINAL ITEMS, OR OTHER REQUIREMENTS AS A CONDITION OF ACCEPTANCE OF ANY AND ALL BIDS. ITEMS NOT LISTED ON BID FORMS AND SUBMITTED AS PART OF BID PACKAGE ARE ASSUMED TO BE AS SPECIFIED IN THESE DOCUMENTS AND ANY ITEM NOT MEETING THESE DOCUMENTS CAN BE ASKED TO BE REPLACED OR A CHANGE ORDER APPLIED TO THE PROJECT IN THE AMOUNT OF THE DIFFERENCE OF THE ORIGINAL ITEM SPECIFIED AT THE OWNER'S AND ARCHITECT'S DISCRETION.

01500 DEMOLITIONS

A. GENERAL CONTRACTOR SHALL BE RESPONSIBLE FOR ALL DEMOLITION WORK UNLESS OTHERWISE NOTED. SUB-CONTRACTORS SHALL BE RESPONSIBLE FOR ALL DEMOLITION THAT PERTAINS TO THEIR TRADE AND NOT COVERED BY THE GENERAL CONTRACTOR. ALL DEMOLITION SHALL CONFORM TO O.S.H.A., STATE AND LOCAL PERMIT AND SAFETY CODES.

B. VERIFY STRUCTURAL INTEGRITY BEFORE & DURING CONSTRUCTION. PROVIDE TEMPORARY SUPPORT AS REQUIRED.

C. CONTRACTORS SHALL PROVIDE FOR DUST/DEBRIS CONTROL, CLEANUP AND PROTECTION OF OTHER PERSONNEL AND VISITORS AS NEEDED. DUST CONTROL TO INCLUDE BUT IS NOT LIMITED TO CREATING A TEMPORARY STRUCTURE BETWEEN ANY SPACES TO REMAIN OCCUPIED AND WORK SPACE, COVERING DOORS/VENTS/WINDOWS AS NEEDED TO PREVENT THE PASSAGE OF DUST, AND CLEANING UP ANY ACCUMULATION OF DUST.

D. THE SITE IS TO BE LEFT "BROOM" CLEAN AND SECURE FROM INTRUDERS AT THE END OF EACH DAY.

E. CONTRACTOR TO PROPERLY REMOVE AND PROPERLY DISPOSE OF ALL DEBRIS AND DEMOLISHED ITEMS EXCEPT ITEMS SPECIFICALLY LISTED TO BE DELIVERED TO OWNER.

F. ALL ITEMS OR UTILITIES "CAPPED" AFTER DEMOLITION SHALL BE IN A NEAT MANNER, PAINT TO MATCH ADJOINING OR CONCEAL BEHIND FINISHED AREA. ALL "CAPPED" ITEMS TO MEET APPLICABLE CODES AND INDUSTRY STANDARD PRACTICES .

G. REMOVE AND PROPERLY DISPOSE OF ALL UNUSED (OR NO LONGER USED) BRACKETS, SUPPORTS, MISC. ITEMS, AND EQUIPMENT FROM THE PROJECT AREAS. THIS INCLUDES ALL ELECTRICAL, HVAC AND PLUMBING ITEMS. AS DIRECTED HEREIN, TURN OVER SPECIFIC ITEMS TO OWNER AND DISPOSE OF ALL OTHERS.

02000 SITE-WORK/FOUNDATIONS

A. PERFORM ALL EXCAVATIONS, BACKFILLING AND GRADING, AS WELL AS PAVING, REQUIRED TO COMPLETE WORK SHOWN. CONTRACTORS SHALL TAKE THIS DATA AND SUBMIT IN THEIR BID ANY CHANGES NECESSARY FOR COMPLETION OF THE PROJECT. PROVIDE POSITIVE DRAINAGE THROUGHOUT THE SITE FROM THE PARKING AREAS AND AWAY FROM THE BUILDING.

B. PROTECT AGAINST DAMAGE TO ANY LAWNS, SHRUBS, TREES, ROADS, WALKS, SIGNS, UNDERGROUND TANKS , ETC., AND OTHER WORK THAT IS TO REMAIN IN PLACE.

C. MATERIALS TO BE EXCAVATED ARE ASSUMED TO BE EARTH OR OTHER MATERIALS THAT CAN BE REMOVED BY POWER SHOVEL OR OTHER NORMAL EXCAVATING EQUIPMENT, BUT NOT REQUIRING THE USE OF EXPLOSIVES OR DRILLS. IF OTHER CONDITIONS ARE ENCOUNTERED WITHIN THE LIMITS OF THE EXCAVATION, NOTIFY ARCHITECT IMMEDIATELY.

D. ALL BUILDING AND COLUMN FOOTINGS SHALL BEAR DIRECTLY ON UNDISTURBED SOIL, UNLESS SPECIFICALLY DESIGNED OTHERWISE HEREIN TO BEAR ON OTHER SUBSURFACE.

E. ASSUMED BEARING CAPACITY AS INDICATED BY OWNER IS 1, 500 LBS. S.F., UNLESS OTHERWISE NOTE ON THE PLANS OR BY GEOTECHNICAL REPORTING. IF THIS BEARING CAPACITY IS NOT ENCOUNTERED AT THE DEPTH SHOWN ON DRAWINGS, THE SITE CONTRACTOR SHALL NOTIFY THE GENERAL CONTRACTOR. THE GENERAL CONTRACTOR, ARCHITECT, ENGINEER, AND OTHER PARTIES WILL THEN ESTABLISH AN ADDITIONAL VOLUME OF EXCAVATION.

F. BUILDING SLAB AREAS, DRIVES, WALKS AND PARKING AREAS THAT REQUIRE UNDERCUTTING OR FILL ARE TO BE BACKFILLED WITH LEAN CLAY OR GRANULAR FILL, UNIFORMLY COMPACTED TO AT LEAST 95% STANDARD PROCTOR (ASTM D698). PERIODIC FIELD DENSITY TESTING TO BE PERFORMED DURING CONSTRUCTION IF REQUIRED AND PAID FOR BY THE OWNER.

G. GENERAL CONTRACTOR TO INCLUDE ADDITIONAL COST BREAKOUT IN THEIR INITIAL BID FOR EITHER THE TRENCH EXCAVATION OR MASS EXCAVATION OF ROCK IF IT IS DETERMINED TO BE NECESSARY. BIDS ARE TO INCLUDE ALL MARKUP, OVERHEAD, DISPOSAL, , AND GRADING AT LOWER AREAS OF THIS SITE.

H. FURNISH AND INSTALL ALL SITE ITEMS AS SHOWN ON THE DRAWINGS OR LIST HEREIN .

I. FURNISH AND INSTALL SOD WITHIN 3' OF ALL CONCRETE WALKS AND BUILDING AREAS. SEED AND STRAW ALL OTHER DISTURBED EARTH AREAS.

J. CONTRACTOR TO INCLUDE ALL EROSION CONTROL MEASURES NECESSARY. EROSION CONTROL MEASURES ARE TO FOLLOW THOSE POLICIES, STANDARDS AND PRACTICES AS SET FORTH BY THE CIVIL PLAN AND/OR ALL FEDERAL, STATE, AND LOCAL REQUIREMENTS. THE CONTRACTOR WILL BE RESPONSIBLE FOR MAINTAINING ALL EROSION CONTROL MEASURES AND MAINTAINING ALL DOCUMENTATION AS REQUIRED. ANY PENALTIES OCCURRED AS A RESULT OF FAILURE TO MAINTAIN THESE CONTROLS SHALL BE THE RESPONSIBILITY OF THE CONTRACTOR AND THE OWNER SHALL BARE NO RESPONSIBILITY FOR THESE PENALTIES UNLESS THERE IS DOCUMENTED PROOF THAT THESE PENALTIES WERE AS A RESULT OF NEGLIGENCE FROM THE OWNER OR HIS REPRESENTATIVES.

K. ALL EXISTING EXCAVATED MATERIAL THAT CANNOT BE USED AS FILL WILL BE WASTED ON SITE IN AREAS AS DIRECTED BY OWNER. THE MATERIAL WILL BE SPREAD, COMPACTED, SMOOTHED AND DISCED. THE EXCAVATED MATERIAL WILL THEN BE SEED AND STRAW AS INDICATED ABOVE.

L. FOUNDATION EXCAVATION

1. FOLLOW OSHA AND LOCAL REQUIREMENTS FOR DETERMINING THE ANGLE OF REPOSE. NO ANGLE OF REPOSE CAN BE ASSUMED WHEN SOIL IS UNDER ADVERSE MOISTURE CONDITIONS. USE FORMS WHERE CONCRETE SURFACES ARE SHOWN VERTICAL OR STEEPER THAN THE ANGLE OF REPOSE.

2. CUT EARTH NEATLY FOR GRADE BEAMS AND FOOTINGS, EXCAVATE BY HAND IF NECESSARY, TO REMOVE ALL LOOSE MATERIAL AND DISTURBED EARTH.

3. REPLACE DISTURBED EARTH AND OVER-EXCAVATED LOCATIONS WITH FILL CONCRETE.

4. KEEP EXCAVATIONS CONSTANTLY SHORED AND DEWATERED.

5. POUR FOOTINGS ONLY AFTER EXCAVATIONS HAVE BEEN INDIVIDUALLY INSPECTED AND APPROVED.

6. AFTER INSPECTION AND APPROVAL, PLACE CONCRETE PROMPTLY BEFORE ANY CHANGE IN EXCAVATION CONDITIONS OCCUR.

M. TRENCHING AND BACKFILLING FOR DRAIN PIPES

1. COMMENCE FROM LOW POINT SO EXCAVATION AND PIPE CAN BE KEPT DRAINED AT ALL TIMES.

2. WIDTH TO BE SUFFICIENT TO MAKE JOINTS AND COMPACT BACKFILL UNDER PIPE.

3. FINAL EXCAVATION TO BE DONE BY HAND SO PIPE RESTS CONTINUOUSLY ON SOLID EARTH EXCEPT WHERE BACKFILLED WITH CEMENT STABILIZED SAND.

4. AFTER PLACING PIPE, IMMEDIATELY PLACE SOME BACKFILL TO HOLD THE PIPE; COMPACT SUFFICIENT BACKFILL UNDER THE PIPE TO HOLD IT SECURELY AGAINST ANY POSSIBLE MOVEMENT; DO NOT COVER UNTIL INSPECTED.

02741 ASPHALT PAVING

A. IF PAVING DETAILS ARE NOT SPECIFIED ON THE SITE PLAN, THEN NEW PAVED AREAS SHALL HAVE A MINIMUM 6" THICK DGA WITH A MINIMUM 2" LAYER OF ASPHALT BINDER COURSE AND 1" LAYER OF ASPHALT SURFACE COURSE ROLLED SEPARATELY. ALL NEW PAVING HEIGHTS TO BE ADJUSTED AS REQUIRED IN ORDER TO MATCH THE EXISTING PAVING HEIGHT.

B. EXISTING PAVED AREAS TO BE REPAVED, SHALL HAVE ALL DAMAGED AREAS REMOVED AND THEN BE RECONSTRUCTED TO MATCH THE ABOVE. INSTALL MINIMUM 1" THICK TOPPING OVER EXISTING PAVED AREAS TO REMAIN.

C. ALL PAVING SHALL CONFORM TO STATE HIGHWAY SPECIFICATIONS FOR MATERIAL AND INSTALLATION.

D. IF PAVING IS ANTICIPATED IN WINTER, THE SURFACE COAT MAY HAVE TO WAIT UNTIL SPRING. COST OF PAVING TO BE COMPLETED MAY BE HELD BY THE OWNER (IF NECESSARY) UNTIL FINAL COMPLETION.

03000 CONCRETE

A. CONCRETE TO BE DIMENSIONS SHOWN ON DRAWINGS AND REINFORCED AS DETAILED.

B. CONCRETE SHALL DEVELOP A MINIMUM COMPRESSIVE STRENGTH OF 4000 PSI AT 28 DAYS.

C. CONTRACTOR TO MAKE (3) CONCRETE CYLINDER SAMPLES FOR EVERY 150 CUBIC YARDS (OR FRACTION THEREOF) OF CONCRETE PLACED PER DAY. CONCRETE CYLINDERS ARE TO FOLLOW THE PRACTICES SET FORTH IN ASTM C31 FOR STANDARD PRACTICE FOR MAKING AND CURING CONCRETE TEST SPECIMENS IN THE FIELD AND ASTM C172 FOR STANDARD PRACTICES FOR SAMPLING FRESHLY MIXED CONCRETE. SAMPLES ARE TO BE TAKEN FROM THE MIDDLE OF A TRUCK LOAD AND NOT THE BEGINNING OR ENDING PORTIONS. ALL CYLINDERS ARE TO BE LABELED, DATED AND STORED ON SITE IN THE SAME ENVIRONMENT AS THE CONCRETE PLACED. OWNER, ARCHITECT OR CONSTRUCTION MANAGER MAY CALL FOR TESTING OF THESE SAMPLES AT ANY TIME. OWNER WILL PAY FOR TESTING AS NEEDED.

D. INTERIOR FLOOR SLABS ARE TO RECEIVE SMOOTH TROWEL FINISH.

E. EXTERIOR CONCRETE DRIVES, WALKS AND STOOPS ARE TO BE LIGHT BROOM FINISHED IN THE DIRECTION OF WATER FLOW, UNLESS NOTED OTHERWISE.

F. CONCRETE CURING AND SEALING COMPOUNDS ARE TO BE SURFACE APPLIED SOLVENT WHICH CURES, SEALS, HARDENS, AND DUSTPROOFS.

1. UNFINISHED EXPOSED INTERIOR CONCRETE FLOORS ARE TO RECEIVE "INTRASEAL" BY COMSPEC OR APPROVED EQUAL. VERIFY EXISTING CONDITIONS BEFORE STARTING WORK. APPLY PRODUCT PER MANUFACTURER'S REQUIREMENTS AND RECOMMENDATIONS.

2. ALL OTHER CONCRETE SLABS TO RECEIVE "CURE 'N SEAL" BY SAKRETE, "SEAL CURE-25" BY W. R. MEADOWS OR APPROVED EQUAL. VERIFY EXISTING CONDITIONS BEFORE STARTING WORK. APPLY PRODUCT PER MANUFACTURER'S REQUIREMENTS AND RECOMMENDATIONS. BEFORE STARTING WORK, VERIFY THAT SELECTED CURE AND SEAL PRODUCT IS COMPATIBLE WITH THE ANTICIPATED FINISHED FLOOR AND SUB FINISHES.

G. ALL CONCRETE FLOORS ARE TO HAVE A VAPOR RETARDER INSTALLED BEFORE THE CONCRETE IS PLACED. VAPOR RETARDER IS TO BE AS SPECIFIED IN THE LATEST ASTM E 1745 AND HAVE THE FOLLOWING PROPERTIES: A MINIMUM OF 0.03 PERMEABILITY, 5LB PUNCTURE RESISTANCE, AND 45.0 LB./IN TENSILE STRENGTH. RETARDER TO BE INSTALLED PER MANUFACTURER'S RECOMMENDATIONS AND SPECIFICATIONS.

H. MATERIALS AND CONSTRUCTION METHODS SHALL CONFORM TO THE LATEST REQUIREMENTS OF ACI 318-83.

I. ALL EXPOSED 90-DEGREE EDGES OF VERTICAL AND HORIZONTAL CORNERS OF CONCRETE SHALL HAVE TOOLED EDGES, UNLESS INDICATED OTHERWISE.

J. REINFORCING STEEL SHALL BE A615-83 GRADE 60. CONTRACTOR MAY USE FIBERMESH EQUIVALENT REINFORCING IN 4" SLABS ON GRADE, BUT ELEVATED SLABS MUST HAVE WIRE REINFORCING AS SHOWN.

K. WELDING OF OR TO REINFORCING BARS WITHOUT PRIOR APPROVAL OF ENGINEER IS PROHIBITED EXCEPT WHERE SPECIFIED ON THE DRAWINGS.

L. ALL REINFORCING BARS ARE TO BE SUPPORTED IN THE FORM AND SPACED WITH WIRE BARS SUPPORTS MEETING THE REQUIREMENTS OF THE ACI "MANUAL OF STANDARD PRACTICE FOR DETAILING REINFORCED CONCRETE STRUCTURES" (ACI 315-LATEST EDITION).

M. ALL DETAILING, FABRICATION AND ERECTION OF REINFORCING BARS, UNLESS OTHERWISE NOTED, MUST FOLLOW THE ACI "MANUAL OF STANDARD PRACTICE FOR DETAILING REINFORCED CONCRETE STRUCTURES" (ACI 315-LATEST EDITION).

N. CONCRETE WALKS SHALL HAVE MOLDED EXPANSION JOINT MATERIAL AS SHOWN. FINAL JOINT LAYOUT TO BE APPROVED BY OWNER.

O. CONTROL JOINTS (C.J.) SHALL BE SAW-CUT A MINIMUM OF 1/4 OF SLAB THICKNESS AND WITH A MAXIMUM SPACING AS SHOWN ON THE DRAWINGS.

P. ISOLATION JOINTS (I.J.) IF REQUIRED SHALL RECEIVE 1/2" THICK EXPANSION JOINT FILLER EXTENDING FROM BOTTOM OF SLAB TO 1/2" BELOW TOP OF SLAB AND THE TOP 1/2" FILLED WITH POLYURETHANE JOINT SEALANT, UNLESS OTHERWISE NOTED.

Q. CONSTRUCTION JOINTS (CONST. J.), IF REQUIRED, SHALL BE FORMED USING "KEY-LOC JOINT SYSTEM" MANUFACTURED BY FORM-A-KEY.

R. ALL DIMENSIONS AND GRADES SHALL BE VERIFIED IN THE FIELD (V.I.F.) BY THE CONTRACTOR AND ANY DISCREPANCIES OR INTERFERENCES SHALL BE REPORTED TO THE ARCHITECT BEFORE PROCEEDING WITH AFFECTED WORK.

S. WHERE SHOWN, ALL JUNCTIONS OF WALLS, PIERS AND FLOORS TO HAVE 1/2" WIDE EXPANSION JOINTS, FILLED WITH ELASTIC EXPANSION JOINT MATERIAL.

T. EXPOSED PIERS AND FOUNDATION WALLS TO HAVE RUBBED FINISH. ANY HONEYCOMBING THAT OCCURS THAT IS LESS THAN 4" IN DIAMETER IS TO BE FILLED AND FINISHED WITH A NON-EXPANDING GROUT. CONTACT THE ARCHITECT IMMEDIATELY FOR ANY HONEYCOMBING THAT IS 4" OR GREATER IN DIAMETER, FOR REVIEW OF THE CONCRETE AND RESOLUTION OF THE ISSUE.

U. CONCRETE CONTRACTOR TO PLACE ALL EXTERIOR EQUIPMENT PADS UNLESS OTHERWISE DIRECTED DURING BIDDING. COORDINATE FINAL SIZE, DETAILS AND LOCATIONS WITH THE APPLICABLE SUB-TRADES.

04000 MASONRY

A. MORTAR TO BE TYPE "M OR S" COMPLYING WITH ASTM C-90-97. IF CONCRETE BLOCK OR VENEER CONTAINS AN INTEGRAL WATER REPELLENT, THEN THE MORTAR IS TO RECEIVE A WATER REPELLENT ADDITIVE AS APPROVED BY THE BLOCK / VENEER MANUFACTURER.

B. PROVIDE 3/8" THICK MORTAR JOINTS BETWEEN UNITS WITH FULL MORTAR COVERAGE ON THE VERTICAL AND HORIZONTAL FACE SHELLS ONLY, EXCEPT FOR THIS FIRST BED COURSE SHALL BE LAID IN A FULL MORTAR BED.

C. UNLESS OTHERWISE NOTED ON THESE PLANS, ALL CONCRETE MASONRY OPENING HEADS ARE TO RECEIVE A PRECAST CONCRETE MASONRY LINTEL WITH MINIMUM (4) #5 BARS AND #3 STIRRUPS @ 12" ON CENTER. LINTEL TO BE SIZED SO TO HAVE A MINIMUM 8" BEARING EACH END.

D. BRICK MATERIALS ALLOWANCE TO BE \$650.00 PER 1000, DELIVERED. COLOR AND STYLE TO BE SELECTED BY OWNER.

E. IN VENEER WALLS, FURNISH AND INSTALL GALVANIZED, CORRUGATED MASONRY ANCHORS AT 16" ON CENTER HORIZONTALLY, 24" ON CENTER VERTICALLY AND ON EACH SIDE OF MASONRY CONTROL JOINT AT 24" ON CENTER VERTICAL .

F. IN ALL VENEER WALLS, PROVIDE WEEP HOLES AT 24" ON CENTER AND CONTINUOUS 8" HIGH MEMBRANE FLASHING ALONG BOTTOM ROW, AT OR ABOVE GRADE.

G. MASONRY SUBCONTRACTOR TO BE RESPONSIBLE FOR WATER-TIGHTNESS OF HIS WORK.

H. WORKMANSHIP, INCLUDING JOINT REINFORCEMENT AND COLD WEATHER INSTALLATION SHALL COMPLY WITH NATIONAL MASONRY ASSOCIATIONS APPLICABLE RECOMMENDATIONS.

I. MASONRY CONTRACTOR TO BRUSH CLEAN FINAL SURFACES AND PREPARE EXTERIOR

FACES FOR PAINT OR SEALER AS CALLED OUT.

J. PROVIDE CONTROL JOINTS AS INDICATED ON ELEVATIONS, WITH BACKER ROD AND PAINTABLE ELASTOMERIC CAULK.

05000 METALS

A. PROVIDE STRUCTURAL AND MISCELLANEOUS METAL ITEMS AS SHOWN ON DRAWINGS, AND AS REQUIRED TO COMPLETE THE PROJECT.

B. FURNISH SHOP DRAWINGS TO SATISFY LOCAL CODE REQUIREMENTS, FABRICATE MATERIALS AND INSTALL ALL METAL WORK AS NEEDED. THIS SHALL INCLUDE STRUCTURAL STEEL AND MISCELLANEOUS STEEL ITEMS.

C. TAKE FIELD MEASUREMENTS PRIOR TO FABRICATION. SUBCONTRACTOR SHALL BE RESPONSIBLE FOR THE ACCURACY OF ALL SUCH MEASUREMENTS AND THE PRECISE FITTING AND ASSEMBLY OF THE FINISHED PRODUCTS.

D. USE MATERIALS OF SIZE AND THICKNESS INDICATED OR, IF NOT INDICATED, AS REQUIRED TO DEVELOP THE MAXIMUM LOADS IN THE MEMBER. WELD CORNERS AND SEAMS CONTINUOUSLY, COMPLYING WITH AWS RECOMMENDATIONS. PROVIDE FOR ANCHORAGE OF TYPE SHOWN, COORDINATED WITH SUPPORTING STRUCTURE. FABRICATE AND SPACE ANCHORING DEVICES TO PROVIDE ADEQUATE SUPPORT FOR INTENDED USE.

E. CLEAN AND SHOP PAINT MISCELLANEOUS METAL WORK, EXCEPT MEMBERS OR PORTIONS OF MEMBERS TO BE EMBEDDED IN CONCRETE OR MASONRY, SURFACES AND EDGES TO BE FIELD WELDED UNLESS OTHERWISE INDICATED.

F. FURNISH BENT OR OTHERWISE CUSTOM FABRICATED, PLATES, ANCHORS, HANGERS, DOWELS AND OTHER MISCELLANEOUS STEEL SHAPES AS REQUIRED.

G. PROVIDE LOOSE BEARING AND LEVELING PLATES FOR STEEL ITEMS BEARING ON MASONRY, CONCRETE CONSTRUCTION, OR OTHER PORTIONS OF THE STRUCTURE AS INDICATED.

H. PROVIDE MISCELLANEOUS STEEL ELEMENTS, FRAMING AND SUPPORTS THAT ARE NOT A PART OF STRUCTURAL STEEL FRAMEWORK, AS REQUIRED TO COMPLETE WORK.

I. PROVIDE ANCHORAGE DEVICES AND FASTENERS WHERE NECESSARY FOR SECURING MISCELLANEOUS METAL FABRICATIONS TO IN-PLACE CONSTRUCTION; INCLUDING, THREADED FASTENERS FOR CONCRETE AND MASONRY INSERTS, TOGGLE BOLTS, THROUGH-BOLTS, LAG BOLTS, WOOD SCREWS AND OTHER CONNECTORS AS REQUIRED.

J. PROVIDE A-325 BOLTS AS SHOWN ON THE PLANS OR AS REQUIRED TO DEVELOP THE MAXIMUM CAPACITY OF THE CONNECTION SHOWN.

K. PERFORM CUTTING, DRILLING AND FITTING REQUIRED FOR INSTALLATION OF MISCELLANEOUS METAL FABRICATIONS.

L. FIELD WELDING SHALL COMPLY WITH AWS CODE FOR PROCEDURES OF MANUAL SHIELDED METAL-ARC WELDING, APPEARANCE AND QUALITY OF WELDS MADE, AND METHODS USED IN CORRECTING WELDING WORK.

M. SET LOOSE LEVELING AND BEARING PLATES ON WEDGES, OR OTHER ADJUSTABLE DEVICES. AFTER THE BEARING MEMBERS HAVE BEEN POSITIONED AND PLUMBED, TIGHTEN ANCHOR BOLTS. DO NOT REMOVE WEDGES OR SHIMS, BUT IF PROTRUDING, CUT-OFF FLUSH WITH THE EDGE OF THE BEARING PLATE BEFORE PACKING WITH GROUT. USE METALLIC NON-SHRINK GROUT IN CONCEALED LOCATIONS WHERE NOT EXPOSED TO MOISTURE; USE NON-METALLIC NON-SHRINK GROUT IN EXPOSED LOCATIONS, UNLESS OTHERWISE INDICATED. PACK GROUT SOLIDLY BETWEEN BEARING SURFACES AND PLATES TO ENSURE THAT NO VOIDS REMAIN.

N. TOUCH-UP PAINTING IMMEDIATELY AFTER ERECTION, CLEAN FIELD WELDS, BOLTED CONNECTIONS, AND ABRADED AREAS OF SHOP PAINT, AND PAINT EXPOSED AREAS WITH SAME MATERIAL USED FOR SHOP PAINTING. APPLY BY BRUSH OR SPRAY TO PROVIDE A MINIMUM DRY FILM THICKNESS OF 2.0 MILS.

O. MISCELLANEOUS ITEMS:

1. STEEL PLATES, SHAPES AND BARS: ASTM A-36

2. COLD FORMED STEEL TUBING USE ASTM A-500

3. HOT-ROLLED STEEL TUBING USE ASTM A- 501

4. HOT-ROLLED STRUCTURAL STEEL SHEET USE ASTM A-570 . CLASS 1 OR GRADE REQUIRED FOR DESIGN LOADING.

5. COLD-ROLLED STRUCTURAL STEEL SHEET USE ASTM A-611 . CLASS 1 OR GRADE REQUIRED FOR DESIGN LOADING.

6. NON-SHRINK METALLIC GROUT TO BE PRE-MIXED, FACTORY-PACKAGED, NON- STAINING, NON-CORROSIVE, NON-GASEOUS GROUT COMPLYING WITH CE CRD-C588. PROVIDE GROUT SPECIFICALLY RECOMMENDED BY MANUFACTURER FOR INTERIOR AND EXTERIOR APPLICATIONS.

7. ZINC-COATED FASTENERS FOR EXTERIOR USE OR WHERE BUILT INTO EXTERIOR WALLS. SELECT FASTENERS FOR THE TYPE, GRADE AND CLASS REQUIRED.

06000 CARPENTRY

A. ALL WOOD IN CONTACT WITH CONCRETE OR MASONRY OR TO BE EXPOSED ON THE EXTERIOR TO BE PRESSURE TREATED AGAINST DECAY AND INSECTS.

B. CARPENTER SHALL FURNISH ALL NECESSARY BLOCKING AND GROUNDS FOR ALL TOPS, CABINERY ITEMS, HANDRAILS, CASEWORK AND OTHER MISCELLANEOUS ITEMS AS NEEDED.

C. PROVIDE SMALL AREAS OF WOOD FRAMING WHERE SHOWN FOR SHELVES OR EQUIPMENT BY OWNER.

D. CARPENTER TO FURNISH & INSTALL ALL MOLDINGS, TRIM WORK AND FINISH HARDWARE (AT WINDOWS, DOORS, HANDRAILS, AND PLATFORM AREAS). ALSO, SHELVING BRACKETS, RODS AND HANGERS AS SHOWN. EXPOSED WOOD TRIM AND MOLDINGS TO BE PAINT GRADE SPRUCE OR FIR, (FINGER JOINTS ALLOWED).

E. FURNISH AND INSTALL ALL ROUGH & FINISH CARPENTRY INCLUDING ROUGH HARDWARE, FORM WORK INDICATED AND REQUIRED TO COMPLETE THE PROJECT.

F. WOOD FRAMING IS TO FOLLOW GOOD PRACTICE AND CODE REQUIREMENTS FOR FIRE BLOCKING AND WOOD BLOCKING. VERIFY FIRE BLOCKING REQUIREMENTS WITH THE BUILDING INSPECTOR BEFORE COMPLETING THE FRAME WORK.

G. PROVIDE BRIDGING AT ALL EXTERIOR WALLS AND INTERIOR LOAD BEARING WALLS, AT MIDPOINT OF WALLS FOR WALLS UP TO 9'-4" HIGH, AT 1/3 POINTS FOR WALLS 9' - 12" HIGH, AND AT 1/4 POINTS FOR WALLS UP TO 13'-4" HIGH. THE BRIDGING SHALL BE 2 X 6 OR 2 X 4 AS APPROPRIATE, MATCHING THE STUDS USED IN THE REMAINDER OF THE WALL.

H. FRAMING CONTRACTOR IS RESPONSIBLE FOR BRACING REQUIRED TO RESIST SEISMIC, WIND, AND LIVE LOADS SPECIFIED AND REQUIRED BY I.B.C. PROVIDE LET-IN AND G.W.B. BRACING AS NOTED ON SHEET SET.

I. REMOVE ALL WOOD INCLUDING FORM LUMBER, SCRAP LUMBER, SHAVINGS, AND SAWDUST IN CONTACT WITH THE GROUND. LEAVE NO WOOD BURIED IN ANY FILL.

J. ALL LUMBER AND PLYWOOD SHALL BE GRADED AND MARKED IN ACCORDANCE WITH THE

RENOVATION

ROOSTER RUN
6515 NEW SHEPHERDSVILLE RD
COX CREEK, KY 40013

PROJECT: ROOSTER RUN - FILE: SP1.08 Specifications.dwg - DATE: May 25, 2023 2:12 PM - BY: DEBBY BRID

LATEST GRADING RULES OF THE MANUFACTURER'S ASSOCIATION HAVING JURISDICTION. PLYWOOD DECKING SHALL BE TONGUE AND GROOVE OR TO BE BLOCKED AT ALL JOINTS, AND TO BE GLUED TO ALL SUPPORTING MEMBERS.

K. ALL MATERIALS SHALL BE DELIVERED AND STORED TO INSURE PROPER PROTECTION FROM DAMAGE. ALL MATERIAL SHALL BE WELL SEASONED.

L. FRAMING LUMBER TO BE STRESS GRADED LUMBER (1250 F. MINIMUM) #2 YELLOW PINE OR APPROVED EQUAL OF OTHER SPECIES OF THE FOLLOWING MINIMUM UNIT STRENGTHS IN #S PER SQ. IN: FB = 1,200; H = 105; C (PERPENDICULAR) = 390; (COMPRESSION PARALLEL TO GRAIN) C= 900; AND E = 1,760,000.

M. STUDS & PLATES TO BE FURNISH AND INSTALL AS SPECIFIED, DETAILED AND REQUIRED. MATERIALS SHALL BE STRAIGHT AND WITHOUT DEFECTS THAT WILL IMPAIR THE STRENGTH OR ALIGNMENT. DOUBLE STUDS AT OPENINGS, TRIPLE AT CORNERS.

N. DOUBLE TOP PLATES TO HAVE (2) 16D THROUGH AT EACH STUD THROUGH PLATE. SECURE UPPER MEMBER OF TOP PLATE WITH (2) 10D AT EACH END AND 16D AT 16" O.C. STAGGERED. DOUBLE MEMBERS SECURED WITH 16D AT 12" O.C. STAGGERED.

O. EXTERIOR O.S.B. SHEATHING TO BE NAILED TO STUDS AT 12" O.C. STAGGERED.

P. INSTALL ALL JOISTS WITH CROWN UP. DOUBLE JOISTS AT OPENINGS, UNLESS NOTED TO BE GREATER. DOUBLE MEMBERS SECURED WITH 16 D AT 6" ON CENTER, STAGGERED. LAPS OVER SUPPORTS SECURED WITH A MINIMUM OF (4) 10D, (3) 20D THROUGH HEADER INTO JOISTS ENDS. BLOCK SOLIDLY AT PLYWOOD JOINTS.

Q. HEADER BEAMS FOR OPENINGS IN WOOD FRAMED WALLS ARE TO BE DOUBLE MEMBERS WITH 1/2" PLYWOOD BETWEEN AS FOLLOWS: (2) 2 X 4'S FOR OPENINGS 30" WIDE OR SMALLER, (2) 2 X 6'S FROM 30" UP TO 48" WIDE, (2) 2 X 8'S FROM 48" UP TO 72" WIDE, AND (2) 2 X 10'S FROM 72" UP TO 96" WIDE. FRAMING FOR OPENINGS WIDER THAN 96" MUST BE COORDINATED WITH THE ARCHITECTS.

R. ON EXTERIOR FRAMING USE GALVANIZED, ELECTROPLATED 16D NAILS. INTERIOR NAILS ARE TO BE COMMON COATED 16D NAILS UNLESS OTHERWISE NOTES.

06175 PRE-ENGINEERED WOOD TRUSSES AND PRE-ENGINEERED JOISTS

A. BEFORE BIDDING, SUPPLIER / DESIGNER OF THE TRUSSES AND JOISTS IS RESPONSIBLE FOR OBTAINING ALL BID DOCUMENTS INCLUDING BUT NOT LIMITED TO CONSTRUCTION DOCUMENTS AND SPECIFICATIONS. SUPPLIER / DESIGNER IS RESPONSIBLE FOR COORDINATING FINAL DESIGN OF THIS PRODUCT WITH ALL OTHER TRADES, INCLUDING BUT NOT LIMITED TO ALL ROOF TOP LOADS, SPACING FOR DUCTWORK AND OTHER MISCELLANEOUS DESIGN LOADS. SHOULD A CONFLICT ARISE AS A RESULT OF DESIGN DIFFERENCE WITH OTHER TRADES, THIS DESIGNER SHOULD USE INDUSTRY STANDARD PRACTICES TO BID AND CREATE A PRODUCT TO ACCOMPLISH THE DESIGN INTENT OF THE CONSTRUCTION DOCUMENTS AND AS PART OF THIS BID, THEN NOTIFY GENERAL CONTRACTOR OF THE INTENDED CHANGES.

B. TRUSSES OR PRE-ENGINEERED JOISTS ARE TO BE OF PROFILE SHOWN ON BUILDING SECTIONS AND DETAILS.

C. NUMBER OF PANELS POINTS, MEMBER SIZING, GRADE, AND SPECIES AS DESIGNED BY THE TRUSS MANUFACTURER.

D. THE DESIGN IS TO BE THE RESPONSIBILITY OF THE MANUFACTURER, WHO IS RESPONSIBLE FOR MEETING ALL REQUIREMENTS OF I.B.C. THIS INCLUDES THE TRUSS GIRDERS REQUIRED AT SPANS AS SHOWN ON SHEET SET.

E. THE SCISSORS TRUSSES SHALL BE DESIGNED WITH A PINNED CONNECTION AT ONE END OF THE TRUSSES AND A ROLLER CONNECTION AT THE OTHER END SUPPORT CONDITION.

F. PROPER INSTALLATION AND ANCHORING OF ALL MEMBERS AND ANCHORING OF THE TRUSSES FOR ADEQUATE STRENGTH ARE THE RESPONSIBILITY OF THE FRAMING CONTRACTOR. ANCHORING TO BE AN APPROPRIATE STRAP OR TIE AS RECOMMENDED BY MANUFACTURER, AND FEDERAL, STATE AND LOCAL CODE REQUIREMENTS. SYSTEM TO BE BY SIMPSON STRONG-TIE OR EQUAL.

G. DESIGN OF ALL TRUSSES AND JOISTS ARE TO BE BASED ON MAXIMUM DEFLECTION OF L/360.

H. BEARING WEB MEMBERS OF FLOOR TRUSSES ARE TO BE DESIGNED TO CARRY THE AXIAL LOAD OF THE STUD WALL ABOVE.

I. THE MANUFACTURER IS TO PROVIDE SHOP DRAWINGS AND STRUCTURAL CALCULATIONS STAMPED BY A STATE REGISTERED STRUCTURAL ENGINEER OF THE STATE WORK TO BE PERFORMED IN, BEFORE FABRICATING THE TRUSSES.

J. DESIGN OF TRUSSES AND HANDLING AND ERECTION OF TRUSSES, INCLUDING TEMPORARY AND PERMANENT BRACING, IS TO FOLLOW THE LATEST EDITION OF THE SPECIFICATIONS OF THE TRUSS PLATE INSTITUTE. REFER TO SECTION 1000 ITEM B OF THESE SPECIFICATIONS WITH REGARDS TO INCONSISTENCIES.

K. DESIGN IS TO INCLUDE SIZING AND SPACING OF BRACING MEMBERS.

L. TRUSSES ARE TO BE DESIGNED TO THE FOLLOWING MINIMUM LOADS:

(NOTE: GREATER SNOW LOADS REQUIRED AT VALLEYS, ROOF LEVEL CHANGES, ETC. PER I.B.C. CODE REQUIREMENTS SUPERSEDES THESE LOADS.)

ROOF TRUSSES

WIND LOAD	15 PSF
SNOW LOAD	20 PSF PLUS SNOW LOAD BUILD-UP AT VALLEYS AND ROOF LEVEL CHANGES PER I.B.C. PLUS ROOF TOP EQUIPMENT AS DIRECTED BY THE CONTRACTOR.
TOP CHORD D.L.	10 PSF
BOTTOM CHORD D.L.	5 PSF
UPLIFT	12 PSF (9 IN EXCESS OF D.L.)

06410 WOOD CASEWORK

A. FURNISH AND INSTALL A COMPLETE SYSTEM FOR CABINETS AND CASEWORK FOLLOWING THE STANDARDS SET FORTH BY AWI AND MILLWORK BEST PRACTICES.

B. CABINETS TO BE OAK FINISH MDF BOARD WITH OVERLAY DOORS, WIRE PULLS AND FULLY ADJUSTABLE PLYWOOD SHELVES, BY "MERRILLAT" OR APPROVED EQUAL.

C. TOPS TO BE SQUARE EDGE, PLASTIC LAMINATE COVERED WITH 4" SPLASH AT ALL WALLS, SCRIBE FIT. COLORS TO BE SELECTED BY OWNER FROM STANDARD LINES.

D. PROVIDE ELEVATIONS AND SHOP DRAWINGS FOR REVIEW BY OWNER.

07000 MOISTURE PROTECTION

A. INSULATION:

1. ROLL GLASS FIBER INSULATION TO BE THICKNESS AND TYPE SHOWN ON DRAWINGS FOR SPECIFIC USES, TO BE "FIBERGLASS" OR "CELOTEX".

2. RIGID BELOW GRADE INSULATION AT FOUNDATION AND BASEMENT WALLS TO BE EXTRUDED, EXPANDED POLYSTYRENE 2" THICK (R-VALUE: 5), UNLESS OTHERWISE NOTED

ON THE PLANS.

3. EXTERIOR CONCRETE MASONRY UNITS TO RECEIVE "CORE-FILL 500" FOAMED IN PLACE SYSTEM OR APPROVED EQUAL.

B. CAULKING:

1. USE SHERWIN WILLIAMS 950A SILICONIZED ACRYLIC LATEX CAULK, GE SILICONE II OR APPROVED EQUAL. COLOR TO MATCH SURROUNDING AREA BEING CAULKED. CAULK ALL EXTERIOR JOINTS AND BOTH SIDES OF ALL DOOR AND WINDOW FRAMES.

2. ALL EQUIPMENT, MECHANICAL, PLUMBING AND ELECTRICAL CONTRACTORS SHALL SUPPLY ALL FLASHINGS AND CURBS FOR ROOF OR WALL PENETRATIONS TO THE BUILDING ERECTOR. BUILDING ERECTOR SHALL INSTALL AND FLASH ALL BUILDING PENETRATIONS AS PART OF THEIR BID PROJECT.

3. ALL EXTERIOR BASEMENT WALLS TO RECEIVE EXTERIOR RUBBERIZED ASPHALTIC DAMP PROOFING SYSTEM. ACCEPTABLE SYSTEMS TO BE BY HYDROTECH, HYDRO-SHUR, GRACE, MAR-FLEX OR APPROVED EQUAL. ENTIRE SYSTEM TO BE INSTALLED PER MANUFACTURERS RECOMMENDATIONS.

4. WHERE CALLED OUT ON THE DRAWINGS, FIRE CAULK TO MEET ALL ASTM REQUIREMENTS FOR FIRE AND SMOKE BARRIER. PRODUCT TO BE 3M FIRE BARRIER SEALANT CP 25WB+ OR APPROVED EQUAL.

07222 POLYSOCYANURATE ROOF INSULATION

A. CONTRACTOR SHALL FIELD VERIFY ALL CONDITIONS AND SUBMIT SHOP DRAWINGS FOR ALL DETAILS AND MATERIALS BEFORE ORDERING ROOF INSULATION.

B. COMPLY WITH MANUFACTURER'S RECOMMENDATIONS FOR HANDLING, STORAGE AND PROTECTION DURING INSTALLATION.

C. INSTALL ROOF INSULATION ACCORDING TO THE MANUFACTURER'S DETAILS AND RECOMMENDATIONS FOR SYSTEM, INSTALLATION GUIDE, AND CONTRACT DRAWINGS DETAILS.

D. FOR TAPERED ROOF INSULATION INDICATING LOCATION OF ROOF DRAINS, CANTS AND TAPERED EDGE STRIPS. VERIFY ROOF DRAIN LOCATIONS WITH MECHANICAL TRADES.

E. DO NOT ALLOW INSULATION MATERIALS TO BECOME WET OR SOILED AND DO NOT INSTALL INSULATION ON ROOF DECK WHEN WATER OF ANY TYPE IS PRESENT. DO NOT INSTALL INSULATION OR ROOFING MATERIALS WHEN SUBSTRATE IS DAMP OR WET OR WHEN PROPER ADHESIVE TEMPERATURE CANNOT BE MAINTAINED.

F. EXAMINE ROOF DECK FOR SUITABILITY TO RECEIVE INSULATION. VERIFY THAT SUBSTRATE IS DRY, CLEAN, AND FREE OF FOREIGN MATERIAL THAT WILL DAMAGE INSULATION INSTALLATION AND THAT THE DECK IS STRUCTURALLY SOUND TO SUPPORT INSTALLERS, MATERIALS, AND EQUIPMENT WITHOUT DAMAGING OR DEFORMING WORK.

G. ATTACH PRODUCT USING MECHANICAL FASTENERS PER MANUFACTURER RECOMMENDED WHEN POSSIBLE. ADHESIVES ARE TO BE USED PER MANUFACTURER'S RECOMMENDATIONS ONLY WHEN MECHANICAL FASTENERS ARE NOT POSSIBLE.

H. RIGID ROOF SYSTEM TO BE FLINTBOARD ISO BY CERTAINTeed, INSULBASE POLYISO BY CARLISLE SYNTec SYSTEMS, H-SHIELD BY HUNTER, OR AN APPROVED EQUAL. THICKNESS OF ROOF PANELS TO BE AS SHOWN ON DRAWINGS.

I. TAPERED RIGID ROOF SYSTEMS TO BE FLINTBOARD ISO-T BY CERTAINTeed, INSULBASE TAPERED POLYISO BY CARLISLE SYNTec SYSTEMS, TAPERED H-SHIELD BY HUNTER, OR AN APPROVED EQUAL. THICKNESS AND SLOPE OF ROOF PANELS TO BE AS SHOWN ON DRAWINGS.

07240 - EXTERIOR INSULATION & FINISH SYSTEM (E.I.F.S. - CLASS PB)

A. EXTERIOR INSULATION AND FINISH SYSTEM (E.I.F.S.) TO BE A DRAINAGE EIFS SYSTEM, CONSISTING OF A WATER RESISTANT BARRIER, DRAINAGE PLANE, EXPANDED POLYSTYRENE INSULATION (EPS) BOARD, ADHESIVE, CEMENTITIOUS BASE COAT WITH EMBEDDED REINFORCING FABRIC MESH, PRIMER (OPTIONAL), AND FINISH COAT, TO BE BY PAREX, STO, DRYVIT, OR APPROVED EQUAL.

B. WATER RESISTANT BARRIER TO BE A BUILDING VAPOR BARRIER AS SPECIFIED IN SECTION 07250 OR A LIQUID APPLIED SYSTEM AS SPECIFIED BY MANUFACTURER.

C. DRAINAGE PLANE TO BE EITHER A SURFACE APPLIED MATERIAL APPROVED BY MANUFACTURER OR A EPS BOARD WITH INTEGRAL DRAINAGE PLANE.

D. FLASHING SHALL BE CONTINUOUS AND WATERTIGHT. FLASHING SHALL BE DESIGNED AND INSTALLED TO PREVENT WATER INFILTRATION BEHIND E.I.F.S.

E. E.I.F.S. STANDARD SYSTEM SHALL BE CLASSIFIED IN ACCORDANCE WITH EIMA FOR E.I.F.S. CLASSIFICATION AND IMPACT RANGES OF 25-49 INCH-LBS.

F. CONTINUOUS EXPANSION JOINTS SHALL BE INSTALLED AT LOCATIONS AS SHOWN AND IN ACCORDANCE WITH MANUFACTURER'S RECOMMENDATIONS.

G. SUBSTRATE SYSTEMS SHALL BE ENGINEERED TO WITHSTAND APPLICABLE DESIGN LOADS.

H. MAXIMUM DEFLECTION UNDER POSITIVE OR NEGATIVE DESIGN LOADS OF SUBSTRATE SYSTEM SHALL NOT EXCEED 1/240 OF SPAN EXCEPT AS OTHERWISE APPROVED IN WRITING BY ARCHITECT BEFORE INSTALLATION.

I. SUBSTRATE DIMENSIONAL TOLERANCES TO BE FLAT WITH 1/4 INCH WITHIN ANY 4-FOOT RADIUS.

J. SUBSTRATE MOVEMENT AND ANY EXPANSION OR CONTRACTION OF E.I.F.S. AND ADJACENT MATERIALS SHALL BE TAKEN INTO ACCOUNT IN DESIGN OF EXPANSION JOINTS. PROPER CONSIDERATION SHOULD BE GIVEN TO SEALANT PROPERTIES, INSTALLATION CONDITIONS, TEMPERATURE RANGE, COEFFICIENTS OF MATERIAL EXPANSION, JOINT WIDTH TO DEPTH RATIOS, AND OTHER MATERIAL FACTORS. MINIMUM WIDTH OF EXPANSION JOINTS SHALL BE AS RECOMMENDED BY E.I.F.S. MANUFACTURER.

K. ENTIRE SYSTEM SHALL BE ACCEPTABLE FOR USE ON THIS PROJECT BY THE BUILDING CODE DEPARTMENT THAT HAS JURISDICTION.

L. COMPLY WITH MANUFACTURER'S INSTRUCTIONS AND RECOMMENDATIONS FOR INSTALLATION OF EXTERIOR INSULATION AND FINISH SYSTEM.

07250 WEATHER BARRIER - VAPOR BARRIER

A. BUILDING VAPOR BARRIER TO BE COMMERCIAL GRADE WEATHER BARRIER TYVEK

COMMERCIALWRAP BY DUPONT OR APPROVED EQUAL.

B. ALL JOINTS ARE TO BE LAPPED MINIMUM 3" AND TAPED AS SPECIFIED BY MANUFACTURER.

C. ALL PENETRATIONS ARE TO BE TAPED AROUND ENTIRE PERIMETER.

D. TAPE TO BE 3" WIDE TYVEK TAPE FOR COMMERCIAL APPLICATIONS BY DUPONT OR APPROVED EQUAL.

E. BARRIER TO BE ANCHORED IN WOOD WITH 1" PLASTIC CAPS FASTENERS WITH MIN 5/8" PENETRATION.

F. BARRIER TO BE ANCHORED IN METAL WITH 1-5/8" RUST RESISTANT SCREW WITH 2" PLASTIC CAP.

07530 ELASTOMERIC SHEET ROOFING (EPDM)

A. CONTRACTORS SHALL FIELD VERIFY ALL CONDITIONS AND SUBMIT SHOP DRAWINGS FOR ALL DETAILS AND MATERIAL BEFORE ORDERING THE ROOF COMPONENTS.

B. SYSTEM TO BE VERSICO TALC-FREE BLACK 50-MIL EPDM MEMBRANE SYSTEM INSTALLED OVER 1/2" RECOVERY BOARD AND METAL BATTEN STRIPS AS REQUIRED, OR APPROVED EQUAL.

C. SYSTEM AND APPLICATION SHALL EXCEED ALL STATE BUILDING CODES, LOCAL ORDINANCES AND THESE CONSTRUCTION DOCUMENTS.

D. PROVIDE WRITTEN 10-YEAR MANUFACTURER AND INSTALLER'S WARRANTIES/GUARANTEES FROM THE DATE OF THE OWNER'S WRITTEN FINAL ACCEPTANCE OF THE INSTALLATION.

E. INSTALL ADDITIONAL BLOCKING AND NAILERS AS REQUIRED, GRADE #2 OR BETTER LUMBER, PRESSURE-TREATED FOR FIRE AND ROT RESISTANCE WITH A SALT-BASED PRESERVATIVE (WOLMANIZED). CREOSOTE AND ASPHALTIC-BASED PRESERVATIVES ARE NOT ACCEPTABLE.

F. NON-SKID WHITE MOLDED RUBBER WALK PADS, 3/8" X 36" X 44" AND 3/8" X 36" X 22", FOR ROOF PROTECTION ARE TO BE PROVIDED FROM THE ROOF ACCESS TO ALL ROOF TOP UNITS.

G. INSTALL ROOF TOP CURBS SUPPLIED BY THE HVAC CONTRACTOR.

H. INSTALL FLASHING AS REQUIRED BY THE MANUFACTURER'S DETAILS AND CONTRACT DRAWING DETAILS.

08000 DOORS AND WINDOWS

A. DOORS, FRAMES, WINDOWS AND GLAZING TO BE AS SHOWN ON DRAWINGS. FINISH HARDWARE TO COMPLY WITH BUILDING CODE.

B. ALL DOOR AND WINDOW GLAZING TO CONFORM TO SECTION 08800 GLAZING.

C. EGRESS DOORS SHALL BE ABLE TO BE OPENED FROM INSIDE WITHOUT A KEY OR SPECIAL KNOWLEDGE.

D. ALL EXTERIOR OUTWARD SWINGING HINGED DOORS ARE TO HAVE NON-REMOVABLE PIN (NRP) HINGES, UNLESS OTHERWISE SPECIFIED ON THE DRAWINGS.

E. HOLLOW METAL FRAMES SHALL BE STANDARD PROFILE, 16GA. SHOP PRIMED. THREE (3) ANCHORS EACH SIDE, ONE (1) AT HEAD. USE WRAP AROUND FRAMES AT GYPSUM BOARD PARTITIONS.

F. HOLLOW METAL DOORS SHALL BE FLUSH, 18 GA., 1 3/4" THICK, EXTERIOR DOORS TO BE INSULATED WITH RIGID BD. INSULATION. HEAD OF DOORS TO BE SOLID AND FLUSH. DOORS TO BE SHOP PRIMED.

G. WOOD DOORS SHALL BE 1 3/4" SOLID CORE (PARTICLE BD. CORE) AS INDICATED WITH FLUSH STAIN GRADE VENEER. DOORS TO BE JOB STAINED AND SEALED, COLOR AS SELECTED.

H. FINISH HARDWARE SHALL BE MEDIUM GRADE COMMERCIAL PRODUCTS BY STANLEY, SCHLAGE, VON DUPRIN, YALE OR AN APPROVED EQUAL. FINISH TO BE SELECTED BY OWNER. U.L. RATED AND HANDICAPPED ACCESSIBLE HARDWARE AS REQUIRED. SEE DOOR SCHEDULE.

08410 ALUMINUM STOREFRONT SYSTEM

A. EXTERIOR FRAME ARE TO BE THERMALLY BROKEN ALUMINUM FRAMES.

B. FRAMES TO BE BLACK, BRONZE, WHITE OR CLEAR ANODIZED (AS SELECTED BY OWNER).

C. ALUMINUM STOREFRONT SYSTEM TO BE "KAWNEER 451T" OR APPROVED EQUAL.

D. GLAZING CONTRACTOR SHALL BE RESPONSIBLE TO SECURELY ANCHOR UNITS TO FRAMING OR MASONRY AS NEEDED TO TRANSFER LOADS TO THE BUILDING.

E. ALL GLAZING TO CONFORM TO SECTION 08800 GLAZING.

08800 GLAZING

A. UNLESS SPECIFIED HEREIN, ALL GLAZING IS PER DOOR AND WINDOW SCHEDULES LOCATED ON THE CONSTRUCTION DOCUMENTS.

B. ALL GLAZING TO COMPLY WITH SAFETY GLAZING LAWS. INSTALLER TO VERIFY REQUIREMENTS BEFORE ORDERING AND INSTALLING ALL GLAZING.

C. ALL INSULATED GLAZING UNITS, LOW-E FINISHING AND GLAZE TINTING ARE TO CARRY A MINIMUM OF A 10 YEAR WARRANTY FROM DATE OF ACCEPTANCE OF PROJECT.

D. WHERE GLAZING IS SPECIFIED TO BE LOW-E AND TINTED, GLAZING IS TO BE TEMPERED AS PER GLAZING TYPES BELOW.

E. ALL GLAZING TO FOLLOW STANDARD SPECIFICATIONS FOR ASTM C 1036, ASTM C 1048 AND ASTM E 774.

F. GLAZING TO BE BY PPG, LOF, GUARDIAN INDUSTRIES, FORD GLASS, HORDIS BROTHERS INC., OR EQUAL. PROVIDE ALL TINTED AND LOW-E GLASS FROM THE SAME MANUFACTURER FOR THE ENTIRE PROJECT.

G. GLAZING:

1. EXTERIOR GLAZING TO BE 1", DOUBLE LAYER INSULATED GLAZING.

2. INTERIOR GLAZING TO BE 1/4", SINGLE LAYER.

H. GLAZING TYPES:

1. ANNEALED: CLEAR FLOAT GLASS CONFORMING TO ASTM C 1036, TYPE I, CLASS 1, QUALITY Q3.

2. TEMPERED: AS SPECIFIED FOR CLEAR ANNEALED EXCEPT FULLY TEMPERED TO CONFORM TO ASTM C 1048, KIND FT.

I. GLAZING FINISH TYPES:

1. LOW-E: PPG "SUNGATE 500(2)" OR EQUAL, CLEAR FLOAT GLASS WITH TRANSPARENT REFLECTIVE COATING ON INBOARD (NO. 2) SURFACE, CONFORMING TO GLASS TYPE. .

J. CONFIGURATION TO BE PER WINDOW SCHEDULE LOCATED IN THE CONSTRUCTION DOCUMENTS.

K. GLAZING MATERIALS AND ACCESSORIES SHALL BE FULLY COMPATIBLE WITH THE MATERIALS AND FINISHES WITH WHICH THEY ARE IN CONTACT. NEOPRENE AND EPDM MATERIALS SHALL NOT COME IN CONTACT WITH SILICONE SEALANT MATERIALS. SILICONE RUBBER SPACERS, SETTING AND EDGE BLOCKS AND GASKETS SHALL BE EITHER TYPE I (DESIGNED TO PREVENT ADHESION) OR TYPE II (DESIGNED FOR ADHESION) AS PER GLAZING SYSTEM MANUFACTURER'S RECOMMENDATIONS FOR EACH CONDITION OF USE.

09000 FINISHES

A. ALL FINISHES SHALL BE AS CALLED FOR AND SPECIFIED ON DRAWINGS.

B. INSPECTION OF FINISHED SURFACES FOR BLEMISHES AND DEFECT AT THE END OF THE PROJECT SHALL FOLLOW THE GENERALLY ACCEPTED STANDARD - PDCA (P1-09) INDUSTRY STANDARDS FOR REVIEWING FINISHED SURFACES. "VIEWING AND INSPECTION OF FINISHED SURFACES SHALL BE AT A DISTANCE OF THIRTY-NINE (39) INCHES FROM THE SURFACE UNDER FINISHED LIGHTING OR NATURAL LIGHTING WITHOUT THE USE OF ANY OPTIC MAGNIFICATIONS OR ENHANCED LIGHTING. ANY BLEMISHES OR DEFECTS DETECTED AT THIS RANGE SHALL BE REMOVED OR REPAIRED AND PATCHED TO MATCH THE SURROUNDING."

C. FIBERGLASS REINFORCED PLASTIC (FRP) PANELS ARE TO BE BY MARLITE, DURALITE BY KEMLITE, OR APPROVED EQUAL. FURNISH AND INSTALL COMPLETE SYSTEM, INCLUDE PANELS, TRIM, AND ADHESIVE SYSTEM.

D. GYPSUM BOARD:

1. ALL GYPSUM BOARD TO BE 5/8" THICK AND INSTALLED PER U.S. GYPSUM ASSOCIATION STANDARDS AND BEST INDUSTRY PRACTICES.

2. USE MOLD / MOISTURE-RESISTANT GYPSUM BOARD ("GREEN" BOARD OR EQUAL) IN ALL TOILET ROOMS AND WITHIN 4'-0" OF ALL PLUMBING FIXTURES SUCH AS SINKS, DRINKING FOUNTAINS, WASHING MACHINES OR ANY OTHER EQUIPMENT NOT LISTED HERE IN.

3. WHERE INDICATED ON PLANS ALL FIRE RATED ASSEMBLIES ARE TO USE 5/8" TYPE 'X' GYPSUM BOARD, INSTALLED PER DETAILS AND BEST INDUSTRY PRACTICES.

4. FURNISH AND INSTALL METAL OR PLASTIC CORNER BEAD AT ALL OUTSIDE CORNERS AND "J" MOLD AT ALL EXPOSED EDGES.

5. CONTROL JOINTS: ALL WALLS ARE TO FOLLOW THE LATEST ASTM C840-08 AND GA-216 AS IT PERTAINS TO CONTROL JOINT PLACEMENT. UNLESS SHOWN ON THE PLANS DIFFERENTLY, ALL WALLS AND CEILINGS GREATER THAN (30) LINEAR FEET IN ANY DIRECTION ARE TO HAVE A CONTROL JOINT EVERY 30'-0" O.C. ALL CONTROL JOINTS ARE TO RECEIVE A METAL OR PLASTIC CONTROL JOINT STRIP, INSTALLED PER MANUFACTURER'S RECOMMENDATIONS.

E. CERAMIC WALL TILE TO BE 4"x4" CERAMIC MOSAIC TILES BY AMERICAN OLEAN OR APPROVED EQUAL. INSTALL THIN SET OVER CEMENT BOARD SUBSTRATE. USE C-CURE GROUT, 100% EPOXY ADDITIVE. TILE AND GROUT COLORS TO BE SELECTED BY OWNER FROM STANDARD ARCHITECTURAL LINE (MAXIMUM OF THREE TILE COLORS).

F. CERAMIC FLOOR TILE TO BE 12"x12"x5/16" THIN SET TILE BY STONEPEAK OR APPROVED EQUAL, WITH CAP TILE ALONG EDGES AND BASE. INSTALL WITH C-CURE GROUT, 100% EPOXY ADDITIVE. INSTALL PER MANUFACTURER'S RECOMMENDATIONS AND INSTALLATION INSTRUCTIONS. TILE AND GROUT COLORS TO BE SELECTED BY OWNER FROM STANDARD ARCHITECTURAL LINE (MAXIMUM THREE TILE COLORS).

G. VCT OR VET (VINYL ENHANCED TILE) FLOOR TILE TO BE 12"x12"x1/8" AZROCK BY TARKETT, OR APPROVED EQUAL. OWNER TO SELECT MAXIMUM OF THREE COLORS FROM FULL ARCHITECTURAL LINE.

H. VINYL PLANK FLOORING IS TO BE NOMINAL 0.125" THICK VINYL WITH A MINIMUM 0.02" WEAR LAYER. TILE TO BE 48" IN LENGTH, 6" TO 9" IN WIDTH, AND SHALL BE LAID IN A STRAIGHT PATTERN. OWNER TO SELECT FINAL PRODUCT FROM A STANDARD LIST OF MANUFACTURER'S PRODUCT IN A MINIMUM OF (2) COLORS. PRODUCT TO BE I.D. FREEDOM BY TARKETT, CLASSICS V5000 BY J+J FLOORING OR APPROVED EQUAL. PRODUCT TO BE GLUED DOWN USING A STANDARD ADHESIVE RECOMMENDED BY MANUFACTURER.

I. VINYL BASE TO BE 4" HIGH, 1/8" THICK BY TARKETT, ROPPE, OR APPROVED EQUAL. USE COVED AT VINYL FLOOR TILE AND COVELESS AT CARPET. STAIRS SHALL RECEIVE VINYL TREADS AND BACKS. TREADS SHALL HAVE REPLACEABLE SLIP RESISTANT STRIP AT NOSING. COLORS AS SELECTED BY OWNER FROM STANDARD ARCHITECTURAL LINE. INSTALLED PER MANUFACTURER'S INSTRUCTIONS.

J. FLOOR TRANSITIONS SHALL BE VINYL AS RECOMMENDED FOR THE SPECIFIC MATERIAL TRANSITIONS. MATERIAL SHALL BE BY TARKETT, ROPPE OR APPROVED EQUAL SELECTED FROM FULL ARCHITECTURAL COLOR LINES.

K. COATING SCHEDULE:

1. SURFACES NOT TO BE PAINTED ARE FLOOR COVERINGS, ITEMS WITH FACTORY APPLIED FINAL FINISH, CONCEALED DUCTS, PIPES AND CONDUIT, ACOUSTICAL CEILING TILES, ITEMS WITH PRE-FINISHED SURFACES, ALUMINUM WINDOWS AND DOOR FRAMES, AND ALL ITEMS CALLED NOT TO BE PAINTED ON PLANS.

2. SURFACES TO BE PAINTED:

NOTE: CONSULT WITH OWNER FOR FINAL COLORS AND FINISHES.

a) EXPOSED INTERIOR DRYWALL:

1ST COAT: LATEX WALL PRIMER.
2ND COAT: LATEX EGG SHELL OR ALKYD BASED ENAMEL AS CALLED FOR.
3RD COAT: LATEX EGG SHELL OR ALKYD BASED ENAMEL AS CALLED FOR.

b) INTERIOR DRYWALL CEILINGS:

1ST COAT: LATEX WALL PRIMER
2ND COAT: ALKYD FLAT CEILING PAINT

c) INTERIOR WOOD OR MASONITE (PAINTED):

1ST COAT: WALL AND WOOD PRIMER
2ND COAT: SEMI-GLOSS ALKYD ENAMEL
3RD COAT: SEMI-GLOSS ALKYD ENAMEL

d) INTERIOR METAL:

1ST COAT: METAL PRIMER
2ND COAT: SEMI-GLOSS ALKYD ENAMEL
3RD COAT: SEMI-GLOSS ALKYD ENAMEL

e) EXTERIOR METAL:

1ST COAT: METAL PRIMER

PROJECT NO:

23-4433

DRAWN BY:

DLB/

DATE:

PROJECT: ROOSTER RUN - FILE: SPT.08 Specifications.dwg - DATE: May 25, 2023 2:24PM - BY: DEBBY BIRD

RENOVATION

ROOSTER RUN
6515 NEW SHEPHERDSVILLE RD
COX CREEK, KY 40013

SPECIFICATIONS

SP1.02

2ND COAT: SEMI-GLOSS ALKYD ENAMEL
3RD COAT: SEMI-GLOSS ALKYD ENAMEL

f) ASPHALT STRIPING:

INSTALL 4" WIDE BRIGHT WHITE STRIPES AT ALL SHOWN PARKING SPACES.
INSTALL 4" WIDE SAFETY YELLOW STRIPES AT HANDICAPPED PARKING AND LOADING AREAS.
DIRECTIONAL ARROWS WHERE SHOWN, TO BE SAFETY YELLOW.
ALL STRIPING AND MARKING TO BE STRAIGHT, PERPENDICULAR AND UNIFORM.

09511 ACOUSTICAL CEILING TILES

- A. CEILING GRIDS TO BE STANDARD 2'X4' OR 2'X2' BY DONN, ARMSTRONG, OR APPROVED EQUAL.
- B. CEILING TILES TO BE 2'X2' OR 2'X4' VINYL FACED SQUARE EDGE, STANDARD FISSURED SQUARE EDGE, OR STANDARD FISSURED TEGULAR PANELS BY ARMSTRONG, U.S.G., OR APPROVED EQUAL.
- C. ACOUSTICAL SOUND PANELS TO BE 2'X2' COLORED ACOUSTONE PANELS BY U.S.G. OR APPROVED EQUAL.
- D. WET AREAS SUCH AS KITCHENS, RESTROOMS, AND WASH ROOMS ARE TO RECEIVE A SMOOTH TEXTURE 2'X4' WASHABLE, SCRATCH RESISTANT, AND ANTI-MICROBIAL ACOUSTICAL TILE. TILE TO BE KITCHEN ZONE - 672 BY ARMSTRONG OR APPROVED EQUAL.
- E. GRID AND PANELS ARE TO BE WHITE UNLESS OTHERWISE NOTED ON THE FINISH SCHEDULE.

10000 SPECIALTIES

- A. STORAGE SHELVING, WHERE SHOWN ON DRAWINGS SHALL BE PLASTIC COATED WIRE SYSTEMS BY CLOSETMAID, SCHULTE, K&V, OR APPROVED EQUAL. EACH LOCATION SHALL HAVE A FULLY ADJUSTABLE TRACK SYSTEM WITH A MINIMUM OF SIX SHELVES. FINAL STYLES OF THE SUPPLIED SHELVES TO BE SELECTED (SOME AREAS MAY RECEIVE ONLY A ROD AND SHELF).
- B. FIRE EXTINGUISHER AND CABINETS TO BE BY OWNER AS REQUIRED BY CODE AND BY THE FIRE INSPECTOR.
- C. TOILET ACCESSORIES: THE FOLLOWING LIST OF NEW ITEMS SHALL BE FURNISHED AND INSTALLED:
 - (1) FIXED STANDARD MIRROR(S) 60"X36" - BOBRICK B-165 B 6036
 - (1) FIXED STANDARD MIRROR(S) 48"X36" - BOBRICK B-165 B 4836
 - (1) FIXED STANDARD MIRROR(S) 36"X36" - BOBRICK B-165 B 3636
 - (1) FIXED STANDARD MIRROR(S) 30"X36" - BOBRICK B-165 B 3036
 - (1) FIXED STANDARD MIRROR(S) 24"X36" - BOBRICK B-165 B 2436
 - (1) 18" VERTICAL GRAB BAR(S) - BOBRICK B-6806X18
 - (1) 36" HORIZONTAL GRAB BAR(S) - BOBRICK B-6806X36
 - (1) 42" HORIZONTAL GRAB BAR(S) - BOBRICK B-6806X42
 - (1) TOILET PAPER HOLDER(S) - BOBRICK B-2888
 - (1) PAPER TOWEL DISPENSER(S) - BOBRICK B-262
 - (1) SURFACE MOUNTED HAND DRYER(S) - BOBRICK B-7007
 - (1) RECESSED HAND DRYER(S) - BOBRICK B-750
 - (1) WALL MOUNTED SOAP DISPENSER(S) - BOBRICK B-5050
 - (1) LAVATORY MOUNTED SOAP DISPENSER(S) - BOBRICK B-822
 - (1) FOLDING SHOWER SEAT(S) - BOBRICK B-5181
 - (1) SET(S) STAINLESS STEEL SHOWER CURTAIN HOOKS - BOBRICK B-204-1
 - (1) HEAVY DUTY SHOWER CURTAIN ROD(S) WITH CONCEALED MOUNTING - BOBRICK B-207
 - (1) SURFACE MOUNTED ROBE HOOK(S) - BOBRICK B-7671
 - (1) SURFACE MOUNTED SANITARY NAPKIN DISPOSAL(S) - BOBRICK B-254
 - (1) SURFACE MOUNTED COMBINATION FEMININE NAPKIN - TAMPON VENDOR(S) - BOBRICK B-2800
 - (1) SURFACE MOUNTED STAINLESS STEEL SHELVES(S) - BOBRICK B-683X
 - (1) RECESSED TOILED SET COVER DISPENSER(S) - BOBRICK B-3013
 - (1) BABY CHANGE STATION(S) KAOLA-KB100-00

10155 METAL TOILET PARTITIONS

- A. ALL BAKED ENAMEL METAL TOILET PARTITIONS SHALL BE FLOOR SUPPORTED AS MANUFACTURED BY GENERAL PARTITIONS MFG. CORP., OR APPROVED EQUAL. PROVIDE HANDICAPPED SYSTEMS AS REQUIRED.
- B. CONSTRUCTION SHALL BE 1" @ THICK WITH TWO SHEETS, OF GALVANIZED AND BONDERIZED STEEL FORMED AND, BONDED TOGETHER BEFORE ATTACHING DIE DRAWN MOLDING ON ALL FOUR SIDES OF PANELS. MITERED REINFORCEMENTS FUSED TO CORNERS FOR ADDED STRUCTURAL STRENGTH. FILLERS SHALL BE GENERALS RIBCORE SOUND-DEADENING INSULATION OR APPROVED EQUAL.
- C. DOORS TO BE SAME CONSTRUCTION AS PANELS.
- D. PILASTERS-SHALL BE 1-1/4" @ THICK WITH TWO SHEETS OF GALVANIZED AND BONDERIZED STEEL, BONDED BEFORE ATTACHING DIE DRAWN MOLDING TO BOTH SIDES AND TOP, MITERED REINFORCEMENTS FUSED ON BOTH CORNERS FOR ADDED STRUCTURAL STRENGTH. SAME CONSTRUCTION AS PANEL SPECIFICATION OUTLINES ABOVE. PILASTERS ARE TO BE ANCHORED TO FLOOR WITH STANDARD 3/8" THREADED ROD, HEX NUTS, AND WASHERS TO PROVIDE VERTICAL ADJUSTMENT AND NECESSARY STRENGTH.
- E. USE CONCEALED LATCH, COAT HOOKS, HINGE BRACKETS, DOORSTOP AND KEEPER, HEAVY CASTING NONFERROUS ALLOY, CHROME-PLATED. CONCEALED HINGE WORKS ON OPPOSING NYLON CAMS UNDER SPRING TENSION. TOP PIVOT PIN, MOUNTED WITHIN DOOR HAVING BEARING POINTS ABOVE AND BELOW HINGE BRACKET.
- F. WALL CONNECTION BRACKETS FOR PANELS AND PILASTERS TO BE HIGH STRENGTH HEAVY CHROME PLATED. PILASTER TRIM TO BE 3" HIGH, 0.031" STAINLESS STEEL. ALL HARDWARE AND FITTINGS TO BE SECURED WITH CHROME PLATED ONE-WAY VANDAL PROOF SEX BOLTS OR NO. 14 PLATED STEEL METAL SCREWS OF PROPER LENGTHS.

10650 PLASTIC LAMINATE TOILET PARTITIONS

- A. ALL PLASTIC LAMINATE PARTITIONS TO BE EQUAL TO BOBRICK FLOOR MOUNTED #1042 SERIES, OR APPROVED EQUAL. PROVIDE HANDICAPPED SYSTEMS AS REQUIRED.
- B. PARTITIONS TO BE AS SHOWN ON PLANS. COLORS TO BE SELECTED FROM WILSON ART OR APPROVED EQUAL STANDARD LINE BY OWNER.
- C. ALL HARDWARE AND FITTINGS TO BE STANDARD TYPE 304 STAINLESS STEEL HINGES, KEEPER, LIFT-FREE LATCH AND COAT HOOK (SHALL BE SUPPLIED WITH PARTITIONS).
- D. PERFORM FINAL ADJUSTMENTS TO LEVELING DEVICES AND HARDWARE. CLEAN EXPOSED SURFACES AND PARTITIONS, HARDWARE, FITTINGS, AND ACCESSORIES.

11000 EQUIPMENT

- A. GENERAL CONTRACTOR TO INSTALL ALL EQUIPMENT SO LISTED ON DRAWINGS, VERIFY AND COORDINATE REQUIREMENTS WITH SUPPLIERS DURING BIDDING.
- B. OWNER TO SUPPLY AND INSTALL ALL EQUIPMENT NOT REQUIRED OR LISTED HEREIN. SEE

EQUIPMENT SCHEDULES.

12000 FURNISHINGS

A. OWNER TO FURNISH AND INSTALL ALL FURNISHINGS NOT REQUIRED OR LISTED HEREIN.

SPECIAL NOTE:

- A. FINAL DETAILED LAYOUT OF STEEL STRUCTURES, PLUMBING, MECHANICAL, FIRE SUPPRESSION AND ELECTRICAL SYSTEMS ARE BY SEPARATE ENGINEERS OR INSTALLERS, IT IS THE RESPONSIBILITY OF THE OWNER AND GENERAL CONTRACTOR TO COORDINATE ALL WORK WITH AFFECTED OTHER TRADES TO ASSURE COMPLETENESS AND CODE COMPLIANCE.
- B. IT IS THE RESPONSIBILITY OF THE GENERAL CONTRACTOR AND THE MECHANICAL, ELECTRICAL, AND PLUMBING CONTRACTORS TO ENSURE THAT ALL PARTS OF THEIR WORK IS TO BE ACCESSIBLE AS PER FEDERAL ADAAG GUIDELINES AND ALL STATE / LOCAL GUIDELINES. THIS INCLUDES BUT IS NOT LIMITED TO ELECTRICAL CONTROLS SUCH AS THERMOSTATS OR LIGHTING CONTROLS, LIGHT SWITCHES, OUTLET PLUGS, HAND DRYERS, AND FAUCET CONTROLS. IF THERE ARE CONCERNS ABOUT HOW TO DETERMINE REACH RANGES, EQUIPMENT CLEARANCE OR OTHER ACCESSIBILITY ITEMS, CONTACT THE ARCHITECT IMMEDIATELY BEFORE WORK BEGINS FOR GUIDANCE.

END OF SPECIFICATIONS

ABBREVIATIONS

THESE ARE ABBREVIATIONS USED ON THE PLANS AND IN THESE SPECIFICATIONS. NOT ALL ITEMS MAY BE USE AND ARE FOR REFERENCE ONLY.

- ACT - ACOUSTICAL CEILING TILE
- AFF - ABOVE FINISHED FLOOR
- CJ - CONTROL JOINT
- E.I.F.S. - EXTERIOR INSULATION AND FINISH SYSTEM
- FRP - FIBERGLASS REINFORCED PANELS
- GYP. BD. - GYPSUM BOARD
- I.B.C. - INTERNATIONAL BUILDING CODE
- MAX - MAXIMUM
- MIN - MINIMUM
- NRP - NON-REMOVABLE PIN
- O.C. - ON CENTER
- VCT - VINYL COMPOSITE TILE
- VET - VINYL ENHANCED TILE
- V.I.F. - VERIFY IN FIELD

PROJECT NO:

23-4433

DRAWN BY:

DLB/

DATE:

PROJECT: ROOSTER RUN - FILE: SP1.03 Specifications.dwg - DATE: May 25, 2023 2:22PM - BY: DEBBY BIRD

RENOVATION

ROOSTER RUN

6515 NEW SHEPHERDSVILLE RD
COX CREEK, KY 40013

SPECIFICATIONS

SP1.03

PROBONO
KEYES ARCHITECTS & ASSOCIATES
4717 PRES ON HIGHWAY
LOUISVILLE, KENTUCKY 40213 (502) 636-5113

PROBONO CONSTRUCTION