

G. SCOTT & ASSOCIATES, ARCHITECTS

PLC

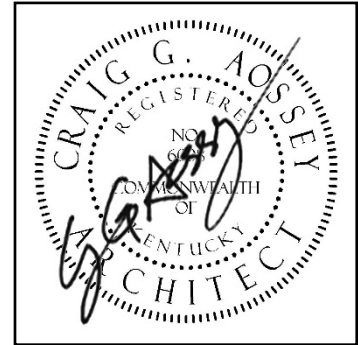
FRANKFORT IND – PHASE 4 AUDITORIUM RENOVATION

BG 24-050

ADDENDUM NUMBER ONE

29 Feb 24

The Contract Documents for the above project are amended as described in the following items. All Bidders must acknowledge this Addendum in the "Form of Bid" -- failure to acknowledge same will result in disqualification of Bidder. A total of 5 page(s), including 3 Drawing(s) and enclosures, are included this Addendum.



GENERAL

(Add. No. 1 – 29 Feb 24)

Item 1. Contractor's List

- Plan holders list can be viewed online at www.lynnimaging.com

(Add. No. 1 – 29 Feb 24)

Item 2. Pre-Bid Conference

- Contractors present at Pre-Bid:

Name	Company	Phone	Email
Jason Walton	Momentum Const.	859-382-4360	jasonwalton@momentumconstruction.com
John Bellisario	BCD Inc.	502-348-2305 / (c) 502-249-1523	jbellisario@bardstown.com

SPECIFICATIONS

(Add. No. 1 – 29 Feb 24)

Item 3. Specification 095123 – Acoustical Tile Ceiling

- Delete reference to Related Section 076200 Flashing & Sheet Metal – “metal soffits and ceiling panels”

DRAWINGS

(Add. No. 1 – 29 Feb 24)

Item 4. Dwg A-1.04 Auditorium Demolition Plan

- Delete removal of wing wall (note 9). This wall to remain.

(Add. No. 1 – 29 Feb 24)

Item 5. Dwg A-1.05 Auditorium Floor Plan – Ramp Framing

- Provide new wing wall extension per REVISED key note 15-“Install new wd 2X4 wd framing w/ 2 layers 5/8” gyp bd each face with 1”X6” wood cap, turn down on end to floor. Repair exist finishes & paint wall & top cap at existing wall to remain. Also, Note required new chase wall per note 19.
- Note limits of stage embedded light strip. Supplemental dwg 1.1
- Add floor revisions for ADA seating platform at top floor level. Supplemental dwg 1.1 & 1.3 (new Detail 1.3/A-3.03)
- Clarification detail at side of stage stair. Supplemental dwg 1.2 (new Detail 1.4/A-3.03)
- Clarification of existing to remain riser/tread quantity (8 treads @ 10”+ 1” nose/9 risers @ 7 1/2”) at rear exit stairs. Per revised Key note 4, “Replace existing carpet with new rubber tread/riser material.” Supplemental dwg 1.1
- Add key note 23 - “Replace existing handrails each side of exit stair. 1½” dia stainless steel tubing at 34” above nose, extend 12” on slope at bottom and 12” horiz at top, return ends to wall, support brackets at max 5’.” Supplemental dwg 1.1
- Revise key note 14 to delete “touch up finish”. (Vertical wood strips on back wall to receive new paint finish along with all other interior walls. Protect insulation behind strips.)
- Provide resilient base along slope of stair at stage and rear stair with new treads/risers, min 4” clear above nose.
- Add key note 24 – “Repair plaster at wing wall.” Supplemental dwg 1.1

(Add. No. 1 – 29 Feb 24)

Item 6. Dwg A-1.06 Auditorium Reflected Ceiling Plan

- Provide new acoustical ceiling tile material (nom 18” wide x full room width) along back wall between soffit and wall.

(Add. No. 1 – 29 Feb 24)

Item 7. Dwg E-1.01 Electrical Lighting Plan

- Sheet note 18 - Note that routing of imbedded stage-edge LED tape light is to be installed as per architectural supplemental drawing 1.1 that is included with this addendum. It clarifies the limits of both the recessed tape light that is on top of the stage at the edge and also additional tape light on the side of the stage at the stairs that are located on each side.

END OF ADDENDUM ONE

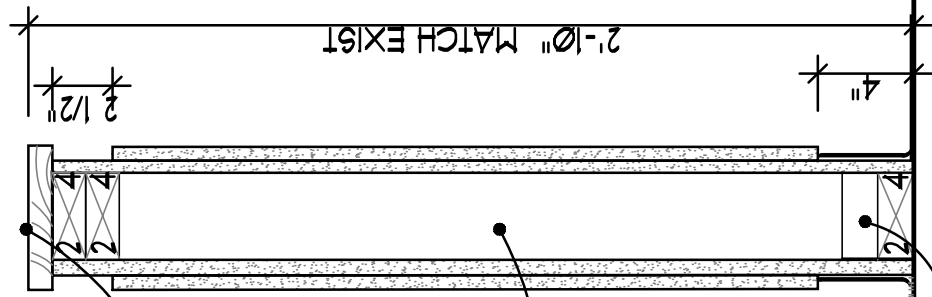
29 Feb 2024

6" x 1" BIRCH CAP
 PAINT FINISH TURN DOWN
 TO FLOOR AT END

2 LAYERS 5/8" GYP BD
 EA SIDE ON 2x4
 FRAMING

CARPET ON 1/4"
 UNDERLAY ON 3/4"
 PLYWD SUBFL

3"x3"x3"x1/8" ALUM ANGLE
 AT OPEN END BEHIND
 TRIM OR GYP BD
 ANCHOR W/ 1/2" SS
 SCREWS MIN 4 EA FACE.



DETAIL

1 1/2" = 1'-0"

11
 A-3-03

LET IN FOOTLIGHT STRIP
 AT WOOD NOSING

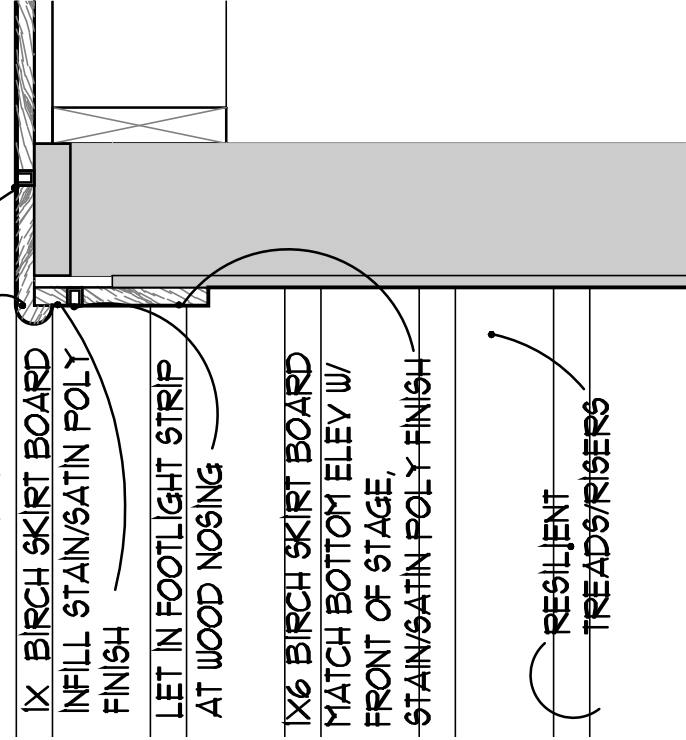
5" x 3/4" BIRCH EDGE
 BOARD AT FRONT OF
 STAGE - 2" RADIUS,
 STAIN/SATIN POLY FINISH

1X BIRCH SKIRT BOARD
 INFILL STAIN/SATIN POLY
 FINISH

LET IN FOOTLIGHT STRIP
 AT WOOD NOSING

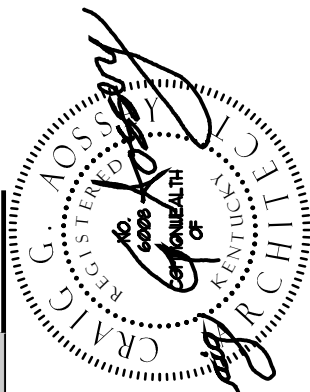
1X6 BIRCH SKIRT BOARD
 MATCH BOTTOM ELEY W/
 FRONT OF STAGE,
 STAIN/SATIN POLY FINISH

RESILIENT
 TREADS/RISERS



DETAIL

14
 A-3-03



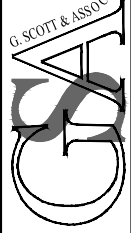
DRAWING
 A-3.03a

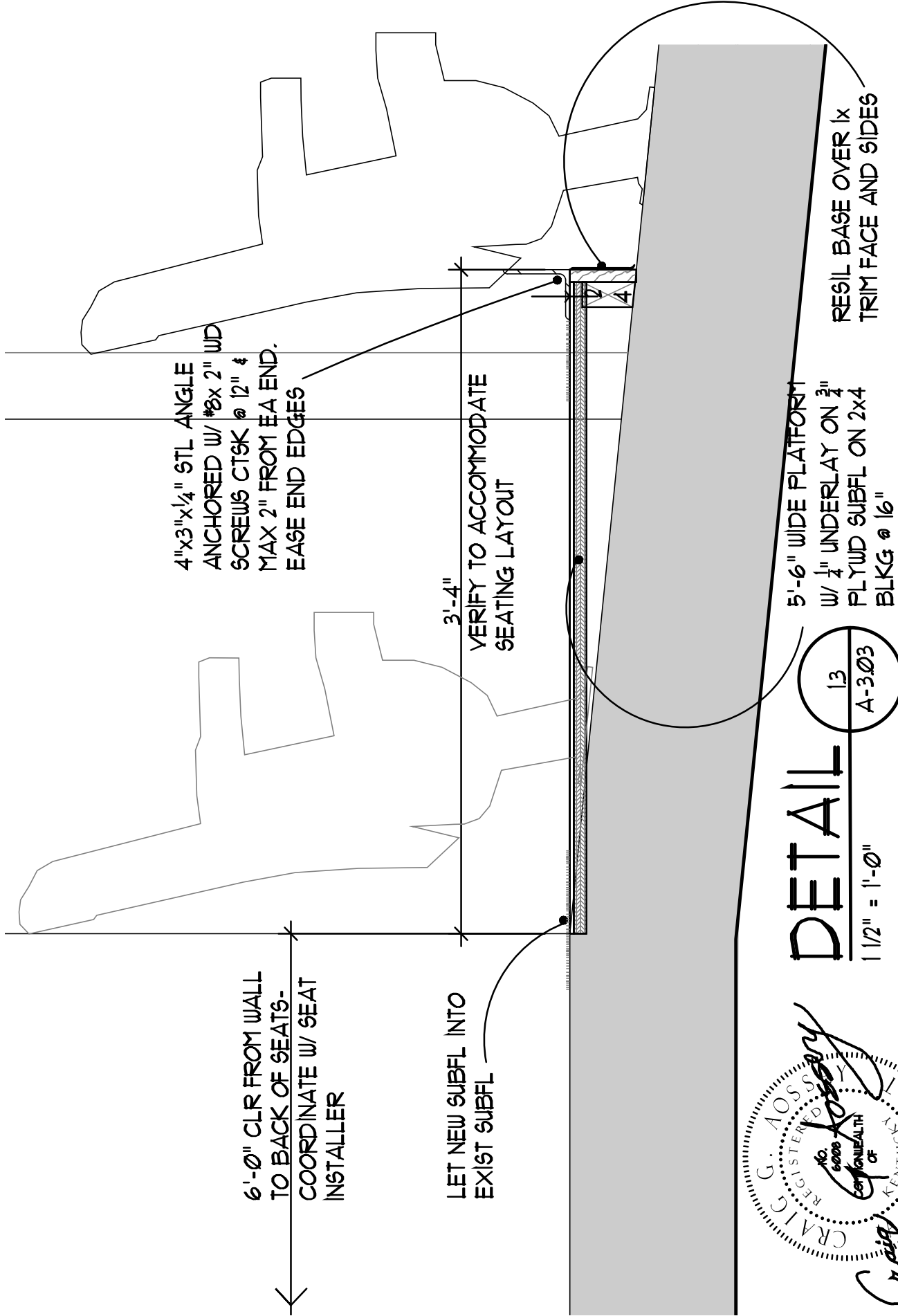
DATE
 FEB 24
 JOB NO.
 2212

SUPPLEMENTAL DWG 12
 FRANKFORT HIGH SCHOOL
 NEW DET 14/A-3.03
 REVISED DET 11/A-3.03

FHS AND SECOND STREET SCHOOL
 PHASE 4 - RENOVATIONS
 FHS: AUDITORIUM RENOVATION
 FRANKFORT IND. BOARD OF EDUCATION
 FRANKFORT, KENTUCKY

314 WILKINSON ST.
 FRANKFORT, KY 40601
 PHONE 502-875-2290
 FAX 502-875-1307
 mail@gsc-arch.com





RESIL BASE OVER 1x TRIM FACE AND SIDES

DETAIL

1 1/2" = 1'-0"

13
A-3.033

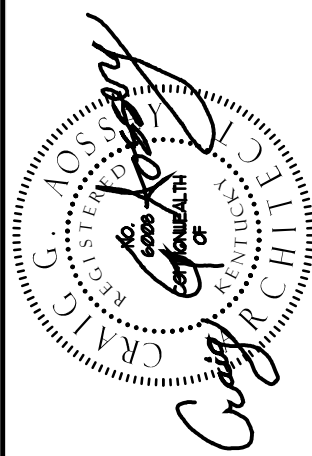
5'-6" WIDE PLATFORM
W/ 1/4" UNDERLAY ON 3/4"
PLYWD SUBFL ON 2x4
BLKG @ 16"

3'-4"
VERIFY TO ACCOMMODATE
SEATING LAYOUT

4" x 3" x 1/4" STL ANGLE
ANCHORED W/ #8 x 2" WD
SCREWS CT9K @ 12" &
MAX 2" FROM EA END.
EASE END EDGES

6'-0" CLR FROM WALL
TO BACK OF SEATS -
COORDINATE W/ SEAT
INSTALLER

LET NEW SUBFL INTO
EXIST SUBFL



DRAWING
A-3.03b

DATE
FEB 24
JOB NO.
2212

SUPPLEMENTAL DWG 13
FRANKFORT HIGH SCHOOL
DET 13/A-3.03

FHS AND SECOND STREET SCHOOL
PHASE 4 - RENOVATIONS
FHS: AUDITORIUM RENOVATION
FRANKFORT IND. BOARD OF EDUCATION
FRANKFORT, KENTUCKY

314 WILKINSON ST.
FRANKFORT, KY 40601
PHONE 502-875-2290
FAX 502-875-1307
mail@gsc-atrch.com
GSA
G. SCOTT & ASSOCIATES, ARCHITECTS P.C.